

TELREX ANTENNA

ASSEMBLY INSTRUCTIONS

MODEL

20MG46

SERIAL NO.

37862

PUR. DATE

6/6/77

IMPORTANT!

WHEN REFERRING TO THIS CUSTOM-BUILT TELREX EQUIPMENT, PLEASE SUPPLY MODEL NUMBER, SERIAL NUMBER, DATE OF PURCHASE AND FROM WHOM, SO THAT WE CAN MORE EFFECTIVELY HANDLE YOUR INQUIRY.

NOTE:

TO HELP PRESERVE ELECTRICAL CONTINUITY, ONLY TELREX ANTI-SEIZE (ANTI-CORROSIVE) COMPOUND (NO OTHER) SHOULD BE APPLIED TO ALL ALUMINUM TUBING MATING SECTIONS. THIS IS CONTAINED IN THE ENCLOSED. ROUND PILL BOX. WARNING! DO NOT USE IT ON INSULATORS OR ACROSS ELECTRICAL CONNECTIONS.

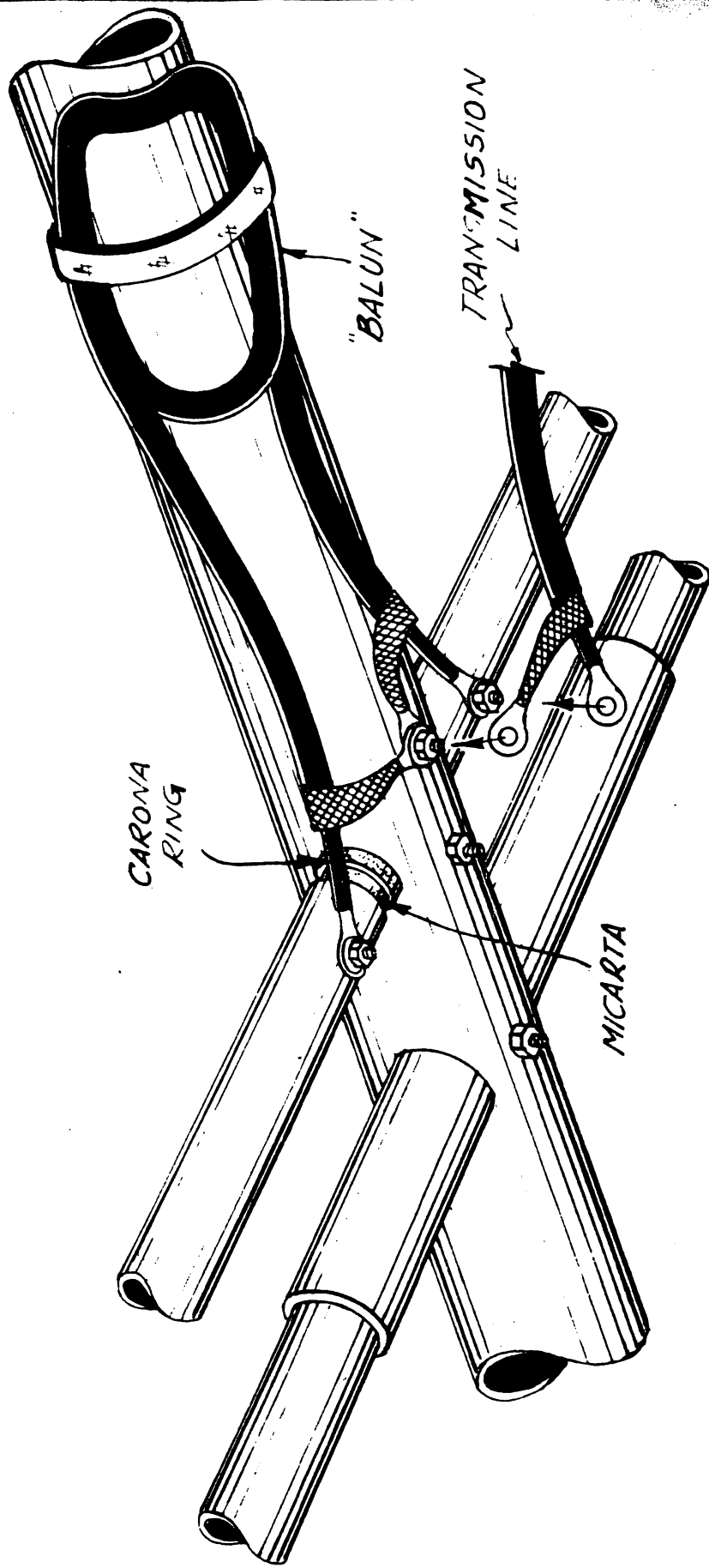
ANTENNAS

SINCE
1921

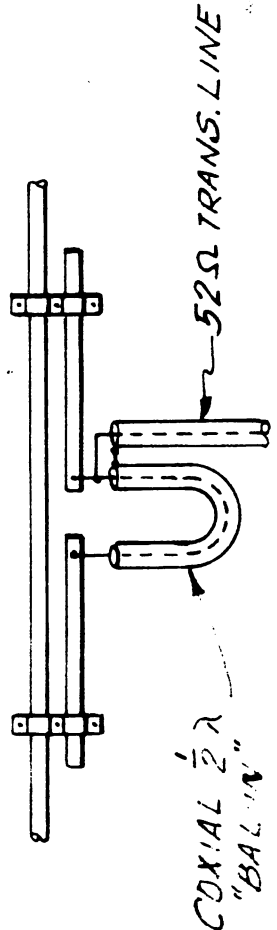
Communication and TV Antennas
telrex LABORATORIES

ASBURY PARK

NEW JERSEY, U.S.A.



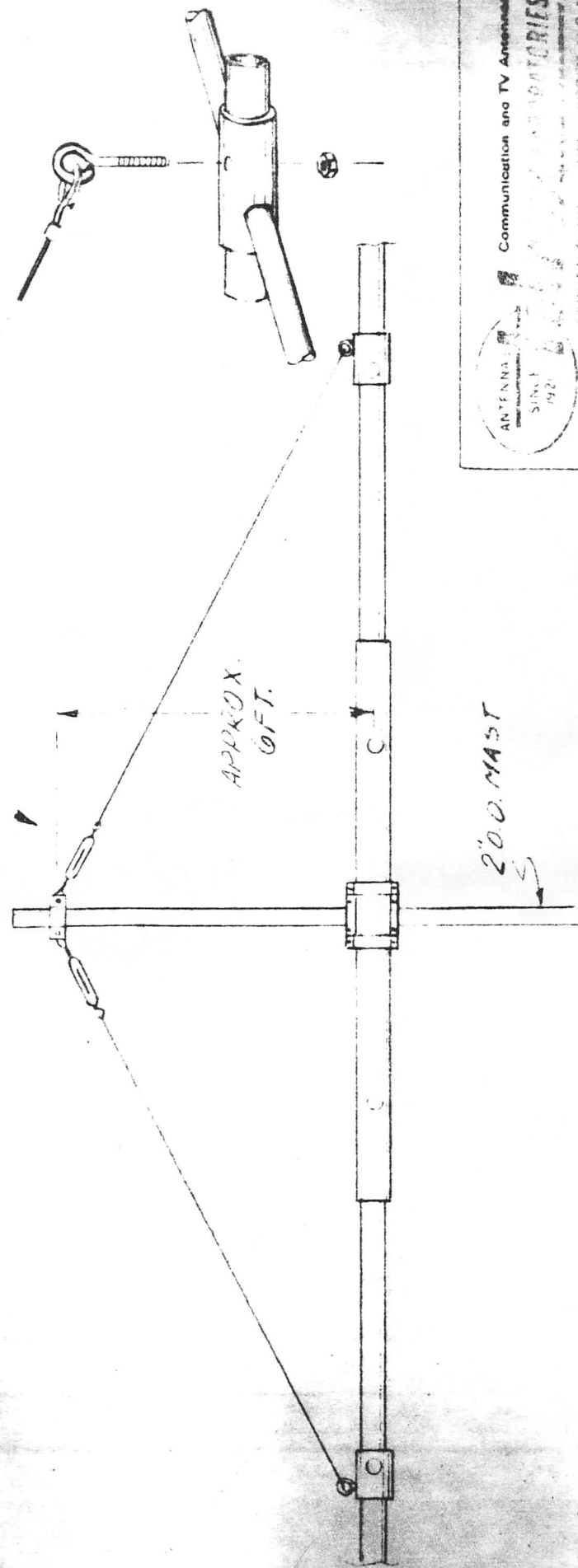
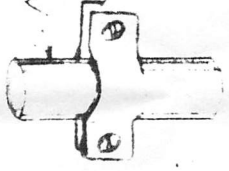
SCHMATIC



"BALUN" AND TRANSMISSION LINE CONNECTIONS

DRWG NO - C760416 RA

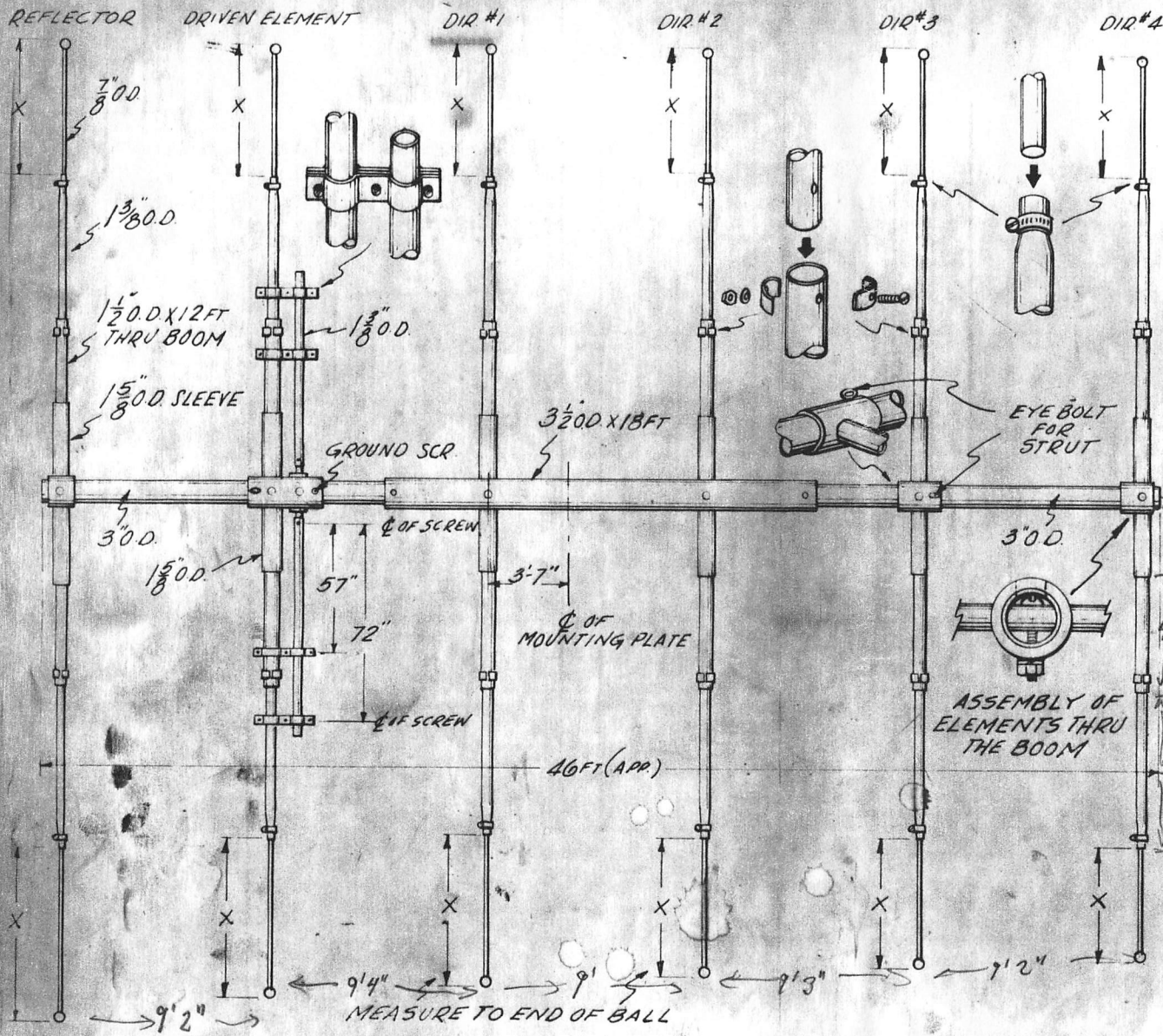
MAST



Communication and TV Antennas
ANTENNA SYSTEMS
SINCE 1921
ANTENNA SYSTEMS
NEW JERSEY U.S.A.

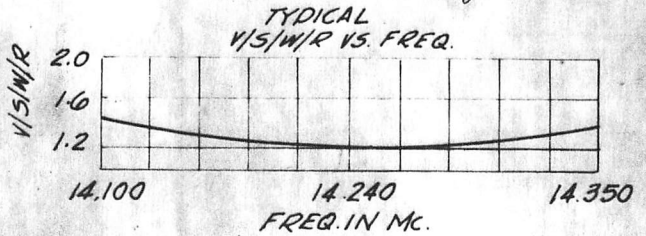
STRUT ASSEMBLY
MODEL -

DRWG NO-C721204RB



FREQ	"X" DIMENSION IN INCHES					
14.120	75"	69 1/4"	58 5/8"	50 3/4"	48 3/4"	
14.170	74"	68 1/4"	57 5/8"	49 3/4"	47 3/4"	
14.240	73"	67 1/4"	56 5/8"	48 3/4"	46 3/4"	
14,300	72"	66 1/4"	55 5/8"	47 3/4"	45 3/4"	
REF	D.E	D1	D2	D3	D4	

Measure most accurately



BEAMWIDTH 48 GAIN 14.0 DB
 F/B RATIO 28 DB.
 WIND SURFACE AREA 16.8 SQ.FT.
 WIND LOAD AT 100 M.P.H. 533 LBS.
 WEIGHT 157 LBS. WITH MOUNTING PLATE
 TURNING RADIUS APPROX. 29 FT.

ANTENNAS SINCE 1921 **telrex** LABORATORIES
 COMMUNICATION AND TV ANTENNAS
 ASBURY PARK NEW JERSEY, U.S.A.

20 METER 6 ELEMENT
 OPTIMUM SPACED
 MODEL 20M646
 DRWG. NO. - C730627RA

NOT TO SCALE