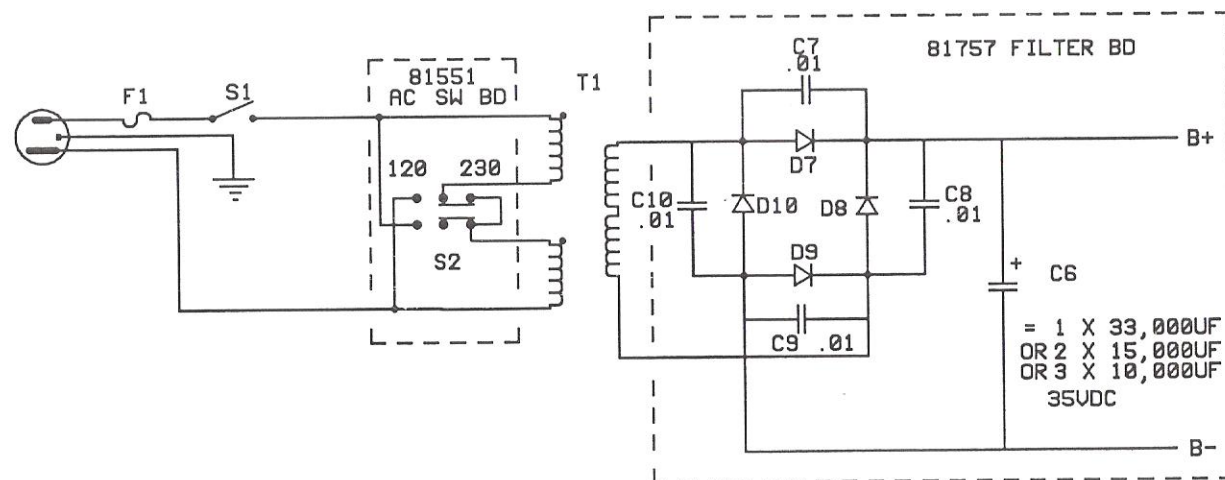


LAST USED

IC1 LM358
 R33 2N5060
 Q1 2N4124
 Q2 2N5087
 D11 MJE521
 C12 2N5301
 IC1

MODEL 962



Model 962 test report

24 Sept 98

Voltage overshoot on turn-on causes 564 over voltage protection to "buzz"

Caused by c12 - r560 charge timepulls gnd and base of Q5 to B- till charged

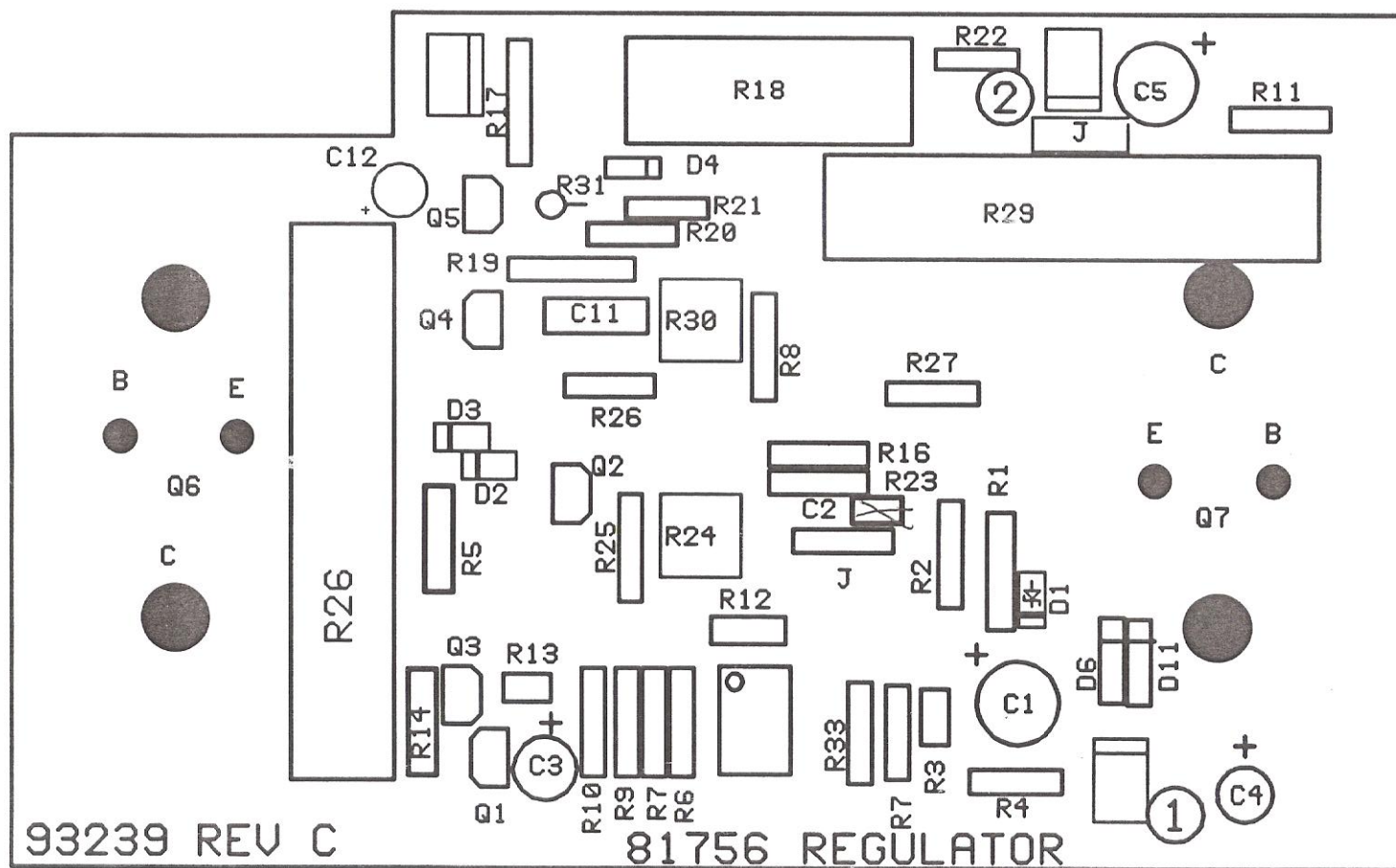
Change C12 from 33uF to 10 uF.....(R21-31 and C12 feedback gnd ripple to Q5 to reduce ripple on output).....this ripple was found on first run only with red zeners (change zeners also reduced ripple).

Add 1000 uF to AUX 12 Vdc jacks on rear chassisThis caused over current trip on some units....

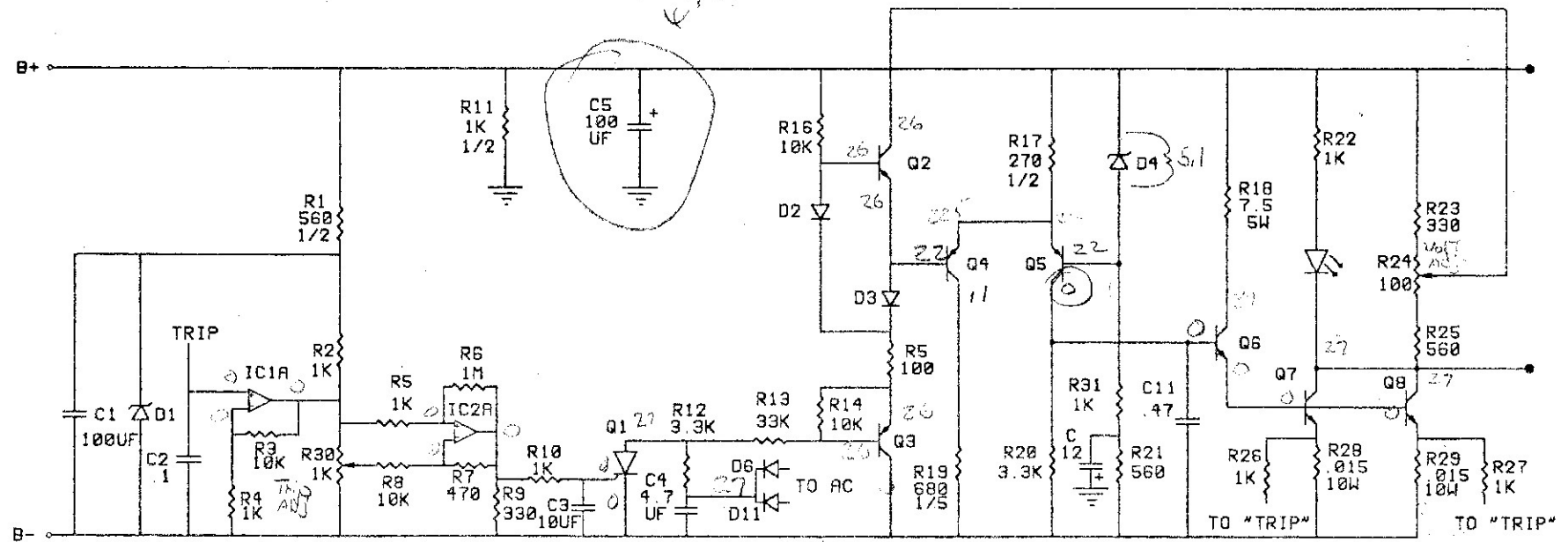
Change R10 from 1K to 4.7K To delay trip

MOVE C2 to IC #4+5
added GK resistor 1KΩ

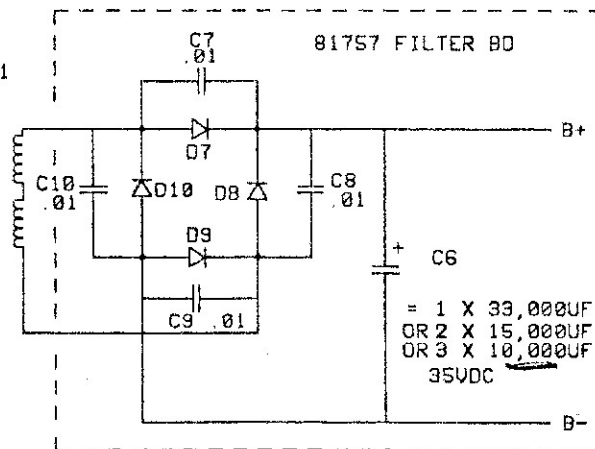
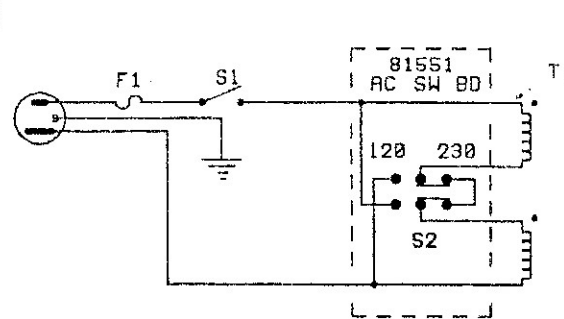
Hardy



SCHEMATIC DIAGRAM OF MODEL 962 POWER SUPPLY/SPEAKER



LAST USED	IC1	LM358
R31	Q1	2N5060
Q8	Q2	2N4124
D11	Q3-Q5	2N5087
C12	Q6	MJE521
IC1	Q7-Q8	2N5301



= 1 X 33,000UF
OR 2 X 15,000UF
OR 3 X 10,000UF
35VDC

PIN 23348