

Thank you for purchasing the OPC-478U CLONING CABLE. This cloning cable is designed to connect an Icom transceiver/receiver and a PC for data cloning using Icom cloning software.

Please read these instructions thoroughly before using the OPC-478U.

■ IMPORTANT

READ ALL INSTRUCTIONS carefully and completely before using the OPC-478U.

SAVE THESE INSTRUCTIONS!— These instructions contain important safety and operating details for the OPC-478U.

■ PRECAUTION

⚠ **USE INDOORS ONLY! NEVER** expose the cloning cable to rain, snow or any liquids.

NEVER let metal, wire, etc. touch any internal part of the unit.

Please ensure that the USB port(s) operation is supported by your PC. This can be checked by confirming the Universal Serial Bus controller in the Device Manager. The USB port(s) operation of PC's installed with Microsoft® Windows® 98/Me/2000/XP are likely supported, thus operation with the OPC-478U should be possible.

/// **About the USB port**

/// The OPC-478U can also be connected to a USB 2.0 port, however, the OPC-478U will be transferring data as USB 1.1 format.

Use the supplied USB cable, OPC-1045, only. **DO NOT** extend the USB cable. When the cable is extended/use longer than 1 m (3 ft), a cloning error may occur.

Connecting the OPC-478U to PC's USB port directly or USB hub with bus-power is recommended. Approximately 20 mA of current capacity is required for the OPC-478U. When the USB port has insufficient current capacity, the cloning operation may unstable, or a cloning error may occur.

AVOID the use of chemical agents such as benzine or alcohol when cleaning, as they can damage the OPC-478U.

■ Supplied accessories

	Qty.
• OPC-478U	1
• USB cable (OPC-1045)	1
• USB driver software (FD)	1

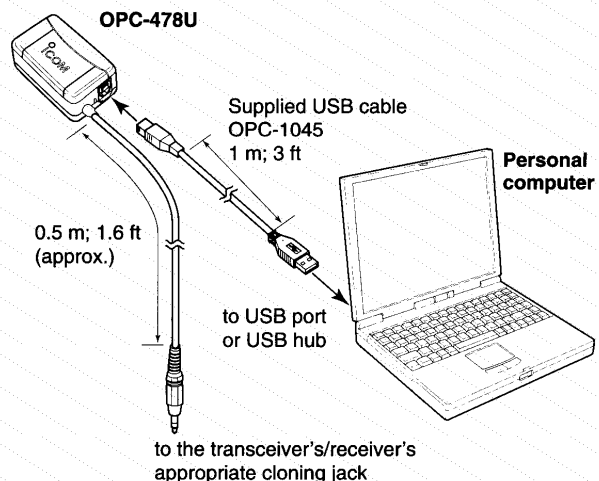
■ Cloning software compatibility

The USB type cloning cable, OPC-478U, is almost the same as the current OPC-478 (RS-232C type), therefore, most of the current Icom cloning software which require the OPC-478 can be used with the OPC-478U.

/// **IMPORTANT**

/// The current Icom cloning software has only 4 COM port selections. When several peripheral equipment, such as printer, scanner, hard-disk drive, are connected via the USB port of the PC, the cloning software may not detect the cable connection.

■ Connection



When connecting the OPC-478U for the first time while Windows is running, the "New Hardware is found" dialog box appears. In this case, the USB driver installation is necessary.

See "■ Driver installation" for installation details.

Icom, Icom Inc. and the Icom logo are registered trademarks of Icom Incorporated (Japan) in the United States, the United Kingdom, Germany, France, Spain, Russia and/or other countries. Microsoft and Windows are registered trademarks of Microsoft Corporation in the United States and/or other countries.

■ Driver installation

◇ Microsoft® Windows® 98/Me environment

- ① Connect the OPC-478U to the desired USB port.
 - "New Hardware is found" dialog box appears.
- ② The "Add New Hardware Wizard" will come up as below. Click [Next>].



- ③ Select "Search for the best driver for your device (Recommended)." Then click [Next>].



- ④ Select "Floppy disk drives," and insert the supplied floppy disk into the drive. Then click [Next>].



- ⑤ Click [Next>].
 - The driver installation starts after clicking.



- ⑥ After the installation is completed, click [Finish].



- ⑦ Eject the floppy disk.
 - Rebooting the PC is recommended.

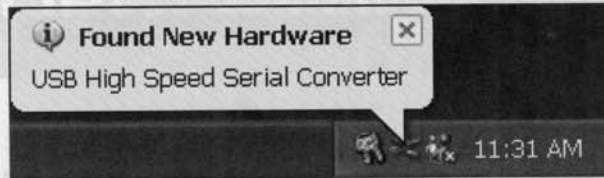


/// The displayed dialog boxes or indications may differ slightly from the above instructions according to your system conditions, or environment.

■ Driver installation— continued

◇ Microsoft® Windows® XP environment

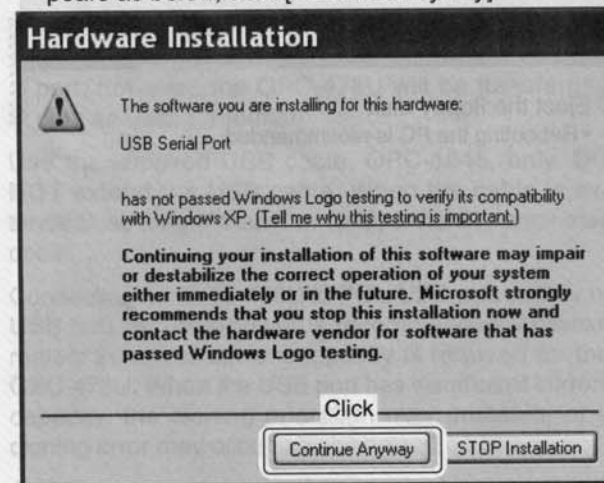
- ① Connect the OPC-478U to the desired USB port.
 - “Found New Hardware” appears as below.



- ② The “Found New Hardware Wizard” will come up as below. Insert the supplied floppy disk into the drive, select “Install the software automatically (Recommended)”, then click [Next>].



- ③ In case the “Hardware Installation” dialog box appears as below, click [Continue Anyway].



■ Supplied accessories

	Qty.
• OPC-478U	1
• USB cable (OPC-1045)	1
• USB driver software (CD)	1

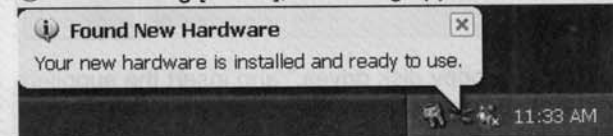
- ④ Windows starts searching and installing the USB driver automatically.



- ⑤ After the installation is completed, click [Finish].



- ⑥ After clicking [Finish], the dialog appears as below.



- ⑦ Eject the floppy disk.
 - Rebooting the PC is recommended.



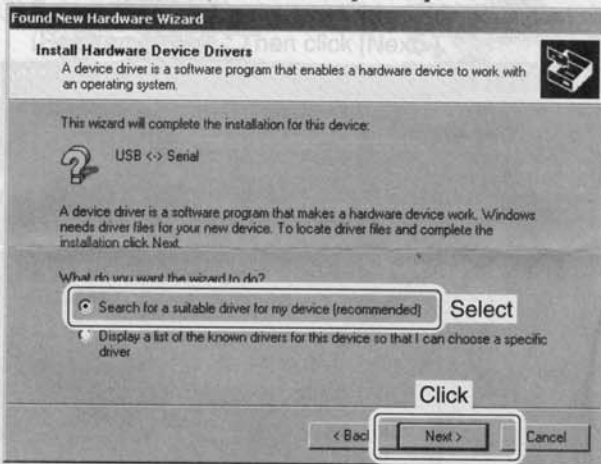
Icom, Icom Inc, and the Icom logo are registered trademarks of Icom Incorporated (Japan) in the United States, the United Kingdom, Germany, France, Spain, Russia and/or other countries. Microsoft and Windows are registered trademarks of Microsoft Corporation in the United States and/or other countries.

◇ Microsoft® Windows® 2000 environment

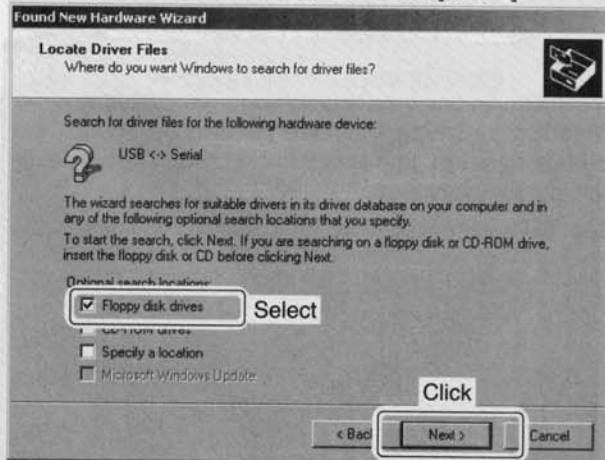
- 1 Connect the OPC-478U to the desired USB port.
 - “Found New Hardware” dialog box appears.
- 2 The “Found New Hardware Wizard” will come up as below. Click [Next>].



- 3 Select “Search for a suitable driver for my device (recommended)”, then click [Next>].



- 4 Select “Floppy disk drives”, and insert the supplied floppy disk into the drive, then click [Next>].



- 5 After the installation is completed, click [Finish].



- 6 Eject the floppy disk.
 - Rebooting the PC is recommended.