

Installing Icom Drivers for HF Radios

For IC-7100 / IC-7200 / IC-7410 / IC-7600 / IC-9100

To use USB-based applications with your radio (such as Icom's RS-BA1 software or Ham Radio Deluxe), you will need to install Icom USB drivers to allow the radio to communicate with the computer. The standard Windows drivers that are included in Windows-Based operating systems will generally not work.

Installing the Icom Drivers

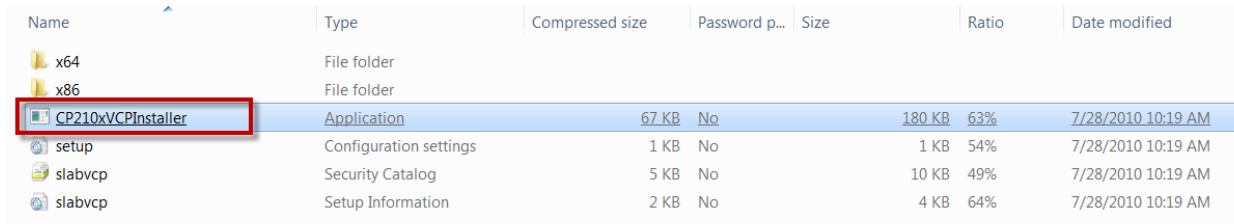
1. Go to the Icom global web site.
2. Click the Support tab and go to Firmware Updates/Software Downloads.



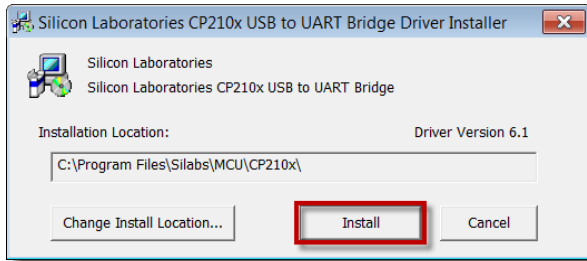
3. Scroll down the list and download the latest USB driver for your radio model.

Note: Verify that your operating system is applicable for these drivers.

4. Once downloaded, double click on the firmware folder.
5. Double-Click the CP210xVCPInstaller executable application.

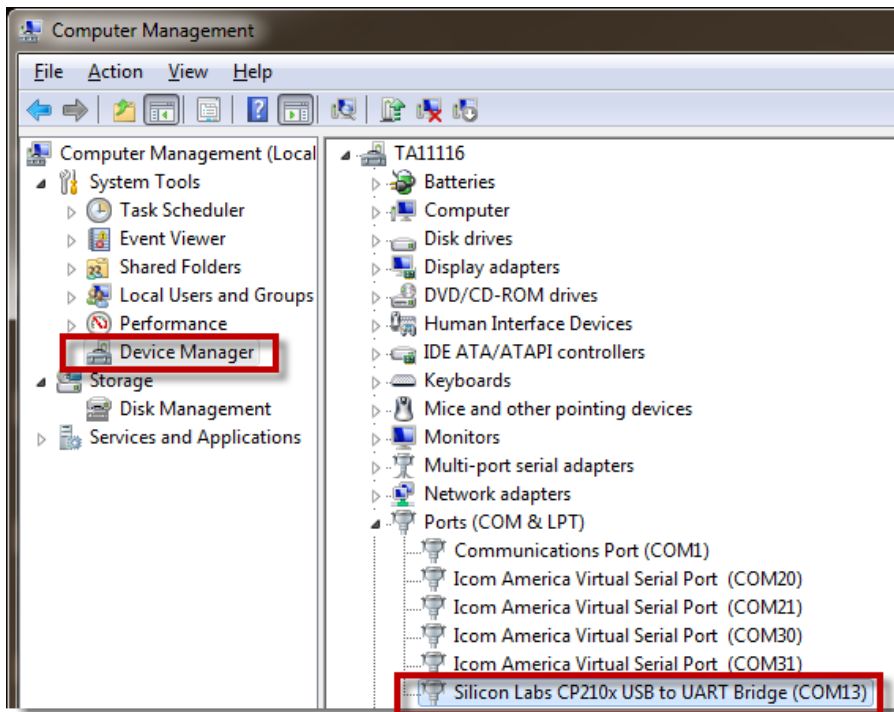


6. Click **Install**.



7. Once installed, connect the radio to the computer with your USB cable.

8. Go to Device Manager/Ports (Com and LPT), and verify that it says **Silicone Labs CP210X USB to UART Bridge**.



Possible Errors

If some other driver name appears, or if no driver name appears:

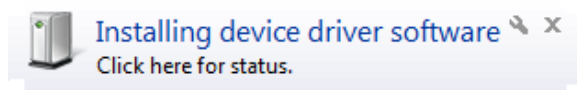
- Incompatible Operating system (Ex: Win 98 or 2000)
- Radio isn't connected
- Bad USB cable

- USB Chip in radio has been damaged due to voltage surges and improper grounding of computer and radio.
- Other devices connected to computer via USB have caused conflicts.

If You Connect Your Radio to Your Computer before Installing Icom Drivers

If your computer does not have Icom Drivers installed, it will attempt to install the default Windows drivers when you connect your radio. These default drivers are not compatible with the Icom radio USB chip.

You will see the following messages when it tries to install the default drivers.



If you check the Device Manager in a non working setup you will see a yellow warning icon, as shown in the diagram below.

A properly installed driver will state “**Silicon Labs**” in the driver title in the Device Manager as shown in the Icom Driver instructions.

