



VHF/UHF DUAL BAND DIGITAL TRANSCEIVER

# ID-4100A

*Enjoy D-STAR Communication  
More Actively and More Comfortably*



Terminal Mode and Access Point Mode

Flexible Installation

Intuitive User Interface

Full dot-matrix LCD Bluetooth® GPS iOS™/Android™ App



**D-STAR**



# Compact, User-Friendly VHF/UHF Dual Bander Offers a Variety of Operating Styles

## DV GATEWAY FUNCTIONS

### Terminal Mode and Access Point Mode Expand Communication Coverage and Fun

Terminal and Access Point modes\* enable you to enjoy long-distance D-STAR (Digital Smart Technology for Amateur Radio) communication through the Internet. You can access the D-STAR repeater network through the Internet, regardless of locations and conditions of nearby repeaters.

\* An optional free download software, RS-MS3W is required to be installed in the PC. An optional free download application, RS-MS3A is required to be installed, in the Android™ device.

#### Terminal Mode

By connecting the ID-4100A to the Internet through a Windows® PC or Android™ device, the Terminal mode enables you to use a D-STAR repeater to make D-STAR gateway calls.



#### Access Point Mode

The Access Point mode enables another D-STAR transceiver to make D-STAR gateway calls through the ID-4100A connected to the Internet. 50 watts of output power can be used for a D-STAR access point.



## Flexible Installation

### Compact, Detachable Controller for Flexible Installation

The controller can be attached or detached from the main unit for flexible installation. By using the supplied OPC-837 controller cable, you can install the controller up to 3.5 meters (11.5 ft) away from the main unit.



\* Vehicle installation example (Using the optional MBF-1 mount base and MBA-8 controller bracket)

## User Friendly

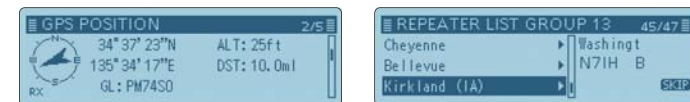
### DR Function with the Latest Icom User Interface

#### DR (D-STAR Repeater) Function

The DR function makes D-STAR communications simple. By simply selecting a destination call sign in "To", and your access repeater in "From", you can talk with other D-STAR users. In addition, using the reflector function, you can talk through several repeaters at once.

#### Easy-to-Read Full Dot-Matrix Display

To increase the amount of display information, a full dot-matrix display is used in the ID-4100A. For example, Repeater list or GPS position information are clearly arranged and easy to read.



GPS position information example

Repeater list example

#### DV/FM Near Repeater Search Function

The DV/FM near repeater search function assists you in accessing nearby repeaters, even in areas you are visiting for the first time. The function searches for nearby repeaters using the repeater memories with the GPS position information.

\* To use the near repeater search function, the position data of the repeater is required. The ID-4100A will be shipped with the D-STAR repeater memories preprogrammed, but the position data of some D-STAR repeaters may not be entered or exact.

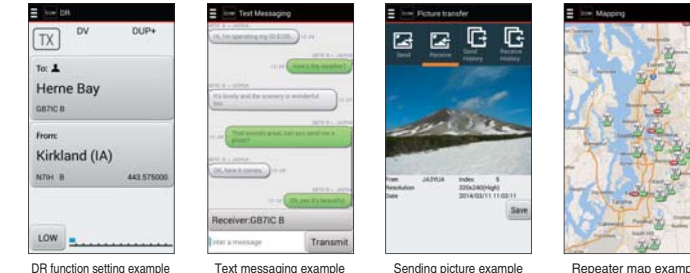
## Smart Operation

### Advanced Operation with a Smart device and Bluetooth®

#### Applications for iOS™ and Android™ devices\*

The RS-MS1I (for iOS™ devices) and RS-MS1A (for Android™ devices) enable you to wirelessly connect to the ID-4100A and remotely set the DR functions, link with a map application and send/receive messages over the DV mode. In addition, pictures taken by a smart device can be transmitted via the DV Fast Data mode or DV mode.

\* The optional UT-137 Bluetooth® unit must be installed in the ID-4100A. Some functions may not work properly, depending on smart devices used.



DR function setting example

Text messaging example

Sending picture example

Repeater map example

#### DV Fast Data Mode\*

By using the data place in voice frames, the ID-4100A transfers data 3.5 times faster (3480 bps) than in the conventional DV mode (with voice).

Conventional low-speed data mode

950 bps

DV Fast data mode

3480 bps

\* The DV Fast Data mode is not compatible with the DV mode low-speed data communication.

VHF/UHF DUAL BAND DIGITAL TRANSCEIVER

## ID-4100A



Actual size

## And More

#### microSD Card Slot for Voice and Data Storage\*

When used with a microSD card, you can store various information including voice memory, TX voice message, QSO log, RX history log and GPS log data. Memory channels and other settings can be saved and loaded into the transceiver.

\* A microSD card is required separately.



microSD card slot

#### Integrated GPS Receiver

The integrated GPS receiver shows your own position, course, speed and altitude on the display and can be used for exchanging position reports, D-PRS and searching for nearby repeaters.

#### Wideband Receiver

The ID-4100A receives 118–174 and 230–550 MHz\*. You can listen to air band, marine, weather channels\*2 and other VHF and UHF utility communications.

\*1 Working range not guaranteed. \*2 USA version only.



\* Installation example (Using the optional OPC-2350LU data cable and RS-MS3W software for Windows® PC)

#### Wireless Operation with VS-3 Bluetooth® Headset\*

The optional VS-3 Bluetooth® headset provides convenient wireless communication away from the transceiver. The VS-3 remotely controls the ID-4100A with three programmable buttons.

\* The optional UT-137 Bluetooth® unit must be installed in the ID-4100A.



#### Selectable LCD and Key Backlight Color

The backlight color of the LCD and keys is selectable from white, green, amber or blue. Using the backlight night time setting function, the display backlight brightness can automatically be changed when the designated time comes.



#### Other Features

- The QUICK key allows instant access to menus listing dedicated functions depending on mode
- Multiple scan functions for Memory/Bank scan, Full scan, Band scan, Program scan, Program link scan, Duplex scan Tone scan and DR scan
- 16 channels of DTMF memory (24-digit)
- CTCSS/DTCS signaling with the split tone functions (analog mode)
- 8.33 kHz air band channel reception
- Auto repeater function (USA version only)
- HM-207S remote-control hand microphone (supplied as standard)



## SPECIFICATIONS

GENERAL			
Frequency coverage			
	Version	Transmit	Receive
	USA	144-148, 430-450 MHz	118-174, 230-550 MHz*1
	Export	137-174, 400-470 MHz*2	118-174, 230-550 MHz*2
Guaranteed range *1 144-148, 430-450 MHz; *2 144-148, 430-440 MHz.			
Type of emission	F2D, F3E, F7W		
Mode	DV, FM, FM-N, AM (RX only), AM-N (RX only)		
Operating temperature range	-10°C to +60°C; 14°F to +140°F		
Frequency stability	±2.5 ppm (-10°C to +60°C on the basis of 25°C)		
Antenna impedance	50 Ω (SO-239)		
Number of memory channels	1000 regular channels, 4 call channels, 50 program scan edges, 1500 repeater memories and 300 GPS memory		
Power supply requirement	13.8 V DC ±15%		
Current drain	13.0 A		
(approximate)	Tx	1.2 A/0.9 A (Max. audio/Stand-by)	
	Rx	150 × 40 × 171.9 mm; 5.9 × 1.6 × 6.8 in	
Dimensions	Main unit + Controller	122 × 40 × 29.9 mm; 4.8 × 1.6 × 1.2 in	
	Controller	(W×H×D, Projections are not included.)	
Weight	Main unit	1.1 kg; 2.4 lb	
(approximate)	Controller	100 g; 3.5 oz	

TRANSMITTER	
Output power (at 13.8 V DC)	50 W, 15 W, 5 W (Hi, Mid, Low)
Max. frequency deviation	±5.0 kHz±2.5 kHz (W/N)
Spurious emissions	Less than -60 dBc
Microphone impedance	600 Ω (8-pin modular)

RECEIVER	
Intermediate frequencies	46.35 MHz/450 kHz (1st/2nd)
Sensitivity	FM, FM-N DV Less than 0.18 μV (amateur bands at 12 dB SINAD) Less than 0.22 μV (at 1% BER)
Squelch sensitivity	Less than 0.13 μV (threshold)
Selectivity	FM/FM-N DV More than 60 dB/55 dB More than 50 dB
Spurious and image rejections	More than 60 dB
Audio output power	More than 2.0 W (10% distortion, 8 Ω load)
External speaker connector	2 conductor 3.5 (d) mm (1/8")/8 Ω
Receiver sensitivity	(Except amateur bands.)

FM/FM-N (12 dB SINAD)			
137-159.995 MHz	Less than 0.32 μV	160-174.000 MHz	Less than 0.32 μV
230-259.995 MHz	Less than 1.8 μV	260-321.995 MHz	Less than 0.56 μV
322-374.995 MHz	Less than 0.56 μV	375-399.995 MHz	Less than 0.56 μV
400-499.995 MHz	Less than 0.32 μV	500-550.000 MHz	Less than 0.56 μV
AM/AM-N (10dB S/N)			
118-136.991 MHz	Less than 1.0 μV	230-259.995 MHz*	Less than 5.6 μV
260-321.995 MHz*	Less than 1.8 μV	322-374.995 MHz*	Less than 1.8 μV

\* Only AM mode.

All stated specifications are subject to change without notice or obligation.

### Supplied Accessories

- Hand microphone, HM-207S
- DC power cable, OPC-345B
- Controller cable, OPC-837 (3.5 m; 11.4 ft)
- Microphone hanger
- Spare fuse

### Note for the Terminal mode and Access point mode:

• You need an Internet connection with an IPv4 Global IP address. If you use a cellular system, you need an IPv4 Global IP address assigned to your Windows® or Android™ device. • Before you set up the Access point, check any regulations or laws in your country. • When operating in the Access Point mode, you need two call signs. One for the Access Point transceiver and one for the Remote D-STAR transceiver. • For the Access point or Terminal mode operation, you must register your MY and Access point call signs with a Gateway repeater/ server that has the RS-RP3C installed.

D-STAR (Digital Smart Technology for Amateur Radio) is a digital radio protocol developed by JARL (Japan Amateur Radio League). Icom, Icom Inc. and the Icom logo are registered trademarks of Icom Incorporated (Japan) in Japan, the United States, the United Kingdom, Germany, France, Spain, Russia, Australia, New Zealand and/or other countries. Android and Google Play are registered trademarks or trademarks of Google Inc. Windows is either a registered trademark or a trademark of Microsoft Corporation in the United States and/or other countries. The Bluetooth® word mark and logos are registered trademarks owned by Bluetooth SIG, Inc. and any use of such marks by Icom Inc. is under license. IOS is a trademark or registered trademark of Cisco in the U.S. and other countries and is used under license. App Store is a service mark of Apple Inc. All other trademarks are the properties of their respective holders. **NEVER operate the transceiver while driving a vehicle. Safe driving requires your full attention—anything less may result in an accident.**

## OPTIONS

Some options may not be available in some countries. Please ask your dealer for details.

### HAND MICROPHONES



### Bluetooth® UNIT & Bluetooth® HEADSET



### EXTERNAL SPEAKERS



### CONTROLLER EXTENSION CABLE



### MICROPHONE EXTENSION CABLES



### MOUNTING BASE & CONTROLLER BRACKET



### MOUNTING BRACKET



### DATA COMMUNICATION CABLE



### SOFTWARE/APPLICATION

- **RS-MS1A:** Remote control application for Android™.
  - **RS-MS1I:** Remote control application for iOS™.
  - **RS-MS3A:** Terminal/AP mode application for Android™.
  - **RS-MS3W:** Terminal/AP mode software for Windows® PC.
  - **CS-4100:** Programming software for Windows® PC.
- \* Applications for Android™ can be freely download from Google Play.  
\* Application for iOS™ can be freely download from App Store™.  
\* Software for Windows® PC can be freely download from the Icom website.

### OTHER OPTIONS

- **OPC-478UC:** USB programming cable for PC.
- **OPC-1529R:** RS-232 data communication cable for PC.
- **OPC-589:** Microphone adapter cable for use with a 8-pin microphone.

### Software/Application Comparison Chart

Software/App	OS	Function	Required option
RS-MS1A	Android™ 4.0 or later	Remote control operation	UT-137
RS-MS1I	iOS™ 8.0.1 or later	Remote control operation	UT-137
RS-MS3A	Android™ 4.0 or later	Terminal/Access Point mode	OPC-2350LU
RS-MS3W	Windows® 7 or later	Terminal/Access Point mode	OPC-2350LU
CS-4100	Windows® 7 or later	Programming	microSD card/OPC-2350LU/OPC-1529R/OPC-478UC

### Main unit (Front panel)



### (Rear panel)



## Icom Inc.

1-1-32, Kamiminami, Hirano-Ku, Osaka 547-0003, Japan Phone: +81 (06) 6793 5302 Fax: +81 (06) 6793 0013

[www.icom.co.jp/world](http://www.icom.co.jp/world)

## Count on us!

Your local distributor/dealer:

### Icom America Inc.

12421 Willows Road NE,  
Kirkland, WA 98034, U.S.A.  
Phone: +1 (425) 454-8155  
Fax: +1 (425) 454-1509  
E-mail: [sales@icomamerica.com](mailto:sales@icomamerica.com)  
URL: <http://www.icomamerica.com>

### Icom (Europe) GmbH

Communication Equipment  
Auf der Krautweide 24  
65812 Bad Soden am Taunus, Germany  
Phone: +49 (6196) 76685-0  
Fax: +49 (6196) 76685-50  
E-mail: [info@icom-europe.com](mailto:info@icom-europe.com)  
URL: <http://www.icomeurope.com>

### Icom France s.a.s.

Zac de la Plaine,  
1 Rue Brindejonc des Moulinais, BP 45804,  
31505 Toulouse Cedex 5, France  
Phone: +33 (5) 61 36 03 03  
Fax: +33 (5) 61 36 03 00  
E-mail: [icom@icom-france.com](mailto:icom@icom-france.com)  
URL: <http://www.icom-france.com>

### Icom Canada

Glenwood Centre #150-6165  
Highway 17A, Delta, B.C.,  
V4K 5B8, Canada  
Phone: +1 (604) 952-4266  
Fax: +1 (604) 952-0090  
E-mail: [info@icomcanada.com](mailto:info@icomcanada.com)  
URL: <http://www.icomcanada.com>

### Icom Spain S.L.

Ctra. Rubi, No. 88 "Edificio Can Castanyer"  
Bajos A 08174, Sant Cugat del Valles,  
Barcelona, Spain  
Phone: +34 (93) 590 26 70  
Fax: +34 (93) 589 04 46  
E-mail: [icom@icomspain.com](mailto:icom@icomspain.com)  
URL: <http://www.icomspain.com>

### Icom (Australia) Pty. Ltd.

Unit 1 / 103 Garden Road,  
Clayton, VIC 3168 Australia  
Phone: +61 (03) 9549 7500  
Fax: +61 (03) 9549 7505  
E-mail: [sales@icom.net.au](mailto:sales@icom.net.au)  
URL: <http://www.icom.net.au>

### Icom Brazil

Rua Itororó, 444 Padre Eustáquio  
Belo Horizonte MG,  
CEP: 30720-450, Brazil  
Phone: +55 (31) 3582 8847  
Fax: +55 (31) 3582 8987  
E-mail: [sales@icombrasil.com](mailto:sales@icombrasil.com)

### Icom (UK) Ltd.

Blacksole House, Altira Park,  
Herne Bay, Kent, CT6 6GZ, U.K.  
Phone: +44 (0) 1227 741741  
Fax: +44 (0) 1227 741742  
E-mail: [info@icomuk.co.uk](mailto:info@icomuk.co.uk)  
URL: <http://www.icomuk.co.uk>

### Shanghai Icom Ltd.

No.101, Building 9, Caifuxingyuan Park,  
No.188 Maoting Road, Chedun Town,  
Songjiang District, Shanghai, 201611, China  
Phone: +86 (021) 6153 2768  
Fax: +86 (021) 5765 9987  
E-mail: [bjicom@bjicom.com](mailto:bjicom@bjicom.com)  
URL: <http://www.bjicom.com>