




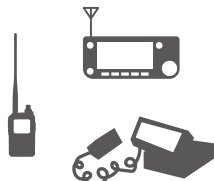
You can download the latest repeater list from the Icom website.

This guide describes how to update the repeater list using an SD card or microSD card (Hereafter, referred to as “SD card”) for the transceivers with an SD card slot.

D-STAR (Digital Smart Technology for Amateur Radio) is a digital radio protocol developed by JARL (Japan Amateur Radio League).

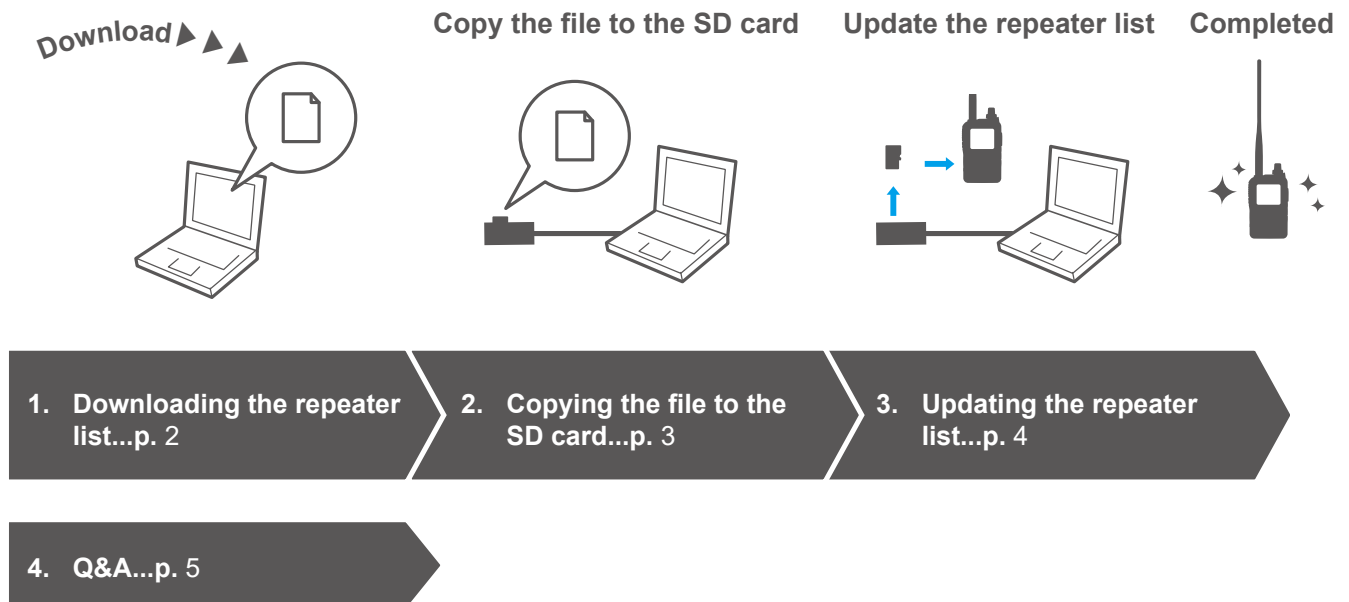
Requirements

The following equipment is required for updating the repeater list:

| | | | |
|-----------------------------------------------------------------------------------|-----------------------------------------------------------------------------------|-----------------------------------------------------------------------------------|-------------------------------------------------------------------------------------|
|  |  |  |  |
| PC (Internet) | Memory card reader or SD card slot on your PC | SD card or microSD card, depending on the transceiver | Target transceiver whose the repeater list will be updated |

① See the transceiver’s instruction manual for inserting, formatting, and unmounting an SD card.

Table of contents



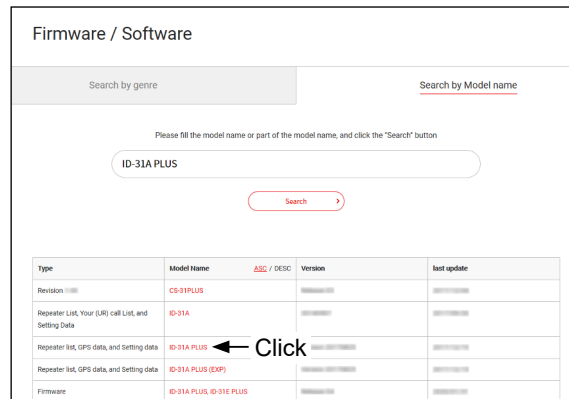
1. Downloading the repeater list

You can download the latest repeater list for your transceiver from the Icom website.

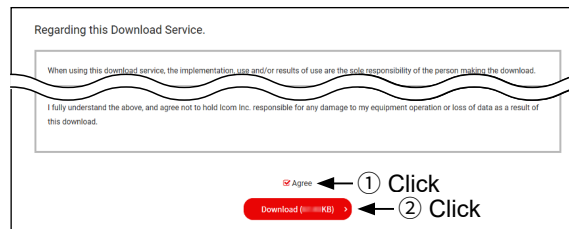
① All stated downloading steps are typical and subject to change without notice or obligation.

Example: ID-31A PLUS

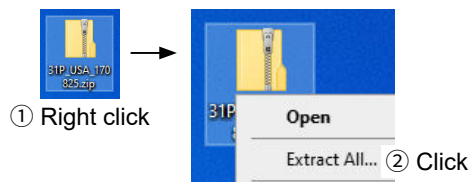
1. Access the following URL to download the data file.
<https://www.icomjapan.com/support/>
2. Click "ID-31A PLUS" from "Firmware/Software."
 - The repeater list and GPS data (CSV: Comma Separated Values file), and settings file (ICF file) are contained in the downloaded ZIP file.



3. Read carefully "Regarding this Download Service.," and if you agree to the terms and conditions, check the "Agree" box and then click "Download."



4. Click "Save as."
5. Select the destination to save the file, and then click "Save" to download it onto your PC.
6. Decompress the file that is downloaded from the Icom website.
 - "31P_USA_yymmdd*" folder is created in the same place where the downloaded file is saved.
 - * The date may differ, depending on the updated date.



2. Copying the file to the SD card

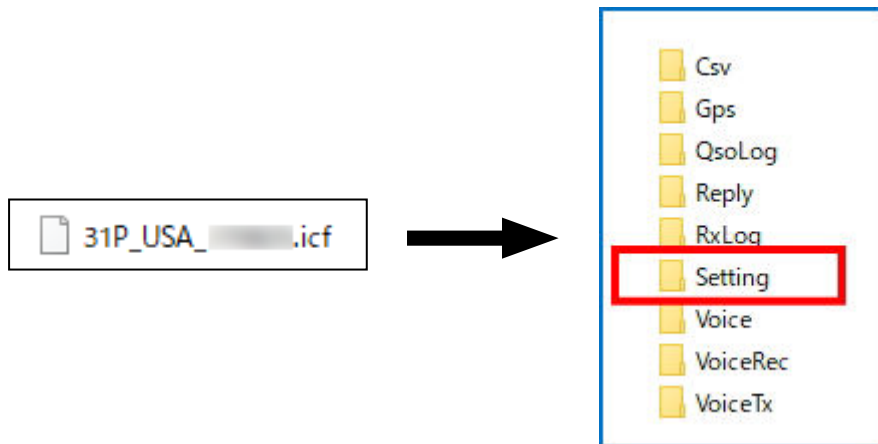
Copy the repeater list to the specific folder of the SD card.

① The file format and folder name may differ, depending on the transceiver.

① Before using the SD card for the first time, format it in the transceiver.

When importing the repeater list from the ICF file:

- Copy the ICF file and paste it in the “Setting” folder of the SD card.



When importing the repeater list from the CSV file:

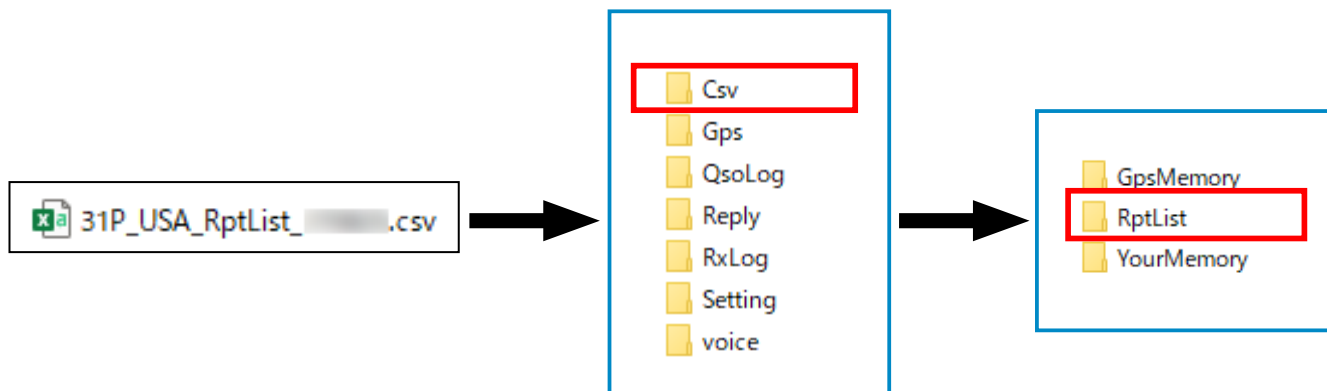
- Copy the CSV file and paste it in the “RptList” folder of the SD card.

① You can import one CSV file to the transceiver.

① The ID-31A*, ID-31E*, ID-51A*, ID-51E*, and IC-7100 are not compatible with importing the CSV file.

* The following transceivers can import the repeater list from the CSV file:

ID-31A PLUS, ID-31E PLUS, ID-51A/E (PLUS, PLUS2, 50th Anniversary model)



3. Updating the repeater list

Remove the SD card from your PC, insert it into the transceiver's slot, and then turn ON the transceiver.

① Updating the latest repeater list overwrites the repeater that you have added.

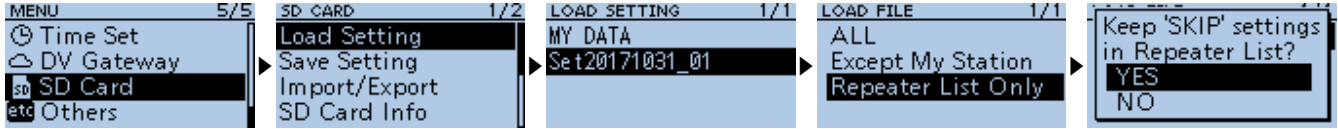
We recommend that you save the current data before loading other data into the transceiver.

① When another SD card is inserted into the transceiver, turn OFF the transceiver, or electrically unmount the SD card before removing it from the transceiver.

When importing the repeater list from the ICF file:

Push [MENU] (or [SET]) on the transceiver, and import the ICF file copied to the SD card, as shown below.

Example: ID-31A PLUS



→ “SD Card”

→ Select a file on the “Load Setting.”

→ “Repeater List Only”

→ “YES” or “NO” to “Keep ‘SKIP’ settings in Repeater List?”

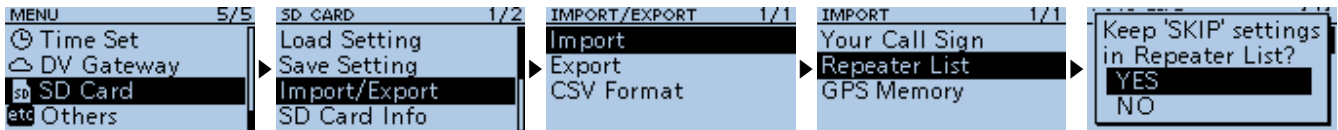
→ “YES” (Import)

① When “Repeater List Only” is selected on the “Load File” screen (you select “Repeater List Only” on the “Load File” screen), the RX logs and UR call signs that you have added are deleted.

When importing the repeater list from the CSV file:

Push [MENU] on the transceiver, and import the CSV file copied to the SD card, as shown below.

Example: ID-31A PLUS



→ “SD Card”

→ “Import/Export”

→ “Import”

→ Select a file on the “Repeater List.”

→ “YES” or “NO” to “Keep ‘SKIP’ settings in Repeater List?”

→ “YES” (Import)

4. Q&A

What is an “ICF” file?

→ A file for cloning (programming) software that saves all the setting information for the transceiver.

What are “compress” and “decompress”?

→ “Compress”: Reduces large-capacity data or combines a lot of data into one data.

“Decompress”: Restores “compressed” files.

What is a “zip” format?

→ The “zip” format is one of the compression formats that is supported by Windows as standard.

The transceiver cannot read an ICF file.

→ A file is for a different product. (Example: Read data for the ID-51A/E to the ID-51A/E PLUS.)

→ There is no file in the “Setting” folder.

→ The transceiver’s firmware is the initial version that the repeater list cannot be updated using an SD card. (Example: IC-7100)

The transceiver cannot read a CSV file.

→ The file has not been copied to the specific folder.

→ The filename has been changed.

① **DO NOT** change the file name and use it as it is downloaded. If you need to change it, check the following conditions (except for the extension).

- IC-705, IC-9700, ID-52A/E: 23 characters
- ID-5100A/E, ID-4100A/E: 20 characters
- Models other than the above: 15 characters

What is the difference between “Import” and “Load Setting”?

→ You can update the repeater list by selecting either way.

“Import”: Reads a file (CSV format) containing only repeater information. Therefore the processing time is fast.

“Load Setting”: Extracts only the repeater information from all the setting information for cloning (programming) software, and imports it into the transceiver.

What kind of SD card can be used with a transceiver?

→ You can use the following SD cards:

- An SD card with a capacity up to 2GB.
 - An SDHC card with a capacity up to 32GB.
- ① Security-Compatible SD cards cannot be used.

Do you need to format an SD card that has been formatted on a PC again on a transceiver?

→ Yes, formatting is required.

→ When you format an SD card on the transceiver, the SD card can be used correctly.

→ The necessary folder is automatically created in the SD card.