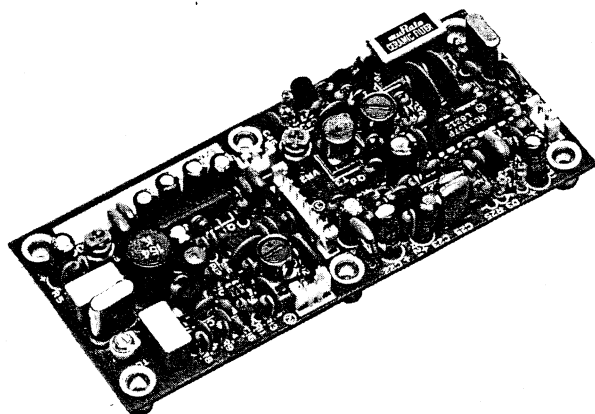


### OUTSIDE VIEW



### PARTS LIST

#### SEMICONDUCTOR

N : New parts

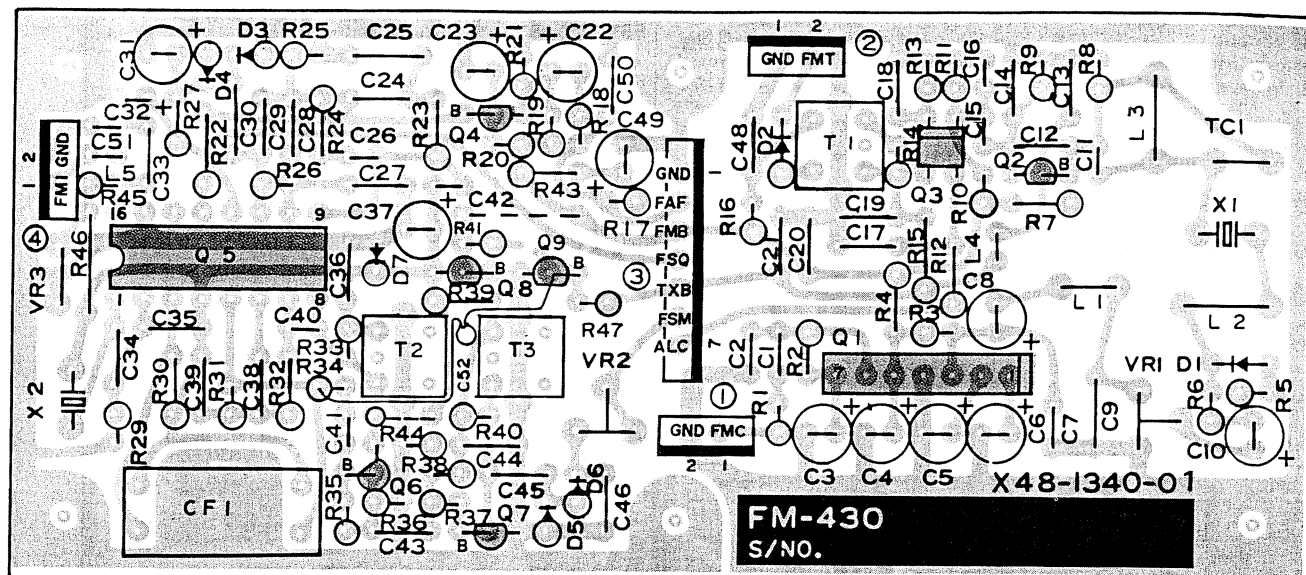
| Item           | Re-<br>marks | Name        | Item | Re-<br>marks | Name      |
|----------------|--------------|-------------|------|--------------|-----------|
| Diode          |              | 1N60        | FET  |              | 3SK73(GR) |
|                |              | 1S1555      |      |              |           |
|                |              | 1S2208      |      |              |           |
| Zener<br>diode |              | WZ-071      | IC   |              | MC3357P   |
|                |              |             |      |              | TA7061AP  |
|                |              |             |      |              |           |
| TR             |              | 2SA1015(Y)  |      |              |           |
|                |              | 2SC460(B)   |      |              |           |
|                |              | 2SC1815(Y)  |      |              |           |
|                |              | 2SC2240(GR) |      |              |           |

| Part No.              | Re-<br>marks | Description             | Ref. No. |
|-----------------------|--------------|-------------------------|----------|
| <b>FM-430 GENERAL</b> |              |                         |          |
| B50-4029-00           | N            | Instruction manual      |          |
| H01-4471-13           | N            | Packing carton (inside) |          |
| H12-0483-04           |              | Cushion                 |          |
| H25-0029-04           |              | Protective bag, Screw   |          |
| H25-0120-04           |              | Protective bag, Unit    |          |
| J61-0401-05           |              | Nylon band x 4          |          |
| N87-3012-46           |              | Self tapping screw x 6  |          |
| X48-1340-01           | N            | FM unit                 |          |

| Part No.                     | Re-<br>marks | Description             | Ref. No.                     | Q'ty |
|------------------------------|--------------|-------------------------|------------------------------|------|
| <b>FM UNIT (X48-1340-01)</b> |              |                         |                              |      |
| C05-0031-15                  |              | Ceramic trimmer 10P     | TC1                          | 1    |
| CC45SL1H050C                 | C            | 5P                      | C15                          | 1    |
| CC45SL1H101J                 | C            | 100P                    | C29                          | 1    |
| CC45SL1H120J                 | C            | 12P                     | C40                          | 1    |
| CC45SL1H121J                 | C            | 120P                    | C34                          | 1    |
| CC45SL1H150J                 | C            | 15P                     | C51                          | 1    |
| CC45SL1H220J                 | C            | 22P                     | C16,41                       | 2    |
| CC45SL1H221J                 | C            | 220P                    | C12,14                       | 2    |
| CC45SL1H560J                 | C            | 56P                     | C35                          | 1    |
| CC45SL1H680J                 | C            | 68P                     | C27,28                       | 2    |
| CC45UJ1H070D                 | C            | 7P                      | C11                          | 1    |
| CE04W1A101M                  | E            | 100 10V                 | C37                          | 1    |
| CE04W1A220M                  | E            | 22 10V                  | C4,23                        | 2    |
| CE04W1A470M                  | E            | 47 10V                  | C3,6                         | 2    |
| CE04W1E4R7M                  | E            | 4.7 25V                 | C49                          | 1    |
| CE04W1H010M                  | E            | 1 50V                   | C5,8,10,22,31                | 5    |
| CK45B1H102K                  | C            | 0.001                   | C26,45                       | 2    |
| CK45B1H152K                  | C            | 0.0015                  | C42                          | 1    |
| CK45F1H103Z                  | C            | 0.01                    | C13,17,20,21,33,<br>36,43,46 | 8    |
| CK45F1H223Z                  | C            | 0.022                   | C18,19,44,48                 | 4    |
| CK45F1H473Z                  | C            | 0.047                   | C38,39                       | 2    |
| CQ92M1H103K                  | ML           | 0.01                    | C2,7,24                      | 3    |
| CQ92M1H333K                  | ML           | 0.033                   | C50                          | 1    |
| CQ92M1H393K                  | ML           | 0.039                   | C9                           | 1    |
| CQ92M1H472K                  | ML           | 0.0047                  | C1                           | 1    |
| CQ92M1H473K                  | ML           | 0.047                   | C25,30                       | 2    |
| CS15E1C2R2M                  | T            | 2.2 16V                 | C32                          | 1    |
| E40-0273-05                  |              | Mini connector 2P       |                              | 3    |
| E40-0773-05                  |              | Mini connector 7P       |                              | 1    |
| J31-0502-04                  |              | PC board collar         |                              | 6    |
| J42-0428-05                  |              | PC board bushing        |                              | 6    |
| L30-0199-06                  |              | Tuning coil             | T3                           | 1    |
| L30-0503-05                  |              | Tuning coil             | T2                           | 1    |
| L34-0535-05                  |              | Tuning coil             | T1                           | 1    |
| L33-0639-05                  |              | Choke coil 10μH         | L3                           | 1    |
| L33-0640-05                  |              | Choke coil 12μH         | L2                           | 1    |
| L40-1511-03                  |              | Ferri-inductor 150μH    | L4                           | 1    |
| L40-1541-27                  |              | Ferri-inductor 150mH    | L1                           | 1    |
| L40-6891-01                  |              | Ferri-inductor 6.8μH    | L5                           | 1    |
| C72-0309-06                  |              | Ceramic filter CFT455F2 | CF1                          | 1    |
| C77-0939-05                  |              | Crystal 9.2865MHz       | X2                           | 1    |
| C77-0940-05                  |              | Crystal 8.8315MHz       | X1                           | 1    |
| R12-3430-05                  |              | Trim. pot. 10kΩ(B)      | VR1                          | 1    |
| R12-4408-05                  |              | Trim. pot. 50kΩ(B)      | VR2                          | 1    |
| R12-4410-05                  |              | Trim. pot. 50kΩ         | VR3                          | 1    |
| R92-0150-05                  |              | Short jumper            |                              | 2    |

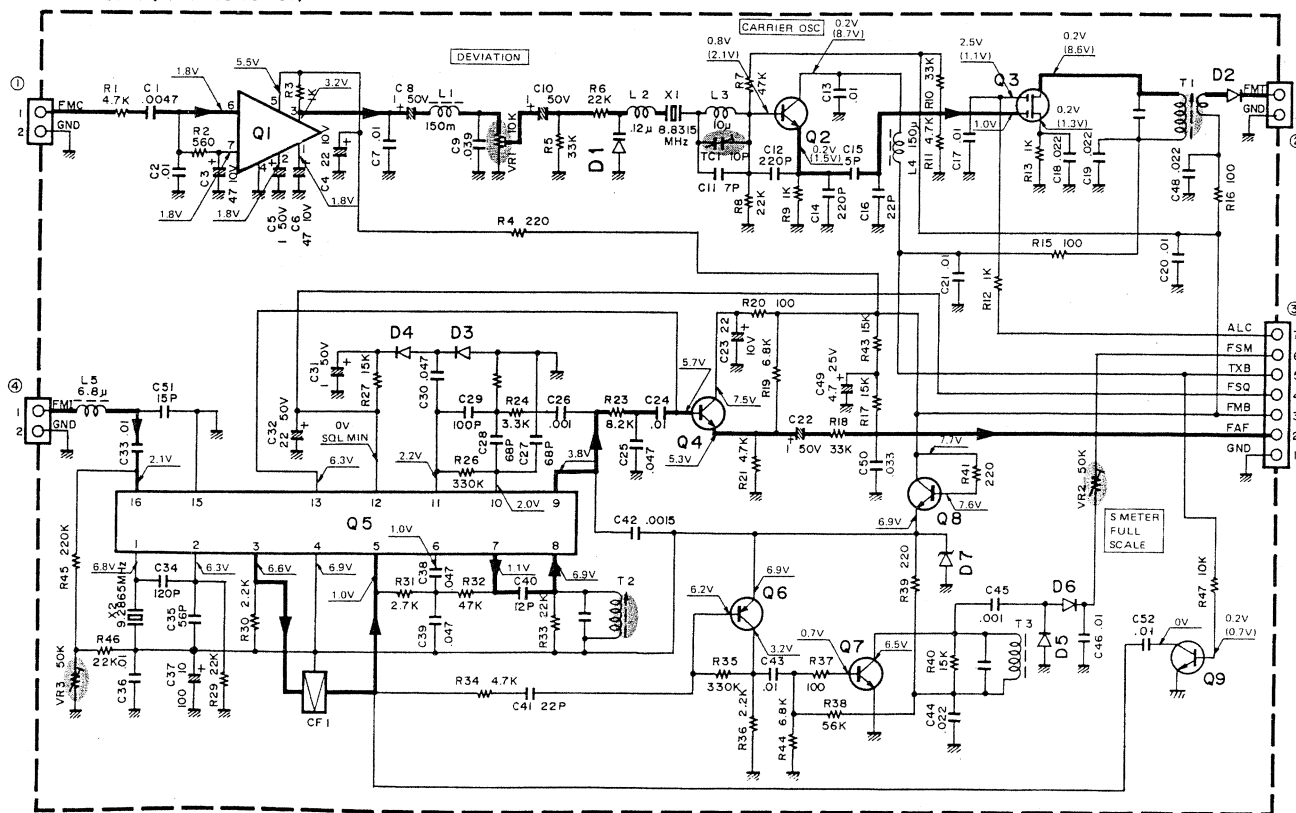
## FM-430

### PC BOARD VIEW



### SCHEMATIC DIAGRAM

FM UNIT (X48-I340-01)



2SA1015 2SC1815  
2SC2240

2SC460

TC7061AP

Q1 : TA7061AP  
Q2 : 2SC460(B)  
Q3 : 3SK73(GR)  
Q4 : 2SC2240(GR)

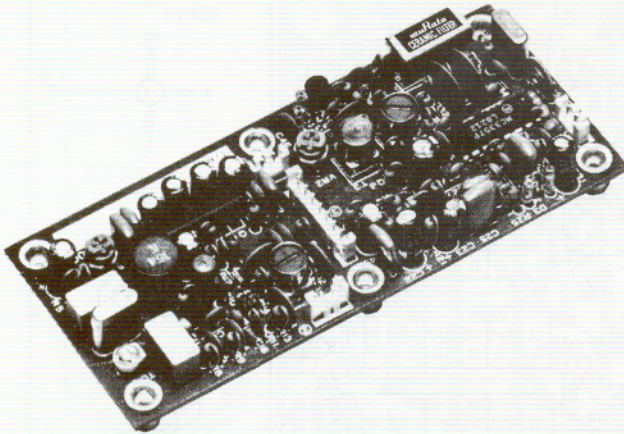
Q5 : MC3357P  
Q6 : 2SA1015(Y)  
Q7~9 : 2SC1815(Y)

D1 : IS2208  
D2 : IS1555  
D3~6 : IN60  
D7 : WZ071



## OPTION (FM-430)

### OUTSIDE VIEW



### PARTS LIST

#### SEMICONDUCTOR

N : New parts

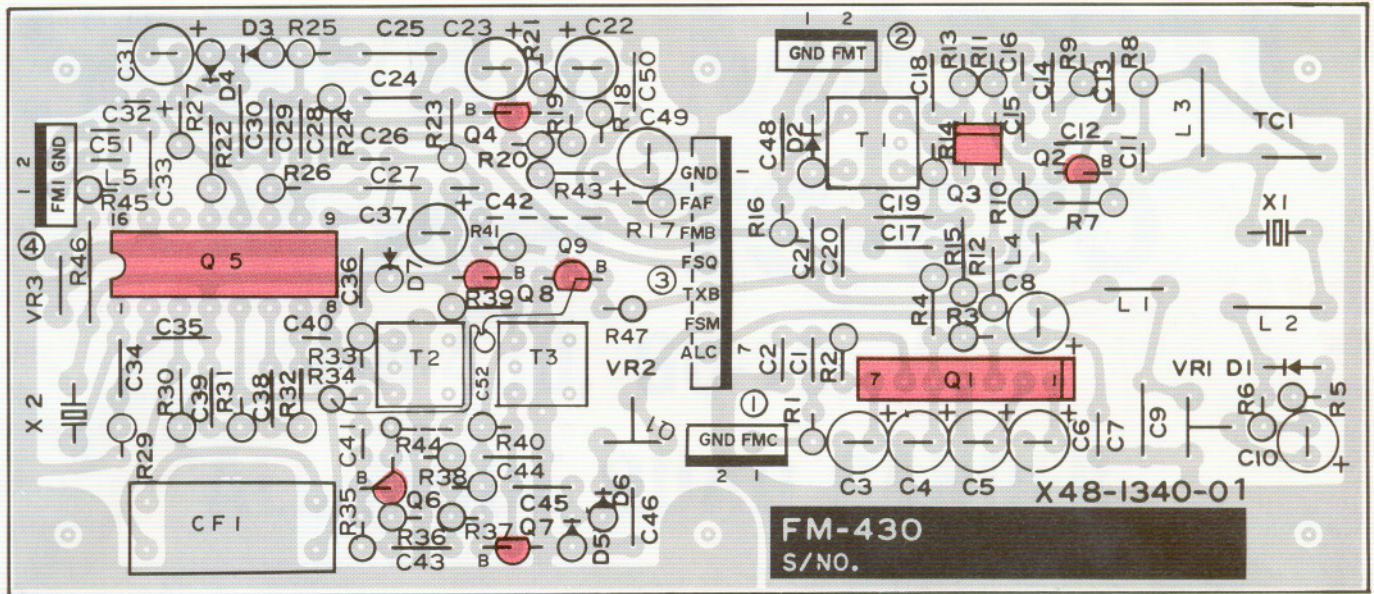
| Item                          | Re-<br>marks | Name        | Item       | Re-<br>marks | Name      |
|-------------------------------|--------------|-------------|------------|--------------|-----------|
| <b>Diode</b>                  |              | 1N60        | <b>FET</b> |              | 3SK73(GR) |
|                               |              | 1S1555      |            |              | MC3357P   |
|                               |              | 1S2208      |            |              | TA7061AP  |
| <b>Zener<br/>diode<br/>TR</b> |              | WZ-071      |            |              |           |
|                               |              | 2SA1015(Y)  |            |              |           |
|                               |              | 2SC460(B)   |            |              |           |
|                               |              | 2SC1815(Y)  |            |              |           |
|                               |              | 2SC2240(GR) |            |              |           |

| Part No.              | Re-<br>marks | Description             | Ref. No. |
|-----------------------|--------------|-------------------------|----------|
| <b>FM-430 GENERAL</b> |              |                         |          |
| B50-4029-00           | N            | Instruction manual      |          |
| H01-4471-13           | N            | Packing carton (inside) |          |
| H12-0483-04           |              | Cushion                 |          |
| H25-0029-04           |              | Protective bag, Screw   |          |
| H25-0120-04           |              | Protective bag, Unit    |          |
| J61-0401-05           |              | Nylon band x 4          |          |
| N87-3012-46           |              | Self tapping screw x 6  |          |
| X48-1340-01           | N            | FM unit                 |          |

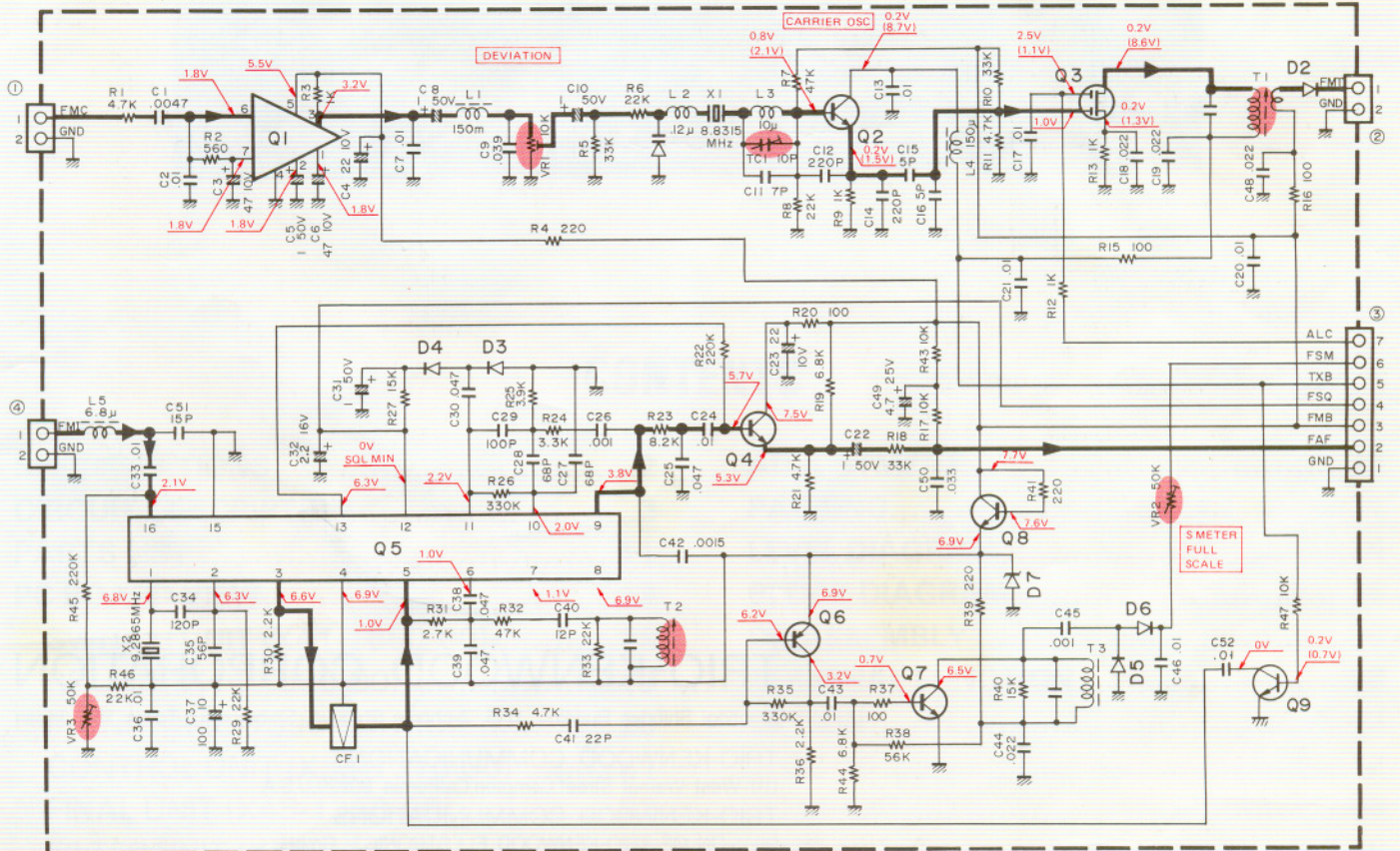
| Part No.                     | Re-<br>marks | Description             | Ref. No.                     | Q'ty |
|------------------------------|--------------|-------------------------|------------------------------|------|
| <b>FM UNIT (X48-1340-01)</b> |              |                         |                              |      |
| C05-0031-15                  |              | Ceramic trimmer 10P     | TC1                          | 1    |
| CC45SL1H050C                 | C            | 5P                      | C15                          | 1    |
| CC45SL1H101J                 | C            | 100P                    | C29                          | 1    |
| CC45SL1H120J                 | C            | 12P                     | C40                          | 1    |
| CC45SL1H121J                 | C            | 120P                    | C34                          | 1    |
| CC45SL1H150J                 | C            | 15P                     | C51                          | 1    |
| CC45SL1H220J                 | C            | 22P                     | C16,41                       | 2    |
| CC45SL1H221J                 | C            | 220P                    | C12,14                       | 2    |
| CC45SL1H560J                 | C            | 56P                     | C35                          | 1    |
| CC45SL1H680J                 | C            | 68P                     | C27,28                       | 2    |
| CC45UJ1H070D                 | C            | 7P                      | C11                          | 1    |
| CE04W1A101M                  | E            | 100 10V                 | C37                          | 1    |
| CE04W1A220M                  | E            | 22 10V                  | C4,23                        | 2    |
| CE04W1A470M                  | E            | 47 10V                  | C3,6                         | 2    |
| CE04W1E4R7M                  | E            | 4.7 25V                 | C49                          | 1    |
| CE04W1H010M                  | E            | 1 50V                   | C5,8,10,22,31                | 5    |
| CK45B1H102K                  | C            | 0.001                   | C26,45                       | 2    |
| CK45B1H152K                  | C            | 0.0015                  | C42                          | 1    |
| CK45F1H103Z                  | C            | 0.01                    | C13,17,20,21,33,<br>36,43,46 | 8    |
| CK45F1H223Z                  | C            | 0.022                   | C18,19,44,48                 | 4    |
| CK45F1H473Z                  | C            | 0.047                   | C38,39                       | 2    |
| CQ92M1H103K                  | ML           | 0.01                    | C2,7,24                      | 3    |
| CQ92M1H333K                  | ML           | 0.033                   | C50                          | 1    |
| CQ92M1H393K                  | ML           | 0.039                   | C9                           | 1    |
| CQ92M1H472K                  | ML           | 0.0047                  | C1                           | 1    |
| CQ92M1H473K                  | ML           | 0.047                   | C25,30                       | 2    |
| CS15E1C2R2M                  | T            | 2.2 16V                 | C32                          | 1    |
| E40-0273-05                  |              | Mini connector 2P       |                              | 3    |
| E40-0773-05                  |              | Mini connector 7P       |                              | 1    |
| J31-0502-04                  |              | PC board collar         |                              | 6    |
| J42-0428-05                  |              | PC board bushing        |                              | 6    |
| L30-0199-06                  |              | Tuning coil             | T3                           | 1    |
| L30-0503-05                  |              | Tuning coil             | T2                           | 1    |
| L34-0535-05                  |              | Tuning coil             | T1                           | 1    |
| L33-0639-05                  |              | Choke coil 10μH         | L3                           | 1    |
| L33-0640-05                  |              | Choke coil 12μH         | L2                           | 1    |
| L40-1511-03                  |              | Ferri-inductor 150μH    | L4                           | 1    |
| L40-1541-27                  |              | Ferri-inductor 150mH    | L1                           | 1    |
| L40-6891-01                  |              | Ferri-inductor 6.8μH    | L5                           | 1    |
| C72-0309-06                  |              | Ceramic filter CFT455F2 | CF1                          | 1    |
| C77-0939-05                  |              | Crystal 9.2865MHz       | X2                           | 1    |
| C77-0940-05                  |              | Crystal 8.8315MHz       | X1                           | 1    |
| R12-3430-05                  |              | Trim. pot. 10kΩ(B)      | VR1                          | 1    |
| R12-4408-05                  |              | Trim. pot. 50kΩ(B)      | VR2                          | 1    |
| R12-4410-05                  |              | Trim. pot. 50kΩ         | VR3                          | 1    |
| R92-0150-05                  |              | Short jumper            |                              | 2    |



## OPTION (FM-430)



FM UNIT(X48-1340-01)



- 2SA1015 2SC1815  
2SC2240

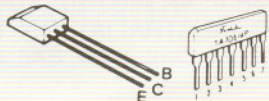
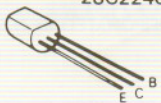
2SC460

TA7061AP

- Q1 : TA7061AP  
Q2 : 2SC460(B)  
Q3 : 3SK73(GR)  
Q4 : 2SC2240(GR)

- Q5 : MC3357P  
Q6 : 2SA1015(Y)  
Q7~9: 2SC1815(Y)

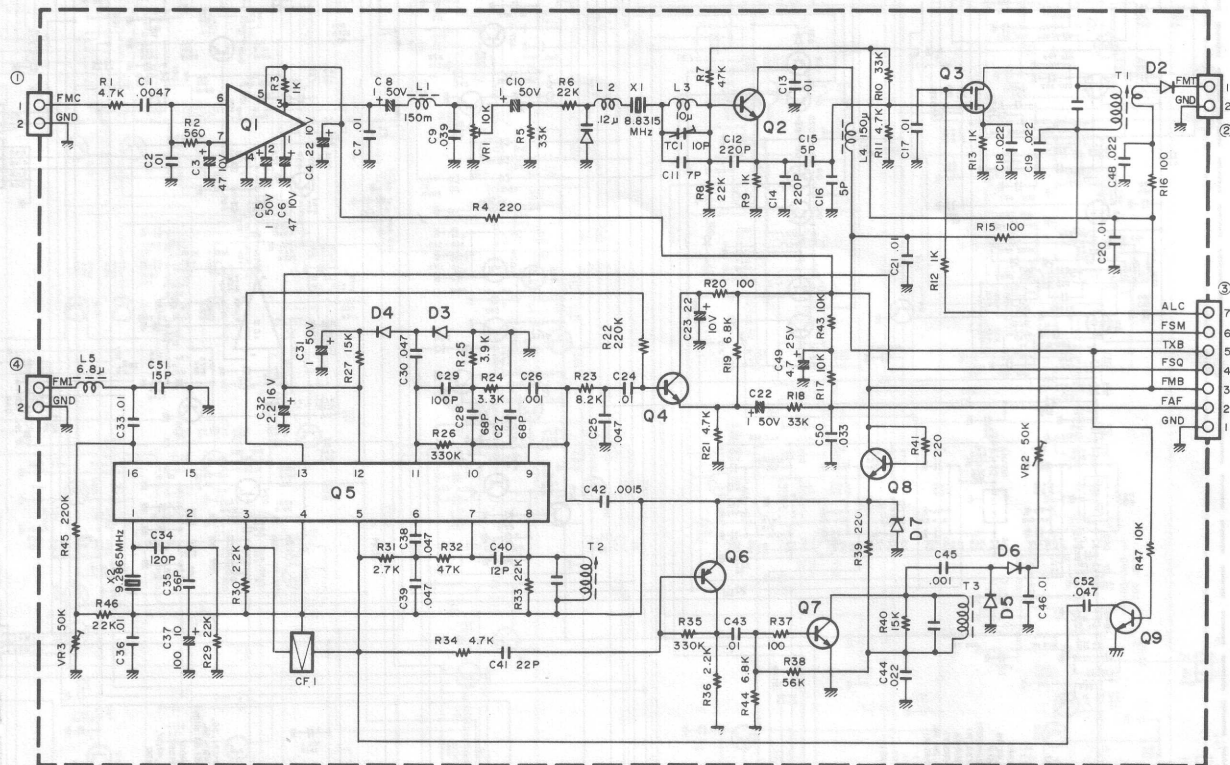
- D1 : IS2208  
D2 : IS1555  
D3 ~ 6 : IN60  
D7 : MTZ7.5JA





# FM-430 (OPTION)

FM UNIT(X48-1340-01)



|    |               |      |              |      |            |
|----|---------------|------|--------------|------|------------|
| Q1 | : TA7061AP    | Q5   | : MC3357P    | D1   | : IS2208   |
| Q2 | : 2SC460(B)   | Q6   | : 2SA1015(Y) | D2   | : IS1555   |
| Q3 | : 3SK73(GR)   | Q7~9 | : 2SC1815(Y) | D3~6 | : IN60     |
| Q4 | : 2SC2240(GR) |      |              | D7   | : MTZ7.5JA |