

KENWOOD

TH-G71A FM DUAL BANDER

A cut above – meet Kenwood's new TH-G71A FM dual-bander (144MHz/440MHz) with its 6 watts of power and distinctive illuminated keypad.



Sharp Distinction: The Brighter Side of Handy Communications

It only takes one glance to see that Kenwood's new TH-G71A dual-bander (144MHz/440MHz) is something special. The brightly illuminated keypad and LCD, high-performance antenna, and typically stylish yet ergonomic design set it apart. But this compact handheld transceiver is distinguished internally too, offering a rich selection of features that would normally be found only on much more expensive HTs. Added value is the essence.

Illuminated keypad, Memory Name function

Priority has been put on convenience, something that is instantly clear whether you are HT-experienced or not. The illuminated keypad and backlit LCD are ideal for nighttime operation, and the Memory Name function allows you to identify each channel with up to 6 alphanumeric characters.

Menu mode

Convenience on the TH-G71A is further enhanced by a menu system that gives you full control over all operating settings – including scan, memory recall, programmable VFO, battery save, auto-power off, and DTMF.



Beat the traffic! Get tough on intermodulation interference.

Powerful performance

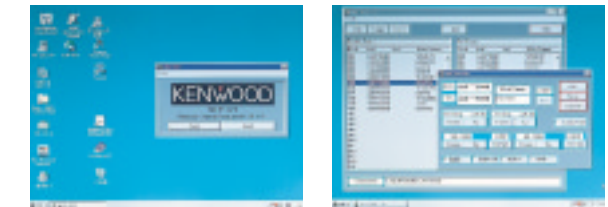
With its high-performance antenna, the TH-G71A can provide up to 6 watts (VHF) or 5.5 watts (UHF) of RF output using a direct 13.8V supply. You can choose HI, LOW, or EL output levels to suit the situation. And you'll also appreciate the powerful, exceptionally clear audio output.

200 multi-function memory channels

This is a transceiver that means business: its generous 200-channel memory capacity can be used to store transmit and receive frequencies (independently), frequency step, and tone frequency.

PC ready

You can transfer memory information to your computer for later retrieval.



Multi-scan functions

In addition to full band and program band scans, memory scan with memory channel lock-out, MHz scan, call scan and priority scan are also available. For each band there are TO (time-operated), CO (carrier-operated), and seek resume modes.

CTCSS encoder/decoder

The built-in CTCSS (Continuous Tone Coded Squelch System) encoder/decoder enables operation of the 38 EIA-standard CTCSS subtone frequencies.

DTMF remote control

With full wireless remote control at your fingertips, you can turn your car's transceiver into a repeater at any time.

Rugged reliability

The case of the TH-G71A is constructed from tough polycarbonate to withstand shocks. But it is also tightly sealed, meeting the strict MIL-STD 810E standards for water and shock resistance.



- DTMF memory**
- Function key lock**
- Auto power-off**
- Auto battery-saver circuit**
- Time-out timer**



Optional Accessories

PB-38

Standard Battery Pack
(6.0 V, 650 mAh)



PB-39

High-Power Battery Pack
(9.6 V, 600 mAh)



BT-11

Battery Case (4 x AA)



BC-19

Rapid Charger



SC-45

Soft Case



SMC-32

Speaker Microphone



SMC-33

Remote Control Speaker Microphone



SMC-34

Speaker Microphone with
3 function keys & volume control



HMC-3

Head Set (VOX & PTT)



EMC-3

Clip Microphone with Earphone



PG-4P

PC Connection Cable



PG-3J

Filtered Cigar Lighter Cord



PG-2W

DC Cable



Not all products are available in all markets.

Specifications

TH-G71A

GENERAL

Frequency Range	144 MHz	TX: 144 ~ 148 MHz RX: 118 ~ 174 MHz
	440 MHz	TX: 430 ~ 450 MHz RX: 400 ~ 470 MHz
Mode		F3E (FM)
Antenna Impedance		50 Ω
Operating Temperature Range		-4° ~ +140° F (-20° ~ +60° C)
Power Requirement (nominal)		
External		DC 5.5 ~ 16 V (13.8 V)
Battery		DC 4.5 ~ 15 V (6.0 V)
Microphone Impedance		2 kΩ
Dimensions (W x H x D) [projections not included]		2-5/16"x 4-7/16"x 1-5/16" (54 x 112 x 33.5 mm) [with PB-38]
Weight		11.6 oz (330 g) [with PB-38]

TRANSMITTER

RF Output Power (approx.)		
HI (13.8V DC)		6 W (VHF), 5.5 W (UHF)
PB-39 (9.6V)		5 W (VHF/UHF)
PB-38, BT-11 (6.0V)		2.5 W (VHF), 2.2 W (UHF)
LO		0.5 W
EL		50 mW
Modulation		Reactance modulation
Maximum Frequency Deviation		Less than ±5 kHz
Spurious Radiation		Less than -60 dB
Modulation Distortion		Less than 3% (300 Hz ~ 3 kHz)

RECEIVER

Circuitry		Double Super Heterodyne
Intermediate Frequency		
1 st IF		38.85 MHz
2 nd IF		450 kHz
Sensitivity (12 dB SINAD)		Less than 0.18 μV
Squelch Sensitivity		Less than 0.1 μV
Selectivity		
-6 dB		More than 12 kHz
-40 dB		Less than 28 kHz
Audio Output Power		
9.6V (10% distortion)		More than 500 mW
6.0V (10% distortion)		More than 300 mW

Kenwood follows a policy of continuous advancement in development. For this reason specifications may be changed without notice. These specifications are guaranteed for Amateur Bands only.



ISO 9001
JQA-1205

Communications Equipment Division
Kenwood Corporation
ISO9001 certification

KENWOOD CORPORATION

14-6, 1-chome, Dogenzaka, Shibuya-ku, Tokyo 150-8501, Japan

KENWOOD COMMUNICATIONS CORPORATION

AMATEUR RADIO PRODUCTS GROUP

P.O. Box 22745, 2201 East Dominguez St., Long Beach, CA 90801-5745, U.S.A.

KENWOOD ELECTRONICS CANADA INC.

6070 Kestrel Road, Mississauga, Ontario, Canada L5T 1S8