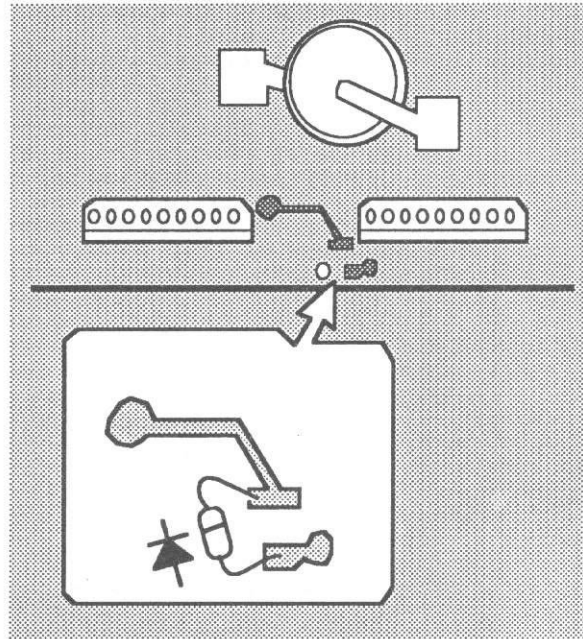
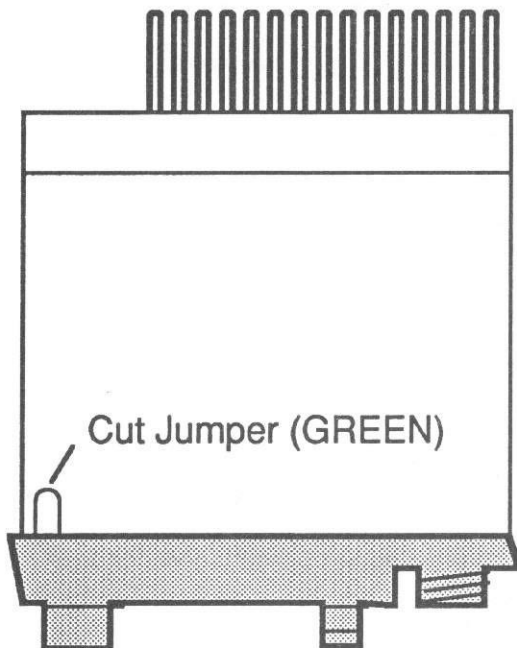


# KENWOOD TM-231A

## EXPANDED RF M/C

1. Disconnect the power and antenna.
2. Remove the top and bottom cover.
3. Remove all knobs from the front panel.
4. Remove the nut from the mic jack and the nut from the channel switch.
5. Remove four screws holding the front panel.
6. Remove the three screws from the control board.
7. Locate the green jumper wire sticking out the front panel, behind the VFO button
8. Cut the green jumper and tape the edges to prevent them from shorting.
9. Install diode D209 Part # MA141A on control board X57-3310-11.
10. Reassemble the radio
11. Reset the microprocessor. (Press and hold [MR] while turning on the power)



**Caution**

These modifications have not been tested. The Author, Publisher and all other parties takes NO responsibility or liability for any damage or violation resulting from these modifications. Performing any modification may be a Violation of FCC Rules and will void the warranty of the radio. Use of any modified radio may be a violation of FCC rules. If you have any doubts, DO NOT PERFORM THIS MODIFICATION.

© 1991 artsci inc. all rights reserved. (818) 843-4080 Fax: (818) 846-2298