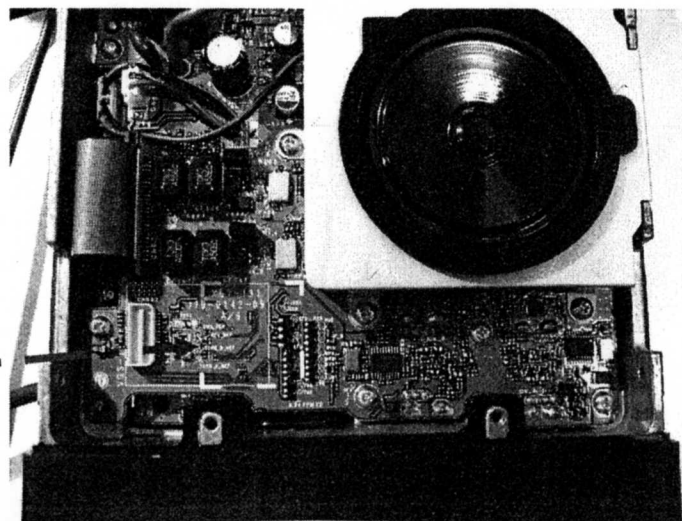


# TM-D710E – PROCEDURA PER L'ESTENSIONE DI FREQUENZA IN TX & RX

1. Rimuovere il coperchio anteriore
2. Aprire delicatamente l'apparecchio e individuare la parte in basso a sinistra sulla quale si dovrà intervenire
3. Per abilitare l'estensione di frequenza in TX & RX bisogna dissaldare e rimuovere la resistenza **R 658**
4. Pulire le isole del PCB della radio e rimontare l'apparecchio con estrema cura, facendo attenzione alla corretta collocazione del coperchio anteriore rimontando le rispettive viti anteriori e laterali.
5. Dopo la modifica accendere e spegnere l'apparato (reset) . Se e' necessario salvare in memoria i canali precedenti utilizzando il software MCP-2A in modo da recuperare i dati e riutilizzare il file anche dopo la modifica.

Area di intervento



Downloaded by ☐  
RadioAmateur.EU

# TM-D710E – ESTENSIONE DI FREQUENZA IN TX & RX

## TM-V71A/E Modification Procedures (M4/E Type)

- **STESSE X TM-D710E**

### Modification Outline

(1) Expansion of the transmission and reception frequencies

After shipment of the product, expansion of the frequencies is possible by modifying the configuration of the chip jumpers.

Chip jumper configuration

Refer to the table below [Table 1]

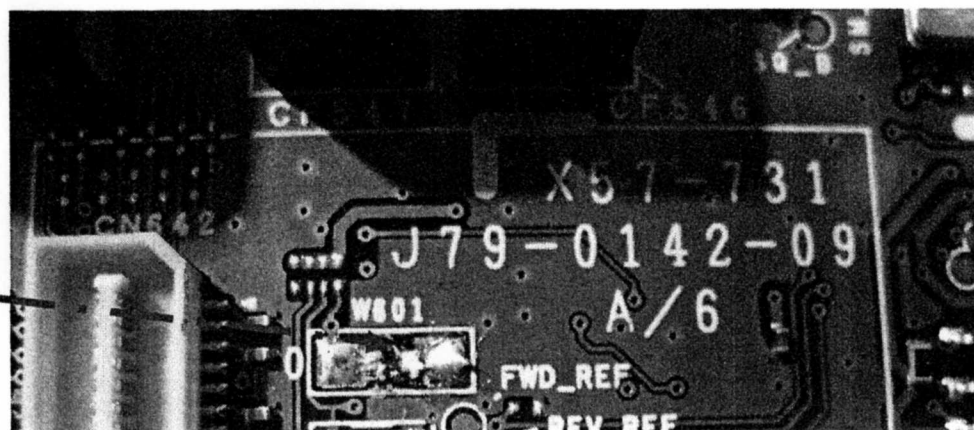
[Table 1]

Chip jumper		R974	R971	R967	R656	R658
TM-V71E E type	Factory default setting	x	○	x	x	○
	Transmission and reception expansion	x	○	x	x	x

\* Receiving band in the TM-V71E for E type has already been expanded before factory.

○: With Chip jumper, x: Without Chip jumper

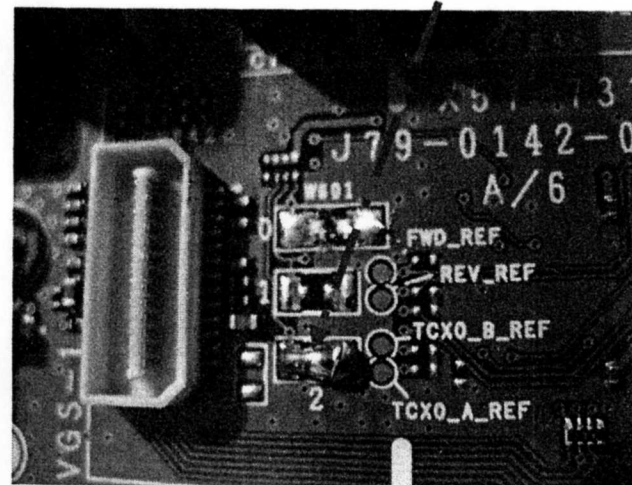
Per abilitare l'estensione di  
frequenza in TX & RX  
rimuovere la resistenza **R658**



# TM-D710E – PROCEDURE PER ABILITARE LA FUNZIONE CROSS BAND/LOCKED BAND REPEATER MODALITA' TRANSPONDER-

1. Per abilitare la funzione Cross Band / Locked Band Repeater e tutte le successive funzioni elencate, sulla piazzola **dove dovrebbe esserci la R654**, eseguire un jumper con stagno.
2. Pulire le isole del PCB della radio e rimontare l'apparecchio con estrema cura, facendo attenzione alla corretta collocazione del coperchio anteriore rimontando le rispettive viti anteriori e laterali.
3. Seguire le istruzioni nelle pagine successive per abilitare le funzioni tramite frontalino

- Cross Band / Locked – Band Repeater
- Repeater Trasmission Hold
- Reapeater Trasmission Hold
- Repeater ID Trasmission
- Repeater ID registration
- Menu Mode & Menu Function



# TM-D710E – FUNZIONE CROSS BAND/LOCKED

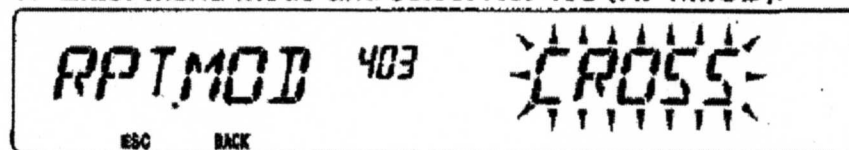
## Cross-Band/Locked-Band Repeater

### Outline of functions

- When a busy signal is received on one band, this function changes the other band to transmission status and modulates the reception audio signal. When the busy signal disappears from the reception band, both bands are quickly changed to reception status.
- The cross-band receiver waits for a busy signal from both the A and B bands and then switches the opposite band from where the busy signal was received to the operation/transmission band.
- The locked-band repeater waits for a busy signal at the opposite band set on the menu and transmits with the band set on menu.

### Operation

1. Enter menu mode and select No. 403 (RPT.MOD).



2. Set the repeater mode to "CROSS (cross-band)", "A-TX (A band)", or "B-TX (B band)".
3. Turn the power OFF.
4. While holding down [TONE], turn the power ON.
  - When repeater mode is ON, the **P.T.T** and **TX** icons are shown on the display. When the repeater is ON, all transceiver operations are unavailable. (Microphone keys are also unavailable)
5. Once the power is OFF, repeat operation 4 to turn the repeater OFF.

# TM-D710E – FUNZIONE REPEATER TRANSMISSION HOLD

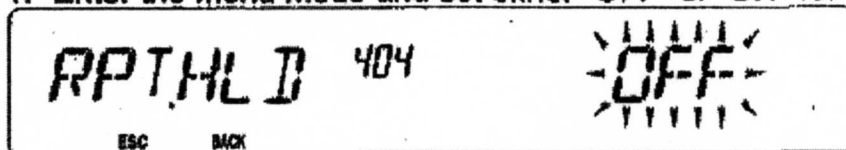
## Repeater Transmission hold

### Outline of functions

- With the repeater ON, this function continues to transmit unconditionally for about 500 [ms] even if the busy signal has disappeared.

### Operation

1. Enter the menu mode and set either "OFF" or "ON" for No. 404 (RPT.HLD).



# TM-D710E – FUNZIONE REPEATER ID TRANSMISSION

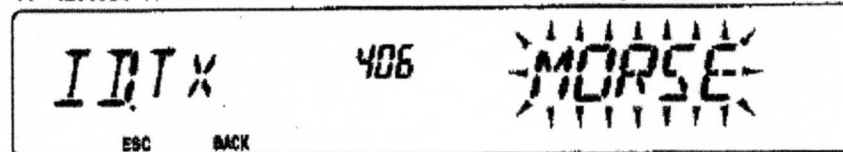
## Repeater ID Transmission

### Outline of functions

- When the cross-band or locked-band repeater is ON, this function transmits the repeater ID (call sign) once every 10 minutes. It is possible to transmit registered repeater IDs by Morse code.

### Operation

1. Enter menu mode and set either "OFF", "MORSE" or "VOICE" for No. 406 (ID.TX).





# TM-D710E – FUNZIONE REPEATER ID REGISTRATION

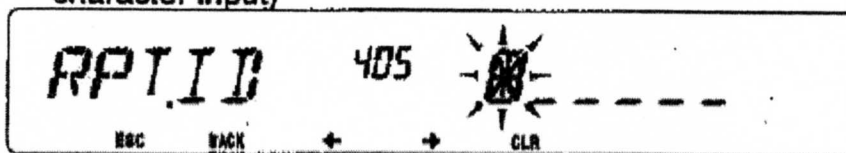
## Repeater ID registration

### Outline of functions

- Configure the repeater ID (call sign) for Morse code transmission.

### Operation

1. Enter the menu mode and set the ID (call sign) for No. 405 (RPT.ID). (Refer to page 6 for information on character input)



# TM-D710E – FUNZIONE MENU MODE

## Menu function operations

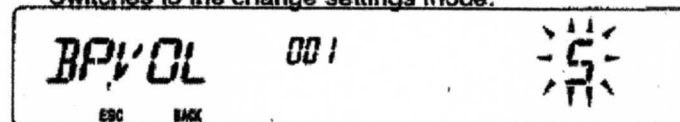
1. Press [F], and then press [TUNING]

This changes to menu mode and the menu items, menu numbers, and current settings are displayed.



2. Turn [TUNING]  
Select menu items.

3. Press [TUNING]  
Switches to the change settings mode.



4. Turn [TUNING]  
Switches the settings.
5. Press [TUNING]  
Changes the settings and you are returned to operation 2 above. Repeat operations 2 through 5 to set each menu.
6. Press [F] (ESC)  
This exits menu mode.



# TM-D710E – FUNZIONE - MENU FUNCTIONS

Listing of Menu Functions (Selections)

Menu No.	Display	Description	Setting Values	Default setting
000	BEEP	Beep sound	OFF/ ON	ON
403	RPT.MOD	Repeater mode	CROSS/ A-TX/ B-TX	CROSS
404	RPT.HLP	Repeater transmission hold	ON/ OFF	OFF
405	RPT.ID	Repeater ID registration	Up to 6 characters	-
406	ID.TX	Repeater ID transmission	OFF/ MORSE/ VOICE	OFF
999	RESET	Reset	VFO/ PART/ PW/ FULL	VFO

Downloaded by ☐  
RadioAmateur.EU

## Character Input

Used when items, such as the repeater ID registration, require the input of characters. When character input is necessary, the cursor blinks.

### 1 Press [TUNING]

The cursor blinks and character input mode is entered.

### 2 Turn [TUNING] and select characters

- When entering the repeater ID (call sign), select from the following:  
0123456789ABCDEFGHIJKLMNPOQRSTUVWXYZ+\*

### 3 Press [TUNING]

Moves the cursor to the next position

- Pressing [REV] (←) moves the cursor to the left and pressing [LOW] (→) moves the cursor to the right. (Unavailable at the start and end position)

### 4 Repeat operations 2 and 3 to input a maximum of 6 characters

- Pressing [PF4] (CLR) erases the character at the selected cursor position. If there is no character at the cursor position, the operation functions as a backspace.

### 5 When the cursor is at the far right, press [TUNING]

The characters are registered and you are returned to the status in operation 1.

- By pressing [TONE] (BACK), the characters are not registered and you are returned to the status in operation 1.

### 6 Press [F] (ESC) to exit menu mode