

KENWOOD

Listen to the Future

TM-V71A

144/440MHz FM TRANSCEIVER

Locked and loaded for action - Kenwood's TM-V71A FM dual bander (144/440MHz) is equipped to shine in any mobile communications role.





The Adventure Awaits

Wherever you are headed, be sure to set off with Kenwood's TM-V71A. Featuring 50W output, 1,000 memory channels, multiple scan options, and PC connectivity (to store and edit data), this advanced FM transceiver is fully equipped to take on the toughest challenges, day or night. Powerful performance is matched with intuitive operational ease: the large LCD panel – with a choice of either amber or green adjustable backlighting – PF keys, and EchoLink® compatibility all help to make this the ideal companion for dependable dual-band communications on the move.



HIGH RF POWER OUTPUT (50W)

The TM-V71A provides an impressive 50 watts of RF power (VHF & UHF), with a choice of High/Mid/Low output.

DUAL RECEIVE ON SAME BAND (VxV, UxU)

In addition to simultaneous receive on both VHF and UHF bands, this radio can receive two frequencies on the very same band. This means, for example, that you can have both the call channel and local channel, or the repeater channel and local channel, on the same band.

COMPATIBLE WITH ARRL TravelPlus*

The MCP-2A programming software is compatible with ARRL TravelPlus For Repeaters; this allows data export to the radio, making trip planning easy.

*TravelPlus is available from the ARRL at www.arrl.org

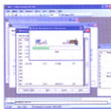


"FIVE-IN-ONE" PROGRAMMABLE MEMORY

For extra versatility, the TM-V71A has a programmable memory that can store five entire operating profiles, ready for instant recall at the push of a button. Each profile includes such settings as display mode, frequency range, and memory mode. It can equally be used to switch between 5 VFO frequencies.

1,000 MULTIFUNCTION MEMORY CHANNELS

There are 1,000 split memory channels for storing essential data — such as transmit and receive frequencies, frequency step, and tone frequency — plus an additional 10 for programmable scan. You can identify each channel with up to 6 alphanumeric characters (Memory Name function). Additionally, memory data can be edited and stored on a PC using the optional PG-5G programming interface cable and MCP-2A Memory Control software (a free download from the Kenwood website*).



*www.kenwood.com/products/info/amateur/software_download.html

MULTIPLE SCAN

As well as VFO scan, program scan, MHz scan, memory scan and call scan, the TM-V71A offers memory bank scan: the 1,000 channels are grouped into 10 banks for selective scanning. Also featured are scan resume (time-operated, carrier-operated, and seek), memory channel lockout, tone scan, CTCSS scan, and DCS scan.

INVERTIBLE FRONT PANEL

For greater installation convenience, the detachable front panel can be inverted so the transceiver can be mounted upside down, thus ensuring that the speaker is not obstructed.



CHOICE OF 2 BACKLIGHT COLORS

To maximize visibility, the backlight color for the large LCD panel can be switched between warm amber and cool green.



Amber

Green

104-CODE DIGITAL CODE SQUELCH

In addition to CTCSS (42 subtone frequencies), the TM-V71A is equipped for DCS (104 codes). Whatever code is chosen, the squelch will only open for reception if the other party uses the identical code.

VOICE GUIDANCE & STORAGE OPTION (VGS-1)

The audible announcement function is enabled for blind-key operation using the optional VGS-1 unit, which also provides up to 30 seconds of continuous recording.



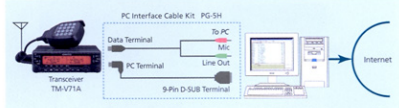
WEATHER ALERT/RX (US only)

This transceiver is capable of receiving the NOAA Weather Band and responding to emergency transmissions such as storm warnings by emitting an audible alert tone.

EchoLink® Sysop MODE FOR NODE TERMINAL OPERATION

When the TM-V71A is connected to a PC (with the necessary Windows-compatible software installed) using the PG-5H option, it can operate as a node terminal for EchoLink®. EchoLink® connects radio amateurs through the Internet using VoIP technology: any transceiver with access to a node can connect to any other in the world as long as it too has node access. It is also possible to access the EchoLink® network directly from a PC.

To register for EchoLink® (using your call sign), access the official website at www.echolink.org.



EchoLink® MEMORY (AUTOMATIC DIALER)

Up to 10 DTMF memory channels dedicated to EchoLink® can store call signs (or conference names) and Node Numbers. Memory Control is also possible using a PC with the MCP-2A software.

other features

- Wide reception: 118-524MHz, 800-1300MHz
- MC-59 16-Key Hand Microphone with backlighting
- Separate VOI/SQL for A & B Bands
- 6-pin Mini-DIN Socket for External TNC
- 8-pin Mini-DIN Socket for PC Connection
- Programmable Function Keys
- Band Mask
- Call Channel
- 5-meter Squelch & Hysteresis Timer
- Monitor Function
- Mute
- 3-hour Auto Power Off
- MHz Mode
- Selectable Frequency Step
- Shift Function
- Repeater Offset (selectable)
- Reverse
- Auto Repeater Offset (on/off, VHF only)
- Automatic Simplex Checker
- DTMF Memory (10 channels, 16 digits)
- DTMF Remote Control
- Time Out Timer
- Key Lock
- Power-on Password
- Memory Shift
- Programmable VFO
- Bleep On/Off, Volume Control
- Mic Program Function
- Channel Display Mode
- Power-on Message
- LCD Brightness Control, Auto Brightness
- Switch to External Speaker
- Reset (VFO, PART, PM, FULL)

*Excluding cellular blocked + frequencies

Optional Accessories



■ **MC-59**
16-Key Hand Microphone



■ **MC-45**
Hand Microphone



■ **PG-2N**
DC-Power Cable



■ **PG-3B**
DC Line Noise Filter



■ **PG-5A**
Data Cable



■ **PG-5F**
Extension Cable Kit (4m)



■ **PG-5G**
Programming Interface
Cable



■ **PG-5H**
PC Interface Cable*
*for Echolink® mode terminal
operation.



■ **PS-5J**
Heavy Duty DC-Power
Supply (22.5A)



■ **KPS-15**
Switching DC-Power Supply



■ **SP-50B**
External Speaker



■ **DFK-3D**
Quick-Release Detachable Front Panel Kit*
*Includes quick-release panel, panel mount &
cushion, 9.963in panel cable.



■ **VGS-1**
Voice Guide & Storage Unit

Not all accessories are available in all markets. For availability, contact your nearest dealer.

Specifications

TM-V71A

GENERAL

Frequency Range Band A & B	TX	144 - 148 MHz 430 - 450 MHz
Frequency Range Band A	RX	118 - 524 MHz
Band B	RX	136 - 524 MHz 800 - 1300 MHz * (*excluding cellular band)
Mode		F2D, F3E
Antenna Impedance		50 Ω
Power Requirement		DC13.8V ±15% (minus)
Operating Temperature Range		-20° C ~ +60° C
Frequency Stability		Within ±5ppm (-10° C ~ +50° C)
Current Drain		
Transmit	VHF HI	Less than 13.0A
	MID	Less than 5.5A
	LOW	Less than 4.0A
	UHF HI	Less than 13.0A
	MID	Less than 6.5A
	LOW	Less than 5.0A
Receive		Less than 1.2A (at 2W audio output)
Dimensions (W x H x D)		
Without protrusions	Panel	5.51 x 1.69 x 1.50 inch (140 x 43 x 38.2 mm)
	Body w/Panel	5.51 x 1.69 x 7.11 inch (140 x 43 x 180.7 mm)
With protrusions	Panel	5.51 x 1.69 x 2.18 inch (140 x 43 x 55.4 mm)
	Body w/Panel	5.51 x 1.69 x 8.39 inch (140 x 43 x 213.1 mm)
Weight (approx.)	Body w/Panel	3.3 bs. (1.5 kg)

TRANSMITTER

RF Output Power		
HI	VHF/UHF	50W / 50W
MID	VHF/UHF	Approx. 10W / Approx. 10W
LOW	VHF/UHF	Approx. 5W / Approx. 5W
Modulation		Reactance Modulation
Maximum Frequency Deviation		Within ±5kHz
Spurious Radiation		Less than -60dB
Modulation Distortion (300Hz ~ 3kHz)		Less than 3%
Microphone Impedance		600 Ω

RECEIVER

Circuitry		Double Super Heterodyne
Intermediate Frequency		
1st IF (A Band/B Band)		45.05MHz / 49.95MHz
2nd IF (A Band/B Band)		455kHz / 450kHz
Sensitivity	VHF/UHF	Less than 0.16 μV
Squelch Sensitivity	VHF	Less than 0.1 μV
	UHF	Less than 0.1 μV
Selectivity	-6dB	More than 11kHz
	-50dB	Less than 30kHz
Audio Output (8 Ω)		More than 2W (at 5% distortion)

Kenwood reserves the right to change specifications and features without prior notice. These specifications are guaranteed for Amateur Bands only.

Echolink® is a registered trademark of Synergistics, LLC.

KENWOOD

Kenwood U.S.A. Corporation
Communications Sector Headquarters

3970 Johns Creek Court, Suite 100, Suwanee, GA 30024-1265

Order Administration/Distribution

P.O. BOX 22745, 2201 East Dominguez St., Long Beach, CA 90801-5745

Kenwood U.S.A. Corporation
Communications Sector Headquarters

3970 Johns Creek Court, Suite 100, Suwanee, GA 30024-1265



www.kenwoodusa.com



ISO9001 Registered
Communications Equipment Division
Kenwood Corporation
3970 Johns Creek Court

AD5812808 Printed in USA