

4.7.7 User Definitions (Level 2 MENU)

Both press **MENU** and **POWER** to access the following the level 2 menu.

MENU No.	Item	Function	Parameter	Default Setting
16	INITIAL	Initialize storage memory except for TX power data.		
17	MEM CLR	Initialize storage memory individually.	MD: ATU matching data CH: All user channels USR: User setting parameter TX BAND power data PWR: TX power data PA : NAH TX power data	
18	DATADISP	Display the meter function.	ANT: Antenna current SWR: PA(PA output of JSB) ATU(ATU input) PA: Vc, Ic (Collector voltage and current of JSB)	
19	LC CONT	Display the ATU matching data and change the matching parameter.		
20	ATU CHK	Check the ATU relay. (Visual check)		
21	ATU PASS	Initialize the ATU relay. (Matching through)	ON/OFF	OFF
22	ATU SPD	Change the ATU matching speed.	NRM: Normal speed SLW: Slow speed	NRM
23	AUTOTUNE	Perform continuous tuning for user channels par 1 Group.		
24	2182MODE	Select the 2182kHz emission mode.	TEL/AME (H3E)	TEL
25	10KEY	Disable the free-input frequency operation. (Only user channel operation)	ON/OFF	ON
26	TX DELAY	Set the transmission switchover delay to 70ms. (for BK Relay)	ON/OFF	OFF
27	RFTHROUGH	Disable the Variable tuning function.	ON/OFF	OFF
28	TESTTONE	Use the test-tone for TEL or LSB mode.	ON/OFF	OFF
29	MAX POWER	Set the output model for the rated transmitting power.		
30	LSB MODE	Enable the LSB mode operation.	ON/OFF	OFF
31	LSB TRX	Enable the LSB transmission.	TRX: Enable transmitting RX: Reception only	RX
32	AME TRX	Enable the AME (H3E) transmission.	TRX: Enable transmitting RX: Reception only	RX
33	CHECK2	Perform the self-diagnosis with check item.		
34	MIC GAIN	Change the MIC gain.	0.0 (-25.0dB) ~ 25.0 (0.0dB) ~ 50.0(+25.0dB)	
35	ADJ POWER	Change the output power for user registration channel.	0 (no power) ~ 255 (+3.0dB)	
36	SPEECH-P	Set the Speech-processor function.	ON/OFF	ON
37	KOREA	Change the operation and parameter for sale to KOREA.	ON/OFF	OFF
38	ATU TYPE	Select the ATU type.	NFC: NFC-196/296/896 OP1: For other tuner setting 1 OP2: For other tuner setting 2	NFC

39	PA CONT	Display the NAH Power Amplifier data.	AC/DC volt DC current (24Vdc current) PA in/out PA current PA (A) Vc/Ic PA (B) Vc/Ic PA (C) Vc/Ic PA SWR Arrester volt	
40	AC POWER	Display the Exciter level for every transmitting output in AC operation.		
41	BAND PWR	Set the TX power of frequency band.	AC: HI/MID/LOW DC: HI/LOW	

4.7.8 Set up of the MENU items

○ : Enable setting.

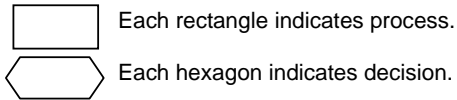
× : Disable setting.

Comment : Enable setting only when the following conditions.

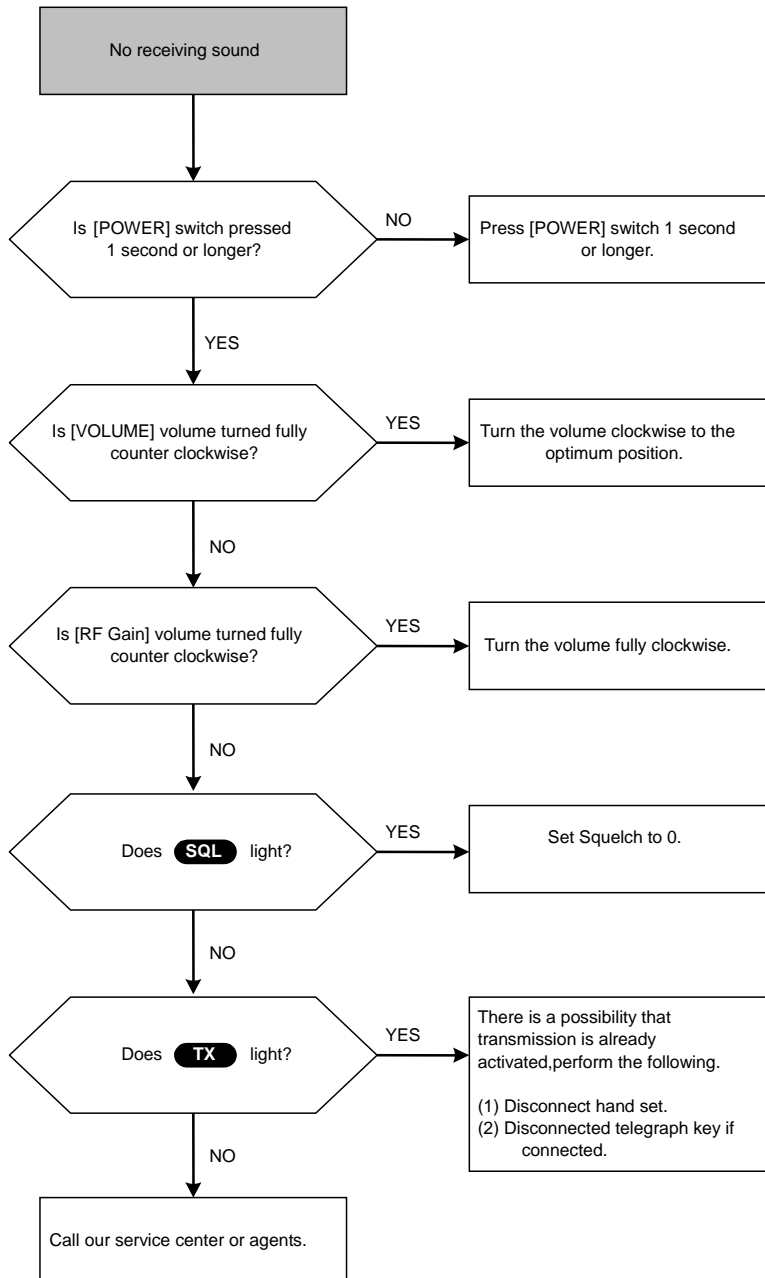
MENU No.	Item	Standard	No connect the Antenna Tuner	10KEY OFF	KOREA ON
1	MODE	○	○	×	TEL/DSC mode
2	POWER	○	○	○	○
3	AGC	○	○	○	○
4	SQL	○	○	○	○
5	SCAN	○	○	○	×
6	SCAN SPD	○	○	○	×
7	USR MEMO	○	○	×	×
8	GRP MEMO	○	○	×	×
9	METER	○	×	○	○
10	ATS	○	×	○	○
11	ATS WAIT	○	×	○	○
12	BEEP	○	○	○	○
13	SPEAKER	○	○	○	○
14	CHECK	○	○	○	○
15	VERSION	○	○	○	○
16	INITIAL	○	○	○	○
17	MEM CLR	○	○	○	○
18	DATADISP	○	○	○	○
19	LC CONT	○	×	○	○
20	ATU CHK	○	×	○	○
21	ATU PASS	○	×	○	○
22	ATU SPD	○	×	○	○
23	AUTOTUNE	○	×	○	×
24	2182MODE	×	×	×	×
25	10KEY	○	○	○	×
26	TX DELAY	○	○	○	○
27	RFTHROUGH	○	○	○	○
28	TESTTONE	TEL/LSB mode	TEL/LSB mode	TEL/LSB mode	TEL mode
29	MAX POWER	HI power	HI power	HI power	HI power
30	LSB MODE	○	○	○	×
31	LSB TRX	LSB MODE on	LSB MODE on	LSB MODE on	×
32	AME TRX	○	○	○	×
33	CHECK2	○	○	○	○
34	MIC GAIN	○	○	○	○
35	ADJ POWER	Select the User channel operation.	Select the User channel operation.	Select the User channel operation.	×
36	SPEECH-P	○	○	○	○
37	KOREA	TEL mode	TEL mode	TEL mode	○
38	ATU TYPE	×	×	×	×
39	PA CONT	○	○	○	○
40	AC POWER	○	○	○	○
41	BAND PWR	○	○	○	○

5. TROUBLESHOOTING

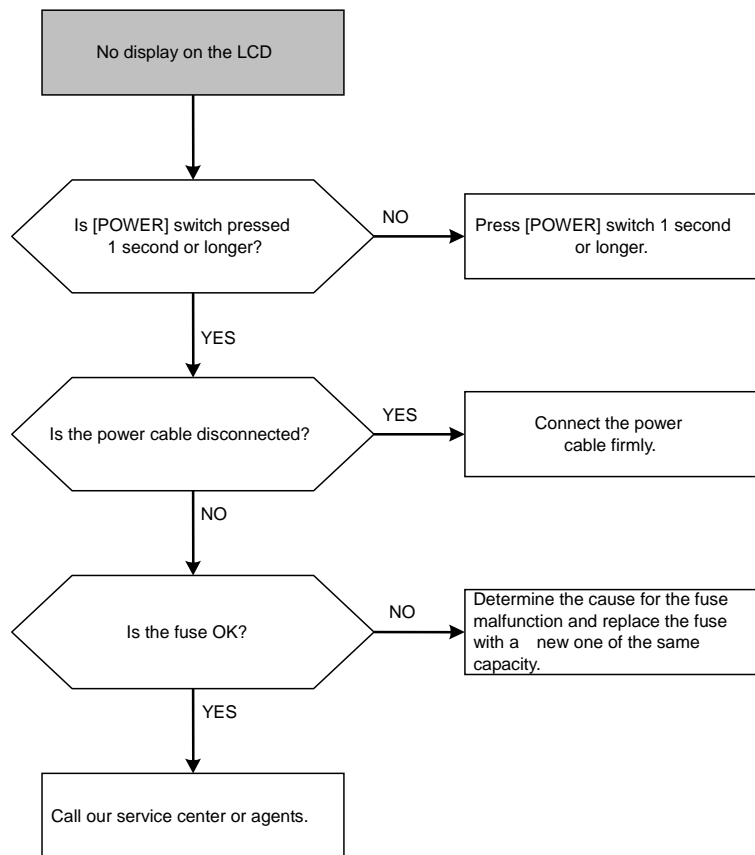
5.1 JSB-196GM



(1) No receiving sound



(2) No display on the LCD



5.2 NCT-196N

(1) No response from keys

