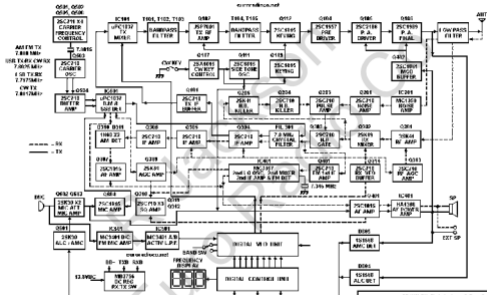


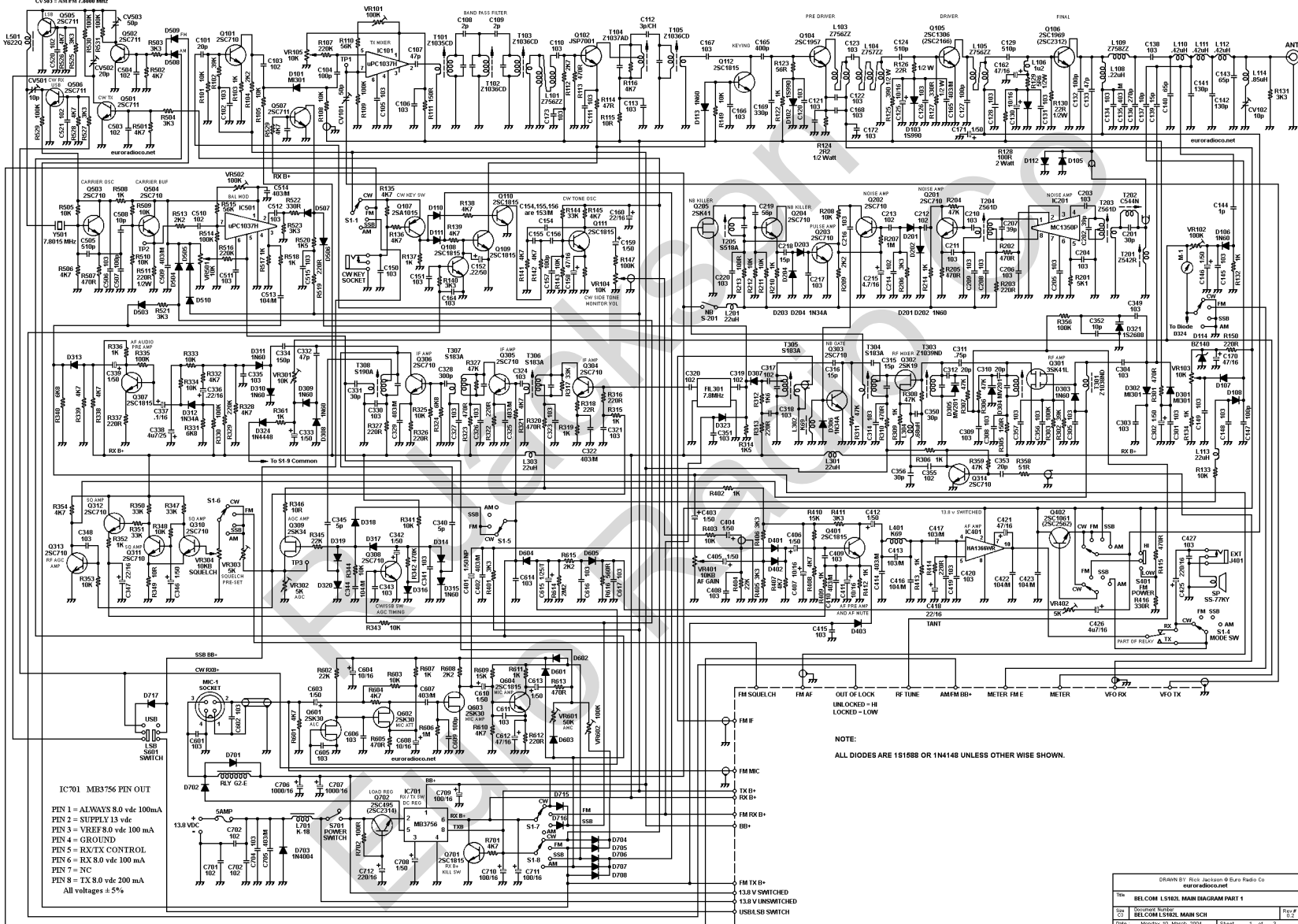
BELCOM LS102L BLOCK DIAGRAM



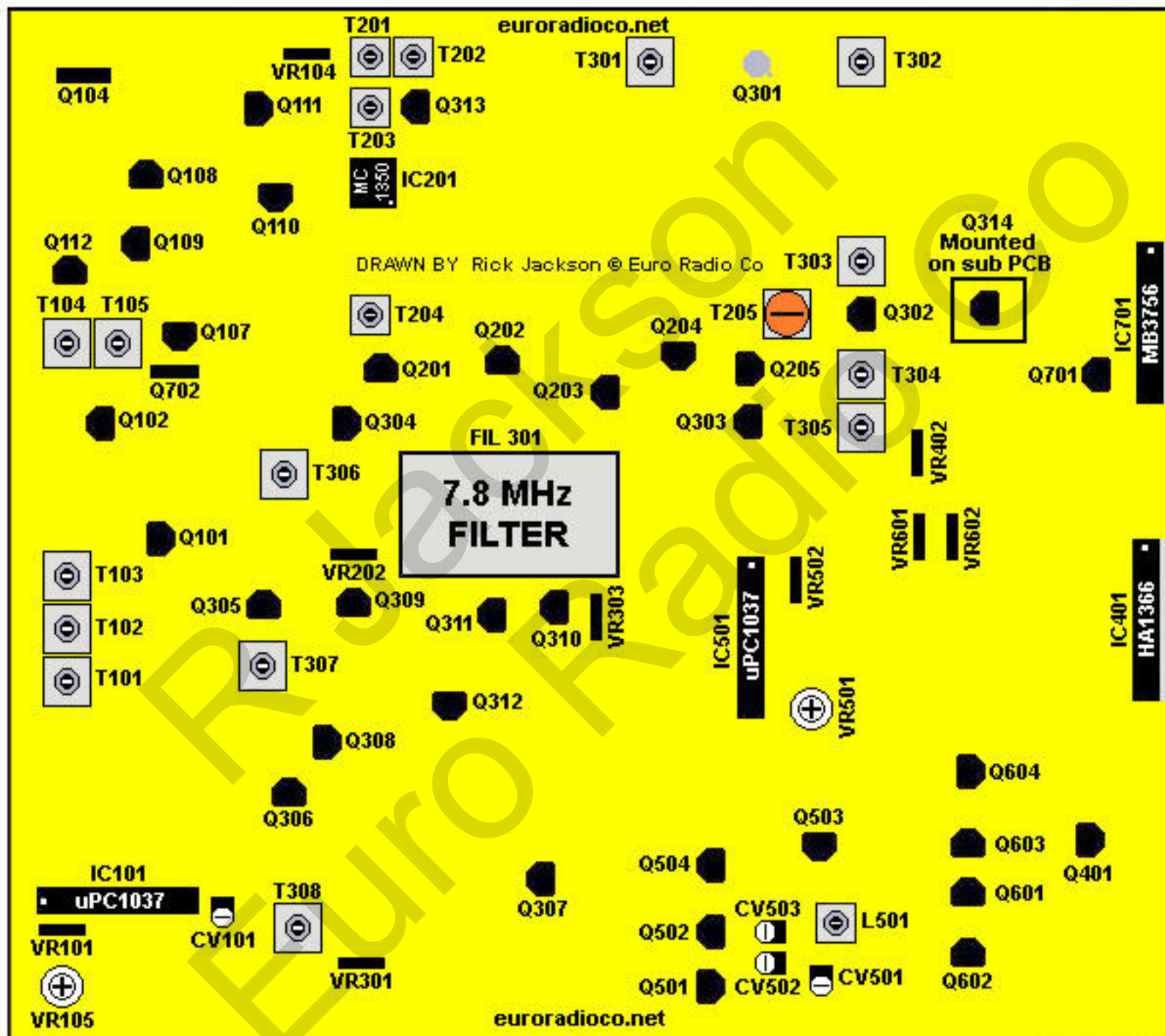
DESIGN BY: Bob Anderson & Paul Miller for entradisound		
Title: BELCOM LS102L BLOCK DIAGRAM PART 3		
Doc No:	Doc/Rev Number:	Rev/Of:
102	BELCOM LS102L BLOCK DIAGRAM	01/01
Date:	Monday, 10 October, 2004	Sheet 3 of 3

BELCOM LS102L SCHEMATIC DIAGRAM

CARRIER OFF-SET AT TP2 (Emitter 0596)
 L581 = L50 17.975 MHz
 CV581 = US0 AND CW IN RX 7.8025 MHz
 CV582 = CW IN TX 7.8017 MHz
 CV583 = AM FM 7.800 MHz

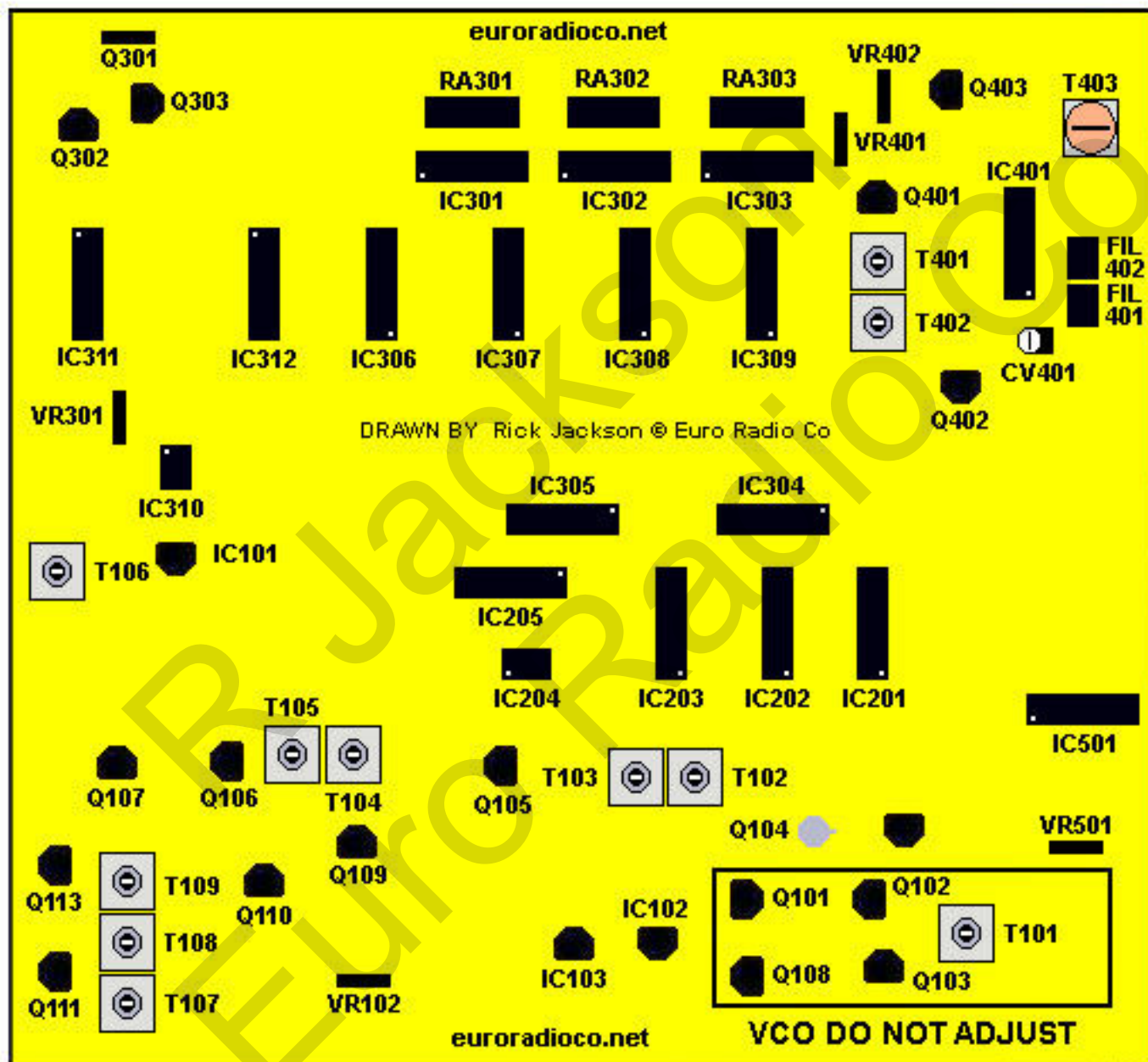


BELCOM LS102L MAIN PCB LAYOUT



FRONT OF RADIO

BELCOM LS102L VFO PCB LAYOUT



FRONT OF RADIO