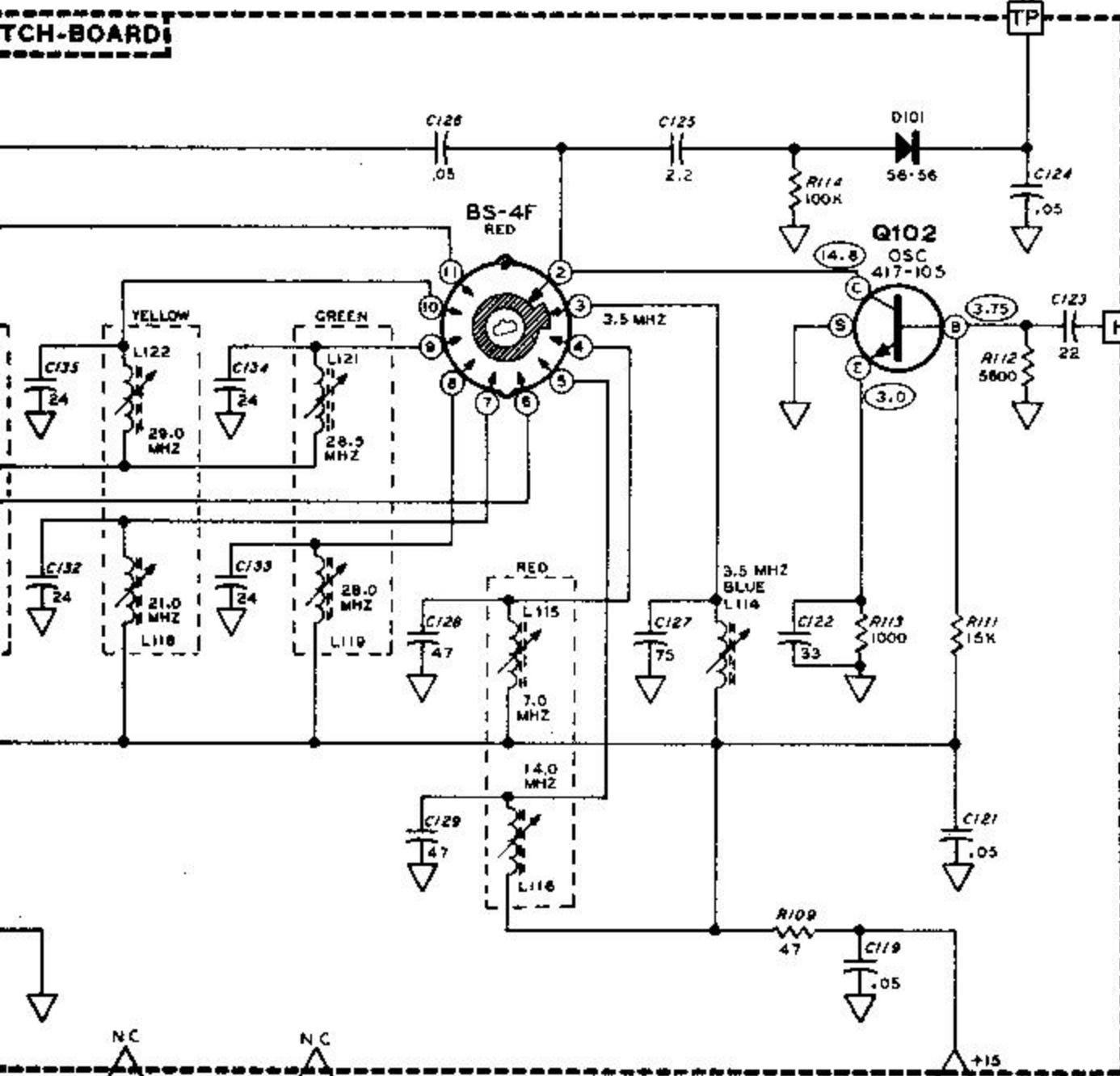
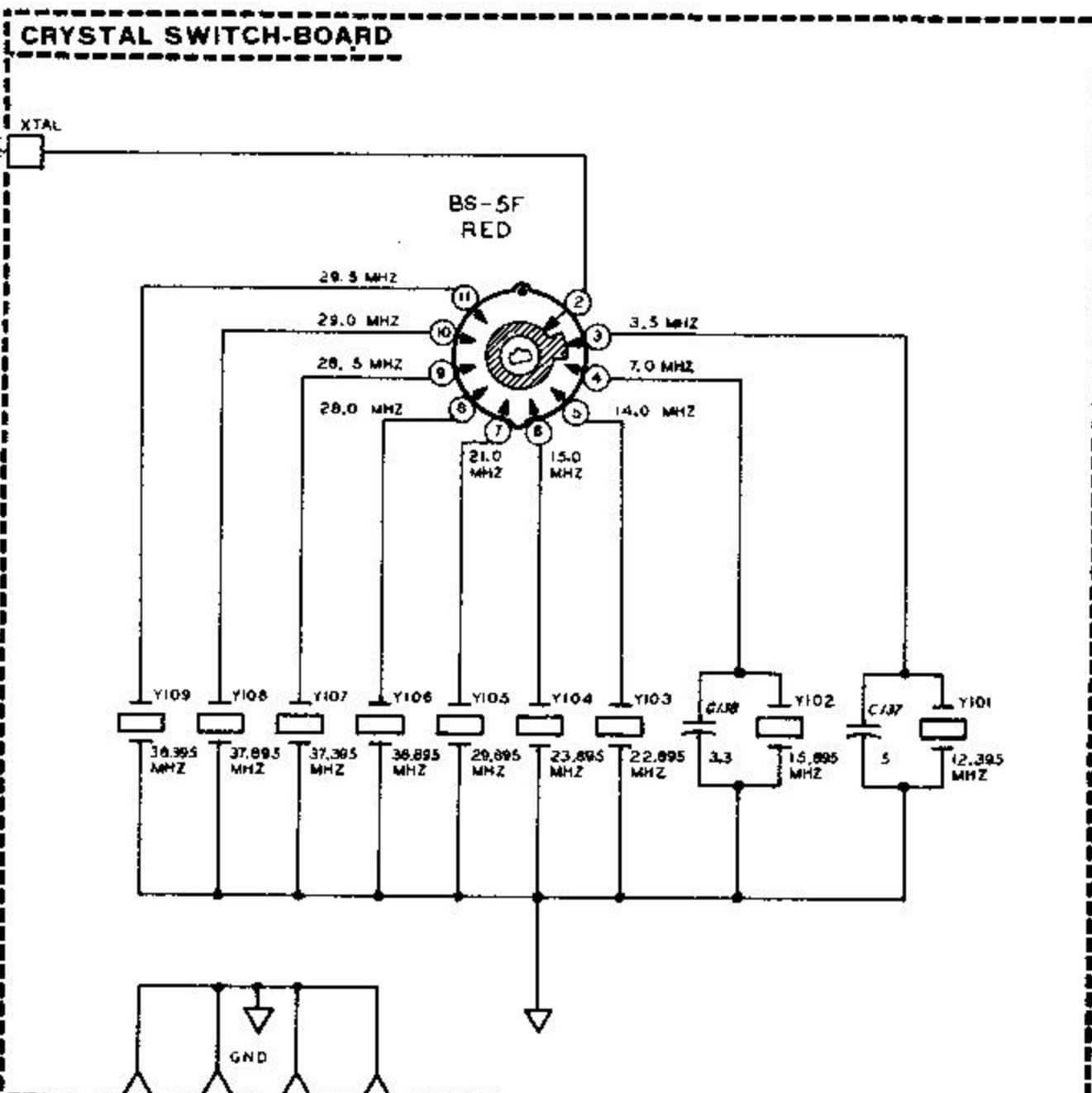




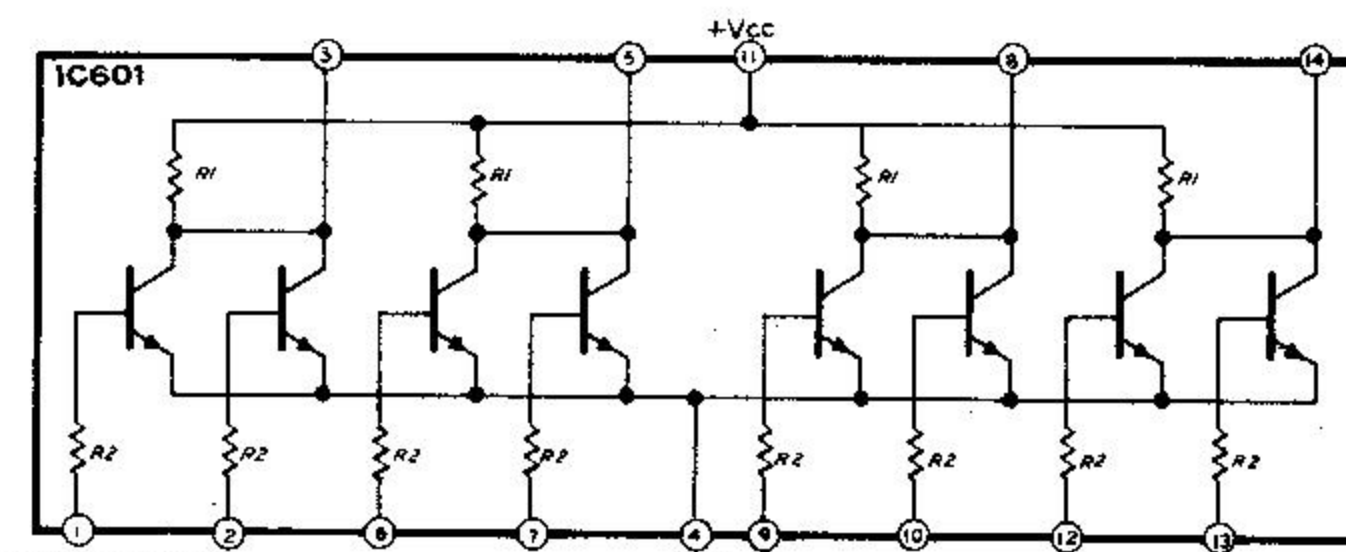
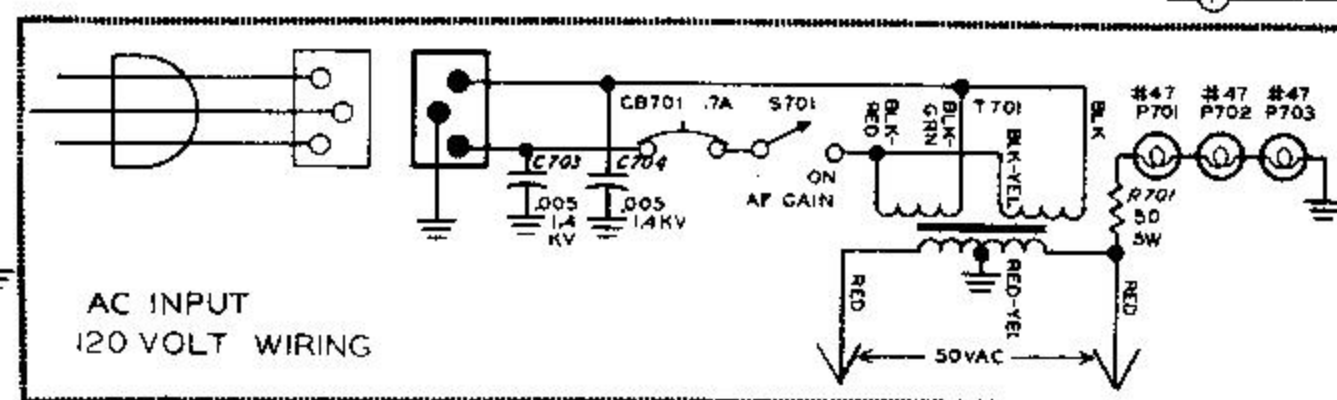
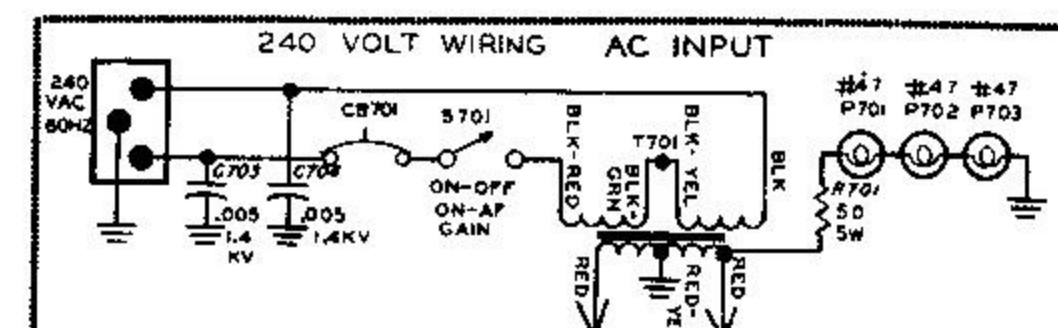
TCH-BOARD



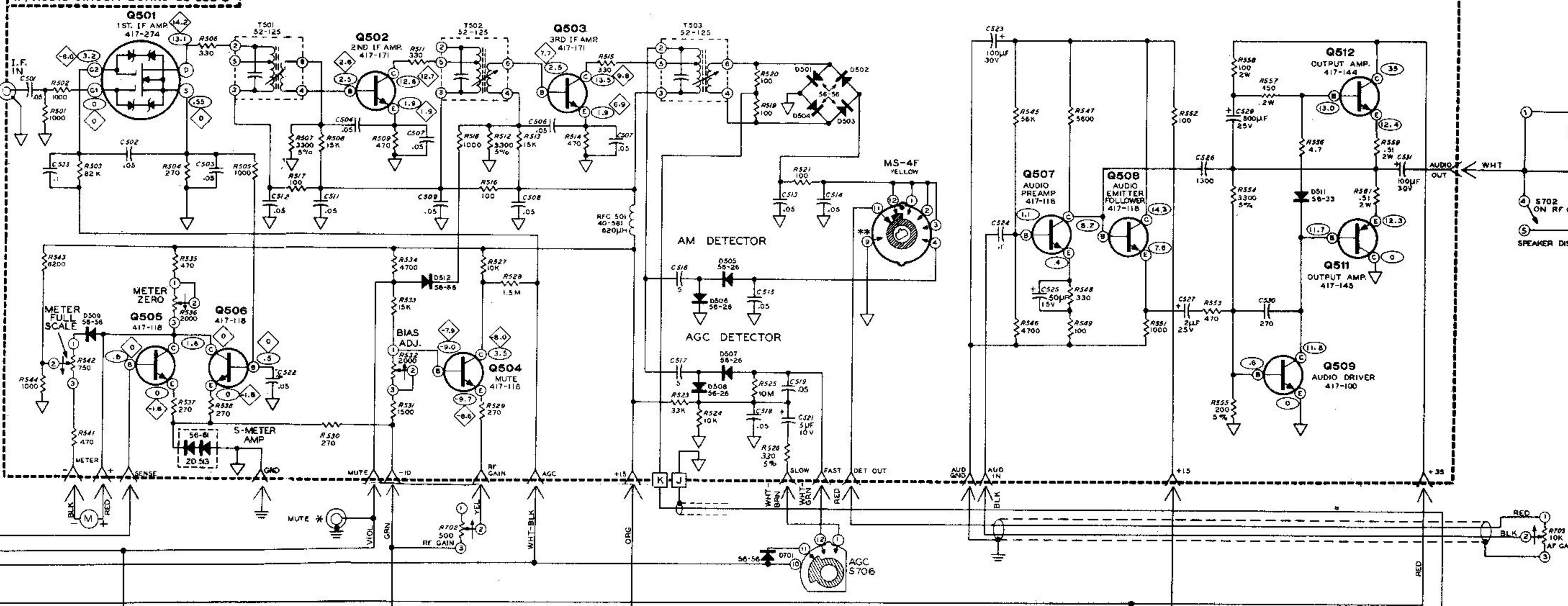
CRYSTAL SWITCH-BOARD



SCHEMATIC OF THE HEATHKIT® SOLID-STATE SSB RECEIVER MODEL SB-303

R1=540 OHMS
R2=430 OHMSAC INPUT
120 VOLT WIRINGTO AC CONNECTORS ON
PS/BFO CIRCUIT BOARDTO AC CONNECTORS ON
PS/BFO CIRCUIT BOARD

IF/AUDIO CIRCUIT BOARD BS-353-3

PHONES
ANTI VOX
SPEAKER
SPEAKER DISABLEBLACK
S-2F

WHT-BLK

BLK

WHT-BLK

BLK

WHT-BLK

BLK

WHT-BLK

BLK

WHT-BLK

BLK

WHT-BLK

BLK

WHT-BLK

BLK

WHT-BLK

BLK

WHT-BLK

BLK

WHT-BLK

BLK

WHT-BLK

BLK

WHT-BLK

BLK

WHT-BLK

BLK

WHT-BLK

BLK

WHT-BLK

BLK

WHT-BLK

BLK

WHT-BLK

BLK

WHT-BLK

BLK

WHT-BLK

BLK

WHT-BLK

BLK

WHT-BLK

BLK

WHT-BLK

BLK

WHT-BLK

BLK

WHT-BLK

BLK

WHT-BLK

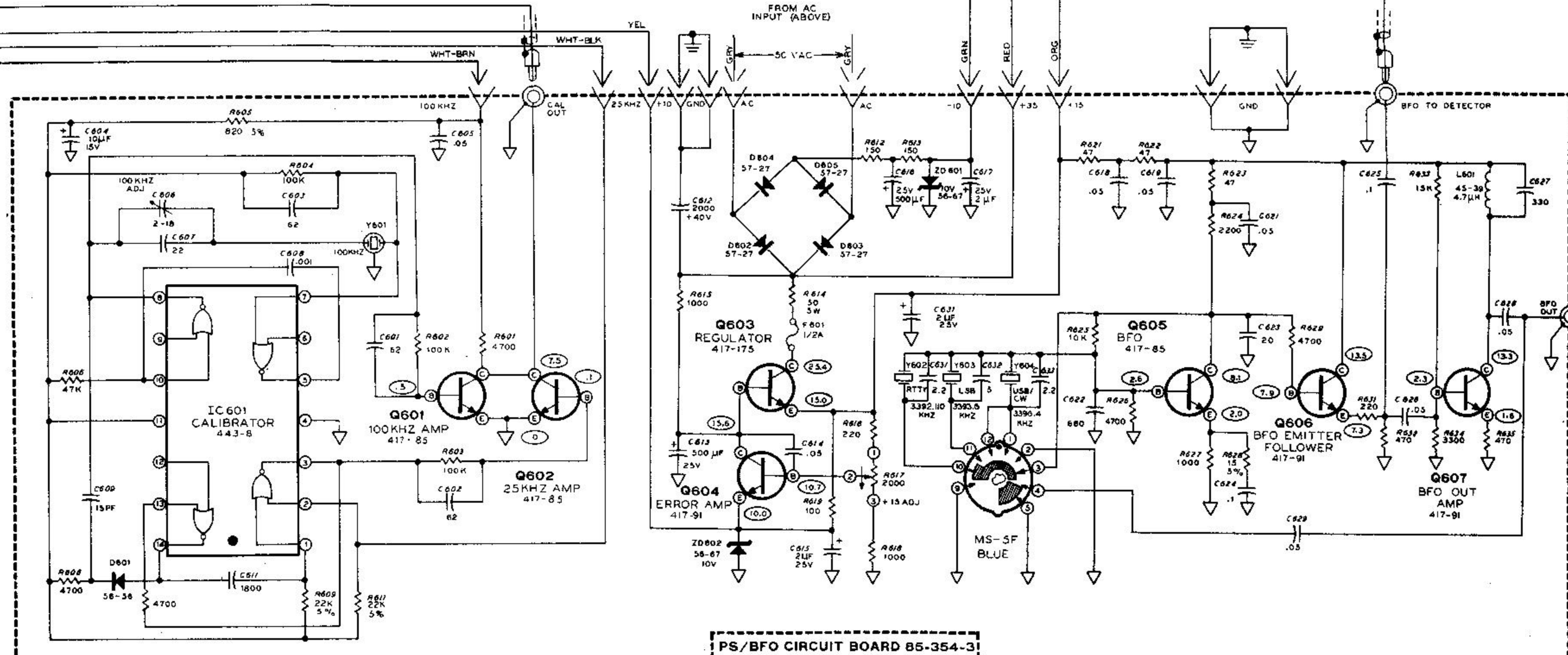
BLK

WHT-BLK

BLK

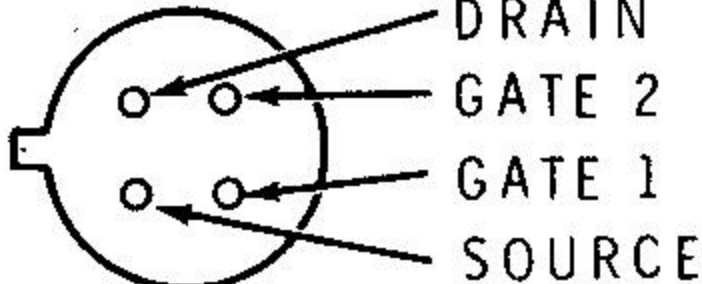

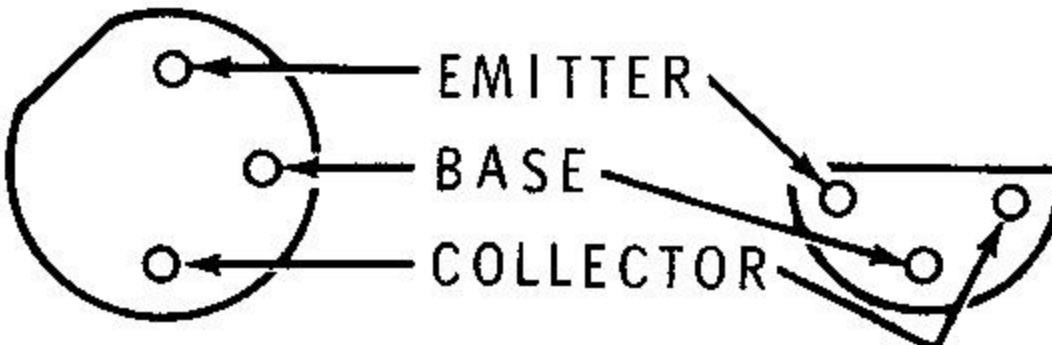

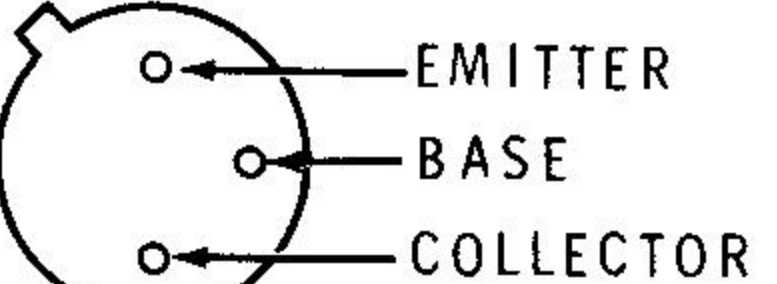
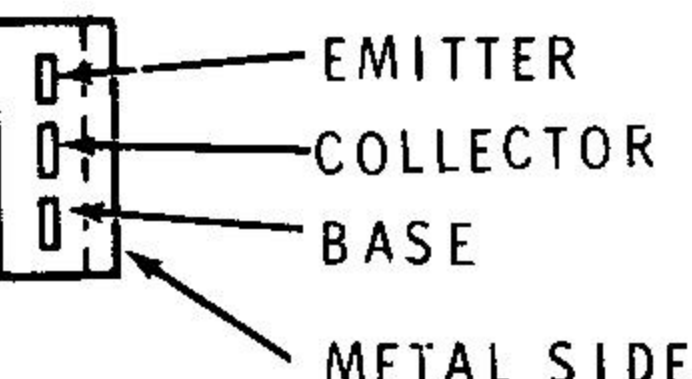
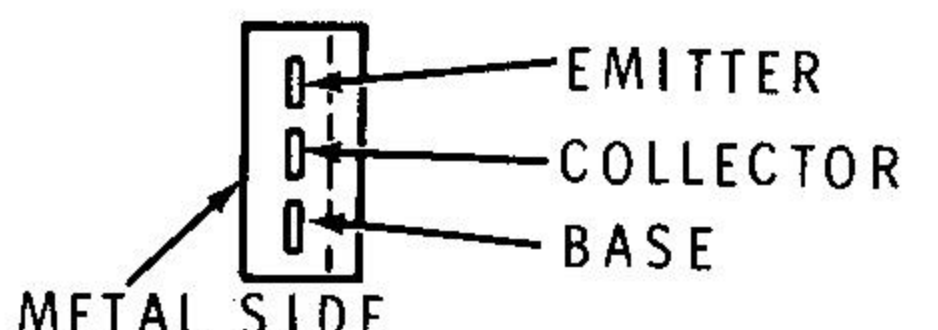
WHT-BLK

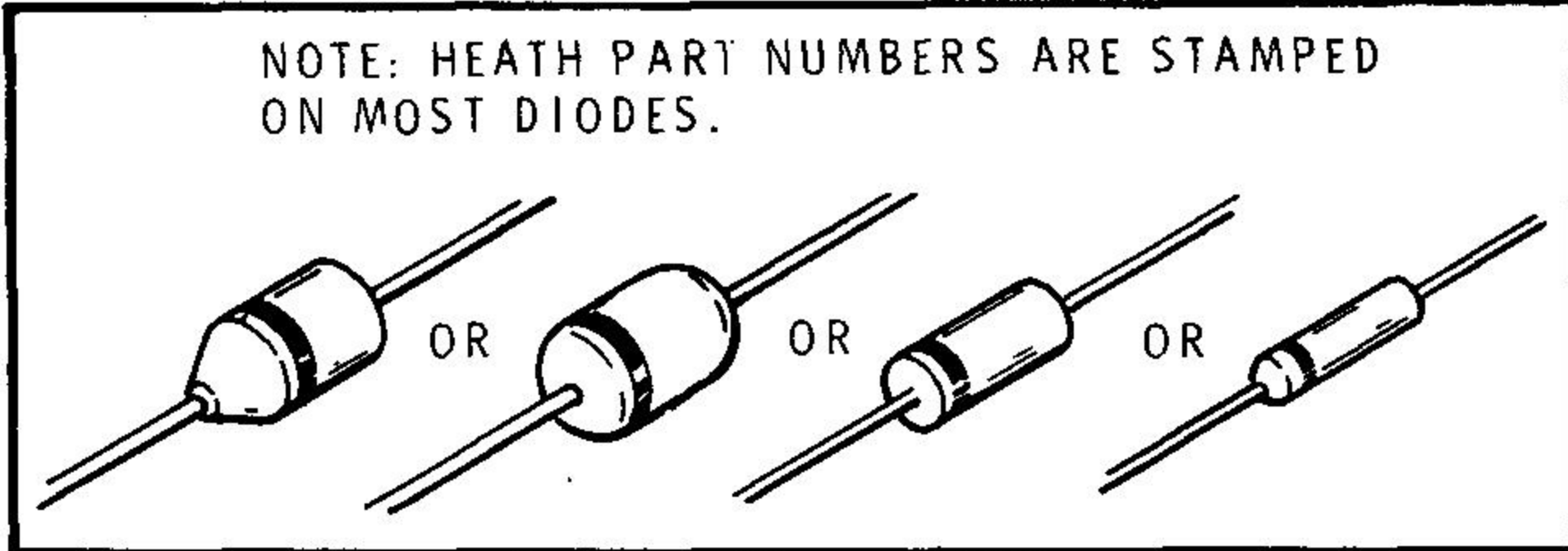
OTHERWISE SPECIFIED.
ARE IN PF UNLESS OTHERWISE SPECIFIED.
IF.
CLOCKWISE POSITION.
MS-2F, AND MS-2R INDICATES A
FRONT ROTOR.
ROTATION OF CONTROLS AS VIEWED FROM
FRONT.



PS/BFO CIRCUIT BOARD BS-354-3

BASING DIAGRAMS

COMPONENT	HEATH PART NUMBER	MAY BE REPLACED WITH	BASE DIAGRAM (BOTTOM VIEW)
Q101, Q203, Q204, Q501	417-274	RCA 40673	
Q102	417-105	FAIRCHILD SE-5023	
Q201, Q202, Q502, Q503	417-171	FAIRCHILD 2N3694	
Q301, Q302, Q303, Q504, Q505, Q506, Q507, Q508	417-118	G. E. OR T. I. 2N3393	
Q604 Q606 Q607	417-91	G. E. OR T. I. 2N5232A	
Q601, Q602, Q605	417-85	G. E. E844	
Q509	417-100	RCA 2N3053	
Q603	417-175	RCA OR T. I. 2N5294	
Q511	417-145	MOT. MJE-371	
MOTOROLA MATCHED PAIR Q512	417-144	MOT. MJE-512	

COMPONENT	HEATH PART NUMBER	MAY BE REPLACED WITH	BASE DIAGRAM (BOTTOM VIEW)
D101, D201 D202, D501 D502, D503 D504, D509 D512, D601 D701	56-56	1N4149	<div>Downloaded by RadioManual.EU</div> <div> <p>NOTE: HEATH PART NUMBERS ARE STAMPED ON MOST DIODES.</p>  </div>
D505, D506 D507, D508	56-26-1	1N191	
D511	56-33	1N3754	
D602, D603, D604, D605	57-27	1N2071	
D513	56-61	G.E. STB-620	
ZD601, ZD602, ZD301	56-67	VR-10A	
IC601	443-8	MOT. MC724P	