



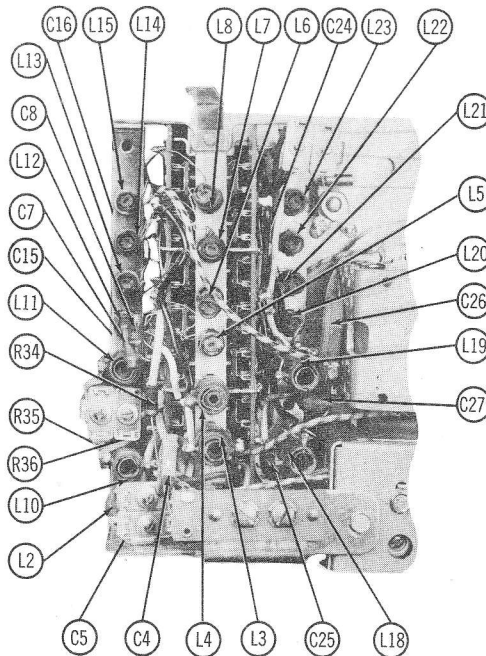
ZENITH MODEL L600 (Ch. 6L40)



VOLUME CONTROL ON-OFF SWITCH TONE SWITCH TUNING CONTROL

TRADE NAME	Zenith Model L600 (Ch. 6L40)		
MANUFACTURER	Zenith Radio Corp., 6001 Dickens Ave., Chicago, Ill.		
TYPE SET	Three Power Portable Multi-Band Superheterodyne Receiver		
TUBES (Five)	Types 1U4 RF Amp., 1L6 Conv., 1U4 IF Amp., 1U5 Det.-AVC-AF Amp., 3V4 Audio Output		
POWER SUPPLY	110-120 Volts AC-DC (or) 9 Volts "A" Supply & 90 Volts "B" Supply In Pack Form		
RATING	.13 Amp. @ 117 Volts AC (or) 75MA @ 9 Volts DC & 21MA @ 90 Volts DC		
TUNING RANGE	Band #1 (540-1600KC)	Band #4 (17.4-18.2MC)	Band #7 (9.4-9.8MC)
	Band #2 (4-8MC)	Band #5 (14.8-15.6MC)	
	Band #3 (2-4MC)	Band #6 (11.5-12.1MC)	

ZENITH MODEL L600 (Ch. 6L40)



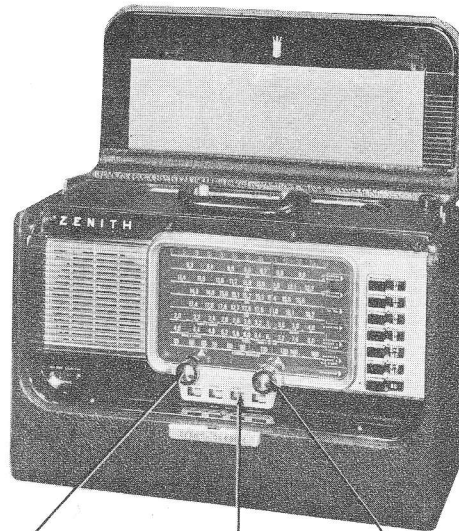
HOWARD W. SAMS & CO., INC. • Indianapolis 5, Indiana

"The listing of any available replacement part herein does not constitute in any case a recommendation, warranty or guaranty by Howard W. Sams & Co., Inc., as to the quality and suitability of such replacement part. The numbers of these parts have been compiled from information furnished to Howard W. Sams & Co., Inc., by the manufacturers of the particular type of replacement part listed."
 "Reproduction or use, without express permission, of editorial or pictorial con-

tent, in any manner, is prohibited. No patent liability is assumed with respect to the use of the information contained herein. Copyright 1954 by Howard W. Sams & Co., Inc., Indianapolis 5, Indiana, U. S. of America. Copyright under International Copyright Union. All rights reserved under Inter-American Copyright Union (1910) by Howard W. Sams & Co., Inc." Printed in U. S. of America



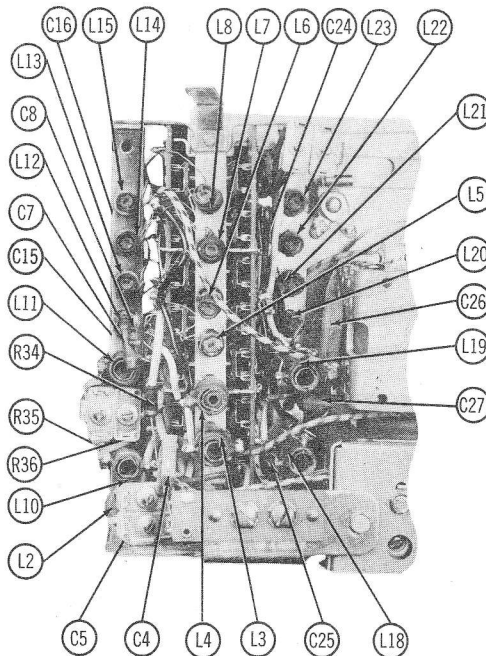
ZENITH MODEL L600 (Ch. 6L40)



VOLUME CONTROL ON-OFF SWITCH TONE SWITCH TUNING CONTROL

TRADE NAME	Zenith Model L600 (Ch. 6L40)		
MANUFACTURER	Zenith Radio Corp., 6001 Dickens Ave., Chicago, Ill.		
TYPE SET	Three Power Portable Multi-Band Superheterodyne Receiver		
TUBES (Five)	Types 1U4 RF Amp., 1L6 Conv., 1U4 IF Amp., 1U5 Det.-AVC-AF Amp., 3V4 Audio Output		
POWER SUPPLY	110-120 Volts AC-DC (or) 9 Volts "A" Supply & 90 Volts "B" Supply In Pack Form		
RATING	.13 Amp. @ 117 Volts AC (or) 75MA @ 9 Volts DC & 21MA @ 90 Volts DC		
TUNING RANGE	Band #1 (540-1600KC)	Band #4 (17.4-18.2MC)	Band #7 (9.4-9.8MC)
	Band #2 (4-8MC)	Band #5 (14.8-15.6MC)	
	Band #3 (2-4MC)	Band #6 (11.5-12.1MC)	

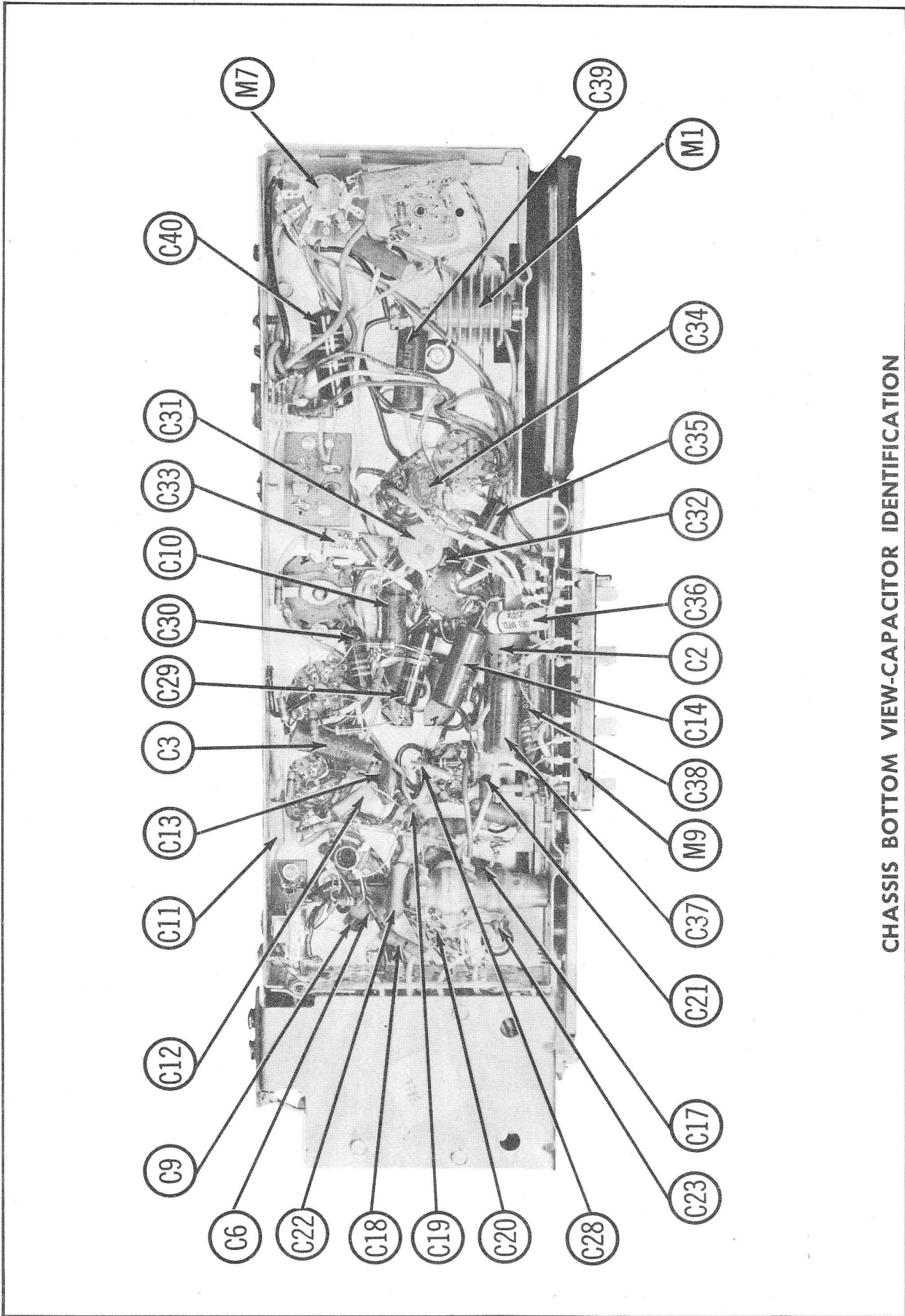
ZENITH MODEL L600 (Ch. 6L40)



HOWARD W. SAMS & CO., INC. • Indianapolis 5, Indiana

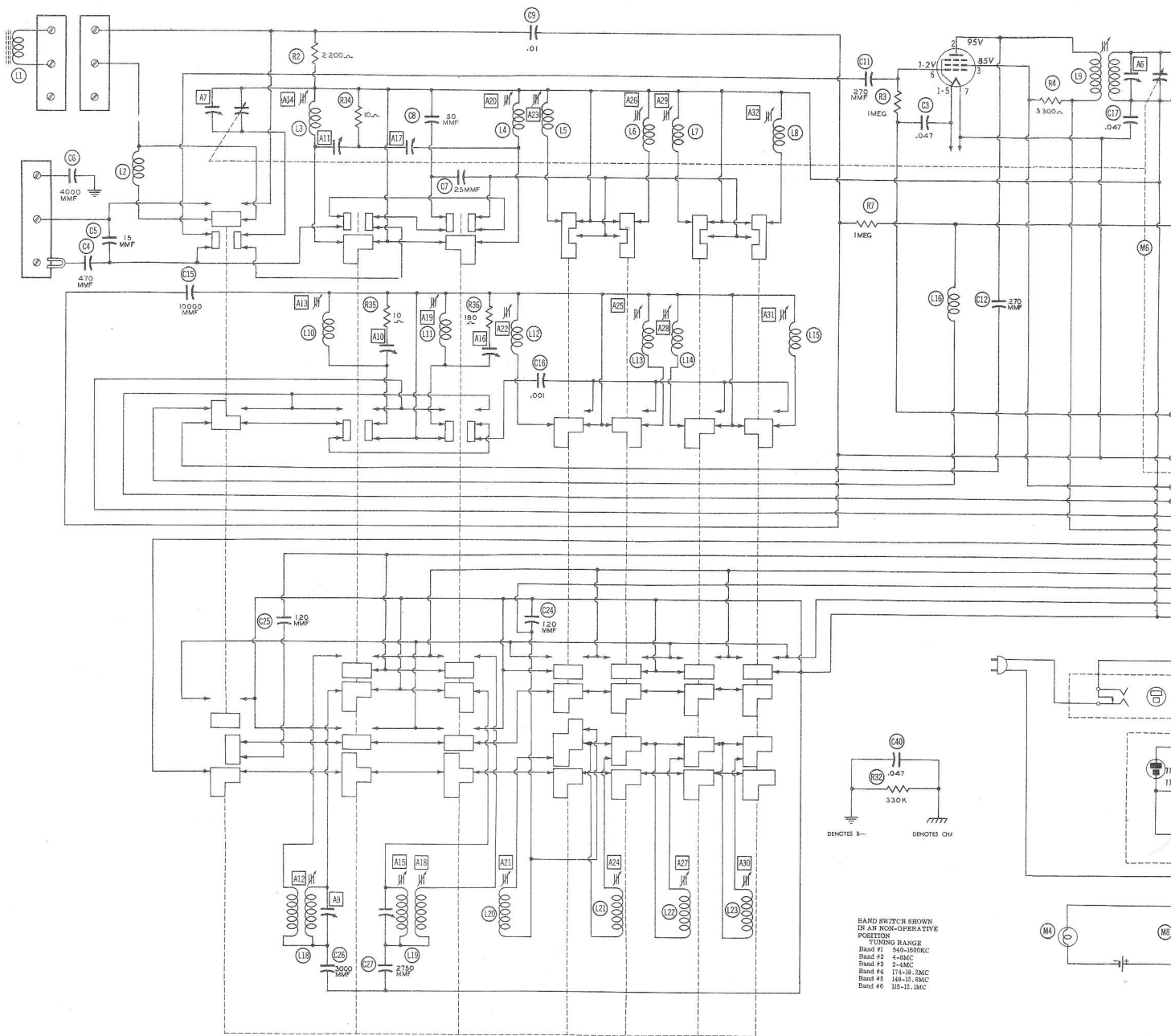
"The listing of any available replacement part herein does not constitute in any case a recommendation, warranty or guaranty by Howard W. Sams & Co., Inc., as to the quality and suitability of such replacement part. The numbers of these parts have been compiled from information furnished to Howard W. Sams & Co., Inc., by the manufacturers of the particular type of replacement part listed."
"Reproduction or use, without express permission, of editorial or pictorial con-

tent, in any manner, is prohibited. No patent liability is assumed with respect to the use of the information contained herein. Copyright 1954 by Howard W. Sams & Co., Inc., Indianapolis 5, Indiana, U. S. of America. Copyright under International Copyright Union. All rights reserved under Inter-American Copyright Union (1910) by Howard W. Sams & Co., Inc." Printed in U. S. of America



CHASSIS BOTTOM VIEW-CAPACITOR IDENTIFICATION

RF AMP
 1U4



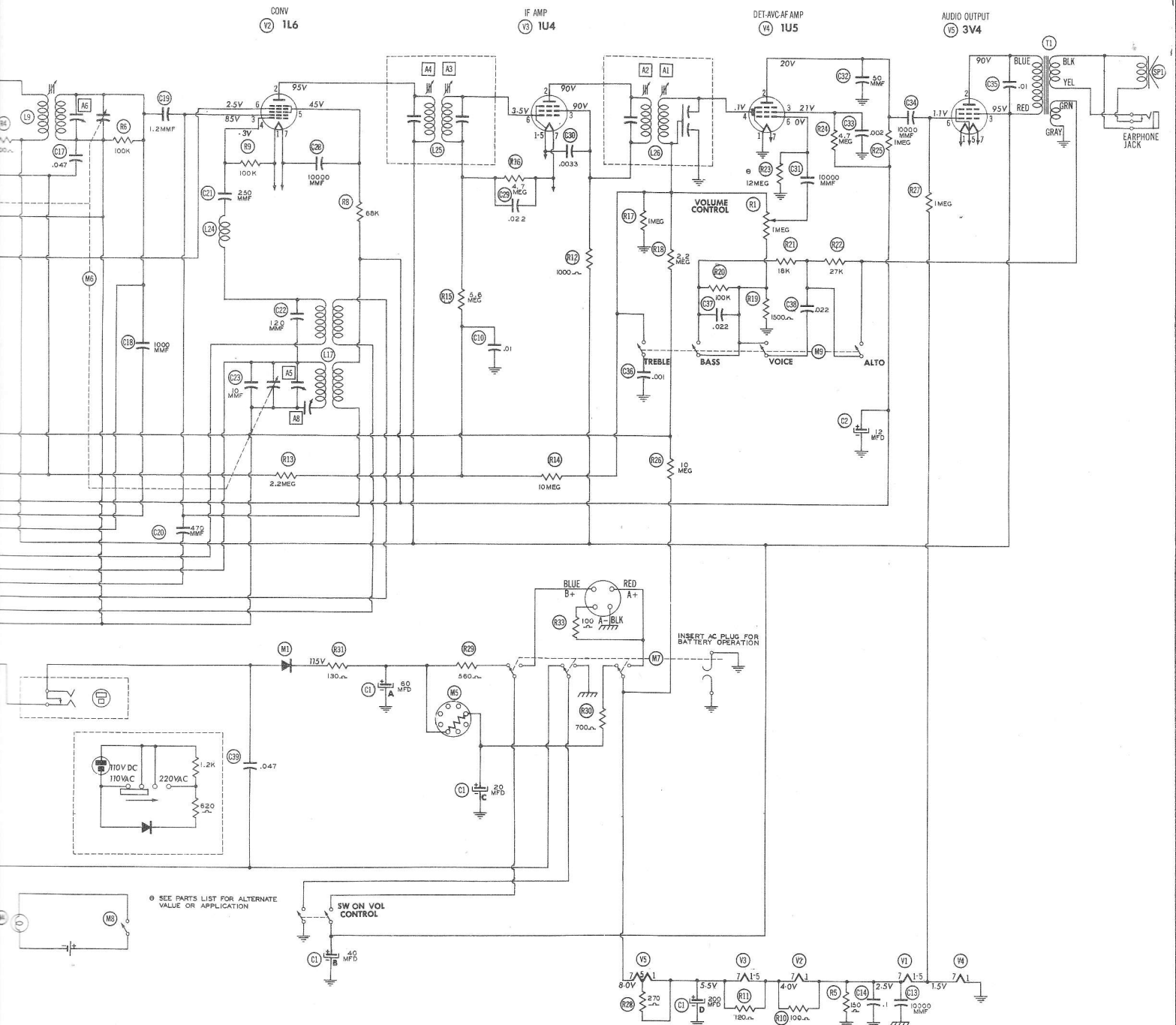
IF = 455KC

1. DC voltage measurements taken with vacuum tube voltmeter; AC voltages measured at 1000 ohms per volt.
2. Socket connections are shown as bottom views.
3. Measured values are from socket pin to common negative.
4. Line voltage maintained at 117 volts for voltage readings.
5. Nominal tolerance on component values makes possible a variation of ± 1% in voltage and resistance readings.
6. Voltage correct at maximum, no signal applied for voltage measurements.

RESISTANCE READINGS

Item	Tube	Pin 1	Pin 2	Pin 3	Pin 4
V 1	1U4	*	†700Ω	†4KΩ	3.2Meg
V 2	1L6	*	†700Ω	†4KΩ	100KΩ
V 3	1U4	*	†1.7KΩ	†1.7KΩ	150Ω
V 4	1U5	0Ω	†1Meg	†4.7Meg	1Meg
V 5	3V4	*	†1KΩ	†700Ω	3.2Meg

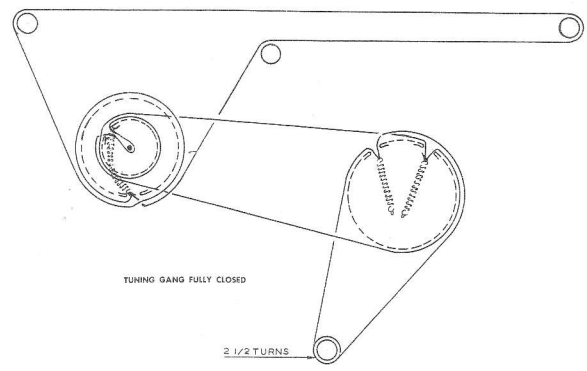
* DO NOT USED OHMMETER TO MEASURE FILAMENT
 † MEASURED FROM OUTPUT OF M1



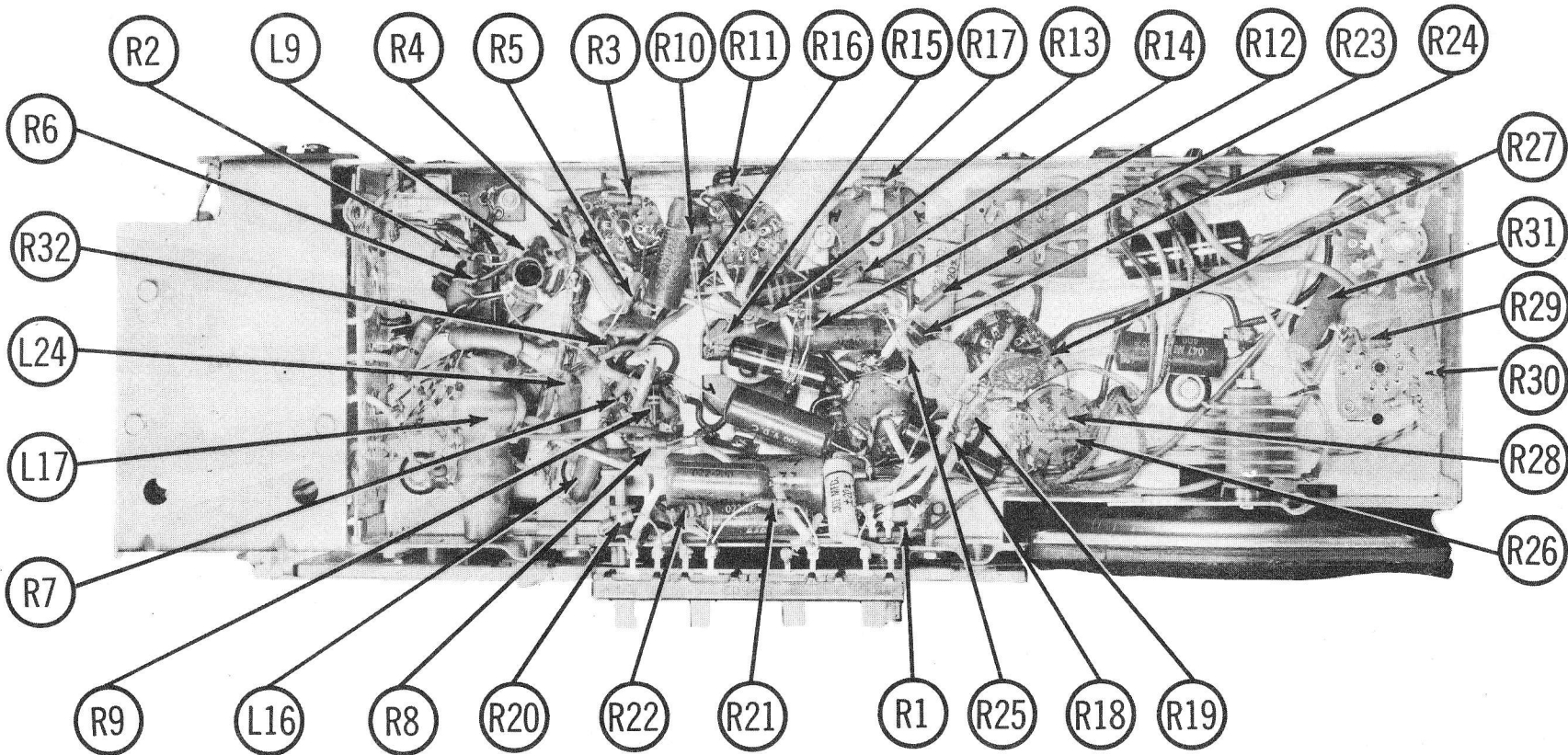
RESISTANCE READINGS

Pin 3	Pin 4	Pin 5	Pin 6	Pin 7
100KΩ	3.2Meg	*	4.2Meg	*
100KΩ	100KΩ	†72KΩ	4.2Meg	*
100KΩ	150Ω	*	2.5Meg	*
100KΩ	1Meg	INF	12Meg	*
100Ω	3.2Meg	*	1Meg	*

MEASURE FILAMENT RESISTANCE
M1



DRIVE CORD STRINGING



CHASSIS BOTTOM VIEW-RESISTOR IDENTIFICATION

ZENITH
 MODEL L600 (Ch. 6L40)

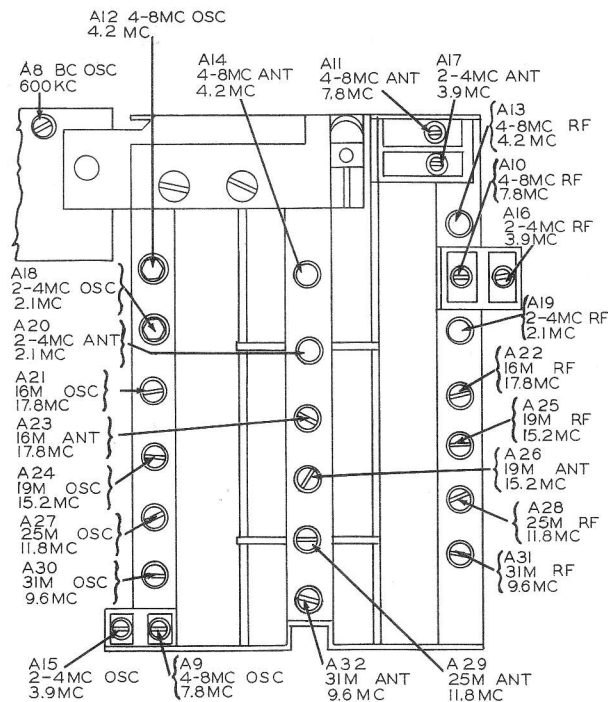
ALIGNMENT INSTRUCTIONS

ALIGNMENT INSTRUCTIONS—READ CAREFULLY BEFORE ATTEMPTING ALIGNMENT

During alignment the chassis should be placed over a metal plate approximately the same distance that the battery pack would be from the bottom of the chassis when the chassis is in the cabinet.
 Zenith alignment wrench #68-19, or equivalent, should be used to adjust the IF transformer cores.
 With tuning gang fully closed set the dial pointer to "0" on the logging scale (top dial scale).
 Volume control should be at maximum position. Output of signal generator should be no higher than necessary to obtain an output reading. Use an insulated alignment screwdriver for adjusting.
 Use battery power, if possible. If AC power is used, use an isolation transformer when available. If not, connect a .1MFD capacitor in series with low side of the signal generator and B-.

DUMMY ANTENNA	SIGNAL GENERATOR COUPLING	SIGNAL GENERATOR FREQUENCY	BAND SWITCH POS.	RADIO DIAL SETTING	OUTPUT METER	ADJUST	REMARKS
.1MFD	High side to pin 6 (grid) of 1L6 (V2). Low side to pin 1 (negative side of filament).	455KC (400vMod)	Broad-cast	600KC	Across voice coil	A1, A2, A3, A4	Adjust for maximum output. If AC power is used without an isolation transformer, reduce dummy antenna to 200MMF to reduce hum modulation.
	Loop	1600KC	"	1600KC	"	A5	Fashion loop of several turns of wire and radiate signal into loop of receiver. Adjust for maximum output.
	"	1400KC	"	1400KC	"	A6, A7	"
	"	600KC	"	600KC	"	A8	Adjust for maximum output while rocking tuning gang thru 600KC signal.
	High side to 3 foot length of wire placed one foot from extended wave rod.	7.8MC (400vMod)	4-8MC	7.8MC	"	A9, A10, A11	Adjust for maximum deflection.
	"	4.2MC	"	4.2MC	"	A12	Adjust for maximum output while rocking tuning gang thru 4.2MC signal.
	"	"	"	"	"	A13, A14	Adjust for maximum output. Repeat steps 6 and 7.
	"	3.9MC	2-4MC	3.9MC	"	A15, A16, A17	Adjust for maximum output.
	"	2.1MC	"	2.1MC	"	A18	Adjust for maximum output while rocking tuning gang thru 2.1MC signal.
	"	"	"	"	"	A19, A20	Adjust for maximum output. Repeat steps 9 and 10.
	High side to 3 foot length of wire placed one foot from extended whip ant.	17.8MC (400vMod)	16 meters	17.8MC	Across voice coil	A21, A22, A23	Adjust for maximum output while rocking tuning gang thru 17.8MC signal.
	"	15.2MC	19 meters	15.2MC	"	A24, A25, A26	Adjust for maximum output while rocking tuning gang thru 15.2MC signal.
	"	11.8MC	25 meters	11.8MC	"	A27, A28, A29	Adjust for maximum output while rocking tuning gang thru 11.8MC signal.
	"	9.6MC	31 meters	9.6MC	"	A30, A31, A32	Adjust for maximum output while rocking tuning gang thru 9.6MC signal.

NOTE: After reinstalling chassis in cabinet, switch to the broadcast band and tune in a weak station near 1400KC and retouch A7 for maximum volume.



ALIGNMENT POINTS

PARTS LIST AND DESCRIPTIONS

TUBES (SYLVANIA, GENERAL ELECTRIC, WESTINGHOUSE)

ITEM No.	USE	REPLACEMENT DATA		RETMA BASE TYPE	NOTES
		ZENITH PART No.	STANDARD REPLACEMENT		
V1	RF Amplifier	1U4	1U4	6AR	
V2	Converter	1L6	1L6	7DC	
V3	IF Amplifier	1U4	1U4	6AR	
V4	Det-AVC AF Amp.	1U5	1U5	6BW	
V5	Audio Output	3V4	3V4	6BX	

CAPACITORS

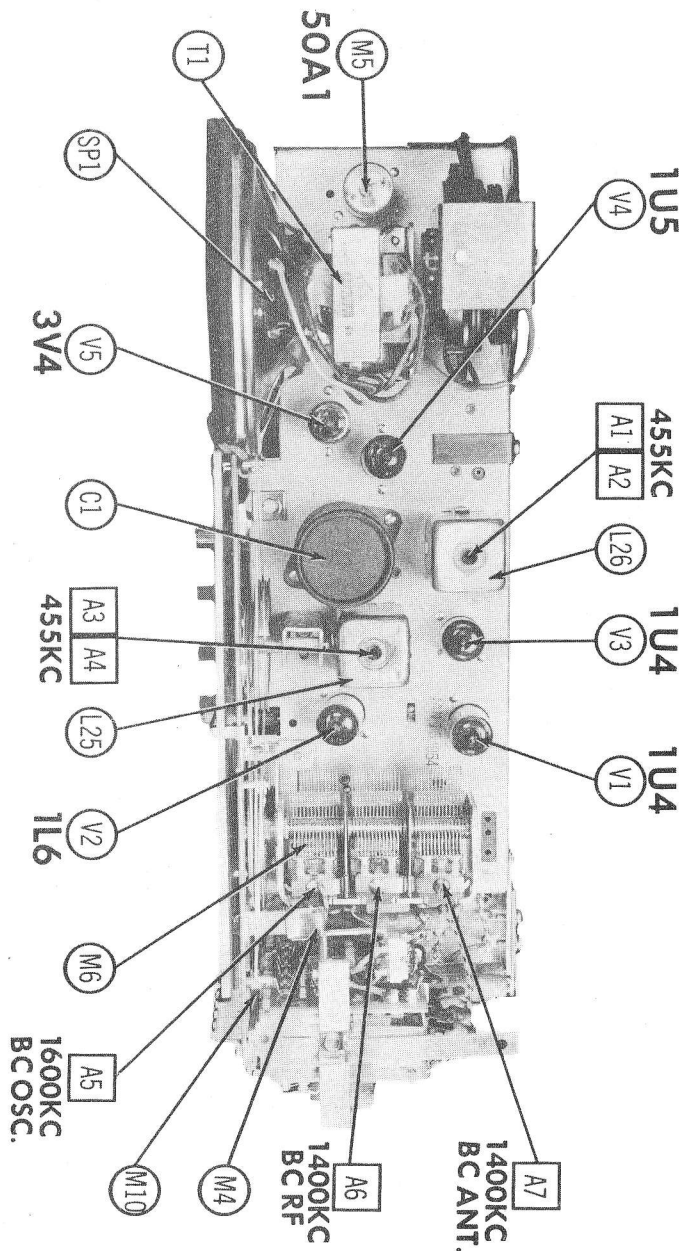
Capacity values given in the rating column are in mfd. for Electrolytic and Paper Capacitors, and in mmfd. for Mica and Ceramic Capacitors.

ITEM No.	RATING		REPLACEMENT DATA						NOTES	
	CAP.	VOLT	ZENITH PART No.	AEROVOX PART No.	CENTRALAB PART No.	CORNELL-DUBILIER PART No.	ERIE PART No.	MALLORY PART No.		SPRAGUE PART No.
C1A	.60	150	22-1741	AFH4-23		D030		FP408	R1079	
C1B	.40	150								
C1C	.20	150								
C1D	200	10								
C2	.12	150	22-2056	PRS150/12		BR1215		TC43	TVA-1407	
C3	.047	200	22-1778	P288-047	DF-503	PJ2847		PT4147	2TM-S47	
C4	.470	500	22-1390			5R5T47		MCE245	MS-35	
C5	.15	22-2329		SI15	D6-150	TP11	GPIK-150	UC-5415	5GA-Q15	
C6	4000	22-4		BPD-004	DD-402	K078	801-004	DC-524	5HK-D4	
C7	.25	22-1392		SI25	D6-250	TP25	GPIK-250	UC-5425	5GA-Q25	
C8	.50	22-1761		SI50	D6-500	TP30	GPIK-500	UC-5450	5GA-Q50	
C9	.01	400	22-1784	P488-01	D6-103	CUB4S1	GP2-333-103	PT411	4TM-S1	
C10	.01	400	22-1846	P488-01	D6-103	CUB4S1	GP2-333-103	PT411	4TM-S1	
C11	.270	500	22-2058			5R5T27		MCE240	MS-33	
C12	.270	500	22-2058			5R5T27		MCE240	MS-33	
C13	10000	22-3		BPD-01	D6-103	K082	801-01	DC-511	5HK-S1	
C14	.1	200	22-1777	P288-1	DF-104	PJ2P1		PT401	2TM-P1	
C15	10000	22-3		BPD-01	D6-103	K082	811-01	DC-511	5HK-S1	
C16	.001	600	22-2127	P688-001	D6-102	CUB6D1	GP2L-102	PT621	6TM-D1	
C17	.047	400	22-1775	P488-047	DF-503	CUB4S47		PT415	4TM-S5	
C18	1000	22-1886		SI1000	D6-102	TP52	GP2L-102	UC-521	5HK-D1	
C19	1.2	22-1765								
C20	.470	500	22-1390			5R5T47		MCE245	MS-35	
C21	.250	22-2126		SI250	D6-251	TP40	GPIK-251	UC-5325	5GA-T25	
C22	.120	22-2279		SI120NP0	TCZ-121	TZ32	NP0K-121		5TCC-T12	
C23	.10	22-1953		SI10	D6-100	TP09	NP0K-100	UC-541	5TCC-Q1	
C24	.120	22-2279		SI120	D6-121	TP35	GPIK-121	UC-5312	5GA-T12	
C25	.120	22-2280		SI120	D6-121	TP35	GPIK-121	UC-5312	5GA-T12	
C26	3000	500	22-2281			IR5D3		MCE461	MS-23	
C27	2750	500	22-1433			IR5D27		MCE460		
C28	10000	22-3		BPD-01	DD-103	K082	811-01	DC-511	5HK-S1	
C29	.022	200	22-2071	P288-022		PJ2S22		PT4122	2TM-S22	
C30	.0033	400	22-1780	P688-0033	D6-332	CUB6D33	GP2-333-332	PT6233	6TM-D33	
C31	10000	22-3		BPD-01	D6-103	K082	811-01	DC-511	5HK-S1	
C32	.50	22-1674		SI50NP0	TCZ-50	TZ23	NP0K-500		5TCC-Q5	
C33	.022	400	22-2072	P488-022		CUB4S22		PT4122	4TM-S22	
C34	10000	22-3		BPD-01	D6-103	K082	811-01	DC-511	5HK-S1	
C35	.01	600	22-1779	P688-01	D6-103	CUB6S1	GP2-333-103	PT611	6TM-S1	
C36	.001	600	22-2127	P688-001	D6-102	CUB6D1	GP2L-102	PT621	6TM-D1	
C37	.022	200	22-2071	P288-022		PJ2S22		PT4122	2TM-S22	
C38	.022	200	22-2071	P288-022		PJ2S22		PT4122	2TM-S22	
C39	.047	600	22-1844	6892X-047	DF-503	CUB6S47		PT6147	6TM-S47	
C40	.047	400	22-1775	P488-047	DF-503	CUB4S47		PT4147	4TM-S47	

CONTROLS

ITEM No.	RATING		REPLACEMENT DATA				INSTALLATION NOTES	
	RESISTANCE	WATTS	ZENITH PART No.	IRC PART No.	CLAROSTAT PART No.	CENTRALAB PART No.		MALLORY PART No.
RIA	1 Meg		63-2276	Q11-137	A47-1Meg-3	AB-69	U-54	Volume Attach to RIA
B	Shaft		Not Req.	Not Req.	KSS-3	AK-4	Not Req.	
C	Switch		Not Req.	76-2	SWE-20	KB-2	US-27	Attach to RIA

CHASSIS—TOP VIEW



PARTS LIST AND DESCRIPTIONS (Continued)

RESISTORS

ITEM No.	RATING		REPLACEMENT DATA		NOTES	ITEM No.	RATING		REPLACEMENT DATA		NOTES
	OHMS	WATT	ZENITH PART No.	IRC PART No.			OHMS	WATT	ZENITH PART No.	IRC PART No.	
R3	1 Meg		63-1912	BTS-1 Meg	R21	18KΩ		63-1838	BTS-18K		
R4	3300Ω		63-1807	BTS-3300	R22	27KΩ		63-1845	BTS-27K		
R5	150Ω		63-1750	BTS-150	R23	12 Meg			BTS-12 Meg	Note 1	
R6	100KΩ		63-1869	BTS-100K	R24	4.7Meg		63-1940	BTS-4.7Meg		
R7	1 Meg		63-1912	BTS-1 Meg	R25	1 Meg		63-1912	BTS-1 Meg		
R8	68KΩ		63-1863	BTS-68K	R26	10 Meg		63-1954	BTS-10 Meg		
R9	100KΩ		63-1869	BTS-100K	R27	1 Meg		63-1912	BTS-1 Meg		
R10	100Ω		63-1743	BTS-100	R28	270Ω		63-1761	BTS-270		
R11	120Ω		63-1747	BTS-120	R29	560Ω		63-1775	BTS-560		
R12	1000Ω		63-1785	BTS-1000	R30	700Ω	4	63-2930			
R13	2.2Meg		63-1926	BTS-2.2Meg	R31	130Ω	3	63-2839			
R14	10 Meg		63-1954	BTS-10 Meg	R32	330KΩ		63-1891	BTS-330K		
R15	5.6Meg		63-1943	BTS-5.6Meg	R33	100Ω		63-1743	BTS-100		
R16	4.7Meg		63-1940	BTS-4.7Meg	R34	10Ω		63-1701	BTS-10		
R17	1 Meg		63-1912	BTS-1 Meg	R35	10Ω		63-1701	BTS-10		
R18	2.2Meg		63-1926	BTS-2.2Meg	R36	180Ω		63-1754	BTS-180		
R19	1500Ω		63-1792	BTS-1500							

Note 1. Some models may use a 15Meg resistor in this application.

TRANSFORMER (AUDIO OUTPUT)

ITEM No.	IMPEDANCE		REPLACEMENT DATA						NOTES
	PRI.	SEC.1	ZENITH PART No.	Stancor PART No.	Merit PART No.	Triad PART No.	Halldorson PART No.	Thordarson PART No.	
		SEC.2							
		14.2Ω Res.							

SPEAKER

ITEM No.	RATINGS			REPLACEMENT DATA			NOTES
	SIZE	FIELD	V. C. IMP.	ZENITH PART No.	JENSEN PART No.	QUAM PART No.	

COILS (RF-IF)

ITEM No.	USE	DC RES.		REPLACEMENT DATA				NOTES
		PRI.	SEC.	ZENITH PART No.	MEISSNER PART No.	MERIT PART No.	MILLER PART No.	
L2	Ant. Loading Coil	1.6Ω		S-20820	19-7047		4628	48 Microhenries
L13	Ant. Coil	.1Ω		S-18735				4-8MC
L4	Ant. Coil	1.2Ω		S-18614				2-4MC
L5	Ant. Coil	.2Ω		S-17718				16 Meter band (7.4-8.2MC)
L6	Ant. Coil	.2Ω		S-17719				19 Meter band (4.8-15.6MC)
L7	Ant. Coil	.2Ω		S-17720				25 Meter band (11.4-12.2MC)
L8	Ant. Coil	.3Ω		S-17721				31 Meter band (9.3-9.9MC)
L9	RF Coil	4Ω	6Ω	S-20844	14-1072	BC-382 *	72-RF *	540-160KC
L10	RF Coil	.1Ω		S-18615				4-8MC
L11	RF Coil	1.2Ω		S-18614				2-4MC
L12	RF Coil	.2Ω		S-17714				17.4-18.2MC
L13	RF Coil	.3Ω		S-17715				14.8MI5.6MC
L14	RF Coil	.3Ω		S-17716				11.4-12.2MC
L15	RF Coil	.4Ω		S-17717				9.2-9.9MC
L16	RF Coupling	.2Ω		S-20843	19-1002		4606	3 Microhenries
L17	Osc. Coil	Pri. 1= 3.5Ω Pri. 2= .8Ω	Sec. 1= 5.2Ω Sec. 2= 0Ω	S-17709				540-1600K=

PARTS LIST AND DESCRIPTIONS (Continued)

COILS (cont)

ITEM No.	USE	DC RES.		REPLACEMENT DATA				NOTES
		PRI.	SEC.	ZENITH PART No.	MEISSNER PART No.	MERIT PART No.	MILLER PART No.	
L19	Osc. Coil	.7Ω	.4Ω	S-17731				2-4MC
L20	Osc. Coil	.1Ω		S-17726				17.4-18.2MC
L21	Osc. Coil	.1Ω		S-17727				14.8-15.6MC
L22	Osc. Coil	.2Ω		S-17728				11.4-12.2MC
L23	Osc. Coil	.3Ω		S-17729				9.3-9.9MC
L24	Osc. Coupling	.2Ω		S-14403	19-1003			4 Microhenries
L25	Input IF	27Ω	25Ω	95-1148	16-6666	BC-368		
L26	Output IF	24Ω	23Ω	95-1149	16-6778 †	BC-355 †		

* Drill mounting hole.
† Use adaptor plate.

SELENIUM RECTIFIER

ITEM No.	RATING	REPLACEMENT DATA					NOTES	
	CURRENT	ZENITH PART No.	FEDERAL PART No.	INTERNATIONAL PART No.	MALLORY PART No.	SARKES TARZIAN PART No.		SELETRON PART No.
M1	.071A	212-13 212-7 Ⓢ	1101A	RS100	6S100	100	5M4	Ⓢ Alternate

BATTERIES

ITEM No.	VOLTAGE	ZENITH PART No.	REPLACEMENT DATA						INSTALLATION NOTES
			EVEREADY			BURGESS			
			"A"	"B"	"A-B"	"A"	"B"	"A-B"	
M2	9V "A"	Z-985X			752				
M3	90V "B"								
M3	1.5V	Z-1	1052P			8R			Pilot light battery

MISCELLANEOUS

ITEM No.	PART NAME	ZENITH PART No.	NOTES
M4	Dial light	100-171	# 222 screw base
M5	Tube	100-162	Ballast 50A1
M6	Tuning cap	22-2520	3 sections at 16-462MMF each
M7	Switch	85-543 or 85-520	Power changeover
M8	Switch	85-542	Momentary contact (dial light)
M9	Switch	85-503	Tone- 4 used
M10	Switch	S-20821	Push button band selector including bracket & coil assembly
			Push switch only-part of S-20821 - 7 used
			Bandswitch mounting bracket & terminals part of S-20821
			Single section (AM osc. coil adjust)
			Dual section (2-4, 4-8MC osc. adjust)
			Dual section (2-4, 4-8MC osc. RF coil adjust)
			Dual section (2-4, 4-8MC ant. coil adjust)
			Telescoping assembly
	Trimmer Cap	85-502	
	Trimmer Cap	S-17806	
	Trimmer Cap	22-2282	
	Trimmer Cap	22-2283	
	Trimmer Cap	22-2284	
	Trimmer Cap	22-2285	
	Antenna	S-15802	
	Cabinet	14-1633	
	Knob	46-912	Push button, 7 used
	Knob	46-913	Tuning
	Knob	46-1242	Volume