

DXSR8T/E Transmission-Only Expansion

Turn off the unit and remove the power source.

- ① Remove the bottom cover.
- ② Solder-bridge the port B as shown below.
- ③ Reassemble the cover, supply DC power and turn on with FUNC key pressed to reset.

Default DX-SR8T/E:

TX coverage: As per specification / amateur-radio bands only

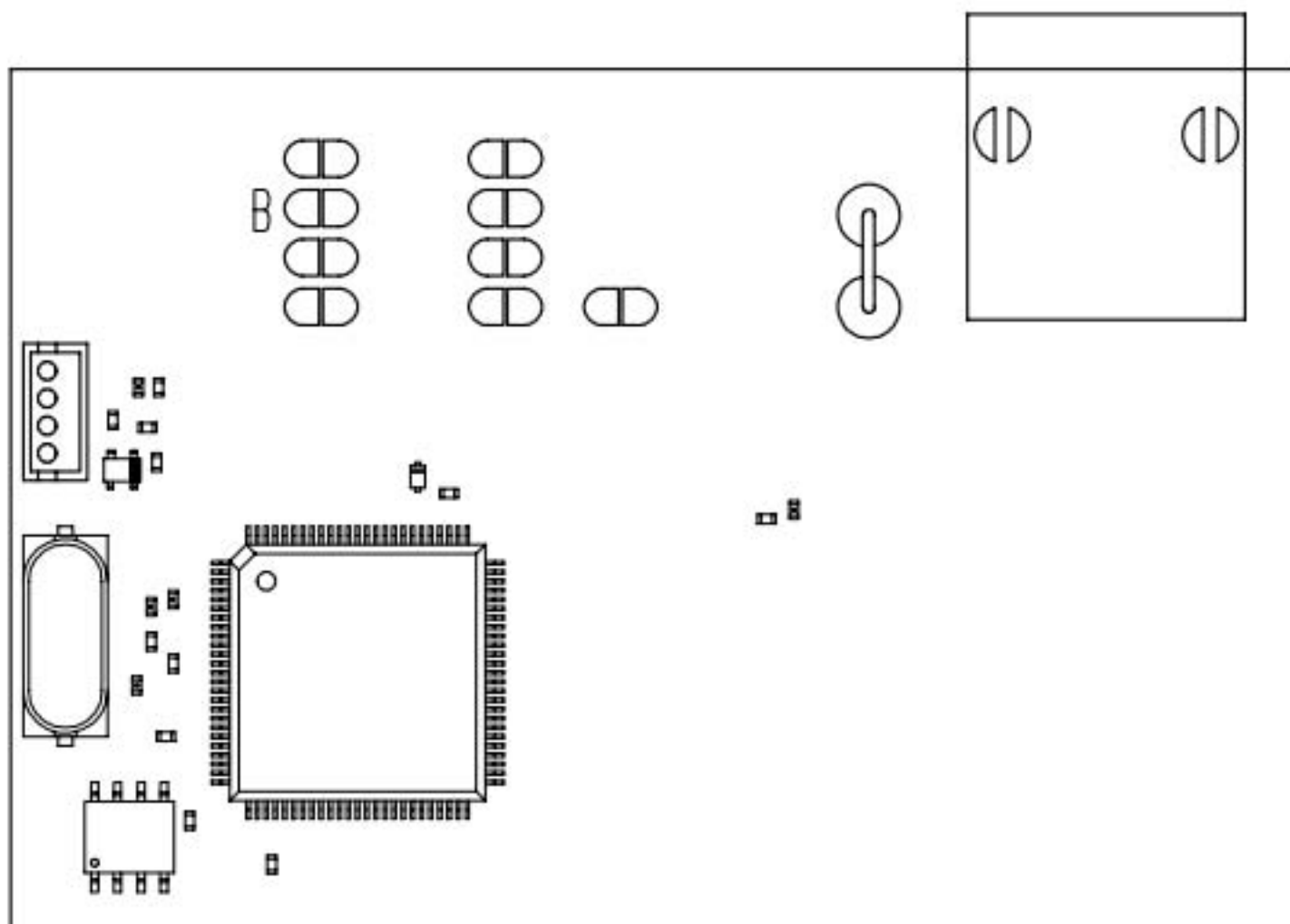
RX coverage : 135kHz -29.99999MHz



After the Modification:

TX range : 1.6MHz - 29.99999MHz general coverage

RX range : 135kHz -29.99999MHz (Remain unchanged)



DXSR8T/E Receiver expansion

Turn off the unit and remove the power source.

- ① Remove the bottom cover.
- ② Solder-bridge the port A as shown below.
- ③ Reassemble the cover, supply DC power and turn on with FUNC key pressed to reset.

Default DX-SR8T/E:

TX coverage: As per specification / amateur-radio bands only

RX coverage : 135kHz –29.99999MHz



After the Modification:

TX range : As per specification / amateur-radio bands only (Remain unchanged)

RX range : 30kHz –34.99999MHz

- **SOLDER BRIDGE BOTH A AND B makes it to TX/RX general coverage.**

