

Frequency Adjustment

Enter Test Menu:

Hold **【MENU】**+**【MODE】** key to power on and enter test mode, switch **【PUSH】** to choose test menu, press **【PUSH】** to enter test item, then switch **【PUSH】** again to adjust the value, press **【PUSH】** again to choose step size, press any key to exit.

Test device HP8921A setting: TX Interface

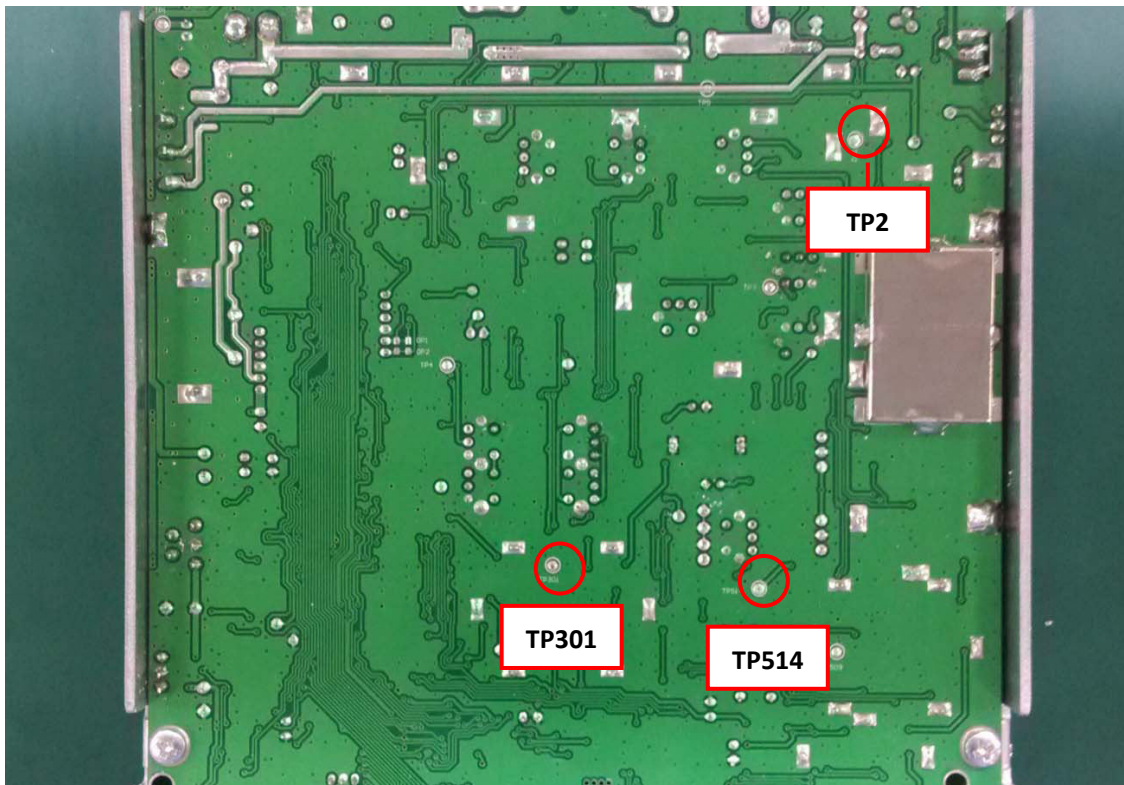
Tune Mode: Manual

Tune Freq: Input Freq. for testing

Input Port: Ant

Antenna connector for device: RF IN/OUT

Connector for testing pen: ANT IN



1. VCO Adjustment:

Enter test mode, FM mode, test point: TP2

- A. FREQ: Choose channel 4, adjust L807 to get frequency range $38.555\text{MHz} \pm 10\text{Hz}$, background noise $< 40\text{Hz}$.

Note: Do not use PUSH switch to adjust the value, only use L807. If the error is within 100Hz , adjust the value $\pm 70\text{Hz}$.

2. BFO Adjustment:

Enter test mode, choose channel 6, test point: TP301

- A. Switch to FM mode, adjust frequency to $10.695\text{MHz} \pm 10\text{Hz}$, background noise $< 40\text{Hz}$.
B. Switch to USB mode, adjust frequency to $10.6973\text{MHz} \pm 10\text{Hz}$, background noise $< 40\text{Hz}$.
C. Switch to LSB mode, adjust frequency to $10.6927\text{MHz} \pm 10\text{Hz}$, background noise $< 40\text{Hz}$.

3. AFF Adjustment:

Enter test mode, choose channel 7, FM mode, test point: TP514.

- A. adjust frequency to $10.240\text{MHz} \pm 10\text{Hz}$, background noise $< 40\text{Hz}$.



CRT SS 9900 expand freq operation

In power off status, press **【MENU】** + **【BAND】** together to open radio, turn **【PUSH】** to select HF. BAND, Freq Range: 28.0000–29.6950MHz

Freq Name	Channel No.	Freq Range	Remark
A	40CH	28.0000–28.1950MHz	
B	40CH	28.2000–28.3950MHz	
C	40CH	28.4000–28.5950MHz	
D	40CH	28.6000–28.7950MHz	
E	40CH	28.8000–28.9950MHz	
F	40CH	29.0000–29.1950MHz	
G	40CH	29.2000–29.3950MHz	
H	40CH	29.4000–29.5950MHz	
I	20CH	29.6000–29.6950MHz	Default

In power off status, press **【MENU】** + **【BAND】** together to open radio, turn **【PUSH】** to select CB. BAND, Freq Range: 25.6150–30.1050MHz

Freq Name	Channel No.	Freq Range	Remark
A	40CH	25.615–26.005MHz	Default
B	40CH	26.065–26.505MHz	
C	40CH	26.515–26.955MHz	
D	40CH	26.965–27.405MHz	
E	40CH	27.415–27.855MHz	
F	40CH	27.865–28.305MHz	
G	40CH	28.315–28.755MHz	
H	40CH	28.765–29.205MHz	
I	40CH	29.215–29.655MHz	
J	40CH	29.665–30.105MHz	