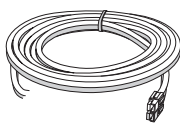


Radio



Microphone

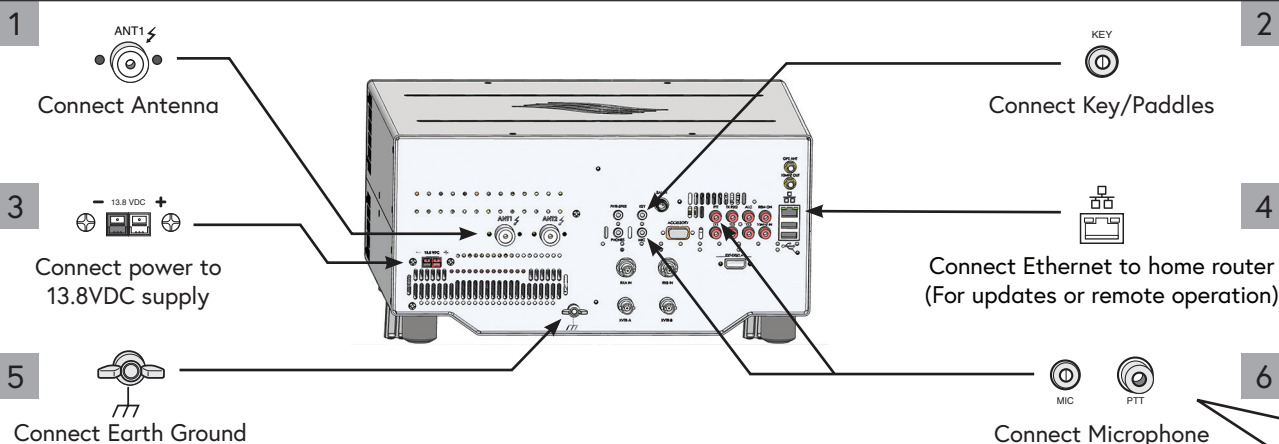


Power Cable

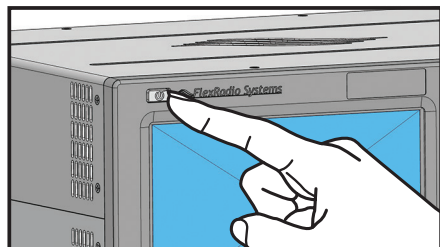


Ethernet Cable

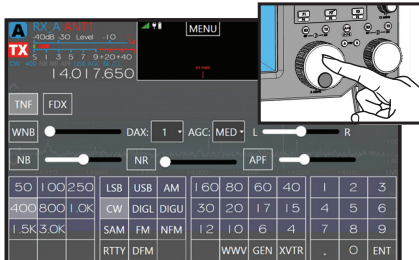
### Verify contents of the box



### Make connections



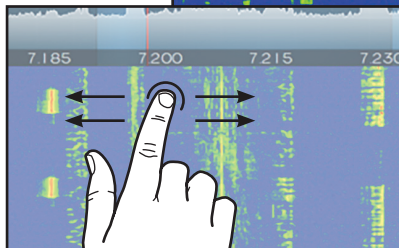
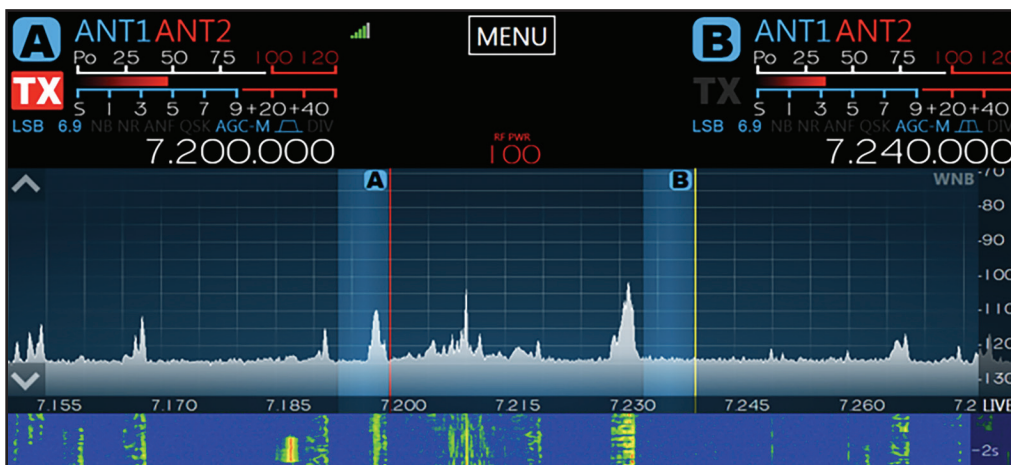
Turn on radio



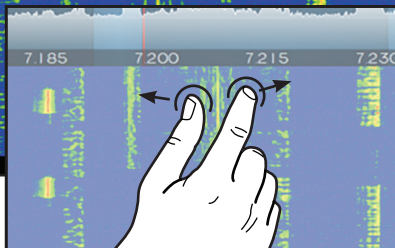
Press and hold VFO for Receiver Menu



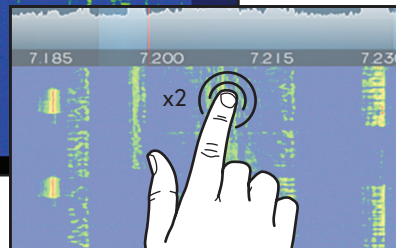
Press Power Knob for Transmit Menu



Drag to pan

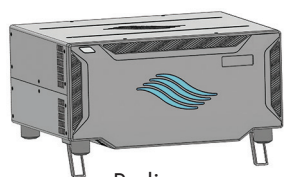


Pinch to zoom



Double tap to tune

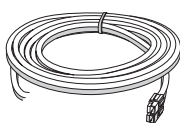
### Multitouch Gestures



Radio



Microphone

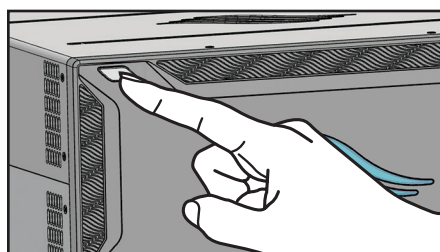
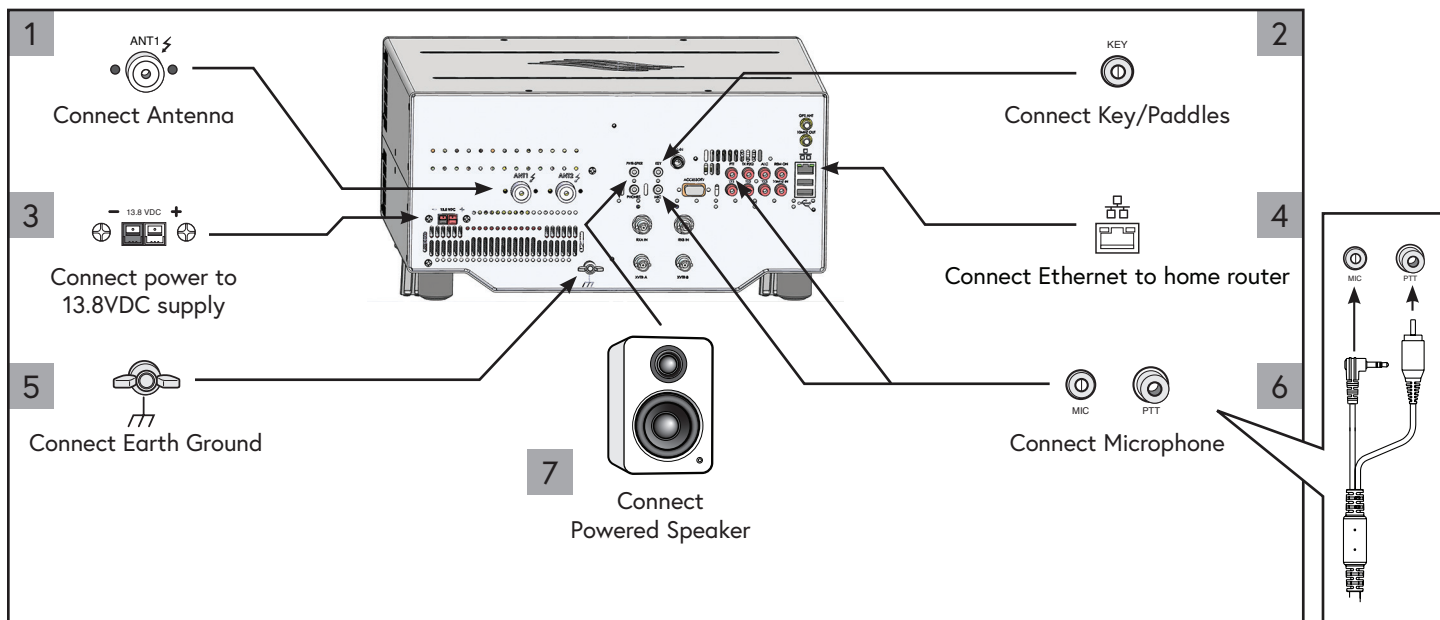


Power Cable



Ethernet Cable

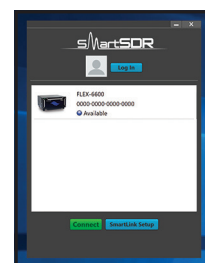
### Verify contents of the box



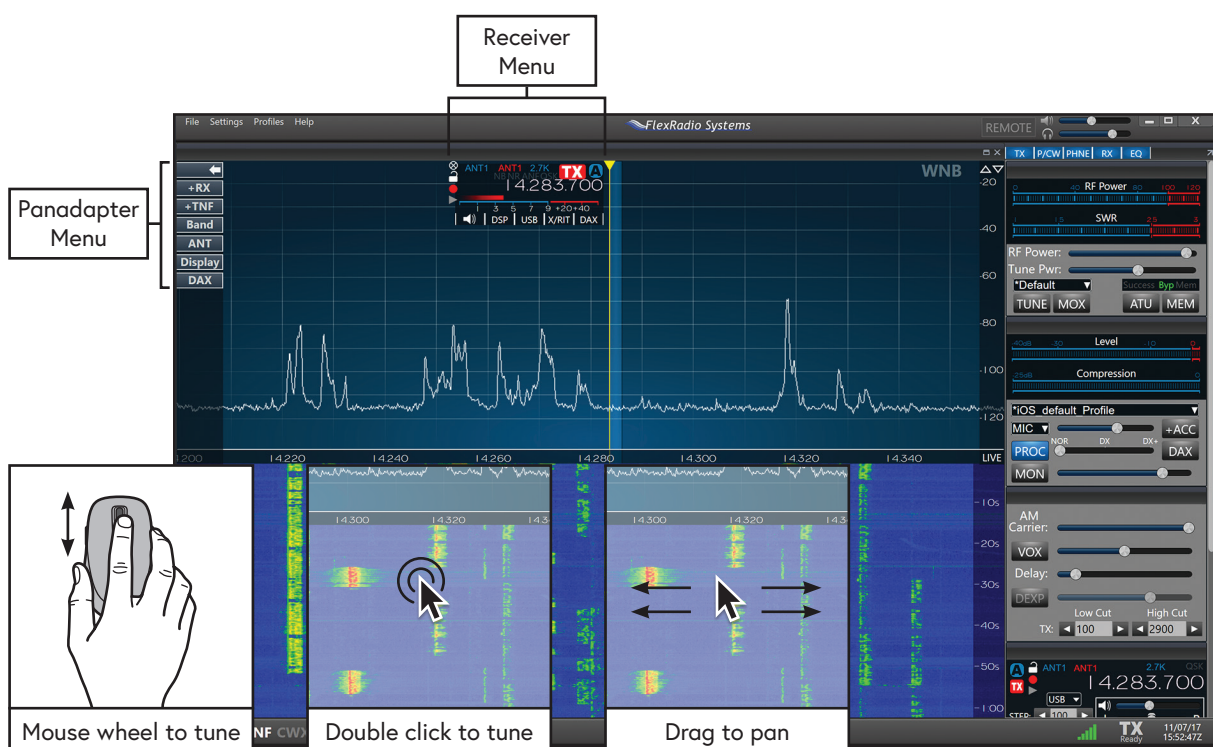
Turn on radio

[flexradio.com/downloads](http://flexradio.com/downloads)

Download and install  
SmartSDR



Select radio from chooser and  
click connect



### Software Controls

For additional information on safety and operation please refer to the User Manual at [flexradio.com/downloads](http://flexradio.com/downloads)  
For technical support go to [helpdesk.flexradio.com](http://helpdesk.flexradio.com)