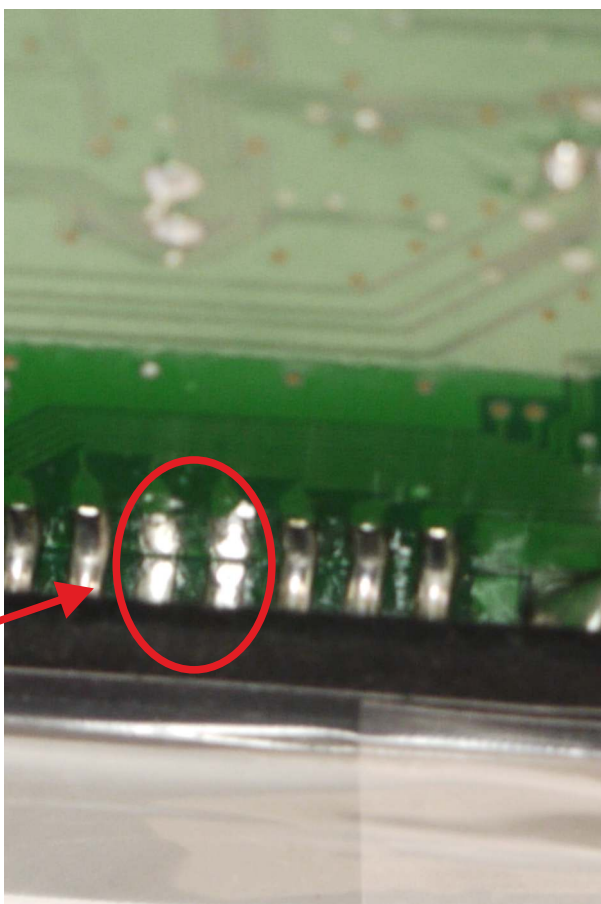
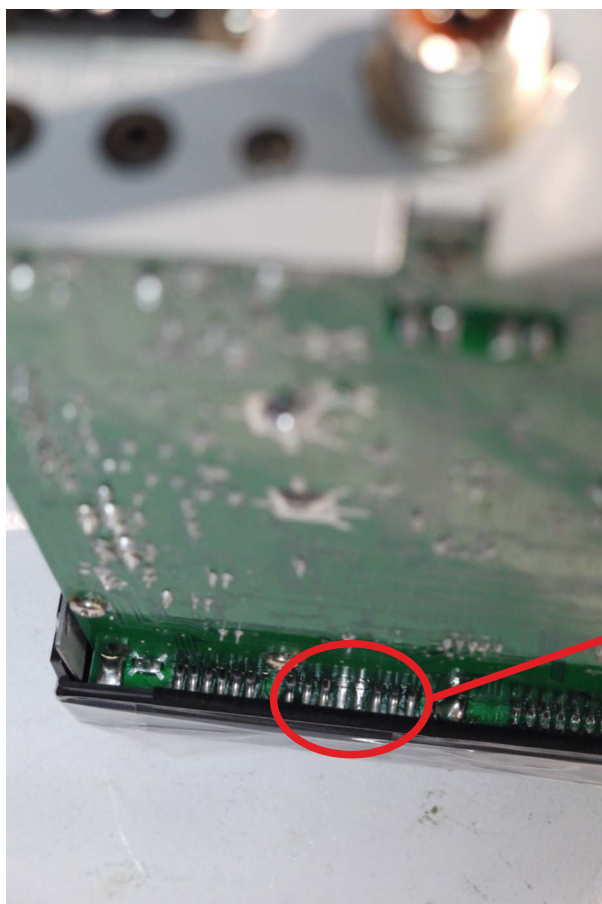


unscrew



These two points must be soldered
for transform into CB 400 Ch

President JFK-2A+

- Toets **CH 19/9** gedurende 3seconden ingedrukt houden om een keuze te maken tussen **Kanaal of Frequentie** uitlezing op de display.
- Toets **MEM** 3 seconden ingedrukt houden om de bandkeuze (BND) te wijziggen.

In de display knippert dan een van de letters A b C d E F g H I J.
Maak een keuze met de kanalenkiezer, voor de normale CB-band is dat **A**.

Keuze bevestigen door **MEM** toets 3 sec. ingedrukt te houden.

- Toets **AM/FM** toets kort indrukken om keuze te maken tussen AM/FM (voor Nederland is dat FM meest gebruikte)
- Controleer altijd of **RF Gain** en **Mic Gain** potmeters geheel open staan (rechtsom draaien).

+++++

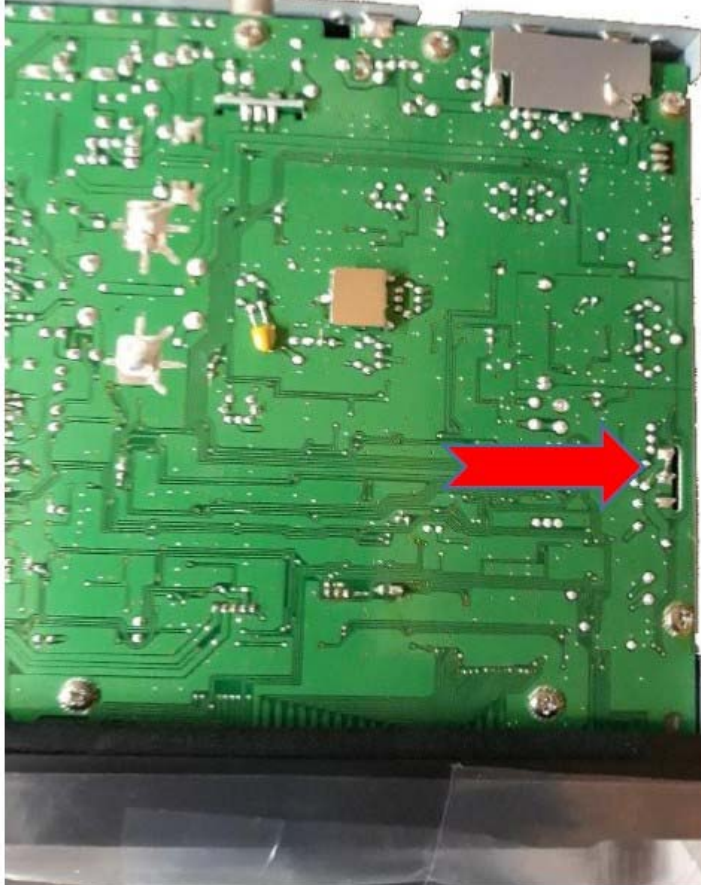
- Push button **CH 19/9** during 3 seconds.
Select **Channel** or **Frequency** read out in the display.
- Push **MEM** during 3 seconds to change the selected Band (BND)
In the display blinks one of the letters of a band A b C d E F g H I J.
Use the channel selector to select the desired band.
The standard CB band is **A**.
Confirm the band by pushing **MEM** during 3 seconds.
- To select AM or FM, push the **AM/FM** button.
- Always check **RF Gain** and **Mic Gain**. These should be 'open', turn the potmeter to the right.

President JFK II A+ (USA Model)

Modification: Create adjustable Output Power

Remove top cover from radio

Check PCB, right hand side, for the bridge



Cut the bridge or desolder the bridge



Output Power is adjustable now.

Use the power knob on front of radio to adjust output power.