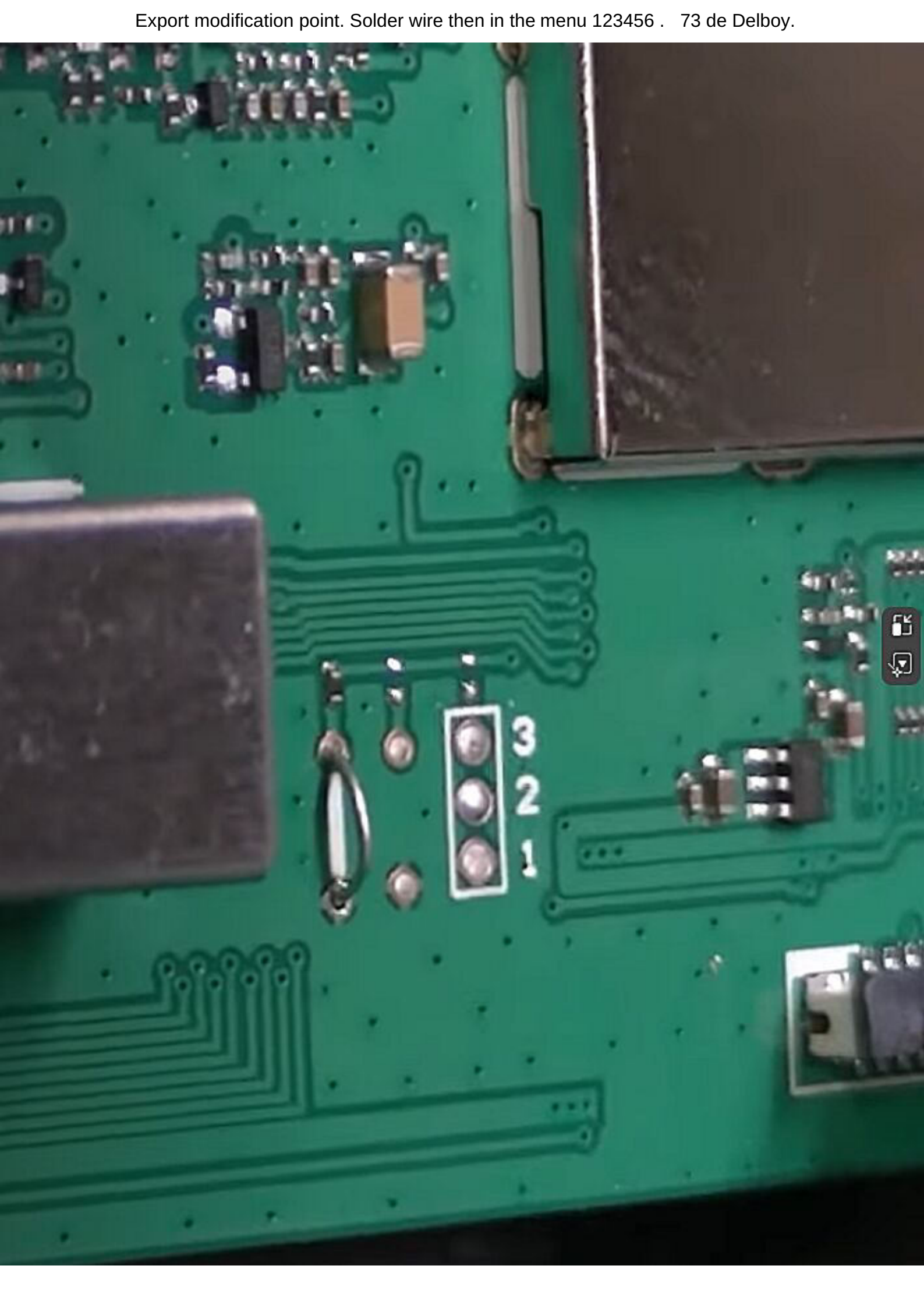
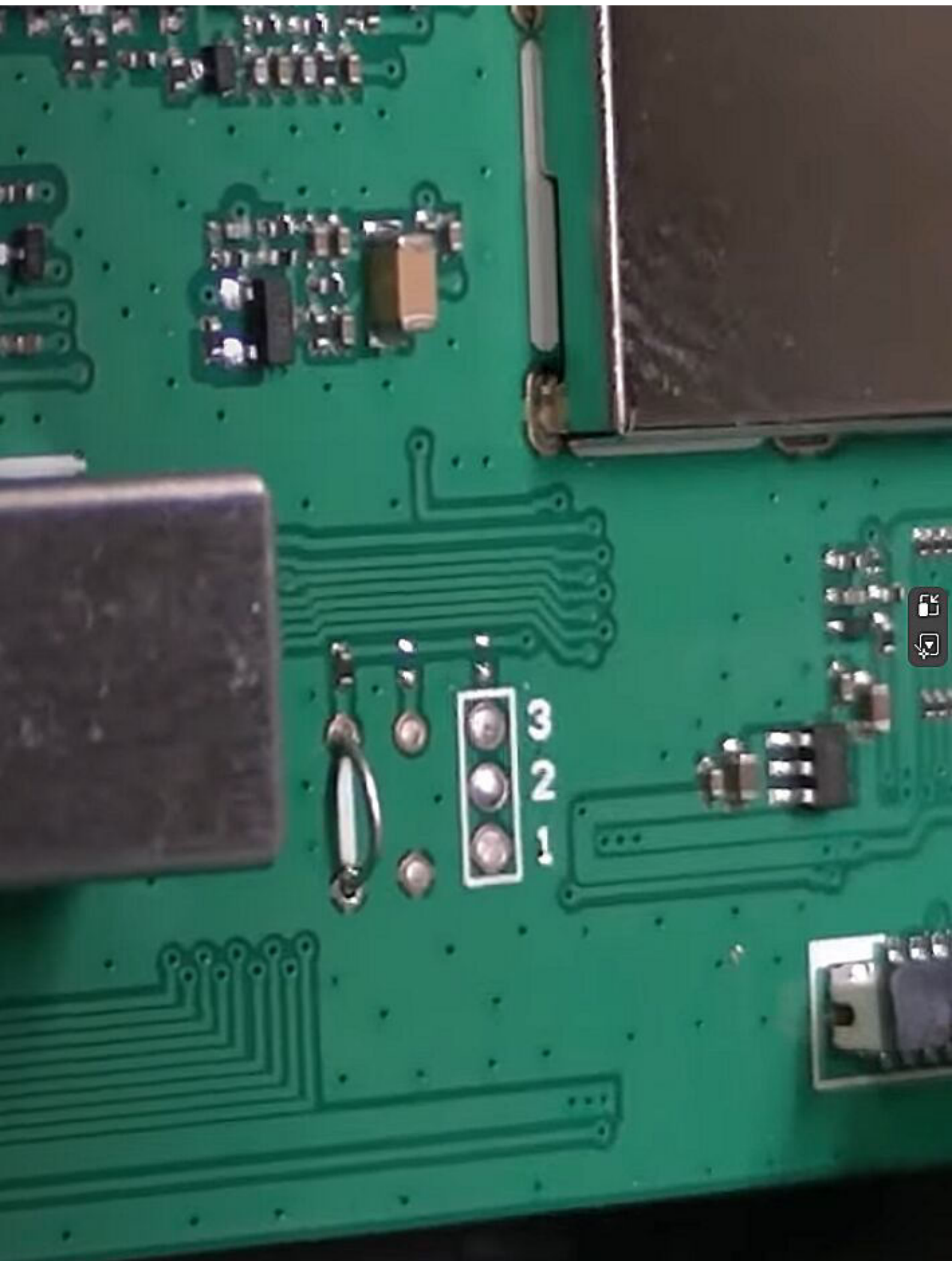


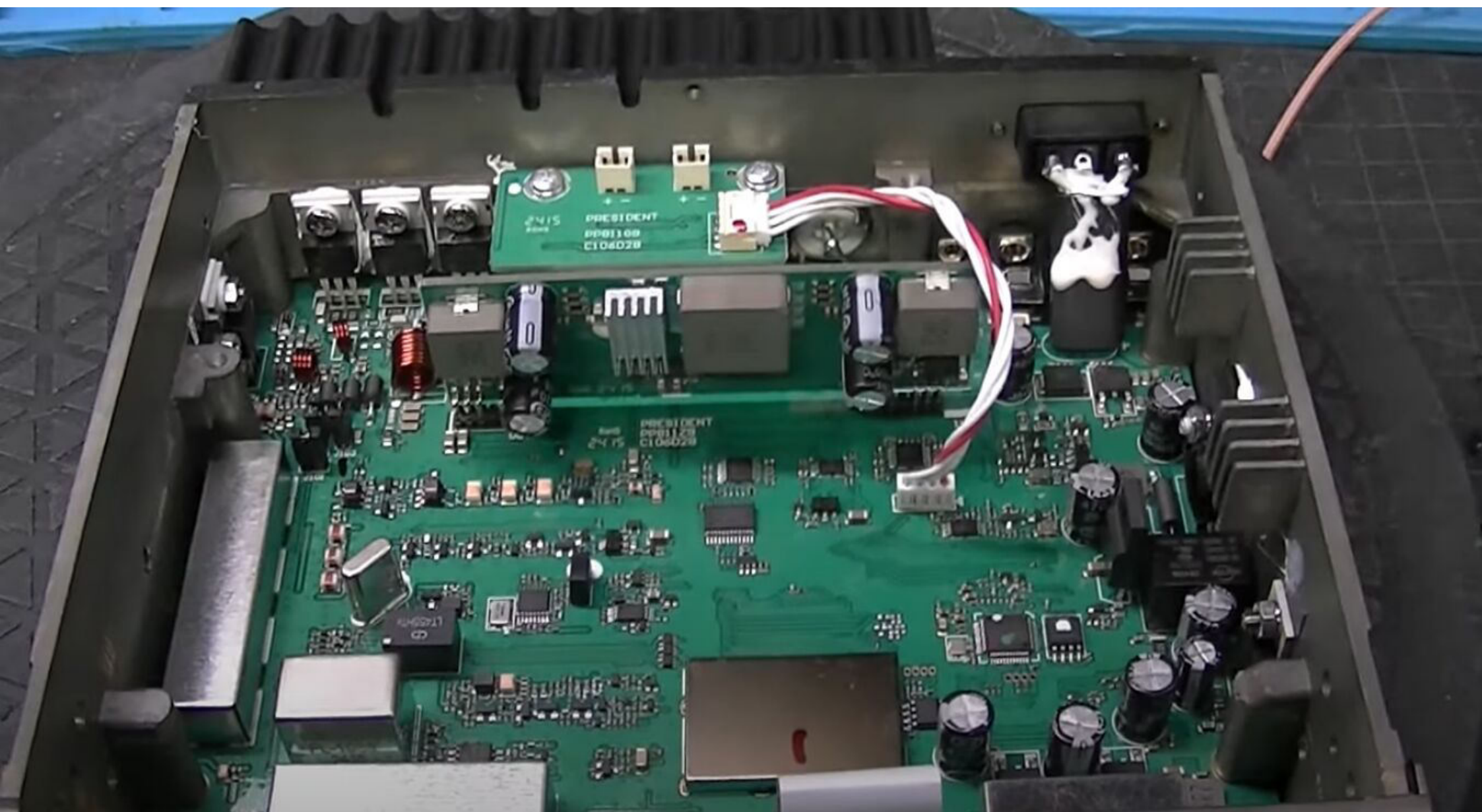


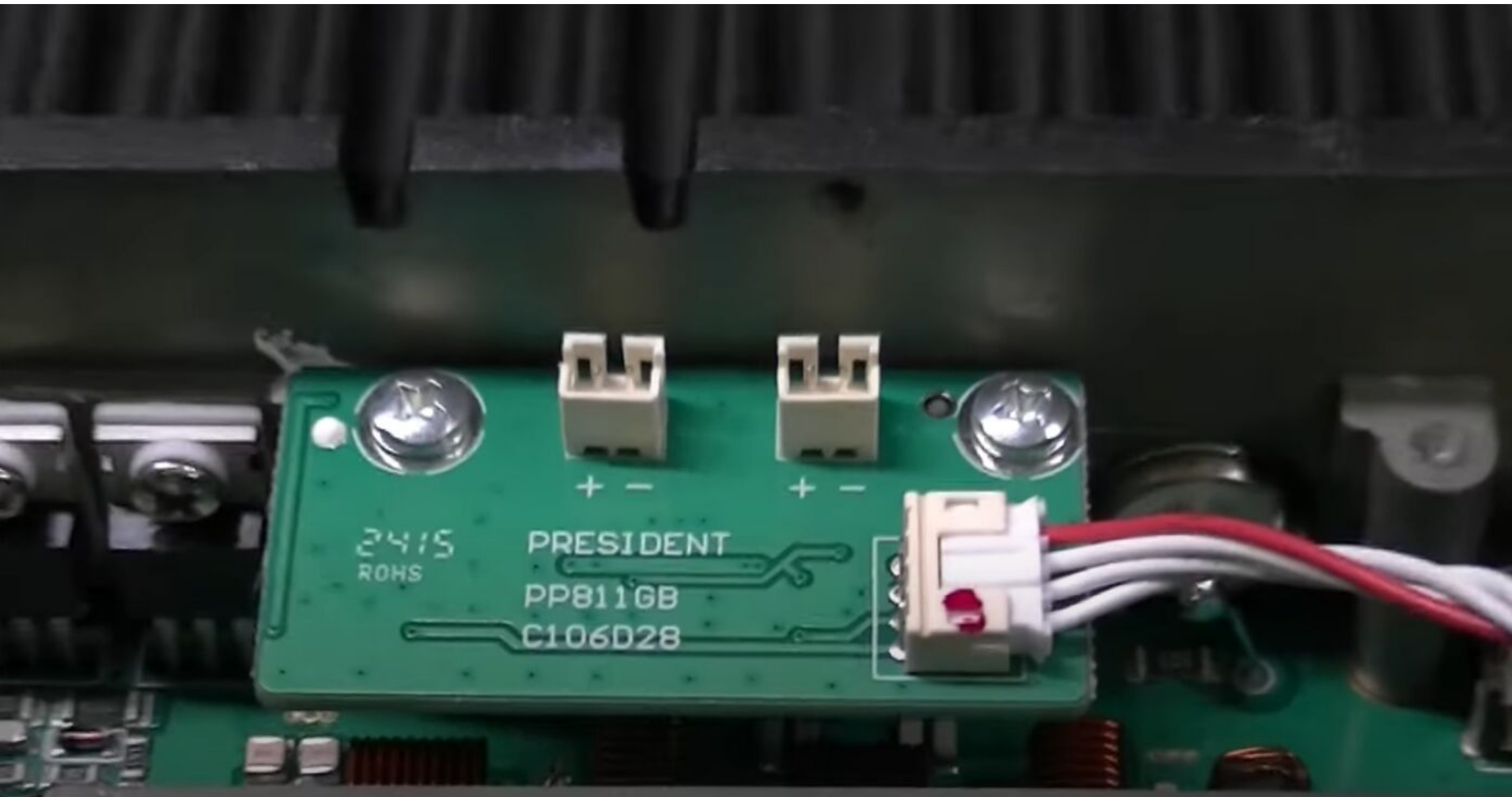


Export modification point. Solder wire then in the menu 123456 . 73 de Delboy.

A close-up photograph of a green printed circuit board (PCB). In the center, there is a 3-pin header with pins labeled 1, 2, and 3 from bottom to top. A small metal loop is soldered to pin 1. To the left of the header, there is a large, dark, rectangular component. Above the header, there is a small cluster of components, including a capacitor and some resistors. To the right, there is another component with multiple pins. The PCB has various traces and pads visible.







2415  
ROHS

PRESIDENT  
PP811GB  
C106D28



