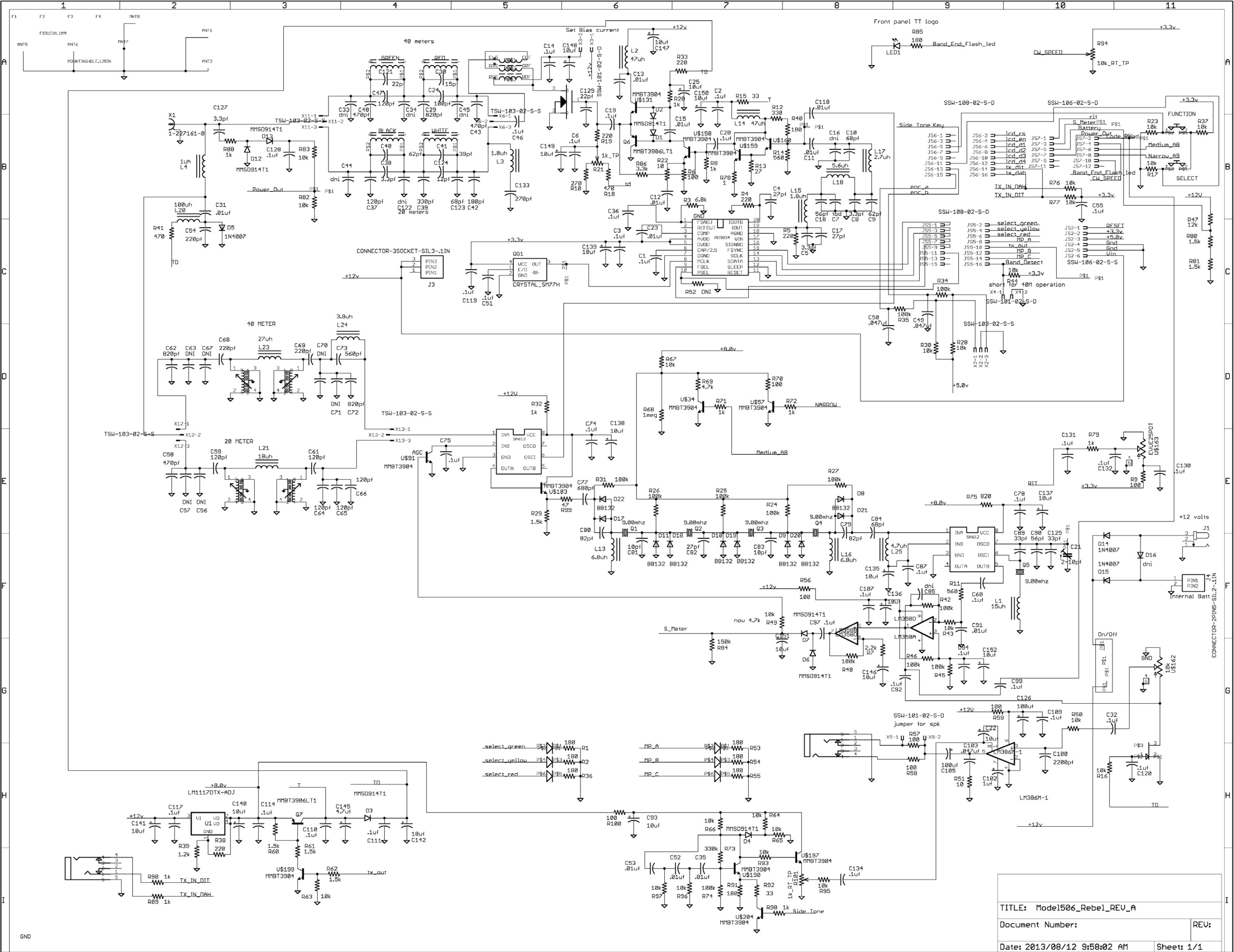
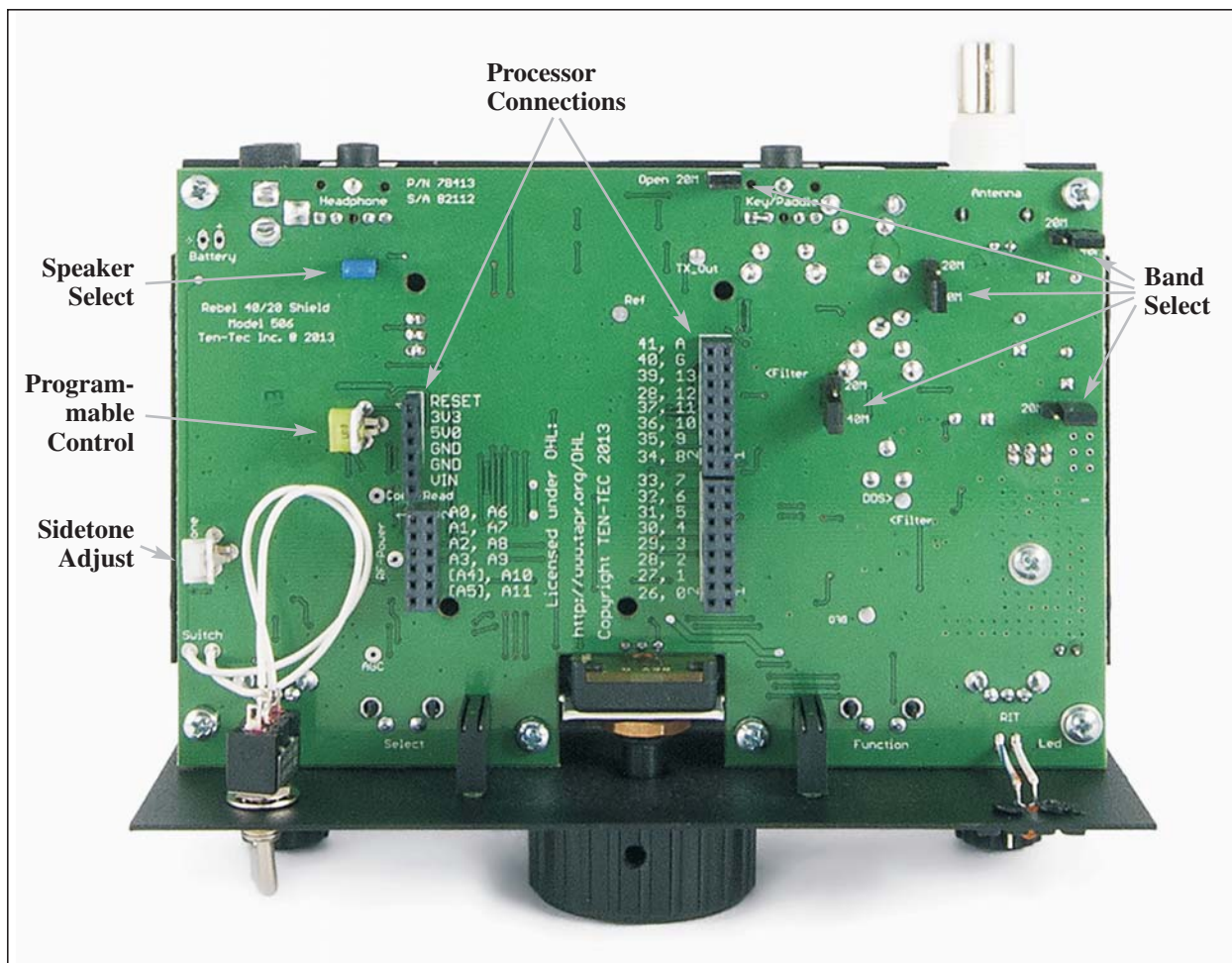


5. Model 506 Rebel  
Schematic Diagram





and sleeve. If the user wishes to add a keyer as part of the Arduino programming, both tip and ring connections are accessible to the processor for the paddle inputs.

### 3.2 Sidetone Level Adjustment

A sidetone level adjustment potentiometer can be reached via an access hole on the left side panel (visible in the photo at the beginning of this manual).

### 3.3 User-Programmable Potentiometer

An additional internal potentiometer is available for user programming (e.g., CW keying speed), and is accessible via a second access hole on the left side panel.

## 4. 506 Internal Adjustments and Connections

(Refer to the photo above)

### 4.1 40/20 Meter Band Selection

To select the desired band, the user must move five (5) jumpers located in the right rear area of the main PC board. The outer pins of the 3-pin headers are labeled “20M” and “40M” to indicate the proper position of the jumper. Be sure that all five jumpers are in position for the desired band before applying power.

### 4.2 Speaker/Headphone Selection

A 2-pin header and jumper for speaker/headphone selection is located in the left rear portion of the PC board. The jumper is placed