

**LATE PRODUCTION LOT ADDENDUM
FOR**

FT-767GX

TECHNICAL SUPPLEMENT

LOCAL UNIT (PROD. LOT 18+)

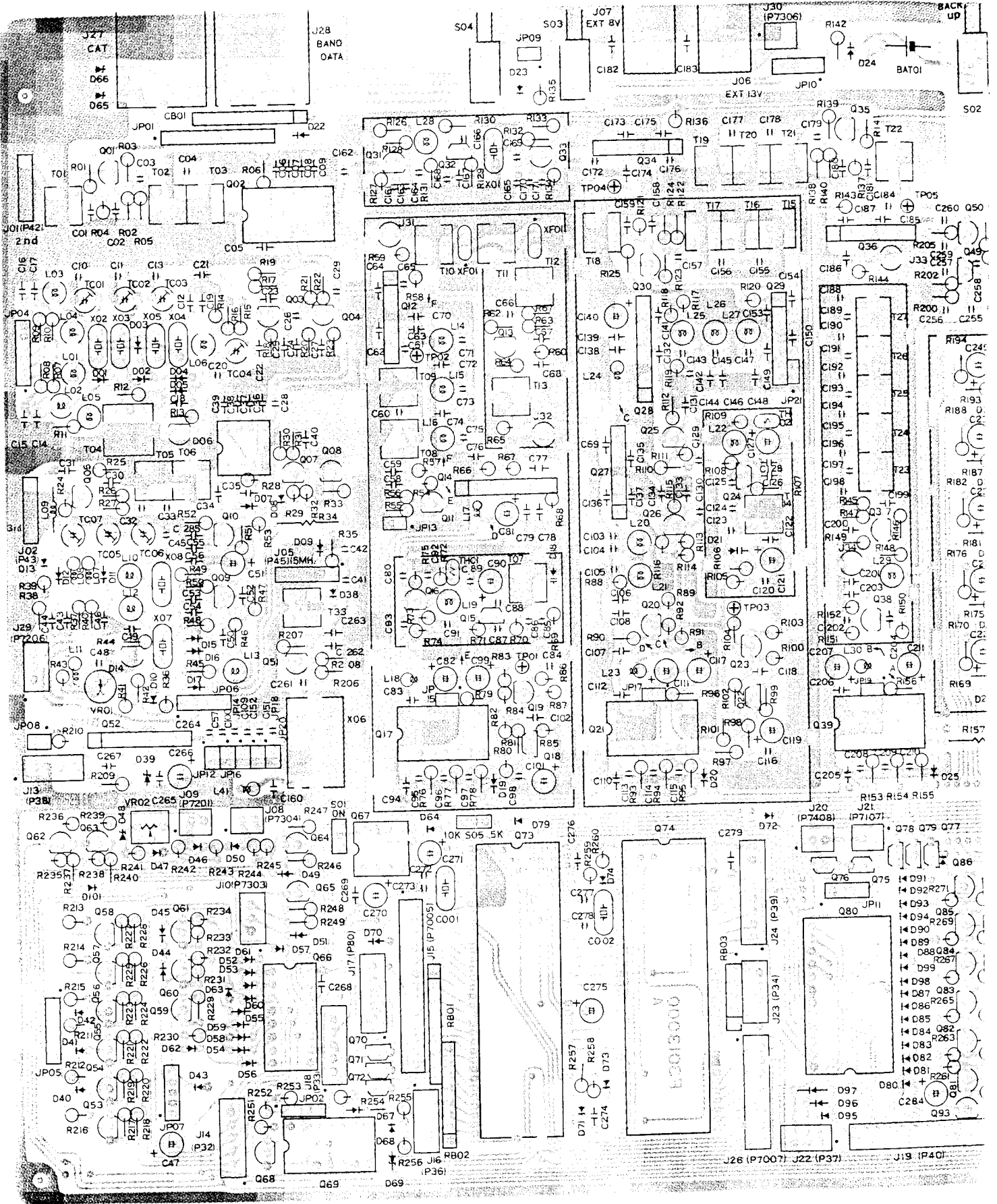
FEX-767-2 PLL UNIT (PROD. LOT 18+)

YAESU MUSEN CO., LTD.

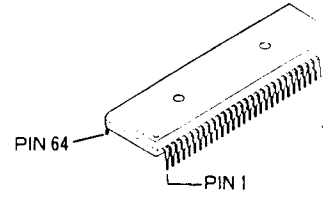
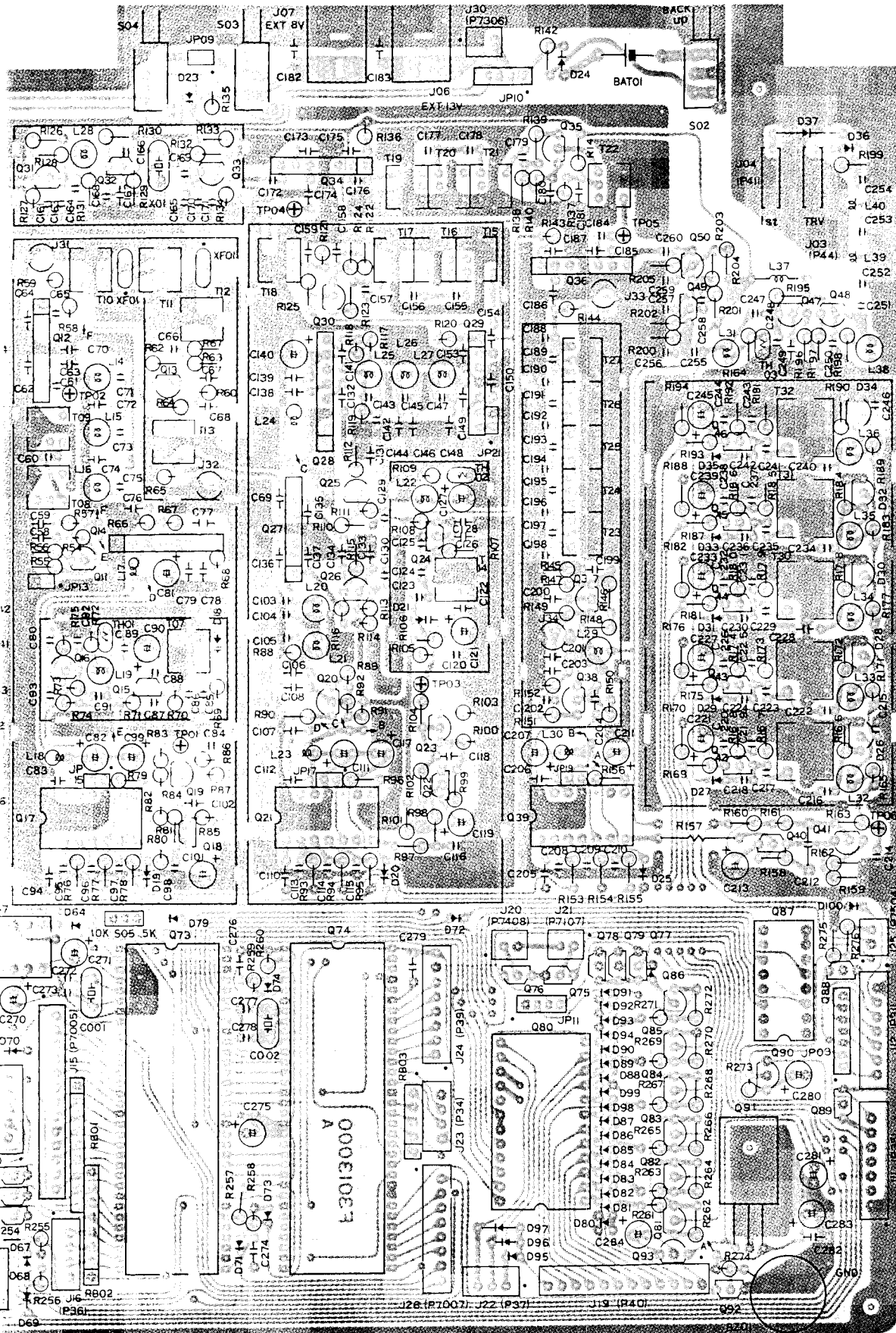
C.P.O. BOX 1500

TOKYO, JAPAN

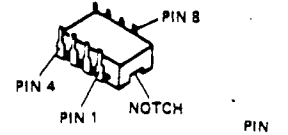
LOCAL UNIT PA



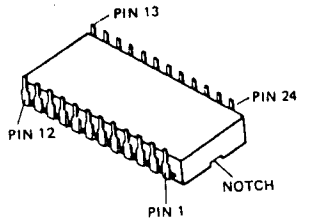
LOCAL UNIT PARTS LAYOUT



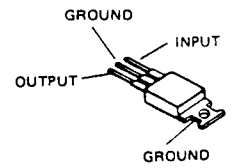
HD63A05Y0D01P (Q30)



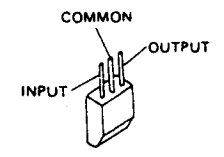
SN16913P (Q3006)
TL7705CP-B (Q3069)



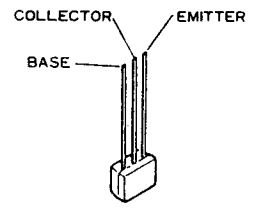
SN74159N (Q3080)



μPC7805H (Q3091)

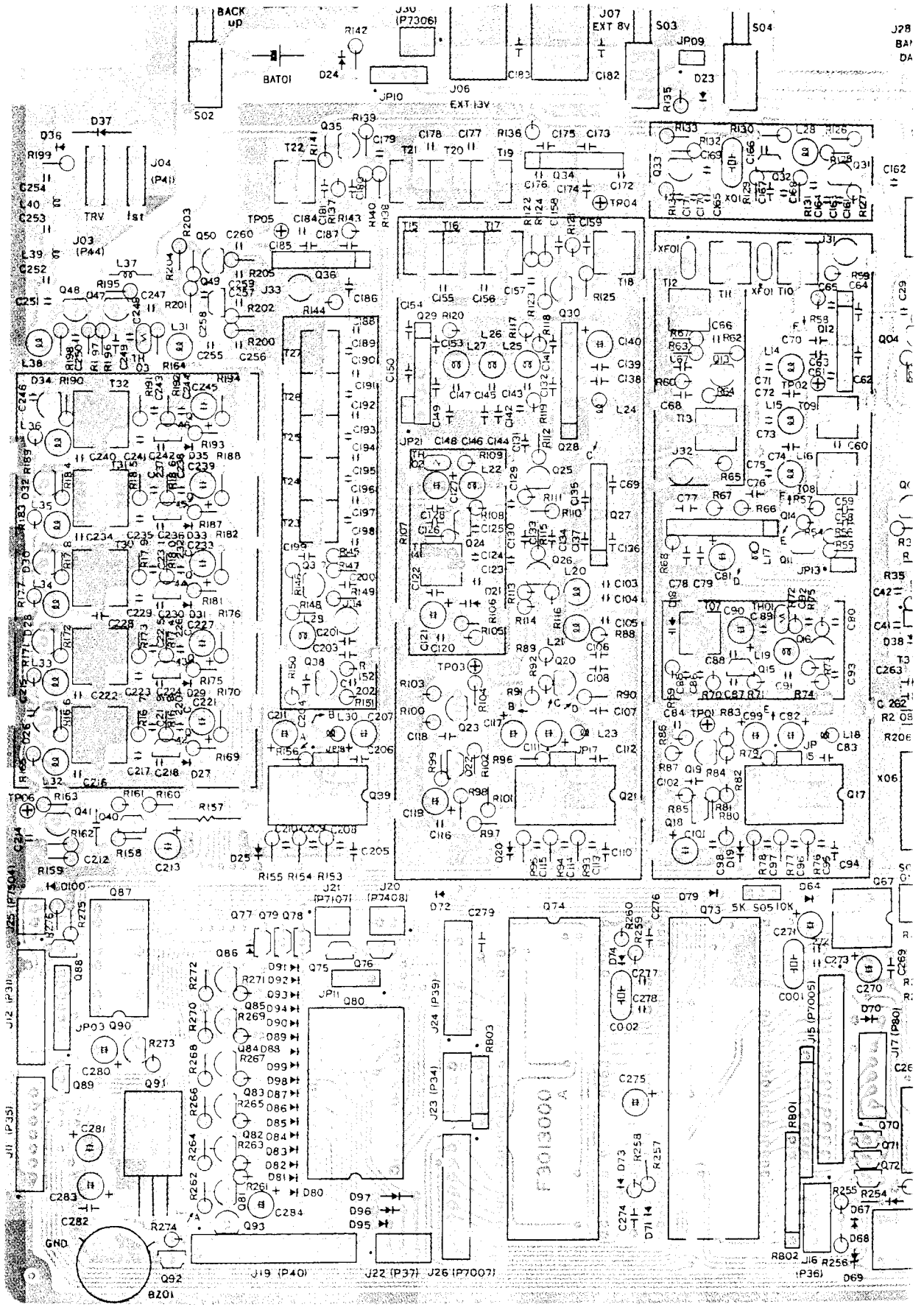


NJM78L09A (Q3093)

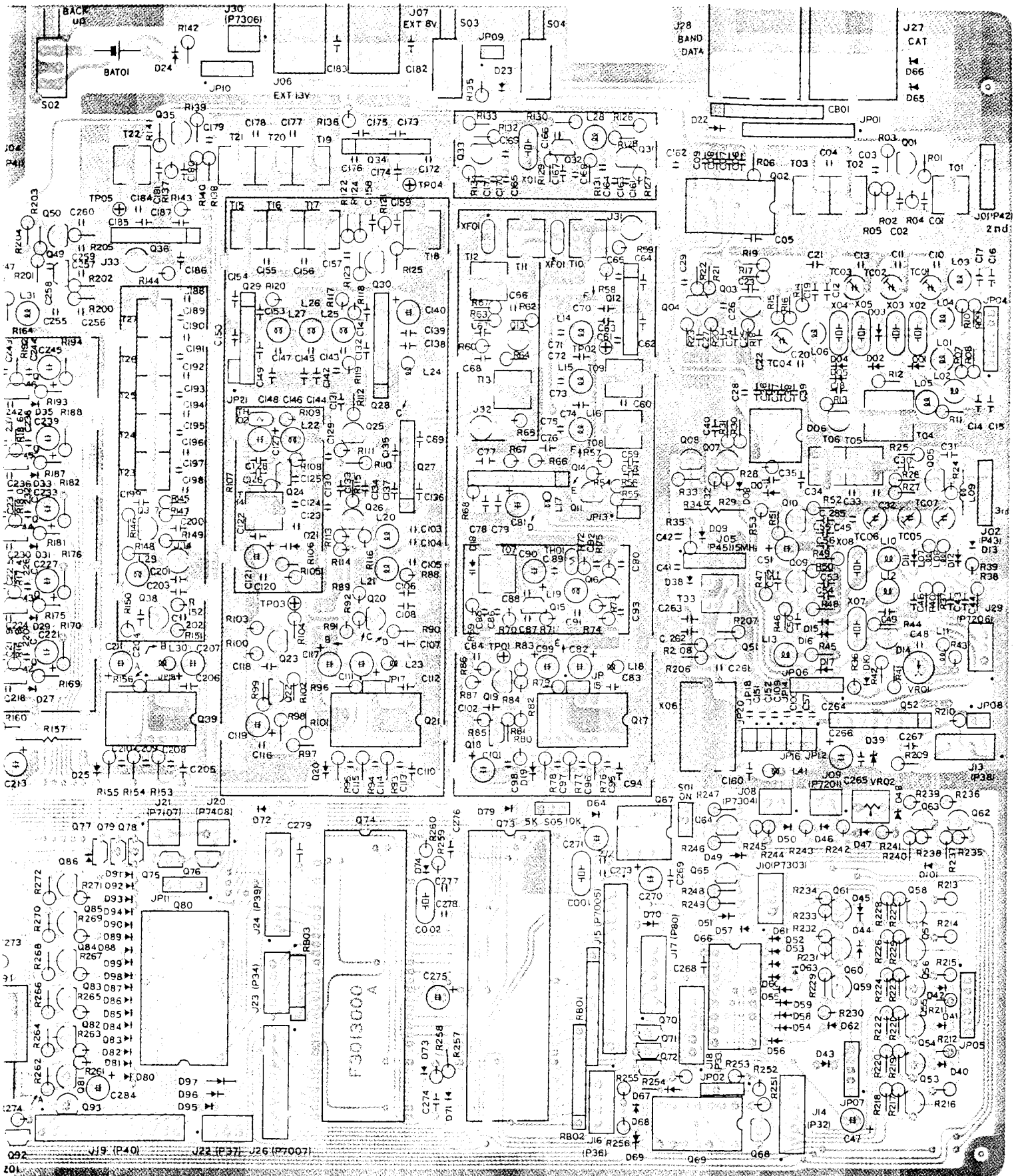


BA1A4P (Q3070~3072,
3075~3079,
3089, 3092)
BN1A4P (Q3088)

(Obverse View)



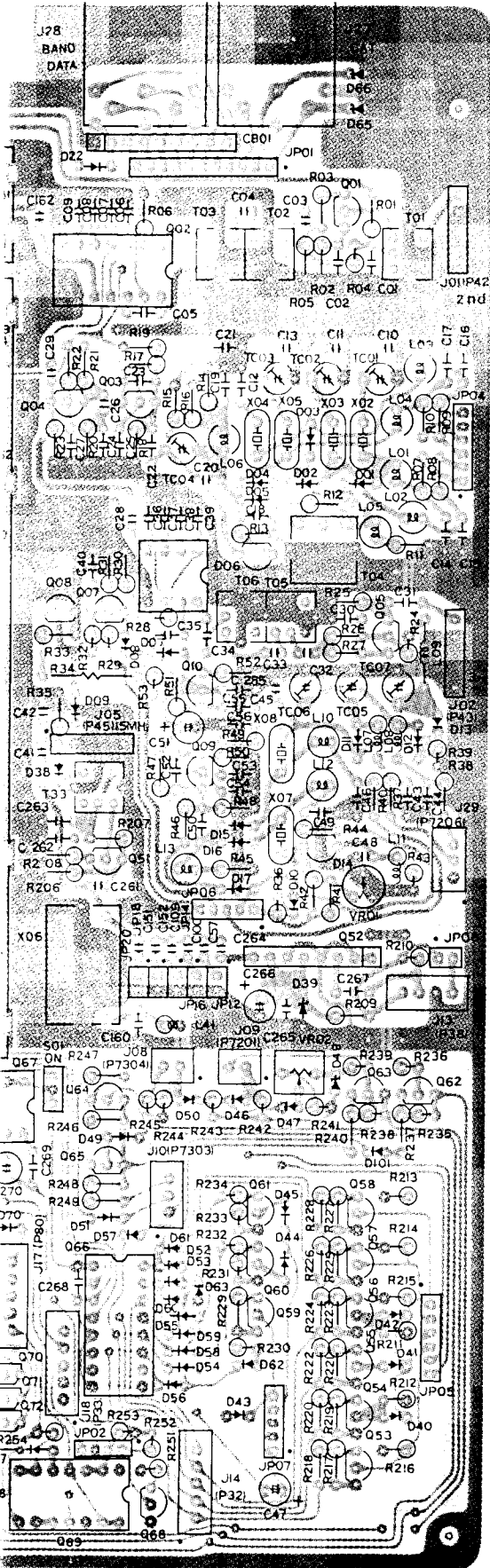
LOCAL UNIT PARTS LAYOUT



(Reverse View)

L UNIT PARTS LAYOUT

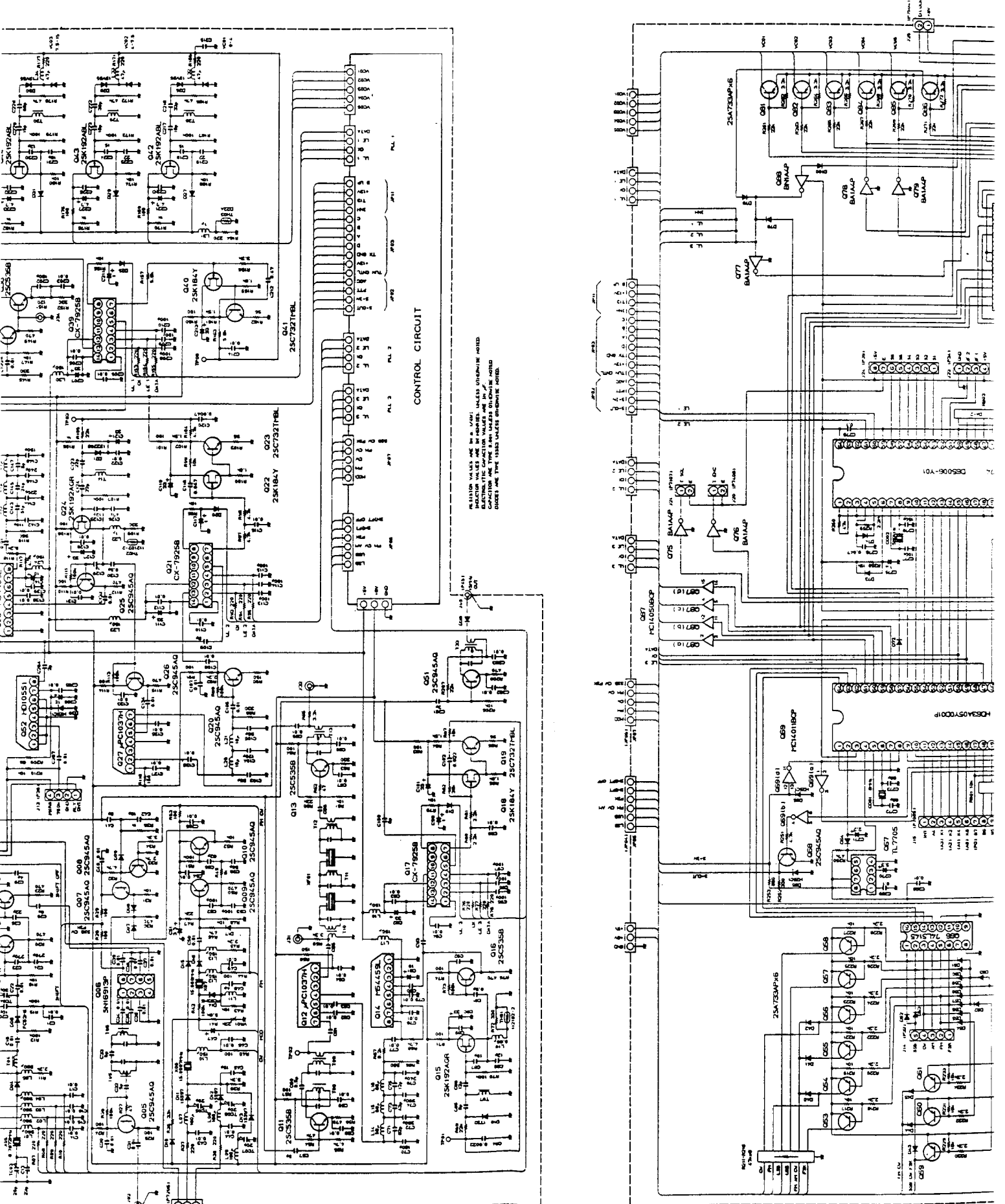
LOCAL UNIT VOLTAGE CHART (DC VOLT)



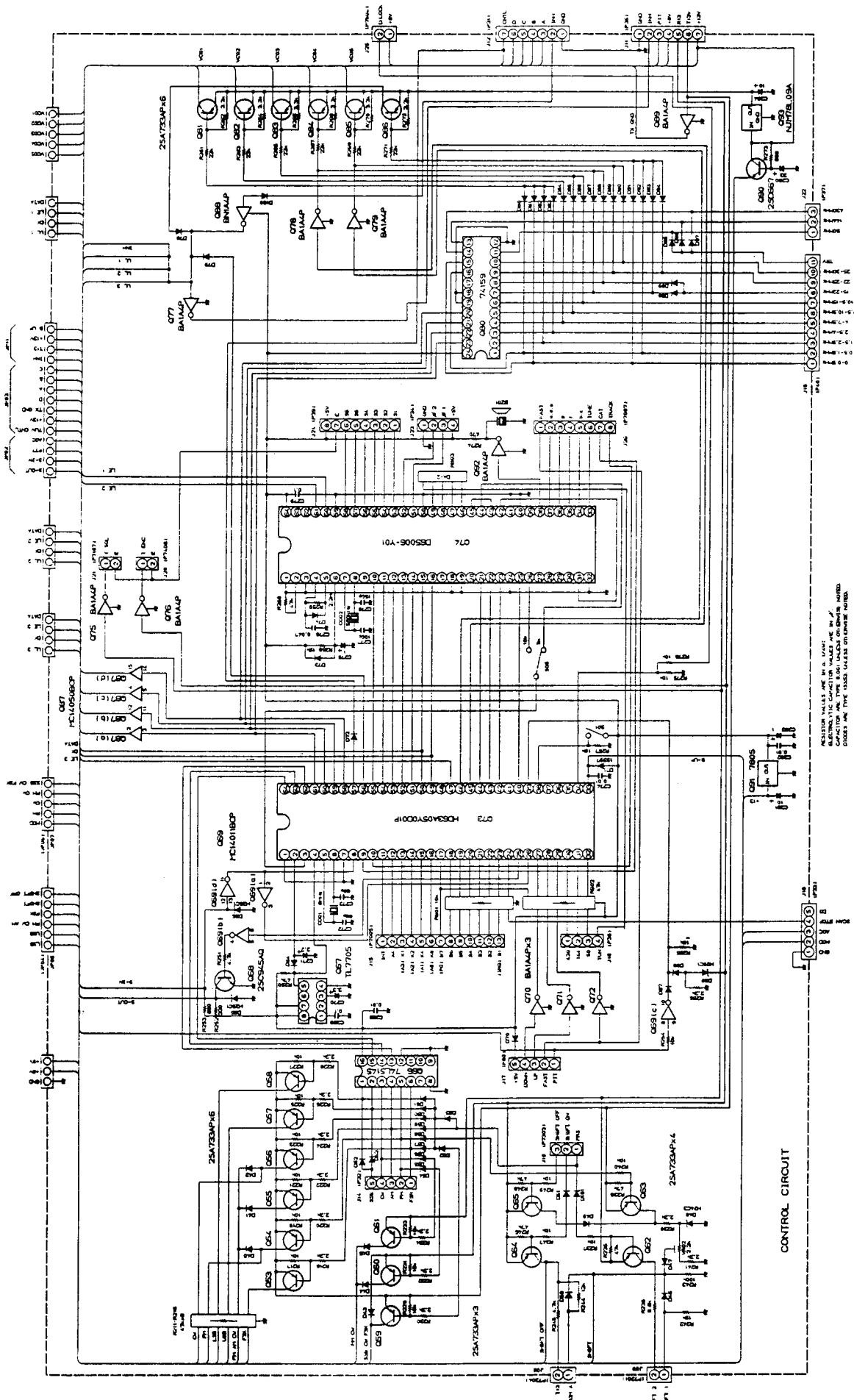
(Reverse View)

	E (S)	C (D)	B (G)	REMARKS
Q3001	2.15	7.65	1.40	
Q3003	1.07/1.07	7.68/7.68	1.87/1.79	RX/TX
Q3004	3.36	7.26	4.00	
Q3005	1.20/1.20	6.75/6.75	1.70/1.50	RX/TX
Q3007	2.04	11.77	2.67	
Q3008	0/0	0/2.67	0.7/0	RX/TX,MODE CW
Q3009	2.82/0	10.66/0	2.7/0	RX/TX,MODE CW
Q3010	0/5.14	0/10.45	0/5.76	RX/TX,MODE FM
Q3011	0.20	7.90	0.71	
Q3013	1.30	7.56	2.05	
Q3015	1.0	7.45	0	
Q3016	2.21	7.50	2.94	
Q3018	0.75	7.72	0.50	
Q3019	0.10	4.52	0.75	
Q3020	0.37	2.25	1.00	
Q3022	0.80	7.63	0.58	
Q3023	0.10	4.50	0.80	
Q3024	0.85	7.65	0	
Q3025	3.44	7.24	4.08	
Q3026	3.52	7.23	4.15	
Q3030	1.63	7.60	2.27	
Q3031	3.54	7.21	4.18	
Q3032	1.20	7.71	0.40	
Q3033	3.44	7.23	4.08	
Q3035	1.41	7.65	2.16	
Q3037	1.46	7.65	2.20	
Q3038	0.74	4.45	1.46	
Q3040	0.73	7.79	0.46	
Q3041	0.27	7.90	0.80	
Q3042	1.36	11.50	0	3.5MHz
Q3043	1.20	11.50	0	7MHz
Q3044	0.80	11.50	0	14MHz
Q3045	1.10	11.40	0	21MHz
Q3046	1.40	11.40	0	28MHz
Q3047	4.10	7.96	4.10	
Q3048	3.39	7.96	4.10	
Q3049	1.58	7.64	0	
Q3050	1.86	7.60	2.60	
Q3051	1.00	5.60	1.69	TRV ON
Q3053	12.20	12.20	11.50	MODE FSK
Q3054	12.30/12.30	11.59/11.49	11.68/11.58	RX/TX, MODE FM
Q3055	12.40/12.30	12.40/12.30	11.70/11.60	RX/TX, MODE AM
Q3056	12.30	12.20	11.60	MODE CW
Q3057	12.30	12.20	11.57	MODE USB
Q3058	12.30	12.20	11.58	MODE LSB
Q3059	12.30	12.20	11.58	
Q3060	0/13.06	0/13.02	0/12.30	RX/TX, MODE FM
Q3061	13.20/0	13.10/0	12.40/0	RX/TX, MODE CW
Q3062	13.20/0	13.20/0	12.50/0	RX/TX
Q3063	12.50	12.50	11.80	MODE FM
Q3064	0/13.00	0/13.00	0/12.40	RX/TX, TX SHIFT ON
Q3065	0/13.00	0/13.00	0/12.38	RX/TX, TX SHIFT OFF
Q3070	0	0	4.30	MIC DOWN
Q3071	0	0	4.30	MIC UP
Q3072	0	0	4.30	MIC FAST
Q3075	0/0	0/0	13.20/0	RX/TX, TONE SQL ON
Q3076	0/0	0/0	0/13.00	RX/TX, TONE ENC ON
Q3077	0/0	0/7.52	0/0	RX/TX
Q3081	12.20/12.20	12.32/12.20	11.64/11.54	RX/TX, 3.5MHz
Q3082	12.34/12.30	12.20/12.10	11.64/11.50	RX/TX, 7MHz
Q3083	12.34/12.30	12.20/12.10	11.60/11.50	RX/TX, 14MHz
Q3084	12.30/12.30	12.20/12.10	11.60/11.50	RX/TX, 21MHz
Q3085	12.30/12.30	12.20/12.10	11.60/11.50	RX/TX, 28MHz
Q3086	12.30/12.30	12.20/12.10	11.60/11.50	RX/TX, 1MHz
Q3088	4.90	11.56	10.93	1MHz
Q3089	0/0	0/0	0/13.10	RX/TX
Q3090	12.34	13.20	12.90	

LOCAL UNIT CIRCUIT DIAGRAM



T CIRCUIT DIAGRAM



RESISTOR VALUES ARE IN OHMS UNLESS OTHERWISE SPECIFIED.
CAPACITOR VALUES ARE IN MICROFARADS UNLESS OTHERWISE SPECIFIED.
THE VALUES IN PARENTHESES ARE THE VALUES IN THE ORIGINAL DRAWING.

CONTROL CIRCUIT

Make all measurements and adjustments while receiving in the CW mode, except where stated otherwise.

(1) 3rd Local Oscillator

Connect the RF voltmeter to J3002 and adjust T3005 and T3006 for maximum voltage (at least 30 mVrms).

(2) 2nd Local Level

Connect the RF voltmeter across J3001 (do not remove the plug) and adjust T3001, T3002 and T3003 for maximum RF (at least 40 mVrms).

(3) 2nd Local Frequency Check

Connect the frequency counter to pin 5 of Q3002 and confirm 30.030 MHz \pm 1 kHz.

(4) Carrier Oscillators

Make certain the SHIFT control is set to the 12 o'clock position. Connect the frequency counter to pin 5 of Q3006. Select each mode indicated in the following table, and adjust the indicated coil or trimmer for the indicated frequency on the counter \pm 10 Hz.

Mode	Adj. Point	Frequency (kHz)
CW	T3004	6784.100
LSB	TC3001	6786.600
USB	TC3002	6783.400
FSK	TC3003	6787.200

(5) Transmitter IF Shift

A 50-ohm dummy load must be connected to the ANT jack, as this step requires transmission for measurement and adjustment.

Set the TX SHIFT button OFF (out) and select the LSB mode. Set the TX SHIFT control to the 12 o'clock position. Connect the frequency counter to pin 5 of Q3006. Press the MOX button and adjust VR3002, if necessary, for 6786.6 kHz \pm 10 Hz on the counter. Now press the TX SHIFT button and adjust TC3004, if necessary, for the same indication on the counter.

(6) CW BFO Frequency

Select the CW mode and connect the frequency counter to pin 2 of Q3006. Set the PITCH selector and adjust the corresponding trimmer for the frequency indicated below (\pm 10 Hz).

Pitch	Adj. Point	Frequency (MHz)
800 Hz	TC3007	15.0008
700 Hz	TC3006	15.0007
600 Hz	TC3005	15.0006

(7) FM Carrier Frequency

A 50-ohm dummy load must be connected to the ANT jack, as this step requires transmission for measurement and adjustment.

Select the FM mode. With the frequency counter connected to pin 2 of Q3006, press the MOX button and adjust VR3001 for 15 MHz \pm 50 Hz.

(8) PLL-3 VCO

Tune the display to 14.2000.00. Connect the DC voltmeter to TP3001 and adjust T3007, if necessary, for 4.5 \pm 0.1V. Retune the display to 14.199.99 and check for 3 to 4V.

(9) 45 MHz Bandpass Filter

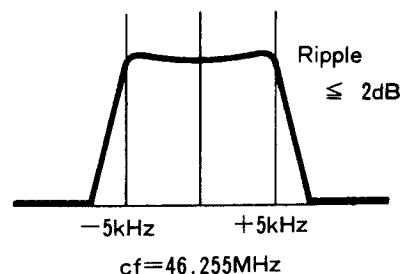
Tune to 14.250 MHz and connect the RF millivoltmeter TP3002. Adjust T3008 and T3009 for maximum RF (at least 60 mVrms).

(10) 15 MHz Reference TCXO

Connect the frequency counter to TP3002 and adjust the trimmer accessible through the hole in the TXCO housing for 45 MHz \pm 10 Hz.

(11) 46 MHz Bandpass Filter

Connect the tracking generator to J3031 and couple the spectrum analyzer to J3032. Adjust T3010-T3013 for the passband shown below (reducing injection level, if necessary, to avoid saturation).



T
T
T
T
V
V
T

LOCAL UNIT ALIGNMENT

(6) CW BFO Frequency

Select the CW mode and connect the frequency counter to pin 2 of Q3006. Set the PITCH selector and adjust the corresponding trimmer for the frequency indicated below (± 10 Hz).

Pitch	Adj. Point	Frequency (MHz)
800 Hz	TC3007	15.0008
700 Hz	TC3006	15.0007
600 Hz	TC3005	15.0006

(7) FM Carrier Frequency

A 50-ohm dummy load must be connected to the ANT jack, as this step requires transmission for measurement and adjustment.

Select the FM mode. With the frequency counter connected to pin 2 of Q3006, press the MOX button and adjust VR3001 for 15 MHz ± 50 Hz.

(8) PLL-3 VCO

Tune the display to 14.2000.00. Connect the DC voltmeter to TP3001 and adjust T3007, if necessary, for 4.5 ± 0.1 V. Retune the display to 14.199.99 and check for 3 to 4V.

(9) 45 MHz Bandpass Filter

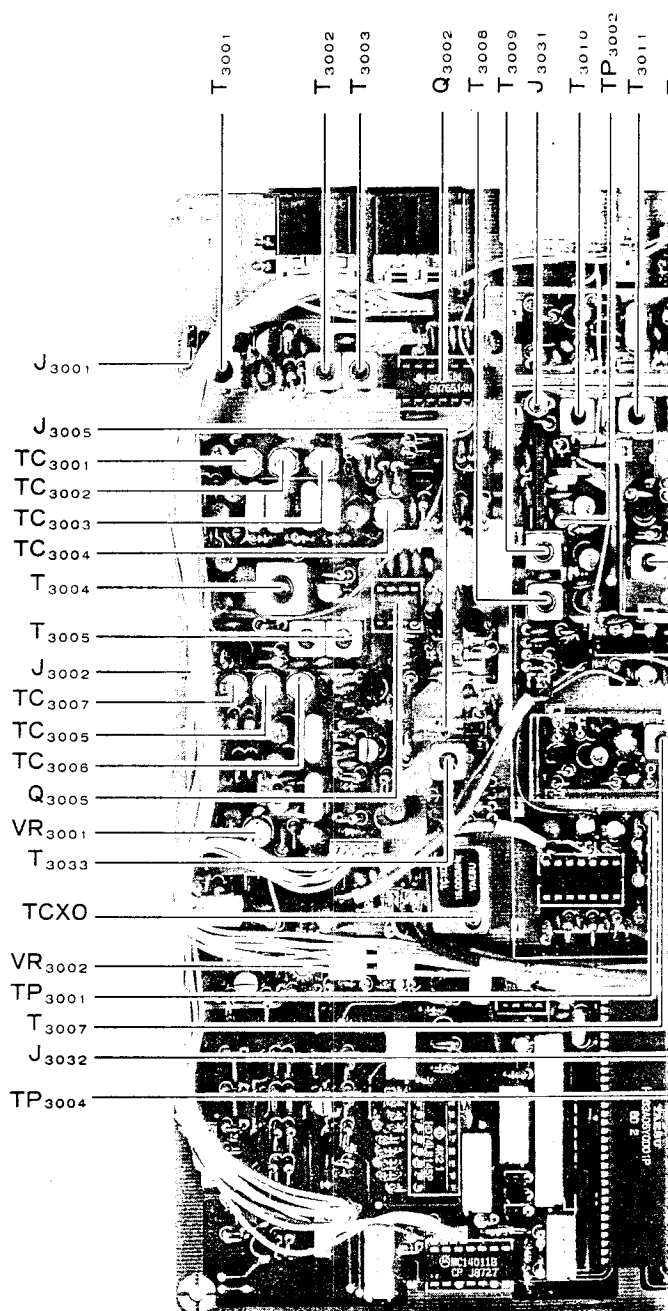
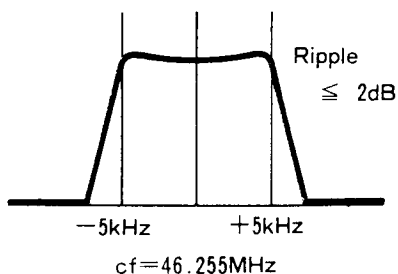
Tune to 14.250 MHz and connect the RF millivoltmeter TP3002. Adjust T3008 and T3009 for maximum RF (at least 60 mVrms).

(10) 15 MHz Reference TCXO

Connect the frequency counter to TP3002 and adjust the trimmer accessible through the hole in the TXCO housing for 45 MHz ± 10 Hz.

(11) 46 MHz Bandpass Filter

Connect the tracking generator to J3031 and couple the spectrum analyzer to J3032. Adjust T3010-T3013 for the passband shown below (reducing injection level, if necessary, to avoid saturation).

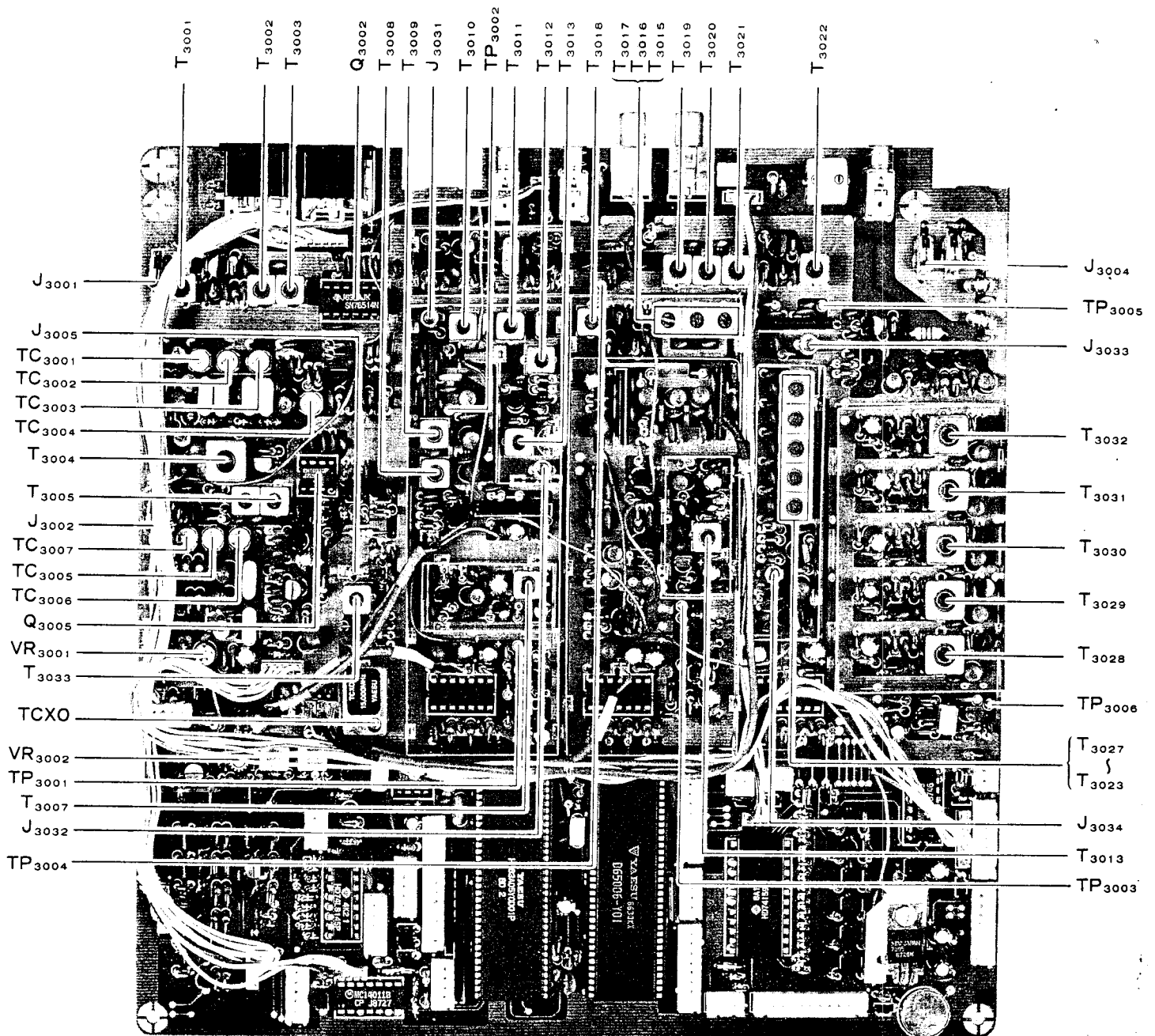


LOCAL UNIT

(12) PLL-2 VCO

Tune the display to 14.199.99. Connect the voltmeter to TP3003 and adjust T3004, if necessary, for 5.5 ± 0.1 V. Retune the display to 14.000.00 and check for 2.5 to 4.0V.

UNIT ALIGNMENT



LOCAL UNIT ALIGNMENT POINTS

(12) PLL-2 VCO

Tune the display to 14.199.99. Connect the DC voltmeter to TP3003 and adjust T3004, if necessary, for $5.5 \pm 0.1V$. Retune the display to 14.000.00 and check for 2.5 to 4.0V.

LOCAL UNIT ALIGNMENT

(13) 13 MHz Bandpass Filter

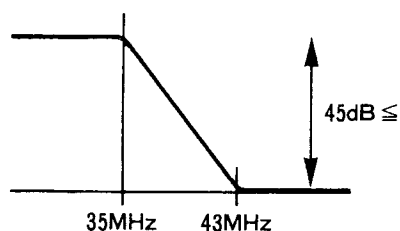
Tune to 14.250 MHz and connect the RF millivoltmeter to TP3004. Adjust T3015 through T3018 for maximum RF (at least 40 mVrms).

(14) 43 MHz Bandpass Filter

Tune to 14.250 MHz and connect the RF millivoltmeter to TP3005. Adjust T3019 through T3022 for maximum RF (at least 40 mVrms).

(15) Main Loop Lowpass Filter

Connect the tracking generator to J3033 and couple the spectrum analyzer to J3034. Adjust T3023 through T3027 for the roll-off shown (reducing injection level, if necessary, to avoid saturation).



(16) Main Loop VCOs

Set the display to 3.999.99. Connect the high-impedance DC voltmeter to TP3006 and adjust transformer T3028 for 6.0 \pm 0.1V. Retune the display to 0.000.00 and confirm 1 to 2V. Repeat the same procedure for the same voltages at the following frequencies:

<u>Display</u>	<u>Xfmr</u>	<u>Confirm</u>
7.499.99	T3029	4.000.00
14.999.99	T3030	7.500.00
21.999.99	T3031	15.000.00
29.999.99	T3032	22.000.00

Check that the voltage at TP3006 increases smoothly from 1.0 to about 6.5V when tuning from 0 to 7.499 MHz, 7.5 to 14.999 MHz, 15 to 21.999 MHz and 22 to 29.999 MHz.

(17) SSB Carrier Point Check (Transmit)

A 50-ohm dummy load and wattmeter must be connected to the ANT jack, as this step requires transmission for measurement and adjustment.

Tune to 14.200 MHz, USB mode. Connect the AF generator to the center pin of the MIC jack, and set for 5 mV output at 1 kHz. Press the MOX button and adjust the MIC gain control for 80W RF output.

Reduce the AF generator frequency until 20W RF output is obtained, and note the corresponding audio frequency. Now increase the AF frequency until 20W RF output is again obtained, and again note the corresponding audio frequency.

The lower frequency should be below 350 Hz, and the upper frequency should be above 2900 Hz. If not, perform procedures (4) and (5), and repeat this procedure.

Repeat the above in LSB mode.

(18) 1st Local Level Check

Tune to 14.200.00. Connect the RF millivoltmeter to J3004 (do not remove the plug) and confirm at least 100 mVrms.

(19) VHF/UHF Module Reference Level

Set the transceiver to the 50 MHz band. Connect the RF voltmeter to J3005 (don't remove the plug) and adjust T3033 for 150 mVrms.

LOCAL UNIT PARTS LIST

D3024	G2090118	DIODE	1SS97
D3025	G2090027	DIODE	1SS53
D3026	G2090161	DIODE	1SV55
D3027	G2090027	DIODE	1SS53
D3028	G2090161	DIODE	1SV55
D3029	G2090027	DIODE	1SS53
D3030	G2090161	DIODE	1SV55
D3031	G2090027	DIODE	1SS53
D3032	G2090161	DIODE	1SV55
D3033	G2090027	DIODE	1SS53
D3034	G2090161	DIODE	1SV55
D3035	G2090027	DIODE	1SS53
D3036	G2090118	DIODE	1SS97
D3037	G2090118	DIODE	1SS97
D3038	G2090027	DIODE	1SS53
D3039	G2090188	DIODE	HZ5C1
D3040	G2090027	DIODE	1SS53
D3041	G2090027	DIODE	1SS53
D3042	G2090027	DIODE	1SS53
D3043	G2090027	DIODE	1SS53
D3044	G2090027	DIODE	1SS53
D3045	G2090027	DIODE	1SS53
D3046	G2090027	DIODE	1SS53
D3047	G2090027	DIODE	1SS53
D3048	G2090226	DIODE	HZ4C3
D3049	G2090027	DIODE	1SS53
D3050	G2090027	DIODE	1SS53
D3051	G2090027	DIODE	1SS53
D3052	G2090027	DIODE	1SS53
D3053	G2090027	DIODE	1SS53
D3054	G2090027	DIODE	1SS53
D3055	G2090027	DIODE	1SS53
D3056	G2090027	DIODE	1SS53
D3057	G2090027	DIODE	1SS53
D3058	G2090027	DIODE	1SS53
D3059	G2090027	DIODE	1SS53
D3060	G2090027	DIODE	1SS53
D3061	G2090027	DIODE	1SS53
D3062	G2090027	DIODE	1SS53
D3063	G2090027	DIODE	1SS53
D3064	G2090027	DIODE	1SS53
D3065	G2090188	DIODE	HZ5C1
D3066	G2090188	DIODE	HZ5C1
D3067	G2090027	DIODE	1SS53
D3068	G2090027	DIODE	1SS53
D3069	G2090218	DIODE	HZ9C1
D3070	G2090027	DIODE	1SS53
D3071	G2090118	DIODE	1SS53
D3072	G2090027	DIODE	1SS53
D3073	G2090027	DIODE	1SS53
D3074	G2090027	DIODE	1SS53
D3075	G2090027	DIODE	1SS53
D3076	G2090027	DIODE	1SS53
D3077	G2090027	DIODE	1SS53
D3078	G2090027	DIODE	1SS53
D3079	G2090027	DIODE	1SS53
D3080	G2090027	DIODE	1SS53
D3081	G2090027	DIODE	1SS53
D3082	G2090027	DIODE	1SS53
D3083	G2090027	DIODE	1SS53
D3084	G2090027	DIODE	1SS53
D3085	G2090027	DIODE	1SS53
D3086	G2090027	DIODE	1SS53
D3087	G2090027	DIODE	1SS53
D3088	G2090027	DIODE	1SS53
D3089	G2090027	DIODE	1SS53
D3090	G2090027	DIODE	1SS53
D3091	G2090027	DIODE	1SS53
D3092	G2090027	DIODE	1SS53
D3093	G2090027	DIODE	1SS53
D3094	G2090027	DIODE	1SS53
D3095	G2090027	DIODE	1SS53
D3096	G2090027	DIODE	1SS53
D3097	G2090027	DIODE	1SS53
D3098	G2090027	DIODE	1SS53
D3100	G2090027	DIODE	1SS53
D3101	G2090027	DIODE	1SS53
D3102	G2090118	DIODE	1SS97
TH3001	G9090008	Thermistor	112102-2
TH3002	G9090008	Thermistor	112102-2
TH3003	G9090002	Thermistor	D22A
XF3001	H1102068	Crystal Filter	-46G2B2
X3001	H0102703	Crystal	HC-19/U
X3002	H0102556A	Crystal	HC-18/U
X3003	H0102700	Crystal	HC-18/U
X3004	H0102701	Crystal	HC-18/U
X3005	H0102702	Crystal	HC-18/U
X3006	H9500060	Crystal	H-GF1502
X3007	H0102554A	Crystal	HC-18/U
X3008	H0102553B	Crystal	HC-18/U
CO3001	H7900490	Ceramic Resonator	6MHz
CO3002	H7900460	Ceramic Resonator	580KHz
R3001	J02245101	Carbon Film Res.	100 Ohm
R3002	J02245471	Carbon Film Res.	470 Ohm
R3003	J02245470	Carbon Film Res.	47 Ohm
R3004	J02245223	Carbon Film Res.	22k Ohm
R3005	J02245103	Carbon Film Res.	10k Ohm
R3006	J02245101	Carbon Film Res.	100 Ohm
R3007	J02245221	Carbon Film Res.	220 Ohm
R3008	J02245221	Carbon Film Res.	220 Ohm
R3009	J02245221	Carbon Film Res.	220 Ohm
R3010	J02245221	Carbon Film Res.	220 Ohm
R3011	J02245222	Carbon Film Res.	2.2k Ohm
R3012	J02245562	Carbon Film Res.	5.6k Ohm
R3013	J02245104	Carbon Film Res.	100k Ohm
R3014	J02245473	Carbon Film Res.	47k Ohm
R3015	J02245104	Carbon Film Res.	100k Ohm
R3016	J02245471	Carbon Film Res.	470 Ohm
R3017	J02245223	Carbon Film Res.	22k Ohm
R3018	J02245103	Carbon Film Res.	10k Ohm
R3019	J02245101	Carbon Film Res.	100 Ohm
R3020	J02245471	Carbon Film Res.	470 Ohm
R3021	J02245104	Carbon Film Res.	100k Ohm
R3022	J02245101	Carbon Film Res.	100 Ohm
R3023	J02245471	Carbon Film Res.	470 Ohm
R3024	J02245101	Carbon Film Res.	100 Ohm
R3025	J02245101	Carbon Film Res.	100 Ohm
R3026	J02245104	Carbon Film Res.	100k Ohm
R3027	J02245470	Carbon Film Res.	47 Ohm

LOCAL UNIT PARTS LIST

R3028	J02245101	Carbon Film Res.	100 Ohm	1/4W	R3090	J02245151	Carbon Film Res.	150 Ohm	1/4W
R3029	J02245101	Carbon Film Res.	100 Ohm	1/4W	R3091	J02245101	Carbon Film Res.	100 Ohm	1/4W
R3030	J02245471	Carbon Film Res.	470 Ohm	1/4W	R3092	J02245222	Carbon Film Res.	2.2k Ohm	1/4W
R3031	J02245103	Carbon Film Res.	10k Ohm	1/4W	R3093	J02245221	Carbon Film Res.	220 Ohm	1/4W
R3032	J02245472	Carbon Film Res.	4.7k Ohm	1/4W	R3094	J02245221	Carbon Film Res.	220 Ohm	1/4W
R3033	J02245272	Carbon Film Res.	2.7k Ohm	1/4W	R3095	J02245221	Carbon Film Res.	220 Ohm	1/4W
R3034	J02245332	Carbon Film Res.	3.3k Ohm	1/4W	R3096	J02245103	Carbon Film Res.	10k Ohm	1/4W
R3035	J02245102	Carbon Film Res.	1k Ohm	1/4W	R3097	J02245472	Carbon Film Res.	4.7k Ohm	1/4W
R3036	J02245333	Carbon Film Res.	33k Ohm	1/4W	R3098	J02245472	Carbon Film Res.	4.7k Ohm	1/4W
R3037	J02245221	Carbon Film Res.	220 Ohm	1/4W	R3099	J02245102	Carbon Film Res.	10k Ohm	1/4W
R3038	J02245221	Carbon Film Res.	220 Ohm	1/4W	R3100	J02245182	Carbon Film Res.	1.8k Ohm	1/4W
R3039	J02245332	Carbon Film Res.	3.3k Ohm	1/4W	R3101	J02245101	Carbon Film Res.	100 Ohm	1/4W
R3040	J02245101	Carbon Film Res.	100 Ohm	1/4W	R3102	J02245152	Carbon Film Res.	1.5k Ohm	1/4W
R3041	J02245562	Carbon Film Res.	5.6k Ohm	1/4W	R3103	J02245560	Carbon Film Res.	56 Ohm	1/4W
R3042	J02245104	Carbon Film Res.	100k Ohm	1/4W	R3104	J02245472	Carbon Film Res.	4.7k Ohm	1/4W
R3043	J02245103	Carbon Film Res.	10k Ohm	1/4W	R3105	J02245223	Carbon Film Res.	22k Ohm	1/4W
R3044	J02245101	Carbon Film Res.	100 Ohm	1/4W	R3106	J02245102	Carbon Film Res.	1k Ohm	1/4W
R3045	J02245222	Carbon Film Res.	2.2k Ohm	1/4W	R3107	J02245104	Carbon Film Res.	100k Ohm	1/4W
R3046	J02245473	Carbon Film Res.	47k Ohm	1/4W	R3108	J02245101	Carbon Film Res.	100 Ohm	1/4W
R3047	J02245223	Carbon Film Res.	22k Ohm	1/4W	R3109	J02245331	Carbon Film Res.	330 Ohm	1/4W
R3048	J02245103	Carbon Film Res.	10k Ohm	1/4W	R3110	J02245101	Carbon Film Res.	100 Ohm	1/4W
R3049	J02245102	Carbon Film Res.	1k Ohm	1/4W	R3111	J02245104	Carbon Film Res.	100k Ohm	1/4W
R3050	J02245471	Carbon Film Res.	470 Ohm	1/4W	R3112	J02245471	Carbon Film Res.	470 Ohm	1/4W
R3051	J02245104	Carbon Film Res.	100k Ohm	1/4W	R3113	J02245104	Carbon Film Res.	100k Ohm	1/4W
R3052	J02245103	Carbon Film Res.	10k Ohm	1/4W	R3114	J02245101	Carbon Film Res.	100 Ohm	1/4W
R3053	J02245101	Carbon Film Res.	100 Ohm	1/4W	R3115	J02245471	Carbon Film Res.	470 Ohm	1/4W
R3054	J02245473	Carbon Film Res.	47k Ohm	1/4W	R3116	J02245151	Carbon Film Res.	150 Ohm	1/4W
R3055	J02245472	Carbon Film Res.	4.7k Ohm	1/4W	R3117	J02245472	Carbon Film Res.	4.7k Ohm	1/4W
R3056	J02245471	Carbon Film Res.	470 Ohm	1/4W	R3118	J02245822	Carbon Film Res.	8.2k Ohm	1/4W
R3057	J02245101	Carbon Film Res.	100 Ohm	1/4W	R3119	J02245561	Carbon Film Res.	560 Ohm	1/4W
R3058	J02245151	Carbon Film Res.	150 Ohm	1/4W	R3120	J02245151	Carbon Film Res.	150 Ohm	1/4W
R3059	J02245332	Carbon Film Res.	3.3k Ohm	1/4W	R3121	J02245223	Carbon Film Res.	22k Ohm	1/4W
R3060	J02245223	Carbon Film Res.	22k Ohm	1/4W	R3122	J02245103	Carbon Film Res.	10k Ohm	1/4W
R3061	J02245103	Carbon Film Res.	10k Ohm	1/4W	R3123	J02245470	Carbon Film Res.	470 Ohm	1/4W
R3062	J02245470	Carbon Film Res.	47 Ohm	1/4W	R3124	J02245471	Carbon Film Res.	470 Ohm	1/4W
R3063	J02245331	Carbon Film Res.	330 Ohm	1/4W	R3125	J02245101	Carbon Film Res.	100 Ohm	1/4W
R3064	J02245101	Carbon Film Res.	100 Ohm	1/4W	R3126	J02245101	Carbon Film Res.	100 Ohm	1/4W
R3065	J02245332	Carbon Film Res.	3.3k Ohm	1/4W	R3127	J02245471	Carbon Film Res.	470 Ohm	1/4W
R3066	J02245561	Carbon Film Res.	560 Ohm	1/4W	R3128	J02245104	Carbon Film Res.	100k Ohm	1/4W
R3067	J02245822	Carbon Film Res.	8.2k Ohm	1/4W	R3129	J02245473	Carbon Film Res.	47k Ohm	1/4W
R3068	J02245472	Carbon Film Res.	4.7k Ohm	1/4W	R3130	J02245101	Carbon Film Res.	100 Ohm	1/4W
R3069	J02245223	Carbon Film Res.	22k Ohm	1/4W	R3131	J02245471	Carbon Film Res.	470 Ohm	1/4W
R3070	J02245104	Carbon Film Res.	100k Ohm	1/4W	R3132	J02245104	Carbon Film Res.	100k Ohm	1/4W
R3071	J02245101	Carbon Film Res.	100 Ohm	1/4W	R3133	J02245101	Carbon Film Res.	100 Ohm	1/4W
R3072	J02245331	Carbon Film Res.	330 Ohm	1/4W	R3134	J02245471	Carbon Film Res.	470 Ohm	1/4W
R3073	J02245104	Carbon Film Res.	100k Ohm	1/4W	R3135	J02245103	Carbon Film Res.	10k Ohm	1/4W
R3074	J02245101	Carbon Film Res.	100 Ohm	1/4W	R3136	J02245151	Carbon Film Res.	150 Ohm	1/4W
R3075	J02245471	Carbon Film Res.	470 Ohm	1/4W	R3137	J02245223	Carbon Film Res.	22k Ohm	1/4W
R3076	J02245221	Carbon Film Res.	220 Ohm	1/4W	R3138	J02245103	Carbon Film Res.	10k Ohm	1/4W
R3077	J02245221	Carbon Film Res.	220 Ohm	1/4W	R3139	J02245470	Carbon Film Res.	470 Ohm	1/4W
R3078	J02245221	Carbon Film Res.	220 Ohm	1/4W	R3140	J02245471	Carbon Film Res.	470 Ohm	1/4W
R3079	J02245103	Carbon Film Res.	10k Ohm	1/4W	R3141	J02245101	Carbon Film Res.	100 Ohm	1/4W
R3080	J02245222	Carbon Film Res.	2.2k Ohm	1/4W	R3142	J02245103	Carbon Film Res.	10k Ohm	1/4W
R3081	J02245222	Carbon Film Res.	2.2k Ohm	1/4W	R3143	J02245151	Carbon Film Res.	150 Ohm	1/4W
R3082	J02245393	Carbon Film Res.	39k Ohm	1/4W	R3144	J02245332	Carbon Film Res.	3.3k Ohm	1/4W
R3083	J02245101	Carbon Film Res.	100 Ohm	1/4W	R3145	J02245331	Carbon Film Res.	330 Ohm	1/4W
R3084	J02245152	Carbon Film Res.	1.5k Ohm	1/4W	R3146	J02245223	Carbon Film Res.	22k Ohm	1/4W
R3085	J02245182	Carbon Film Res.	1.8k Ohm	1/4W	R3147	J02245103	Carbon Film Res.	10k Ohm	1/4W
R3086	J02245560	Carbon Film Res.	56 Ohm	1/4W	R3148	J02245101	Carbon Film Res.	100 Ohm	1/4W
R3087	J02245103	Carbon Film Res.	10k Ohm	1/4W	R3149	J02245471	Carbon Film Res.	470 Ohm	1/4W
R3088	J02245331	Carbon Film Res.	330 Ohm	1/4W	R3150	J02245102	Carbon Film Res.	1k Ohm	1/4W
R3089	J02245104	Carbon Film Res.	100k Ohm	1/4W	R3151	J02245121	Carbon Film Res.	120 Ohm	1/4W

LOCAL UNIT PARTS LIST

R3152	J02245331	Carbon Film Res.	330 Ohm	1/4W	R3214	J02245473	Carbon Film Res.	47k Ohm	1/4W
R3153	J02245291	Carbon Film Res.	220 Ohm	1/4W	R3215	J02245473	Carbon Film Res.	47k Ohm	1/4W
R3154	J02245221	Carbon Film Res.	220 Ohm	1/4W	R3216	J02245473	Carbon Film Res.	47k Ohm	1/4W
R3155	J02245231	Carbon Film Res.	220 Ohm	1/4W	R3217	J02245103	Carbon Film Res.	10k Ohm	1/4W
R3156	J02245103	Carbon Film Res.	10k Ohm	1/4W	R3218	J02245222	Carbon Film Res.	2.2k Ohm	1/4W
R3157	J02245562	Carbon Film Res.	5.6k Ohm	1/4W	R3219	J02245103	Carbon Film Res.	10k Ohm	1/4W
R3158	J02245332	Carbon Film Res.	3.3k Ohm	1/4W	R3220	J02245222	Carbon Film Res.	2.2k Ohm	1/4W
R3159	J02245182	Carbon Film Res.	1.8k Ohm	1/4W	R3221	J02245103	Carbon Film Res.	10k Ohm	1/4W
R3160	J02245101	Carbon Film Res.	100 Ohm	1/4W	R3222	J02245222	Carbon Film Res.	2.2k Ohm	1/4W
R3161	J02245152	Carbon Film Res.	1.5k Ohm	1/4W	R3223	J02245103	Carbon Film Res.	10k Ohm	1/4W
R3162	J02245560	Carbon Film Res.	56 Ohm	1/4W	R3224	J02245222	Carbon Film Res.	2.2k Ohm	1/4W
R3163	J02245562	Carbon Film Res.	5.6k Ohm	1/4W	R3225	J02245103	Carbon Film Res.	10k Ohm	1/4W
R3164	J02245221	Carbon Film Res.	220 Ohm	1/4W	R3226	J02245222	Carbon Film Res.	2.2k Ohm	1/4W
R3165	J02245231	Carbon Film Res.	220 Ohm	1/4W	R3227	J02245103	Carbon Film Res.	10k Ohm	1/4W
R3166	J02245473	Carbon Film Res.	47k Ohm	1/4W	R3228	J02245222	Carbon Film Res.	2.2k Ohm	1/4W
R3167	J02245104	Carbon Film Res.	100k Ohm	1/4W	R3229	J02245103	Carbon Film Res.	10k Ohm	1/4W
R3168	J02245103	Carbon Film Res.	10k Ohm	1/4W	R3230	J02245222	Carbon Film Res.	2.2k Ohm	1/4W
R3169	J02245101	Carbon Film Res.	100 Ohm	1/4W	R3231	J02245103	Carbon Film Res.	10k Ohm	1/4W
R3170	J02245102	Carbon Film Res.	100 Ohm	1/4W	R3232	J02245222	Carbon Film Res.	2.2k Ohm	1/4W
R3171	J02245221	Carbon Film Res.	1k Ohm	1/4W	R3233	J02245103	Carbon Film Res.	10k Ohm	1/4W
R3172	J02245473	Carbon Film Res.	220 Ohm	1/4W	R3234	J02245222	Carbon Film Res.	2.2k Ohm	1/4W
R3173	J02245104	Carbon Film Res.	47k Ohm	1/4W	R3235	J02245473	Carbon Film Res.	47k Ohm	1/4W
R3174	J02245103	Carbon Film Res.	100k Ohm	1/4W	R3236	J02245682	Carbon Film Res.	6.8k Ohm	1/4W
R3175	J02245101	Carbon Film Res.	10k Ohm	1/4W	R3237	J02245103	Carbon Film Res.	10k Ohm	1/4W
R3176	J02245102	Carbon Film Res.	100 Ohm	1/4W	R3238	J02245473	Carbon Film Res.	47k Ohm	1/4W
R3177	J02245221	Carbon Film Res.	1k Ohm	1/4W	R3239	J02245222	Carbon Film Res.	2.2k Ohm	1/4W
R3178	J02245473	Carbon Film Res.	220 Ohm	1/4W	R3240	J02245103	Carbon Film Res.	10k Ohm	1/4W
R3179	J02245104	Carbon Film Res.	47k Ohm	1/4W	R3241	J02245222	Carbon Film Res.	2.2k Ohm	1/4W
R3180	J02245103	Carbon Film Res.	100k Ohm	1/4W	R3242	J02245153	Carbon Film Res.	15k Ohm	1/4W
R3181	J02245101	Carbon Film Res.	100 Ohm	1/4W	R3243	J02245123	Carbon Film Res.	100k Ohm	1/4W
R3182	J02245102	Carbon Film Res.	100 Ohm	1/4W	R3244	J02245472	Carbon Film Res.	12k Ohm	1/4W
R3183	J02245221	Carbon Film Res.	220 Ohm	1/4W	R3245	J02245472	Carbon Film Res.	4.7k Ohm	1/4W
R3184	J02245473	Carbon Film Res.	47k Ohm	1/4W	R3246	J02245473	Carbon Film Res.	47k Ohm	1/4W
R3185	J02245104	Carbon Film Res.	10k Ohm	1/4W	R3247	J02245103	Carbon Film Res.	10k Ohm	1/4W
R3186	J02245103	Carbon Film Res.	100k Ohm	1/4W	R3248	J02245473	Carbon Film Res.	47k Ohm	1/4W
R3187	J02245101	Carbon Film Res.	100 Ohm	1/4W	R3249	J02245103	Carbon Film Res.	10k Ohm	1/4W
R3188	J02245102	Carbon Film Res.	1k Ohm	1/4W	R3250	J02245472	Carbon Film Res.	4.7k Ohm	1/4W
R3189	J02245221	Carbon Film Res.	220 Ohm	1/4W	R3251	J02245331	Carbon Film Res.	330 Ohm	1/4W
R3190	J02245473	Carbon Film Res.	47k Ohm	1/4W	R3252	J02245681	Carbon Film Res.	680 Ohm	1/4W
R3191	J02245104	Carbon Film Res.	100k Ohm	1/4W	R3253	J02245103	Carbon Film Res.	10k Ohm	1/4W
R3192	J02245103	Carbon Film Res.	10k Ohm	1/4W	R3254	J02245103	Carbon Film Res.	10k Ohm	1/4W
R3193	J02245101	Carbon Film Res.	100 Ohm	1/4W	R3255	J02245103	Carbon Film Res.	10k Ohm	1/4W
R3194	J02245102	Carbon Film Res.	1k Ohm	1/4W	R3256	J02245222	Carbon Film Res.	2.2k Ohm	1/4W
R3195	J02245223	Carbon Film Res.	22k Ohm	1/4W	R3257	J02245103	Carbon Film Res.	10k Ohm	1/4W
R3196	J02245471	Carbon Film Res.	470 Ohm	1/4W	R3258	J02245153	Carbon Film Res.	15k Ohm	1/4W
R3197	J02245101	Carbon Film Res.	100 Ohm	1/4W	R3259	J02245225	Carbon Film Res.	2.2M Ohm	1/4W
R3198	J02245391	Carbon Film Res.	390 Ohm	1/4W	R3260	J02245473	Carbon Film Res.	47k Ohm	1/4W
R3199	J02245102	Carbon Film Res.	1k Ohm	1/4W	R3261	J02245223	Carbon Film Res.	22k Ohm	1/4W
R3200	J02245103	Carbon Film Res.	10k Ohm	1/4W	R3262	J02245332	Carbon Film Res.	3.3k Ohm	1/4W
R3201	J02245101	Carbon Film Res.	100 Ohm	1/4W	R3263	J02245223	Carbon Film Res.	22k Ohm	1/4W
R3202	J02245471	Carbon Film Res.	470 Ohm	1/4W	R3264	J02245332	Carbon Film Res.	3.3k Ohm	1/4W
R3203	J02245104	Carbon Film Res.	100k Ohm	1/4W	R3265	J02245223	Carbon Film Res.	22k Ohm	1/4W
R3204	J02245101	Carbon Film Res.	100 Ohm	1/4W	R3266	J02245332	Carbon Film Res.	3.3k Ohm	1/4W
R3205	J02245471	Carbon Film Res.	470 Ohm	1/4W	R3267	J02245223	Carbon Film Res.	22k Ohm	1/4W
R3206	J02245103	Carbon Film Res.	10k Ohm	1/4W	R3268	J02245332	Carbon Film Res.	3.3k Ohm	1/4W
R3207	J02245223	Carbon Film Res.	22k Ohm	1/4W	R3269	J02245223	Carbon Film Res.	22k Ohm	1/4W
R3208	J02245471	Carbon Film Res.	470 Ohm	1/4W	R3270	J02245332	Carbon Film Res.	3.3k Ohm	1/4W
R3209	J02245680	Carbon Film Res.	680 Ohm	1/4W	R3271	J02245223	Carbon Film Res.	22k Ohm	1/4W
R3210	J02245103	Carbon Film Res.	10k Ohm	1/4W	R3272	J02245332	Carbon Film Res.	3.3k Ohm	1/4W
R3211	J02245473	Carbon Film Res.	47k Ohm	1/4W	R3273	J02245681	Carbon Film Res.	680 Ohm	1/4W
R3212	J02245473	Carbon Film Res.	47k Ohm	1/4W	R3274	J02245471	Carbon Film Res.	470 Ohm	1/4W
R3213	J02245473	Carbon Film Res.	47k Ohm	1/4W	R3275	J02245103	Carbon Film Res.	10k Ohm	1/4W

LOCAL UNIT PARTS LIST

Part No.	Description	QTY	Unit	Value	Material	Part No.	Description	QTY	Unit	Value	Material
R3276	J02245103		1/4W	10k Ohm	Carbon Film Res.	C3054	K13179008				Ceramic Cap.
RB3001	J40900044			7 x 10k Ohm	Block Res.	C3055	K02179017				Ceramic Cap.
RB3002	J40900053			7 x 47k Ohm	Block Res.	C3056	K02175560				Ceramic Cap.
RB3003	J40900023			DA-2	Block Res.	C3057	K00172050				Ceramic Cap.
VR3001	J51745223			22k Ohm	Potentiometer	C3058	K13179008				Ceramic Cap.
VR3002	J51769222			2.2k Ohm	Potentiometer	C3059	K13179008				Ceramic Cap.
C3001	K13179008		50V	0.01uF	Ceramic Cap.	C3060	K00179001				Ceramic Cap.
C3002	K13179008		50V	0.01uF	Ceramic Cap.	C3061	K12171102				Ceramic Cap.
C3003	K00175150		50V	15pF	Ceramic Cap.	C3062	K13179008				Ceramic Cap.
C3004	K00175470		50V	47pF	Ceramic Cap.	C3063	K13179008				Ceramic Cap.
C3005	K13179008		50V	0.01uF	Ceramic Cap.	C3064	K12171102				Ceramic Cap.
C3006	K13179008		50V	0.01uF	Ceramic Cap.	C3065	K12171102				Ceramic Cap.
C3007	K13179008		50V	0.01uF	Ceramic Cap.	C3066	K12171102				Ceramic Cap.
C3008	K13179008		50V	0.01uF	Ceramic Cap.	C3067	K13179008				Ceramic Cap.
C3009	K13179008		50V	0.01uF	Ceramic Cap.	C3068	K13179008				Ceramic Cap.
C3010	K02179009		50V	0.01uF	Ceramic Cap.	C3069	K13179008				Ceramic Cap.
C3011	K02179009		50V	22pF	Ceramic Cap.	C3070	K00175181				Ceramic Cap.
C3012	K02175390		50V	39pF	Ceramic Cap.	C3071	K00175820				Ceramic Cap.
C3013	K02179009		50V	22pF	Ceramic Cap.	C3072	K00179022				Ceramic Cap.
C3014	K13179008		50V	0.01uF	Ceramic Cap.	C3073	K00179009				Ceramic Cap.
C3015	K13179008		50V	0.01uF	Ceramic Cap.	C3074	K00175391				Ceramic Cap.
C3016	K13179008		50V	0.01uF	Ceramic Cap.	C3075	K00175120				Ceramic Cap.
C3017	K13179008		50V	0.01uF	Ceramic Cap.	C3076	K00179020				Ceramic Cap.
C3018	K13179008		50V	0.01uF	Ceramic Cap.	C3077	K13179008				Ceramic Cap.
C3019	K13179008		50V	0.01uF	Ceramic Cap.	C3078	K13179008				Ceramic Cap.
C3020	K02173100		50V	0.01uF	Ceramic Cap.	C3079	K13179008				Ceramic Cap.
C3021	K13179008		50V	10pF	Ceramic Cap.	C3080	K12171102				Ceramic Cap.
C3022	K13179008		50V	0.01uF	Ceramic Cap.	C3081	K40129004				Al Electro Cap.
C3023	K02179027		50V	0.01uF	Ceramic Cap.	C3082	K40129008				Al Electro Cap.
C3024	K02179027		50V	270pF	Ceramic Cap.	C3083	K13179008				Ceramic Cap.
C3025	K13179008		50V	270pF	Ceramic Cap.	C3084	K19149005				Ceramic Cap.
C3026	K00175220		50V	22pF	Ceramic Cap.	C3085	K05173080				Ceramic Cap.
C3027	K13179008		50V	0.01uF	Ceramic Cap.	C3086	K06175120				Ceramic Cap.
C3028	K00173060		50V	6pF	Ceramic Cap.	C3087	K05173100				Ceramic Cap.
C3029	K00172040		50V	4pF	Ceramic Cap.	C3088	K02175120				Ceramic Cap.
C3030	K13179008		50V	0.01uF	Ceramic Cap.	C3089	K12171102				Ceramic Cap.
C3031	K13179008		50V	0.01uF	Ceramic Cap.	C3090	K40129008				Al Electro Cap.
C3032	K00172050		50V	5pF	Ceramic Cap.	C3091	K02172059				Ceramic Cap.
C3033	K00172050		50V	5pF	Ceramic Cap.	C3092	K12171102				Ceramic Cap.
C3034	K13179008		50V	0.01uF	Ceramic Cap.	C3093	K12171102				Ceramic Cap.
C3035	K13179008		50V	0.01uF	Ceramic Cap.	C3094	K13179008				Ceramic Cap.
C3036	K13179008		50V	0.01uF	Ceramic Cap.	C3095	K10176101				Ceramic Cap.
C3037	K13179008		50V	0.01uF	Ceramic Cap.	C3096	K10176101				Ceramic Cap.
C3038	K13179008		50V	0.01uF	Ceramic Cap.	C3097	K10176101				Ceramic Cap.
C3039	K13179008		50V	0.01uF	Ceramic Cap.	C3098	K19149013				Ceramic Cap.
C3040	K13179008		50V	0.01uF	Ceramic Cap.	C3099	K40179013				Al Electro Cap.
C3041	K00173080		50V	8pF	Ceramic Cap.	C3100	K00173080				Ceramic Cap.
C3042	K00175180		50V	18pF	Ceramic Cap.	C3101	K40129008				Al Electro Cap.
C3043	K13179008		50V	0.01uF	Ceramic Cap.	C3102	K19149017				Ceramic Cap.
C3044	K13179008		50V	0.01uF	Ceramic Cap.	C3103	K00175560				Ceramic Cap.
C3045	K02175150		50V	15pF	Ceramic Cap.	C3104	K00175121				Ceramic Cap.
C3046	K13179008		50V	0.01uF	Ceramic Cap.	C3105	K00175560				Ceramic Cap.
C3047	K40179013		50V	1uF	Al Electro Cap.	C3106	K13179008				Ceramic Cap.
C3048	K06172040		50V	4pF	Ceramic Cap.	C3107	K13179008				Ceramic Cap.
C3049	K13179008		50V	0.01uF	Ceramic Cap.	C3108	K13179008				Ceramic Cap.
C3050	K13179008		50V	0.01uF	Ceramic Cap.	C3109	K00173080				Ceramic Cap.
C3051	K40179011		50V	3.3uF	Al Electro Cap.	C3110	K40129008				Al Electro Cap.
C3052	K06175101		50V	100pF	Ceramic Cap.	C3111	K40129008				Ceramic Cap.
C3053	K06175101		50V	100pF	Ceramic Cap.	C3112	K13179008				Ceramic Cap.
						C3113	K10176101				Ceramic Cap.
						C3114	K10176101				Ceramic Cap.
						C3115	K10176101				Ceramic Cap.

LOCAL UNIT PARTS LIST

C3116	K19149013	Ceramic Cap.	0.01uF	25V	Sr	C3179	K00175330	Ceramic Cap.	33pF	50V	SL
C3117	K40179013	Al Electro Cap.	1uF	50V	Sr	C3180	K13179008	Ceramic Cap.	0.01uF	50V	F
C3118	K19149021	Ceramic Cap.	0.047uF	25V	Sr	C3181	K13179008	Ceramic Cap.	0.01uF	50V	F
C3120	K19149009	Ceramic Cap.	0.0047uF	25V	Sr	C3182	K13179008	Ceramic Cap.	0.01uF	50V	F
C3121	K40129008	Al Electro Cap.	33uF	16V	F	C3183	K13179008	Ceramic Cap.	0.01uF	50V	F
C3122	K13179008	Ceramic Cap.	0.01uF	50V	F	C3184	K12171102	Ceramic Cap.	0.001uF	50V	E
C3123	K06175220	Ceramic Cap.	22pF	50V	UJ	C3185	K13179008	Ceramic Cap.	0.01uF	50V	F
C3124	K06175220	Ceramic Cap.	22pF	50V	UJ	C3186	K13179008	Ceramic Cap.	0.01uF	50V	F
C3125	K05175120	Ceramic Cap.	12pF	50V	RH	C3187	K13179008	Ceramic Cap.	0.01uF	50V	F
C3126	K05175470	Ceramic Cap.	47pF	50V	RH	C3188	K00173080	Ceramic Cap.	8pF	50V	F
C3127	K40129008	Al Electro Cap.	33uF	16V	F	C3189	K00172030	Ceramic Cap.	3pF	50V	CH
C3128	K13179008	Ceramic Cap.	0.01uF	50V	F	C3190	K02179006	Ceramic Cap.	24pF	50V	SL
C3129	K02179001	Ceramic Cap.	1pF	50V	CK	C3191	K00173080	Ceramic Cap.	8pF	50V	SL
C3130	K02172059	Ceramic Cap.	0.5pF	50V	CK	C3192	K00175220	Ceramic Cap.	22pF	50V	SL
C3131	K13179008	Ceramic Cap.	0.01uF	50V	F	C3193	K00173100	Ceramic Cap.	10pF	50V	SL
C3132	K13179008	Ceramic Cap.	0.01uF	50V	F	C3194	K00175270	Ceramic Cap.	27pF	50V	SL
C3133	K13179008	Ceramic Cap.	0.01uF	50V	F	C3195	K00172050	Ceramic Cap.	5pF	50V	SL
C3134	K13179008	Ceramic Cap.	0.01uF	50V	F	C3196	K00175270	Ceramic Cap.	27pF	50V	SL
C3135	K13179008	Ceramic Cap.	0.01uF	50V	F	C3197	K00179001	Ceramic Cap.	0.5pF	50V	SL
C3136	K13179008	Ceramic Cap.	0.01uF	50V	F	C3198	K00175120	Ceramic Cap.	12pF	50V	SL
C3137	K13179008	Ceramic Cap.	0.01uF	50V	F	C3199	K13179008	Ceramic Cap.	0.01uF	50V	F
C3138	K13179008	Ceramic Cap.	0.01uF	50V	F	C3200	K13179008	Ceramic Cap.	0.01uF	50V	F
C3139	K13179008	Ceramic Cap.	0.01uF	50V	F	C3201	K13179008	Ceramic Cap.	180pF	50V	F
C3140	K40129004	Al Electro Cap.	10uF	16V	F	C3202	K10176181	Ceramic Cap.	0.01uF	50V	F
C3141	K13179008	Ceramic Cap.	0.01uF	50V	F	C3203	K13179008	Ceramic Cap.	0.01uF	50V	B
C3142	K00179015	Ceramic Cap.	110pF	50V	SL	C3204	K13179008	Ceramic Cap.	0.01uF	50V	F
C3143	K00179010	Ceramic Cap.	51pF	50V	SL	C3205	K13179008	Ceramic Cap.	0.01uF	50V	F
C3144	K00175221	Ceramic Cap.	220pF	50V	SL	C3206	K13179008	Ceramic Cap.	0.01uF	50V	F
C3145	K00179006	Ceramic Cap.	24pF	50V	SL	C3207	K40129008	Al Electro Cap.	33uF	16V	B
C3146	K00179020	Ceramic Cap.	240pF	50V	SL	C3208	K10176101	Ceramic Cap.	100pF	50V	B
C3147	K00172050	Ceramic Cap.	5pF	50V	SL	C3209	K10176101	Ceramic Cap.	100pF	50V	B
C3148	K00175151	Ceramic Cap.	150pF	50V	SL	C3210	K10176101	Ceramic Cap.	1uF	50V	B
C3149	K13179008	Ceramic Cap.	0.01uF	50V	F	C3211	K40179013	Al Electro Cap.	0.47uF	20V	Sr
C3150	K13179008	Ceramic Cap.	0.01uF	50V	F	C3212	K54200012	Film Cap.	33uF	16V	E
C3151	K00173060	Ceramic Cap.	6pF	50V	SL	C3213	K40129008	Ceramic Cap.	0.01uF	25V	UJ
C3152	K00173080	Ceramic Cap.	8pF	50V	SL	C3214	K19149013	Ceramic Cap.	0.001uF	50V	UJ
C3153	K13179008	Ceramic Cap.	0.01uF	50V	F	C3215	K12171102	Ceramic Cap.	33pF	50V	UJ
C3154	K13179008	Ceramic Cap.	0.01uF	50V	F	C3216	K06175330	Ceramic Cap.	18pF	50V	UJ
C3155	K00172020	Ceramic Cap.	2pF	50V	SL	C3217	K06175180	Ceramic Cap.	15pF	50V	UJ
C3156	K00172020	Ceramic Cap.	2pF	50V	SL	C3218	K06175150	Ceramic Cap.	22pF	50V	UJ
C3157	K00175220	Ceramic Cap.	22pF	50V	SL	C3219	K06175220	Ceramic Cap.	0.001uF	50V	E
C3158	K13179008	Ceramic Cap.	0.01uF	50V	F	C3220	K12171102	Ceramic Cap.	4.7uF	25V	UJ
C3159	K13179008	Ceramic Cap.	0.01uF	50V	F	C3221	K40149001	Al Electro Cap.	30pF	50V	UJ
C3160	K13179008	Ceramic Cap.	0.01uF	50V	F	C3222	K06179006	Ceramic Cap.	18pF	50V	UJ
C3161	K12171102	Ceramic Cap.	0.001uF	50V	E	C3223	K06175180	Ceramic Cap.	15pF	50V	UJ
C3162	K12171102	Ceramic Cap.	0.001uF	50V	E	C3224	K06175150	Ceramic Cap.	22pF	50V	UJ
C3163	K00173080	Ceramic Cap.	8pF	50V	SL	C3225	K06175220	Ceramic Cap.	0.001uF	50V	E
C3164	K00172020	Ceramic Cap.	2pF	50V	SL	C3226	K12171102	Ceramic Cap.	4.7uF	25V	UJ
C3165	K02173070	Ceramic Cap.	7pF	50V	CH	C3227	K40149001	Al Electro Cap.	68pF	50V	UJ
C3166	K02179009	Ceramic Cap.	22pF	50V	CH	C3228	K06175680	Ceramic Cap.	15pF	50V	UJ
C3167	K02175680	Ceramic Cap.	68pF	50V	CH	C3229	K06175150	Ceramic Cap.	12pF	50V	UJ
C3168	K12171102	Ceramic Cap.	0.001uF	50V	E	C3230	K06175120	Ceramic Cap.	18pF	50V	UJ
C3169	K00172010	Ceramic Cap.	1pF	50V	SL	C3231	K06175180	Ceramic Cap.	0.001uF	50V	E
C3170	K00172020	Ceramic Cap.	2pF	50V	SL	C3232	K12171102	Ceramic Cap.	4.7uF	25V	UJ
C3171	K12171102	Ceramic Cap.	0.001uF	50V	E	C3233	K40149001	Al Electro Cap.	47pF	50V	UJ
C3172	K12171102	Ceramic Cap.	0.001uF	50V	E	C3234	K06175470	Ceramic Cap.	15pF	50V	CH
C3173	K13179008	Ceramic Cap.	0.01uF	50V	F	C3235	K02175150	Ceramic Cap.	12pF	50V	UJ
C3174	K13179008	Ceramic Cap.	0.01uF	50V	F	C3236	K06175120	Ceramic Cap.	10pF	50V	UJ
C3175	K13179008	Ceramic Cap.	0.01uF	50V	F	C3237	K06173100	Ceramic Cap.	0.001uF	50V	UJ
C3176	K12171102	Ceramic Cap.	0.001uF	50V	F	C3238	K12171102	Ceramic Cap.	4.7uF	25V	E
C3177	K00172010	Ceramic Cap.	1pF	50V	SL	C3239	K40149001	Al Electro Cap.	47pF	50V	UJ
C3178	K02172010	Ceramic Cap.	1pF	50V	SL	C3240	K06175470	Ceramic Cap.	47pF	50V	UJ

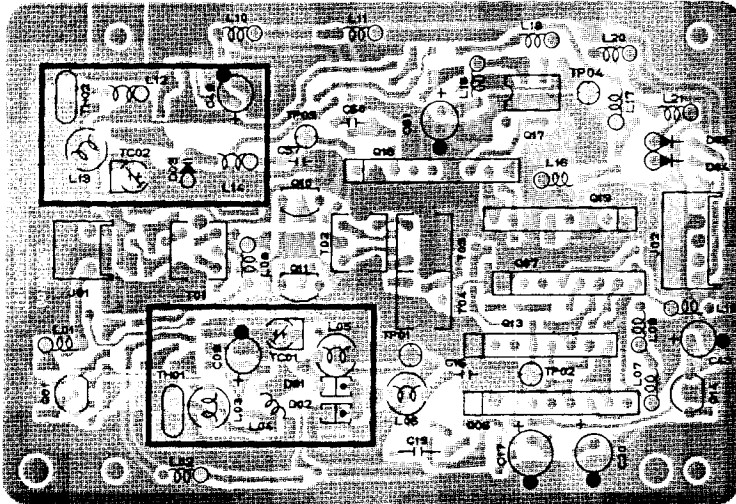
LOCAL UNIT PARTS LIST

C3241	K05175150	Ceramic Cap.	50V	RH	L3006	L1190039	RFC
C3242	K06175120	Ceramic Cap.	50V	UJ	L3007	L1190221	RFC
C3243	K02173080	Ceramic Cap.	50V	CH	L3008	L1190221	RFC
C3244	K12171102	Ceramic Cap.	50V	E	L3009	L1190221	RFC
C3245	K40149001	Al. Electro Cap.	25V	E	L3010	L1190020	RFC
C3246	K12171102	Ceramic Cap.	50V	CH	L3011	L0021206B	Coil
C3247	K02173080	Ceramic Cap.	50V	CH	L3012	L1190020	RFC
C3249	K13179008	Ceramic Cap.	50V	F	L3013	L1190020	RFC
C3250	K12171102	Ceramic Cap.	50V	F	L3014	L1190030	RFC
C3252	K00175270	Ceramic Cap.	50V	E	L3015	L1190031	RFC
C3253	K00175560	Ceramic Cap.	50V	SL	L3016	L1190031	RFC
C3254	K00175270	Ceramic Cap.	50V	SL	L3017	L1190220	RFC
C3255	K02179001	Ceramic Cap.	50V	SL	L3018	L1190220	RFC
C3256	K02172030	Ceramic Cap.	50V	CK	L3019	L1190004	RFC
C3257	K12171102	Ceramic Cap.	50V	E	L3020	L1190014	RFC
C3258	K12171102	Ceramic Cap.	50V	E	L3021	L1190014	RFC
C3259	K12171102	Ceramic Cap.	50V	E	L3022	L1190005	RFC
C3260	K12171102	Ceramic Cap.	50V	E	L3023	L1190220	RFC
C3261	K00172050	Ceramic Cap.	50V	SL	L3024	L1190220	RFC
C3262	K13179008	Ceramic Cap.	50V	F	L3025	L1190025	RFC
C3263	K13179008	Ceramic Cap.	50V	F	L3026	L1190029	RFC
C3264	K00172020	Ceramic Cap.	50V	F	L3027	L1190029	RFC
C3265	K13179008	Ceramic Cap.	50V	SL	L3028	L1190008	RFC
C3266	K40129004	Al. Electro Cap.	50V	F	L3029	L1190220	RFC
C3267	K13179008	Ceramic Cap.	16V	F	L3030	L1190220	RFC
C3268	K13179008	Ceramic Cap.	50V	F	L3031	L1190005	RFC
C3269	K19149025	Ceramic Cap.	25V	F	L3032	L1190029	RFC
C3270	K40179011	Al. Electro Cap.	50V	Sr	L3033	L1190029	RFC
C3271	K40179009	Al. Electro Cap.	50V	Sr	L3034	L1190029	RFC
C3272	K00175680	Ceramic Cap.	50V	SL	L3035	L1190029	RFC
C3273	K00175680	Ceramic Cap.	50V	SL	L3036	L1190029	RFC
C3274	K13179008	Ceramic Cap.	50V	F	L3037	L1190218	RFC
C3275	K40179013	Al. Electro Cap.	50V	F	L3038	L1190008	RFC
C3276	K19149021	Ceramic Cap.	25V	Sr	L3039	L0021410	Coil
C3277	K10176101	Ceramic Cap.	25V	B	L3040	L0021410	Coil
C3278	K10176151	Ceramic Cap.	50V	B	L3041	L1190222	RFC
C3279	K19149025	Ceramic Cap.	25V	Sr	L3042	L1190149	RFC
C3280	K40129008	Al. Electro Cap.	16V	Sr	T3001	L0021609	Coil
C3281	K40129004	Al. Electro Cap.	16V	F	T3002	L0021609	Coil
C3282	K13179008	Ceramic Cap.	50V	F	T3003	L0021609	Coil
C3283	K40179013	Al. Electro Cap.	50V	F	T3004	L0020332A	Coil
C3284	K40129004	Al. Electro Cap.	16V	F	T3005	L0021199	Coil
C3285	K13179008	Ceramic Cap.	50V	F	T3006	L0021199	Coil
C3286	K12171102	Ceramic Cap.	50V	E	T3007	L0020904	Coil
CB3001	K80000007	Block Cap.	8 X 0.01uF		T3008	L0021557	Coil
CB3002	K80000002	Block Cap.	6 X 0.01uF		T3009	L0021557	Coil
TC3001	K91000086	Trimmer Cap.	20pF	VCT51E117	T3010	L0020909	Coil
TC3002	K91000086	Trimmer Cap.	20pF	VCT51E117	T3011	L0020909	Coil
TC3003	K91000086	Trimmer Cap.	20pF	VCT51E117	T3012	L0020909	Coil
TC3004	K91000093	Trimmer Cap.	30pF	VCT51F	T3013	L0020909	Coil
TC3005	K91000086	Trimmer Cap.	20pF	VCT51E117	T3014	L0021554	Coil
TC3006	K91000086	Trimmer Cap.	20pF	VCT51E117	T3015	L0021912	Coil
TC3007	K91000086	Trimmer Cap.	20pF	VCT51E117	T3016	L0021912	Coil
L3001	L1190039	RFC			T3017	L0021912	Coil
L3002	L1190039	RFC			T3018	L0021912	Coil
L3003	L1190039	RFC			T3019	L0021234	Coil
L3004	L1190039	RFC			T3020	L0021234	Coil
L3005	L1190039	RFC			T3021	L0021234	Coil
					T3022	L0021234	Coil
					T3023	L0021555	Coil

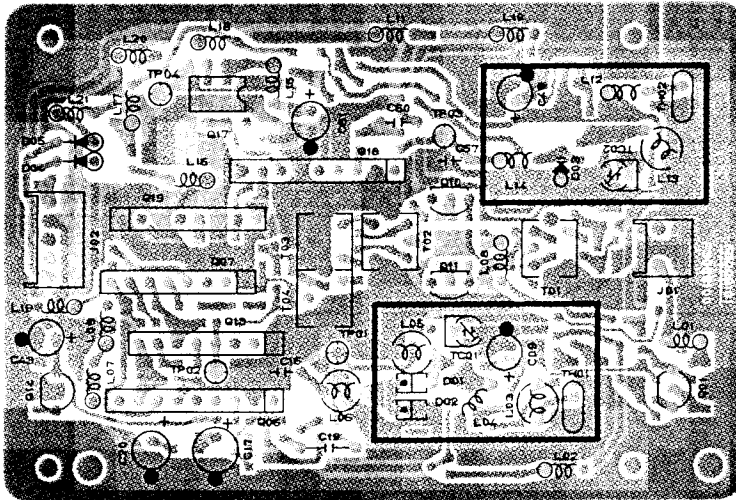
LOCAL UNIT PARTS LIST

T3024	L0021553	Coil	
T3025	L0021553	Coil	
T3026	L0021553	Coil	
T3027	L0021553	Coil	
T3028	L0021559	Coil	
T3029	L0021559	Coil	
T3030	L0021399	Coil	
T3031	L0021400	Coil	
T3032	L0021401	Coil	
T3033	L0020783	Coil	
BZ3001	M4290001	Buzzer	EFBRE-25D02
S3001	N6090064	Switch	SS912
S3002	N4090012	Switch	SPJ-22-A01
S3003	N4090012	Switch	SPJ-22-A01
S3004	N4090012	Switch	SPJ-22-A01
S3005	N6090064	Switch	SS912
J3001	P1090255	Connector	TMP-JA
J3002	P1090255	Connector	TMP-JA
J3003	P1090255	Connector	TMP-JA
J3004	P1090255	Connector	TMP-JA
J3005	P1090255	Connector	TMP-JA
J3006	P1090296	Connector	S-Q3097-02
J3007	P1090354	Connector	S-Q3097-04
J3008	P0090191	Connector	B02B-XH-A
J3009	P0090191	Connector	B02B-XH-A
J3010	P0090192	Connector	B03B-XH-A
J3011	P0090196	Connector	B02B-XH-A
J3012	P0090196	Connector	B03B-XH-A
J3013	P0090193	Connector	B07B-XH-A
J3014	P0090194	Connector	B04B-XH-A
J3015	P0090202	Connector	B05B-XH-A
J3016	P0090193	Connector	B13B-XH-A
J3017	P0090194	Connector	B04B-XH-A
J3018	P0090194	Connector	B05B-XH-A
J3019	P0090200	Connector	B05B-XH-A
J3020	P0090191	Connector	B11B-XH-A
J3021	P0090191	Connector	B02B-XH-A
J3022	P0090192	Connector	B03B-XH-A
J3023	P0090193	Connector	B03B-XH-A
J3024	P0090197	Connector	B04B-XH-A
J3025	P0090191	Connector	B08B-XH-A
J3026	P0090197	Connector	B02B-XH-A
J3027	P1090423	Connector	B08B-XH-A
J3028	P1090521	Connector	TCS4460-01-111
J3029	P0090192	Connector	TCS4490-01-111
J3030	P0090191	Connector	B03B-XH-A
J3031	P1090210	Connector	B02B-XH-A
J3032	P1090210	Connector	TMP-JV
J3033	P1090210	Connector	TMP-JV
J3034	P1090210	Connector	TMP-JV
Q5000050	Q5000050	Terminal Posts	TP-K
Q5000082	Q5000082	Terminal Posts	TP-N
BA3001	Q9000309	Lithium Battery	2L76-T2 (CR-1/3N)

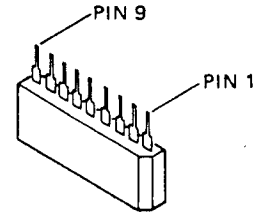
FEX-767-2 PLL UNIT PARTS LAYOUT



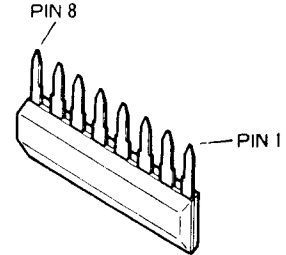
(Obverse view of "component" side)



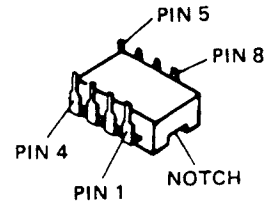
(Reverse view of "component" side)



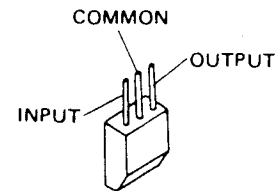
TC5081AP (Q2006,2018)



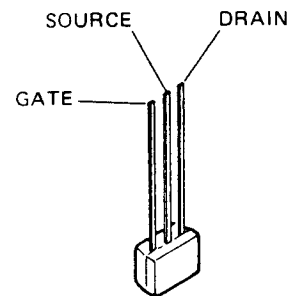
M54455L (Q2019)
M54459L (Q2007,2013)



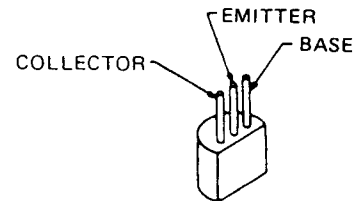
MC12017P (Q2017)



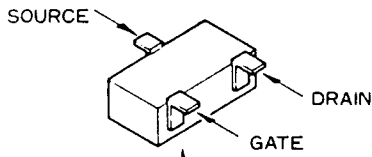
μ PC78L05J (Q2014)



2SK241Y (Q2010,2011)

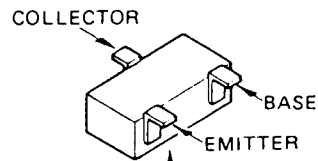


2SC2026 (Q2001)



Marked Surface

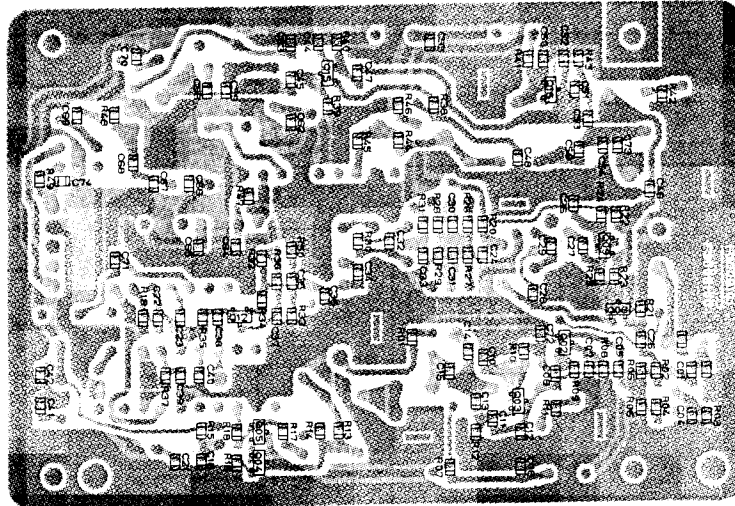
2SK210GR (YG)
(Q2002,2003,2008,
2015,2016)



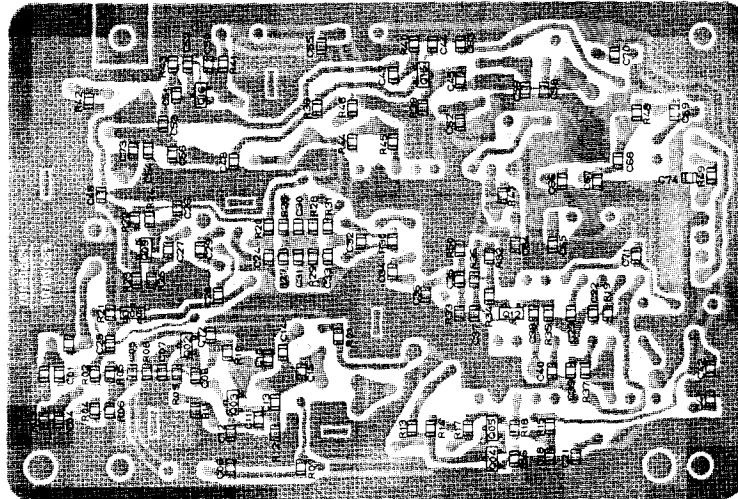
Marked Surface

2SC2620 (QB)
(Q2009,2012)
2SC2712GR (LG)
(Q2004,2005)

FEX-767-2 PLL UNIT PARTS LAYOUT



(Obverse view of "chip" side)

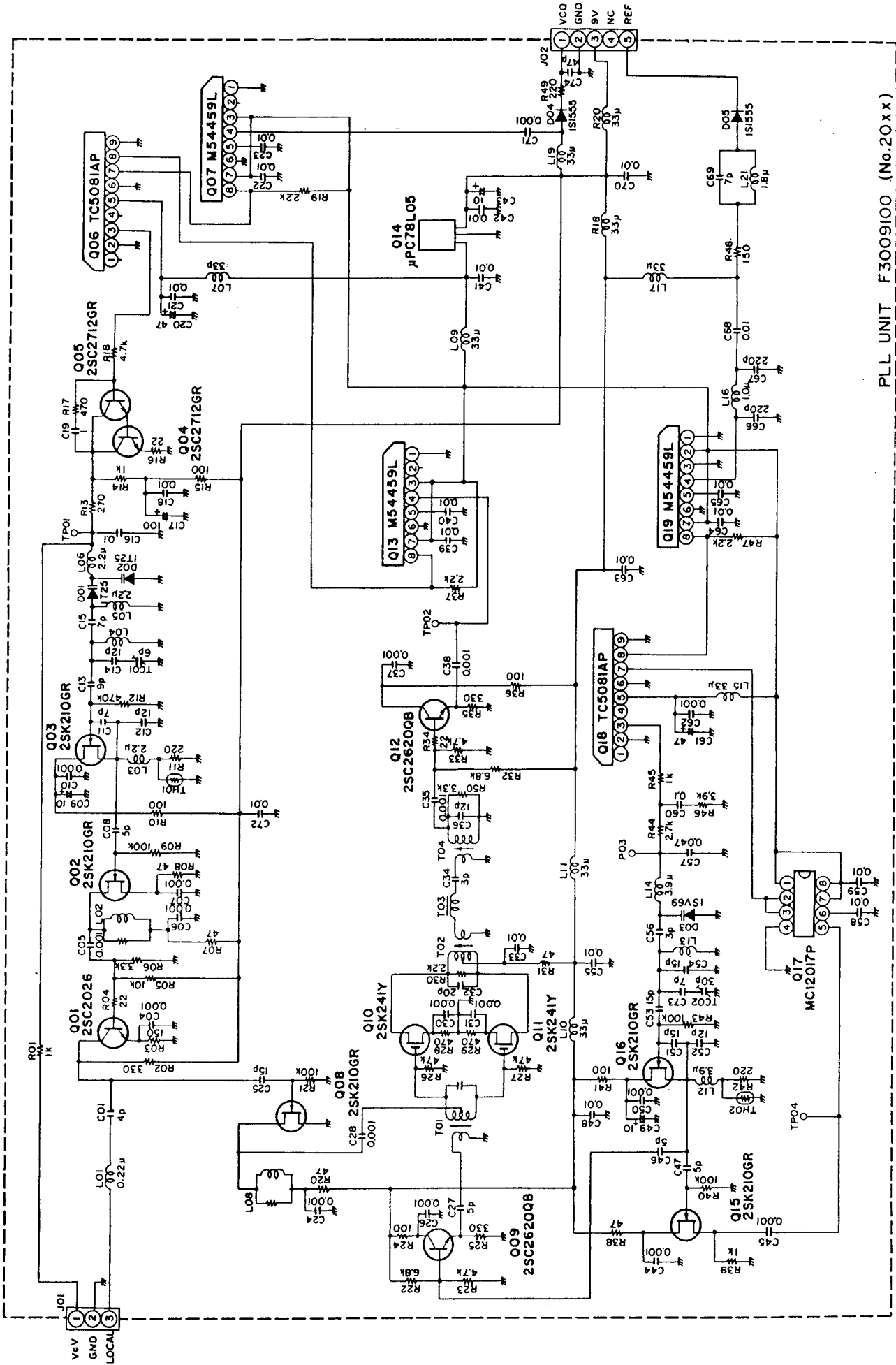


(Reverse view of "chip" side)

FEX-767-2 PLL UNIT VOLTAGE CHART (DC VOLT)

	E (S)	C (D)	B (G)	REMARKS
Q2001	5.05	1.11	1.84	
Q2002	0.25	8.52	0	
Q2003	0.82	8.29	0	
Q2004	0	5.03	0.10	
Q2005	0.21	5.03	0.10	
Q2008	0	8.30	-0.30	
Q2009	2.47	7.96	3.24	
Q2010	0.99	8.54	0	
Q2011	1.00	8.50	0	
Q2012	2.48	8.02	3.26	
Q2015	2.12	8.63	0	
Q2016	0.89	8.16	0	

FEX-767-2 PLL UNIT CIRCUIT DIAGRAM



PLL UNIT F3009100 (No.20xx)

RESISTOR VALUES ARE IN Ω, 1/10W;
 CAPACITOR VALUES ARE IN µF, 50V;
 ELECTROLYTIC CAPACITOR VALUES ARE
 AND INDUCTOR VALUES ARE IN H;
 UNLESS OTHERWISE NOTED.

FEX-767-2 PLL UNIT ALIGNMENT

(1) Sub Loop VCV (Varactor Control Voltage)

Connect the high-impedance DC voltmeter to TP2003, and the frequency counter to TP2004. Adjust TC2002 for $2.0 \pm 0.1V$, and confirm $120 \text{ MHz} \pm 1 \text{ kHz}$ on the counter.

(2) Main Loop VCV

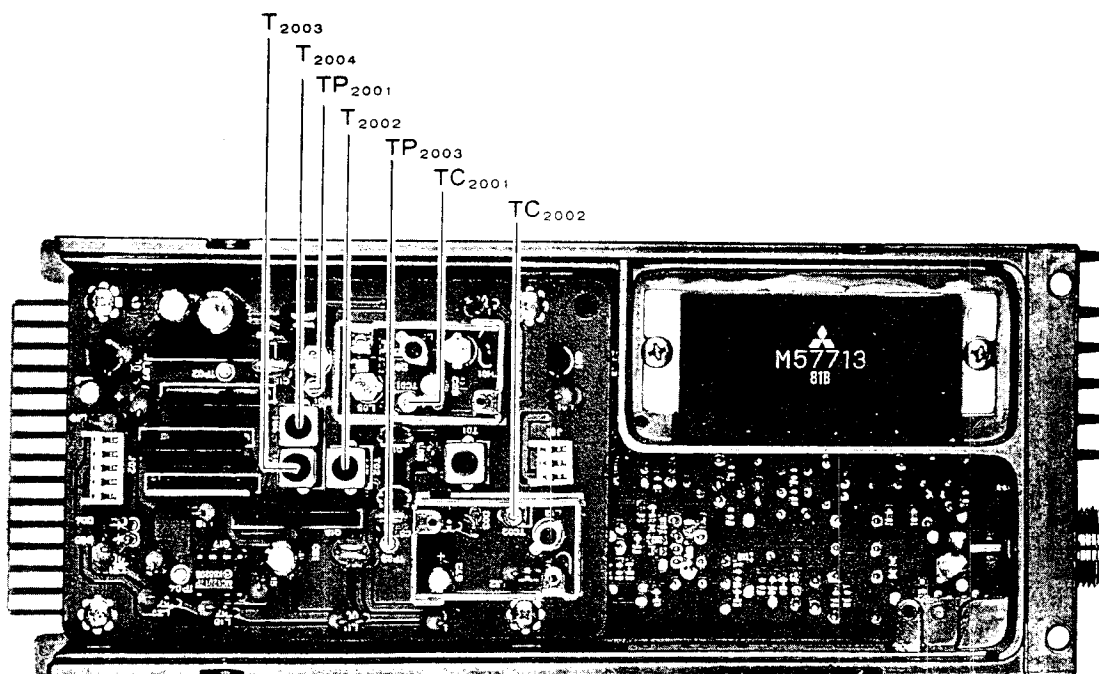
Tune to the high edge of the band and connect the high impedance DC voltmeter to TP2001. Adjust TC2001 for $8.2 \pm 0.1V$ on the meter. Retune to the low edge of the band and confirm 1 to 2V.

(3) PLL Output Level

Connect the RF millivoltmeter to TP2002. Tune to the center of the band and adjust T2001 for maximum RF. Then retune as indicated below, adjusting each transformer for maximum RF above the levels indicated.

<u>Frequency</u>	<u>Transformer</u>	<u>Min. Level</u>
Low Edge	T2003	100 mVrms
Band Center	T2002	100 mVrms
High Edge	T2004	80 mVrms

Repeat the adjustments at each frequency several times.



FEX-767-2 PLL UNIT ALIGNMENT POINTS

FEX-767-2 PLL UNIT PARTS LIST

Q 2001	G3320260	Transistor	2SC2026	R 2026	J24205473	RES. Chip	47k Ohm	1/10W
Q 2002	G3802107G	FET	2SK210GR TE85R	R 2027	J24205473	RES. Chip	47k Ohm	1/10W
Q 2003	G3802107G	FET	2SK210GR TE85R	R 2028	J24205471	RES. Chip	470 Ohm	1/10W
Q 2004	G3327127G	Transistor	2SC2712GR TE85R	R 2029	J24205471	RES. Chip	470 Ohm	1/10W
Q 2005	G3327127G	Transistor	2SC2712GR TE85R	R 2030	J24205222	RES. Chip	2.2k Ohm	1/10W
Q 2006	G1090473	IC	TC5081AP	R 2031	J24205470	RES. Chip	47 Ohm	1/10W
Q 2007	G1090838	IC	M54459L	R 2032	J24205682	RES. Chip	6.8k Ohm	1/10W
Q 2008	G3802107G	FET	2SK210GR TE85R	R 2033	J24205472	RES. Chip	4.7k Ohm	1/10W
Q 2009	G3326207B	FET	2SC2620 QBTR	R 2034	J24205220	RES. Chip	22 Ohm	1/10W
Q 2010	G3802410Y	FET	2SK241Y	R 2035	J24205331	RES. Chip	330 Ohm	1/10W
Q 2011	G3802410Y	FET	2SK241Y	R 2036	J24205101	RES. Chip	100 Ohm	1/10W
Q 2012	G3326207B	FET	2SC2620 QBTR	R 2037	J24205222	RES. Chip	2.2k Ohm	1/10W
Q 2013	G1090838	IC	M54459L	R 2038	J24205470	RES. Chip	47 Ohm	1/10W
Q 2014	G1090848	IC	uPC78L05J	R 2039	J24205102	RES. Chip	1k Ohm	1/10W
Q 2015	G3802107G	FET	2SK210GR TE85R	R 2040	J24205104	RES. Chip	100k Ohm	1/10W
Q 2016	G3802107G	FET	2SK210GR TE85R	R 2041	J24205101	RES. Chip	100 Ohm	1/10W
Q 2017	G1090725	IC	MC12017P	R 2042	J24205221	RES. Chip	2.2k Ohm	1/10W
Q 2018	G1090473	IC	TC5081AP	R 2043	J24205104	RES. Chip	100k Ohm	1/10W
Q 2019	G1090697	IC	M54455L	R 2044	J24205272	RES. Chip	2.7k Ohm	1/10W
D 2001	G2090107	Diode	1T25	R 2045	J24205102	RES. Chip	1k Ohm	1/10W
D 2002	G2090107	Diode	1T25	R 2046	J24205392	RES. Chip	3.9k Ohm	1/10W
D 2003	G2090109	Diode	1SV69	R 2047	J24205222	RES. Chip	2.2k Ohm	1/10W
D 2004	G2015550	Diode	1S1555	R 2048	J24205151	RES. Chip	150 Ohm	1/10W
D 2005	G2015550	Diode	1S1555	R 2049	J24205221	RES. Chip	220 Ohm	1/10W
TH 2001	G9090008	Thermistor	112102-2	R 2050	J24205332	RES. Chip	3.3k Ohm	1/10W
TH 2002	G9090008	Thermistor	112102-2	C 2001	K22170205	CAP. Chip	4pF	50V
R 2001	J24205102	RES. Chip	1k Ohm	C 2004	K22170805	CAP. Chip	0.001uF	50V
R 2002	J24205331	RES. Chip	330 Ohm	C 2005	K22170805	CAP. Chip	0.001uF	50V
R 2003	J24205151	RES. Chip	150 Ohm	C 2006	K22170805	CAP. Chip	0.001uF	50V
R 2004	J24205220	RES. Chip	22 Ohm	C 2007	K22170805	CAP. Chip	0.001uF	50V
R 2005	J24205103	RES. Chip	10k Ohm	C 2008	K22170206	CAP. Chip	5pF	50V
R 2006	J24205332	RES. Chip	3.3k Ohm	C 2009	K40129004	AL.Electro CAP.	10uF	16V
R 2007	J24205470	RES. Chip	47 Ohm	C 2010	K22170805	CAP. Chip	0.001uF	50V
R 2008	J24205470	RES. Chip	47 Ohm	C 2011	K22170208	CAP. Chip	7pF	50V
R 2009	J24205104	RES. Chip	100k Ohm	C 2012	K22170213	CAP. Chip	12pF	50V
R 2010	J24205101	RES. Chip	100 Ohm	C 2013	K22170210	CAP. Chip	9pF	50V
R 2011	J24205221	RES. Chip	220 Ohm	C 2014	K22170213	CAP. Chip	12pF	50V
R 2012	J24205474	RES. Chip	470k Ohm	C 2015	K22170208	CAP. Chip	7pF	50V
R 2013	J24205271	RES. Chip	270 Ohm	C 2016	K50170017	MYLAR CAP.	100uF	16V
R 2014	J24205102	RES. Chip	1k Ohm	C 2017	K40129007	AL.Electro CAP.	0.01uF	50V
R 2015	J24205101	RES. Chip	100 Ohm	C 2018	K22170817	CAP. Chip	1uF	50V
R 2016	J24205220	RES. Chip	22 Ohm	C 2019	K52170002	MYLAR CAP.	47uF	16V
R 2017	J24205471	RES. Chip	470 Ohm	C 2020	K40129002	AL.Electro CAP.	0.01uF	50V
R 2018	J24205472	RES. Chip	470 Ohm	C 2021	K22170817	CAP. Chip	0.01uF	50V
R 2019	J24205222	RES. Chip	2.2k Ohm	C 2022	K22170817	CAP. Chip	0.01uF	50V
R 2020	J24205470	RES. Chip	47 Ohm	C 2023	K22170817	CAP. Chip	0.01uF	50V
R 2021	J24205104	RES. Chip	100k Ohm	C 2024	K22170805	CAP. Chip	0.001uF	50V
R 2022	J24205682	RES. Chip	6.8k Ohm	C 2025	K22170215	CAP. Chip	15pF	50V
R 2023	J24205472	RES. Chip	4.7k Ohm	C 2026	K22170805	CAP. Chip	5pF	50V
R 2024	J24205101	RES. Chip	100 Ohm	C 2027	K22170206	CAP. Chip	8pF	50V
R 2025	J24205331	RES. Chip	330 Ohm	C 2028	K22170805	CAP. Chip	0.001uF	50V

FEX-767-2 PLL UNIT PARTS LIST

T 2003	L0020963	Coil	132MHz
T 2004	L0021646	Coil	
J 2001	P1090425	Connector	5124-03BHPB 5124-05BHPB
J 2002	P1090427	Connector	
	Q5000050	Terminal Posts	TP-K
	RO115290	Shield Case	Shield Case Lid
	RO115300	Shield Case Lid	

C 2040	K22170817	CAP. Chip	50V	0.01uF	B
C 2041	K22170817	CAP. Chip	50V	0.01uF	B
C 2042	K22170817	CAP. Chip	50V	0.01uF	B
C 2043	K40129004	AL. Electro CAP.	16V	10uF	B
C 2044	K22170805	CAP. Chip	50V	0.001uF	B
C 2045	K22170805	CAP. Chip	50V	0.001uF	B
C 2046	K22170206	CAP. Chip	50V	5pF	CH
C 2047	K22170206	CAP. Chip	50V	5pF	CH
C 2048	K22170817	CAP. Chip	50V	0.01uF	B
C 2049	K40129004	AL. Electro CAP.	16V	10uF	B
C 2050	K22170805	CAP. Chip	50V	0.001uF	B
C 2051	K22170215	CAP. Chip	50V	15pF	CH
C 2052	K22170213	CAP. Chip	50V	12pF	CH
C 2053	K22170215	CAP. Chip	50V	12pF	CH
C 2054	K22170213	CAP. Chip	50V	12pF	CH
C 2055	K22170817	CAP. Chip	50V	0.01uF	B
C 2056	K22170204	CAP. Chip	50V	3pF	CH
C 2057	K50170017	Mylar CAP.	50V	0.01uF	B
C 2058	K22170817	CAP. Chip	50V	0.01uF	B
C 2059	K22170817	CAP. Chip	50V	0.01uF	B
C 2060	K50170019	Mylar CAP.	50V	0.1uF	B
C 2061	K40129002	AL. Electro CAP.	16V	47uF	B
C 2062	K22170805	CAP. Chip	50V	0.001uF	B
C 2063	K22170817	CAP. Chip	50V	0.01uF	B
C 2064	K22170817	CAP. Chip	50V	0.01uF	B
C 2065	K22170817	CAP. Chip	50V	0.01uF	B
C 2066	K22170243	CAP. Chip	50V	220pF	CH
C 2067	K22170243	CAP. Chip	50V	220pF	CH
C 2068	K22170817	CAP. Chip	50V	0.01uF	B
C 2069	K22170208	CAP. Chip	50V	7pF	CH
C 2070	K22170817	CAP. Chip	50V	0.01uF	B
C 2071	K22170805	CAP. Chip	50V	0.001uF	B
C 2072	K22170817	CAP. Chip	50V	0.01uF	B
TC 2001	K91000147	Trimmer CAP.	6pF		
TC 2002	K91000147	Trimmer CAP.	6pF		
L 2001	L1190312	M. RFC	0.22uH		
L 2002	L1020680	RFC			
L 2003	L1190236	M. RFC	2.2uH		
L 2004	L0021634	Coil			
L 2005	L1190236	M. RFC	2.2uH		
L 2006	L1190236	M. RFC	2.2uH		
L 2007	L1190329	M. RFC	33uH		
L 2008	L1020680	RFC			
L 2009	L1190329	M. RFC	33uH		
L 2010	L1190329	M. RFC	33uH		
L 2011	L1190329	M. RFC	33uH		
L 2012	L1190322	M. RFC	3.9uH		
L 2013	L0021634	Coil			
L 2014	L1190322	M. RFC	3.9uH		
L 2015	L1190329	M. RFC	33uH		
L 2016	L1190089	M. RFC	1.0uH		
L 2017	L1190329	M. RFC	33uH		
L 2018	L1190329	M. RFC	33uH		
L 2019	L1190329	M. RFC	33uH		
L 2020	L1190329	M. RFC	33uH		
L 2021	L1190131	M. RFC	1.8uH		
T 2001	L0020907	Coil	145MHz		
T 2002	L0021646	Coil	132MHz		

NOTE