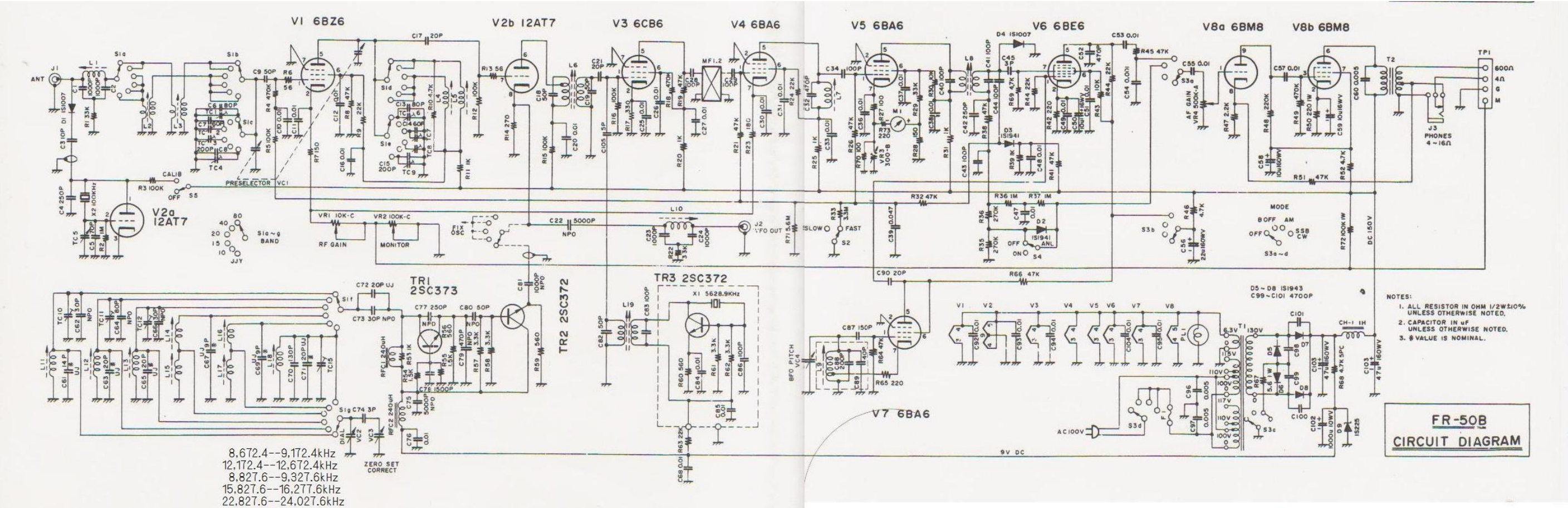


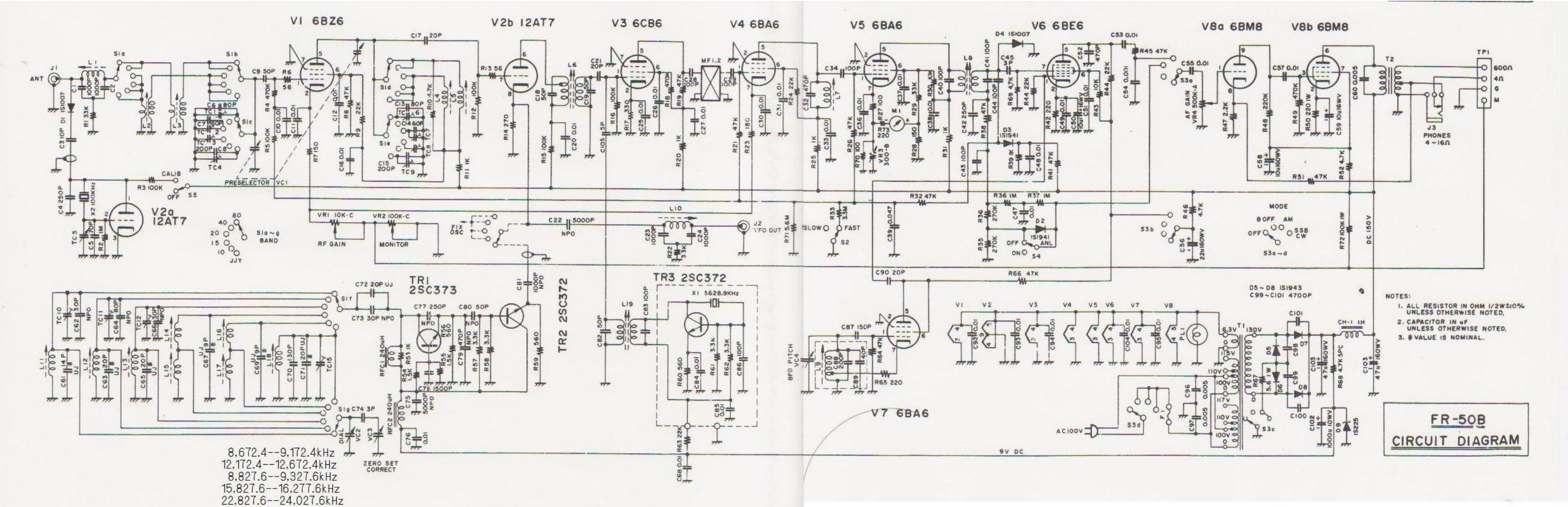
CIRCUIT DIAGRAMS

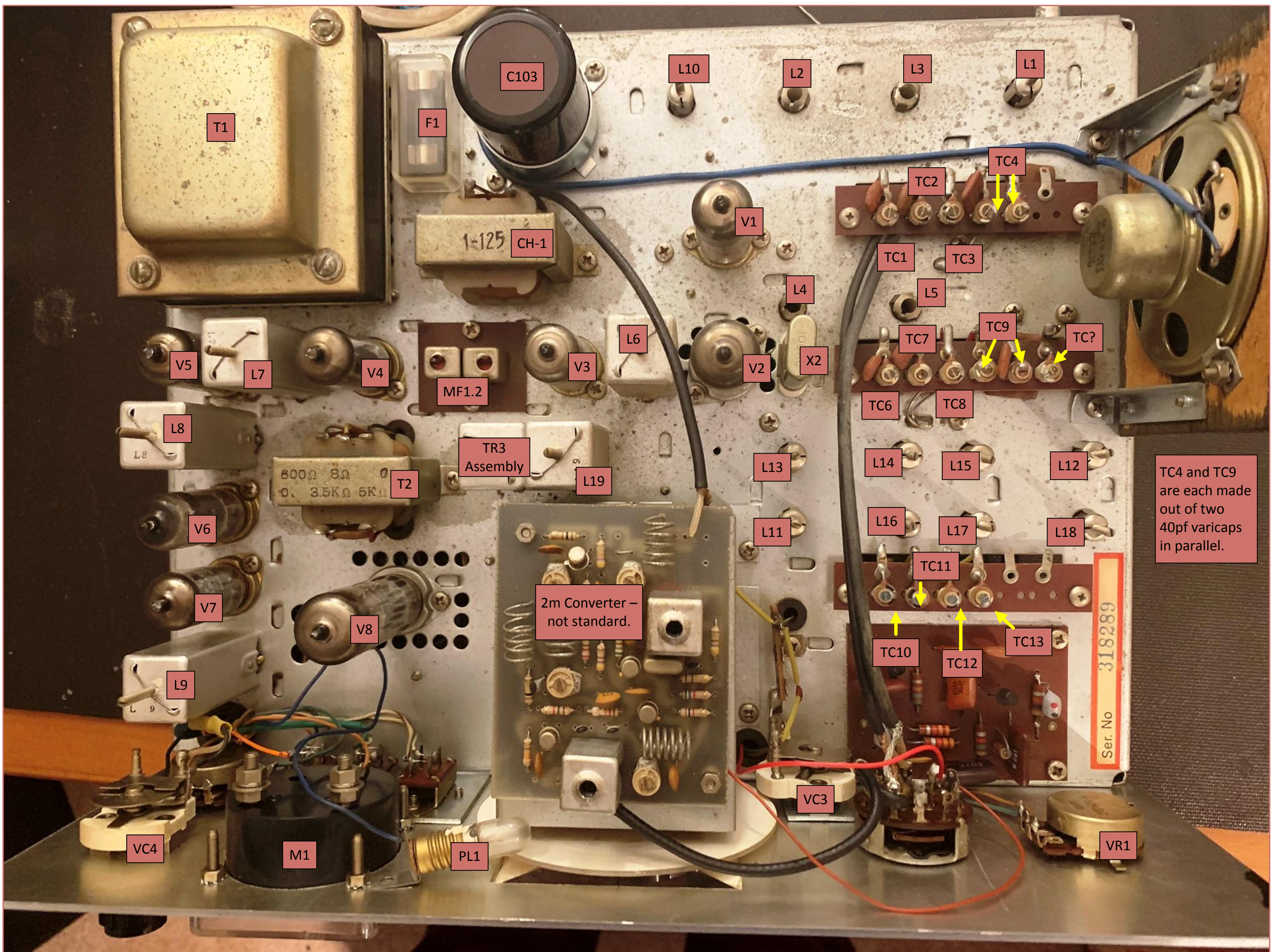
YAESU FR-50B

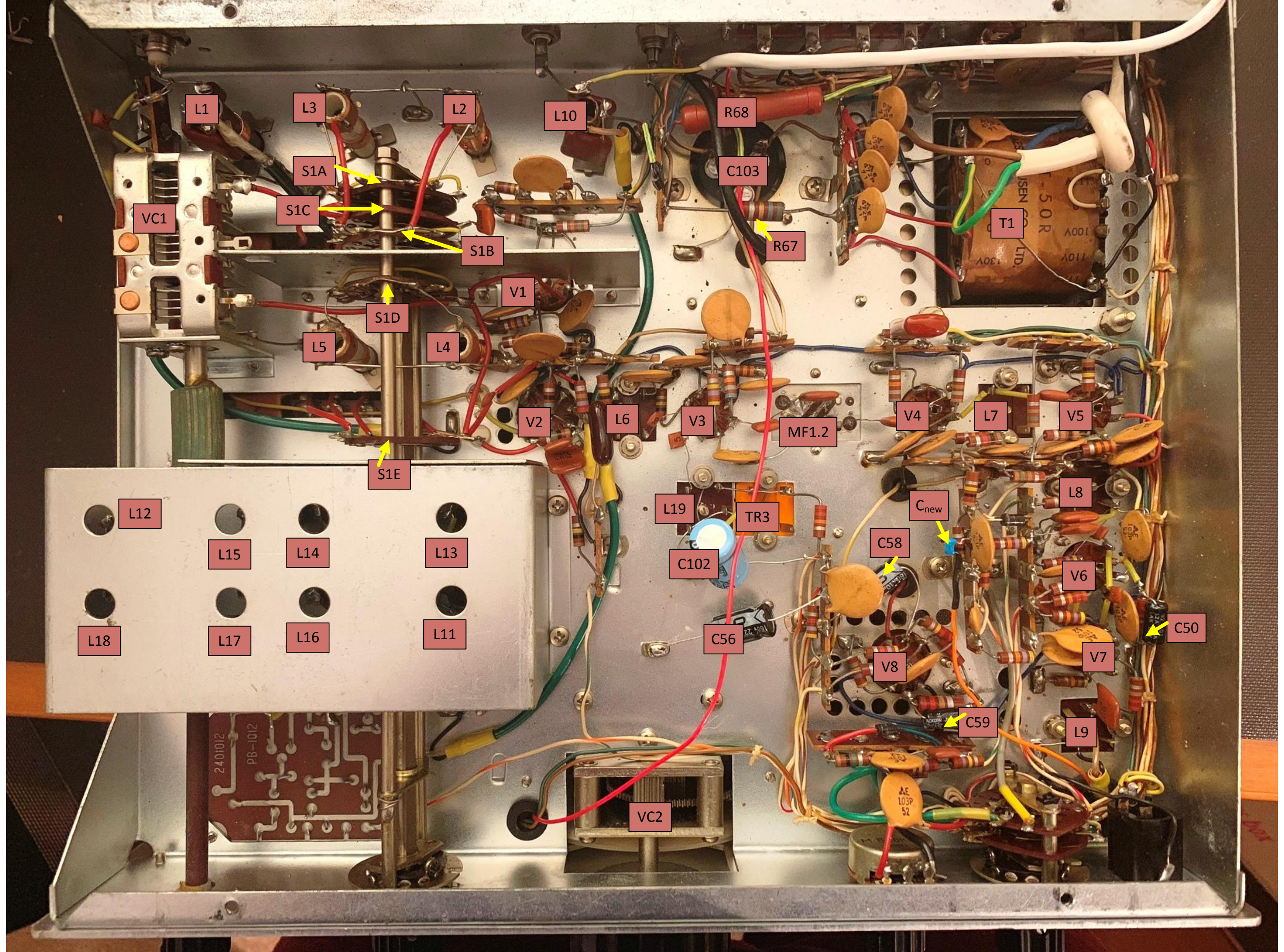


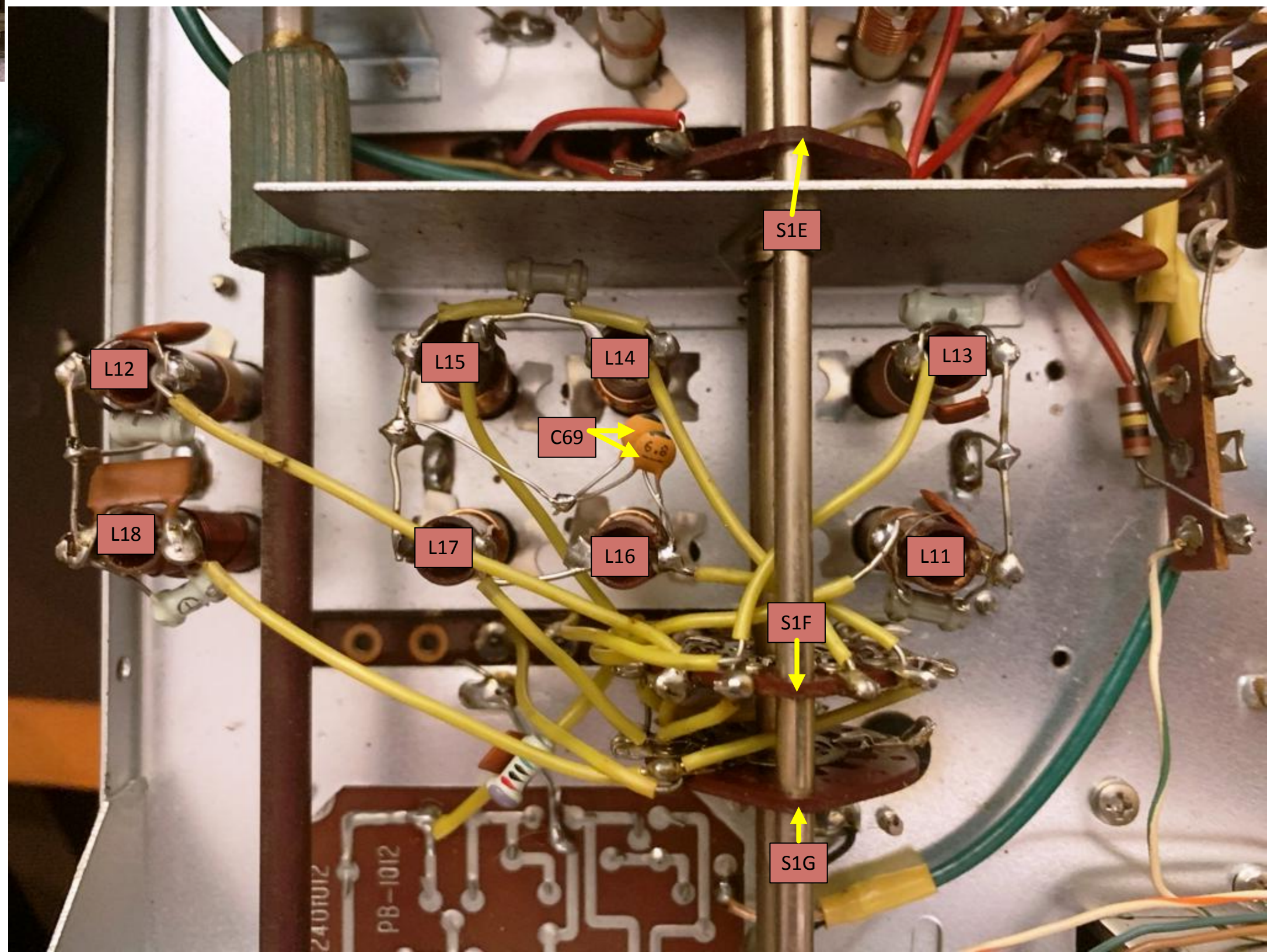
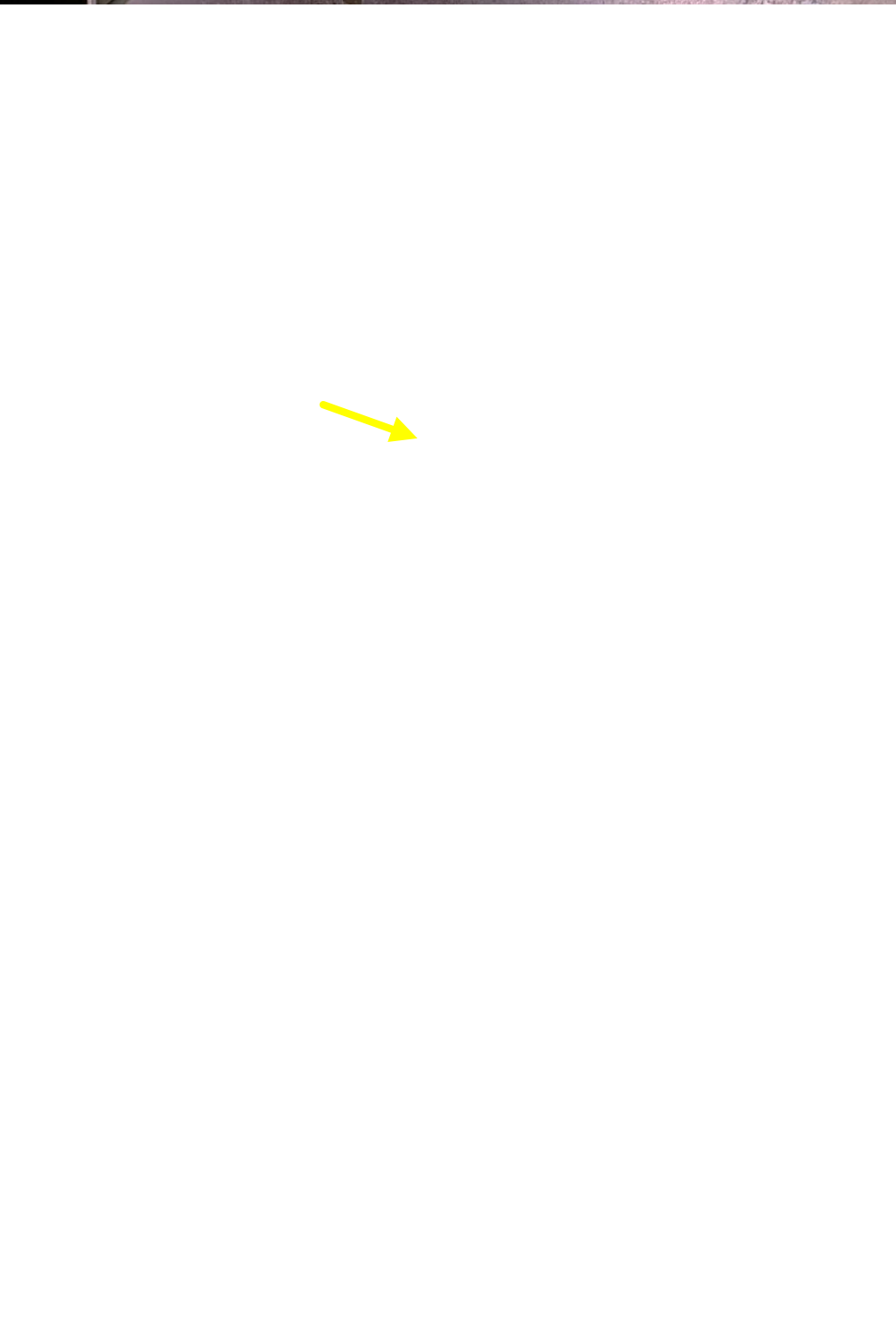
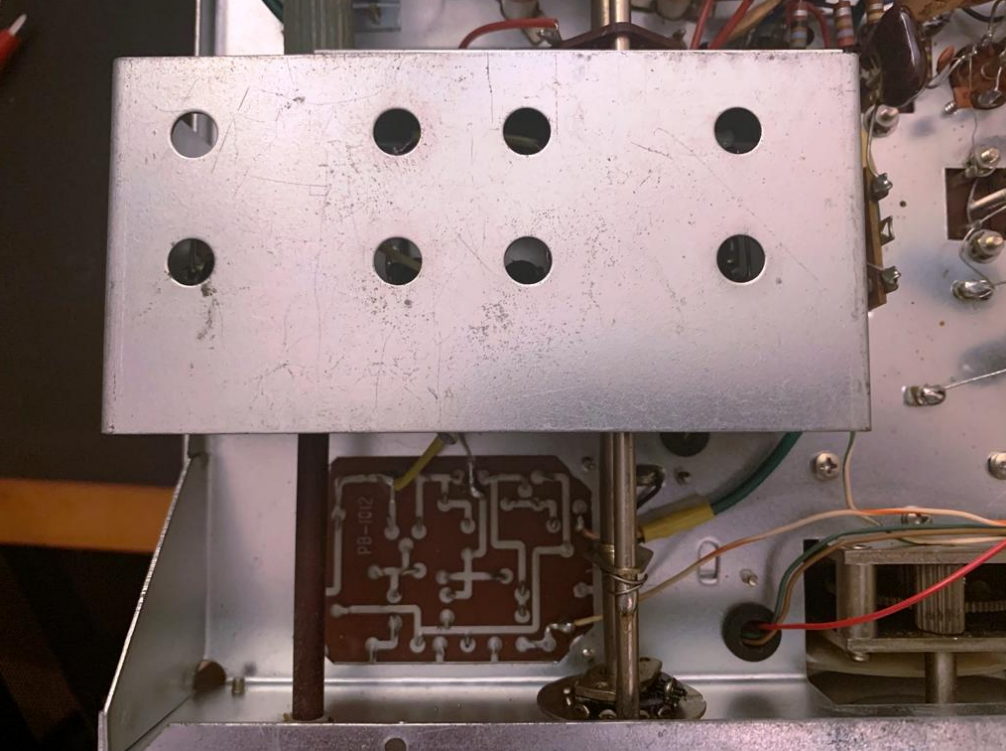


This page is set to print landscape on a piece of paper 54cm wide by 25cm high









Practical Wireless Magazine

Rejuvenating the Yaesu FR-50B Receiver

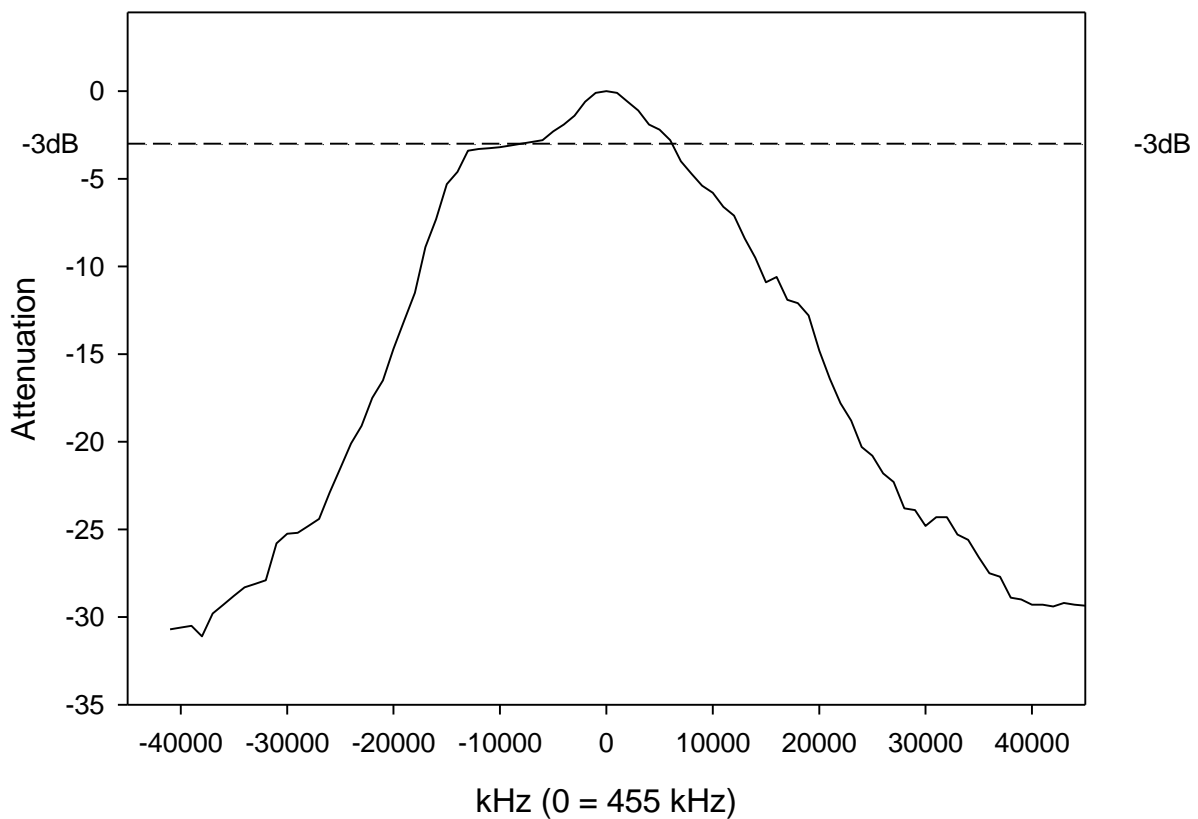
Dr. Samuel Ritchie EI9FZB

I published a three part article dealing with rejuvenating a Yaesu FR-50B receiver in the November 2017, December 2017 and January 2018 editions of PW Magazine.

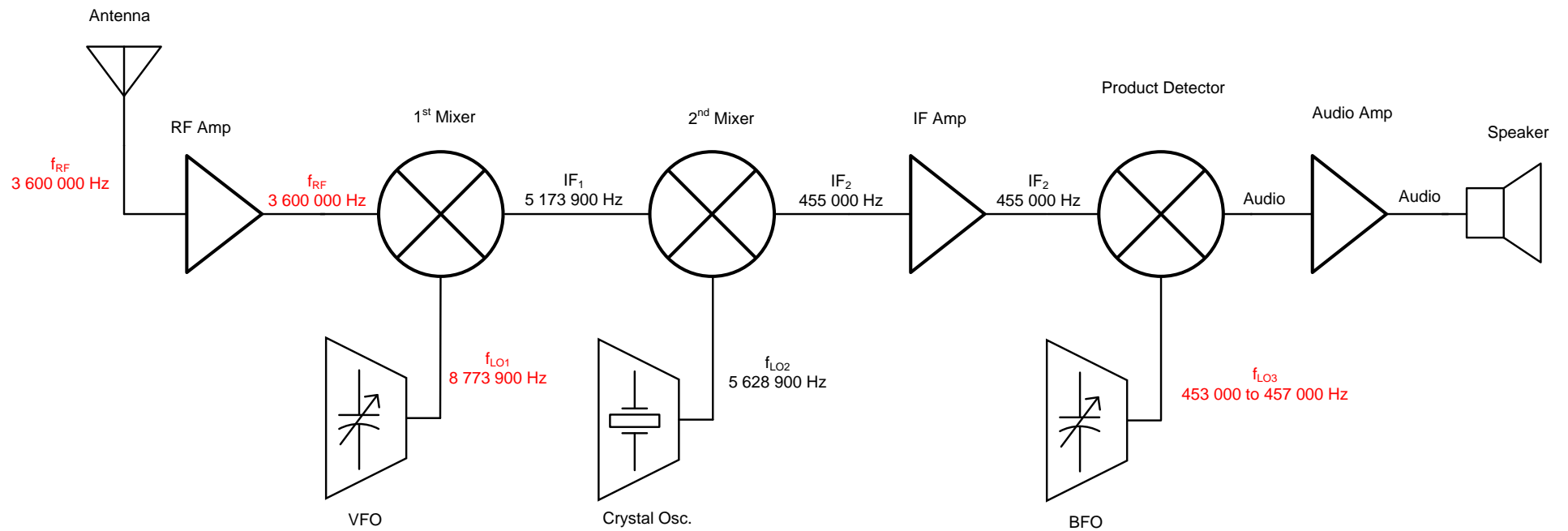
Some of the circuit diagrams and other graphics were a little small for some people to read.

This document is a compilation of all these images to help you get these old receivers running again.

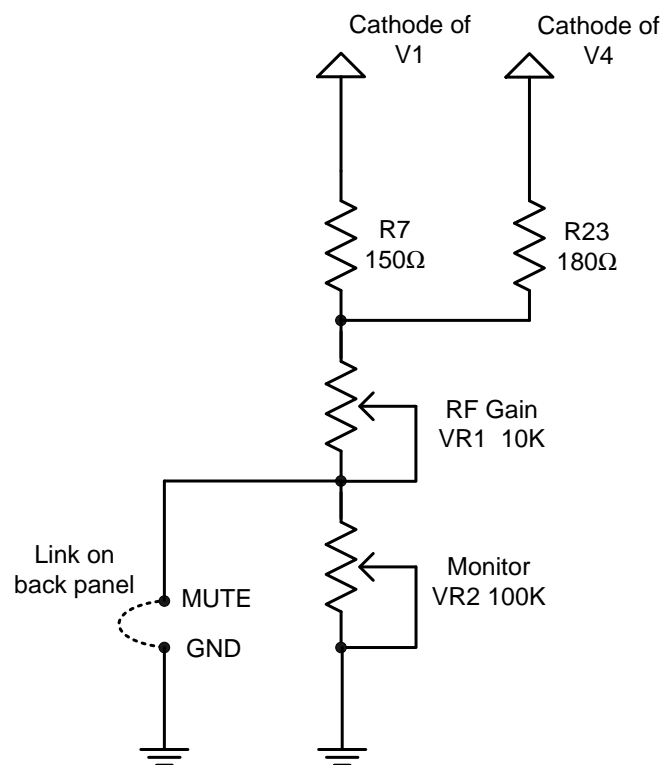
455 kHz IF Filter Shape



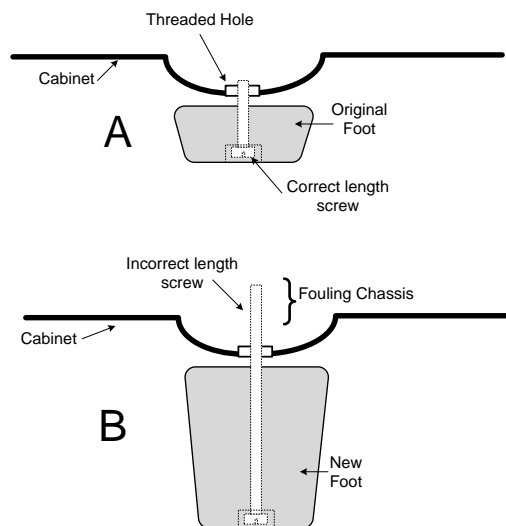
455 kHz IF filter shape



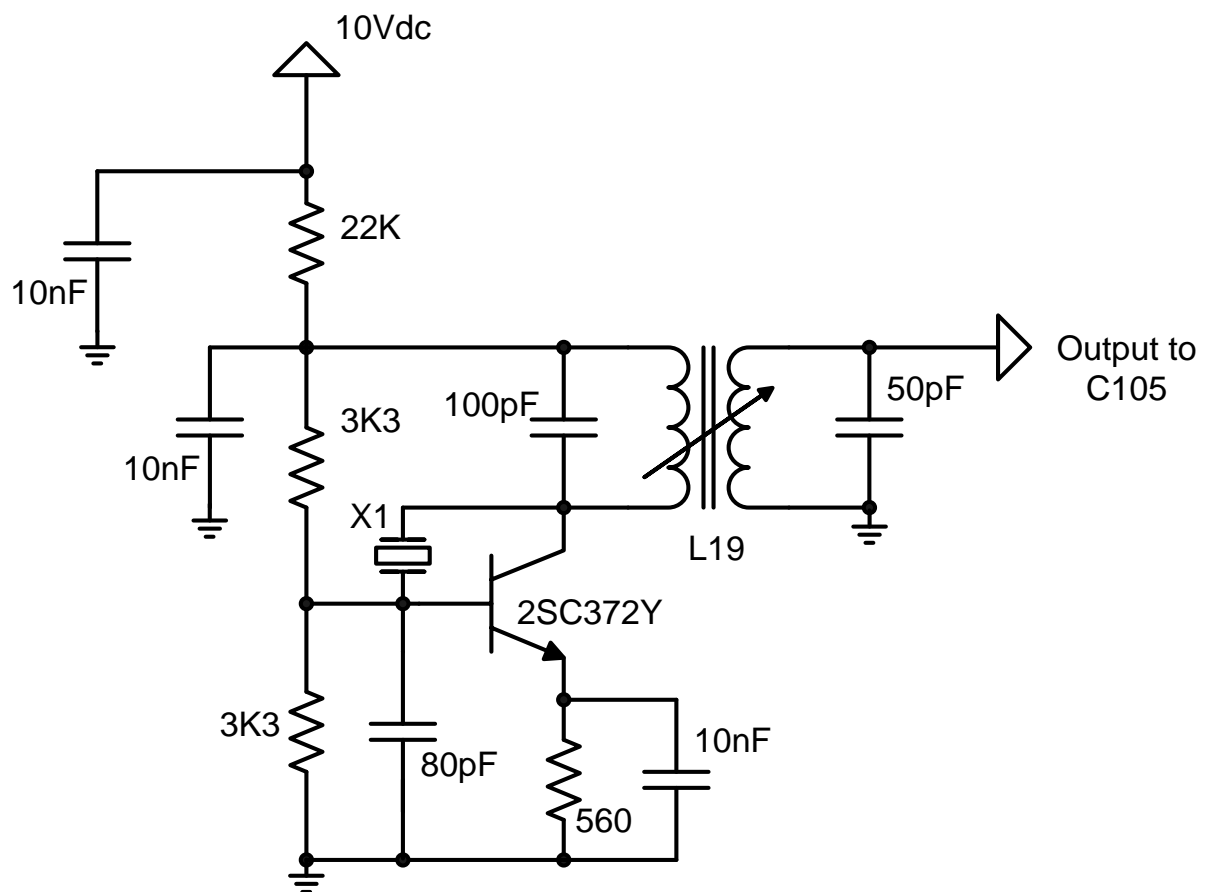
Basic block diagram of the FR-50B



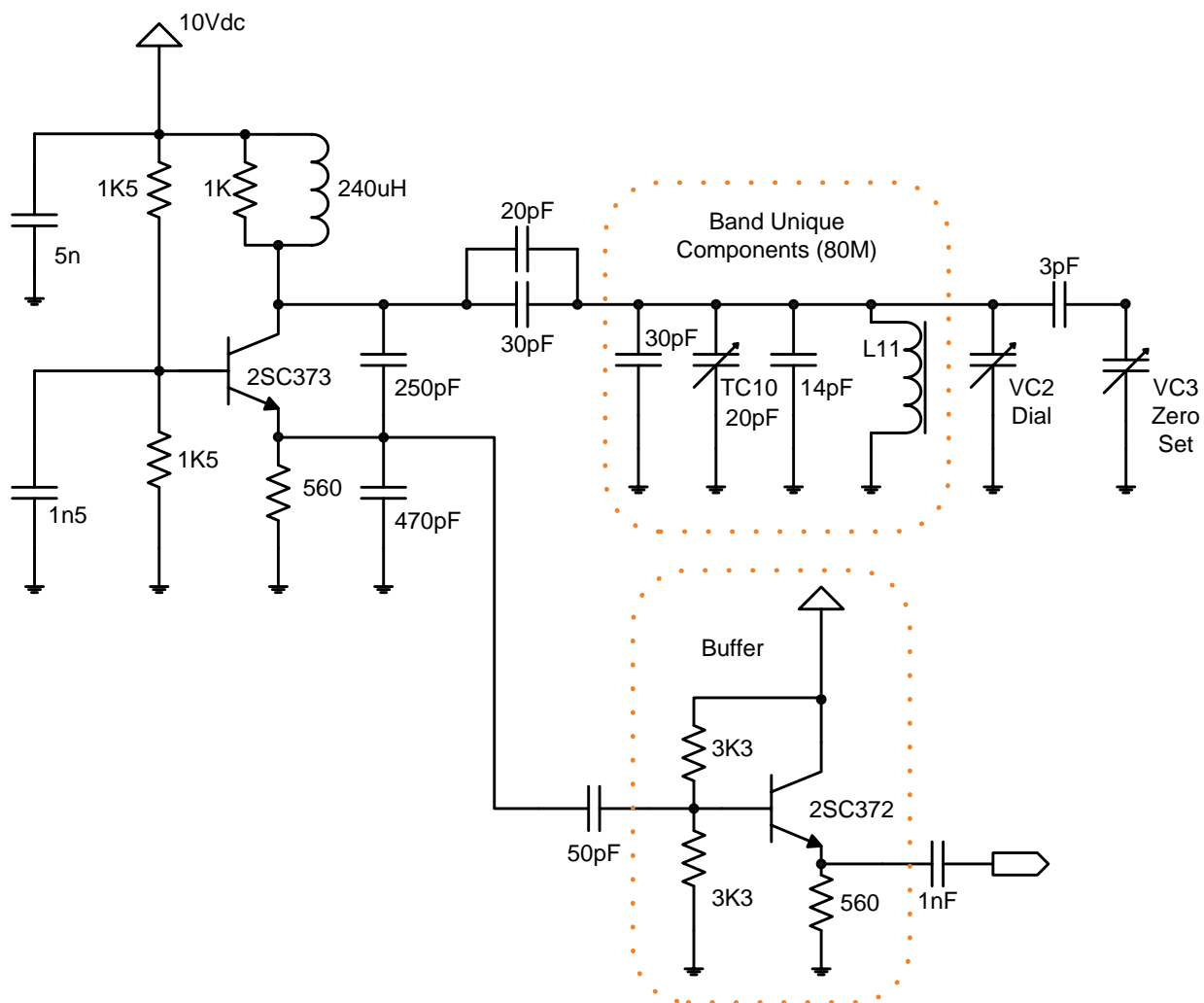
RF gain and Monitor circuit.



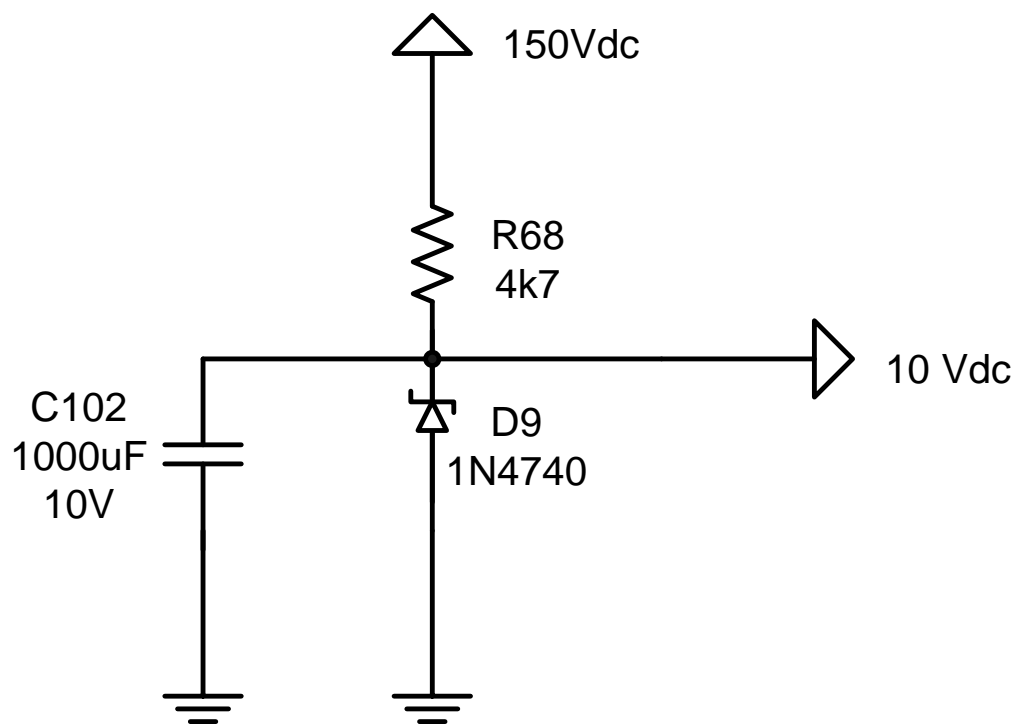
Correct and incorrect screw length.



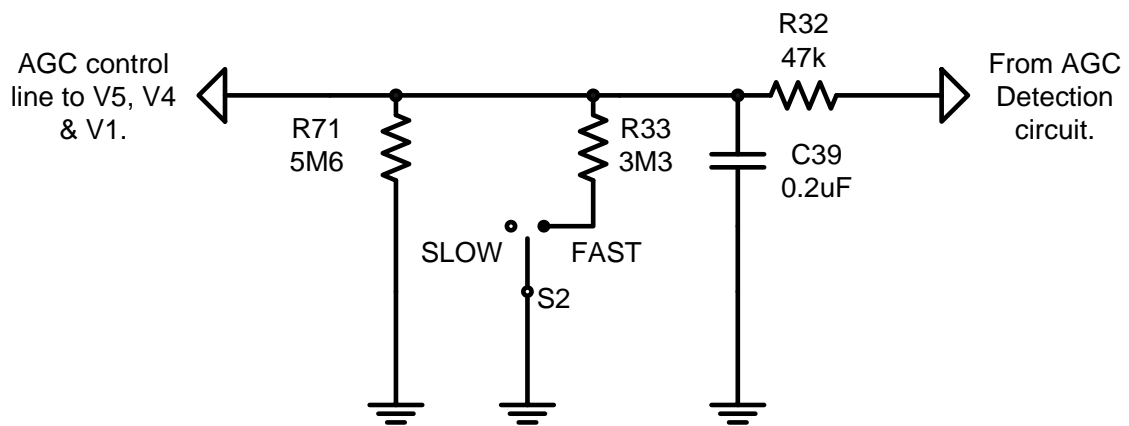
Redrawn crystal oscillator schematic.



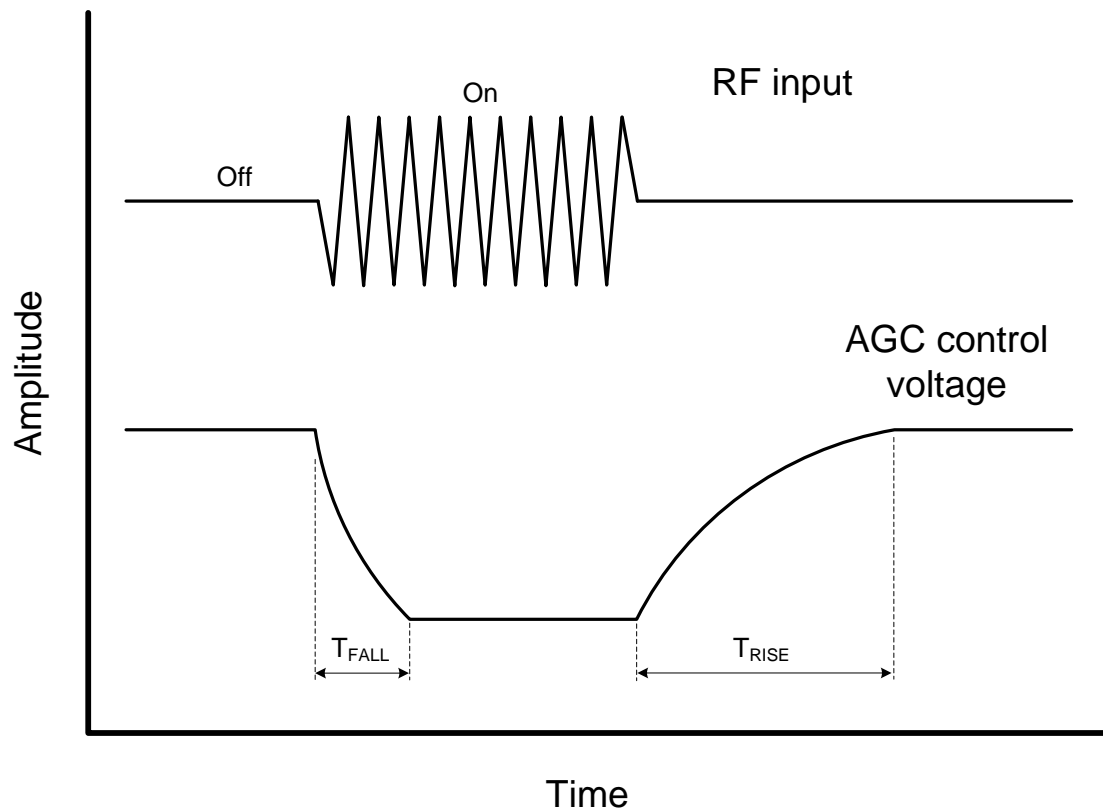
VFO schematic



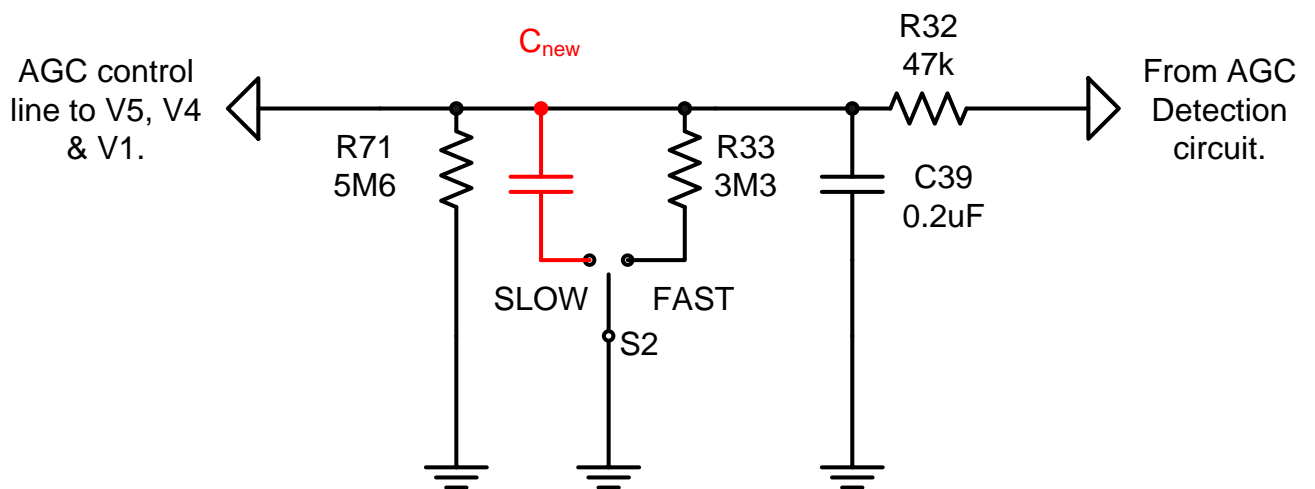
Schematic of low voltage generation



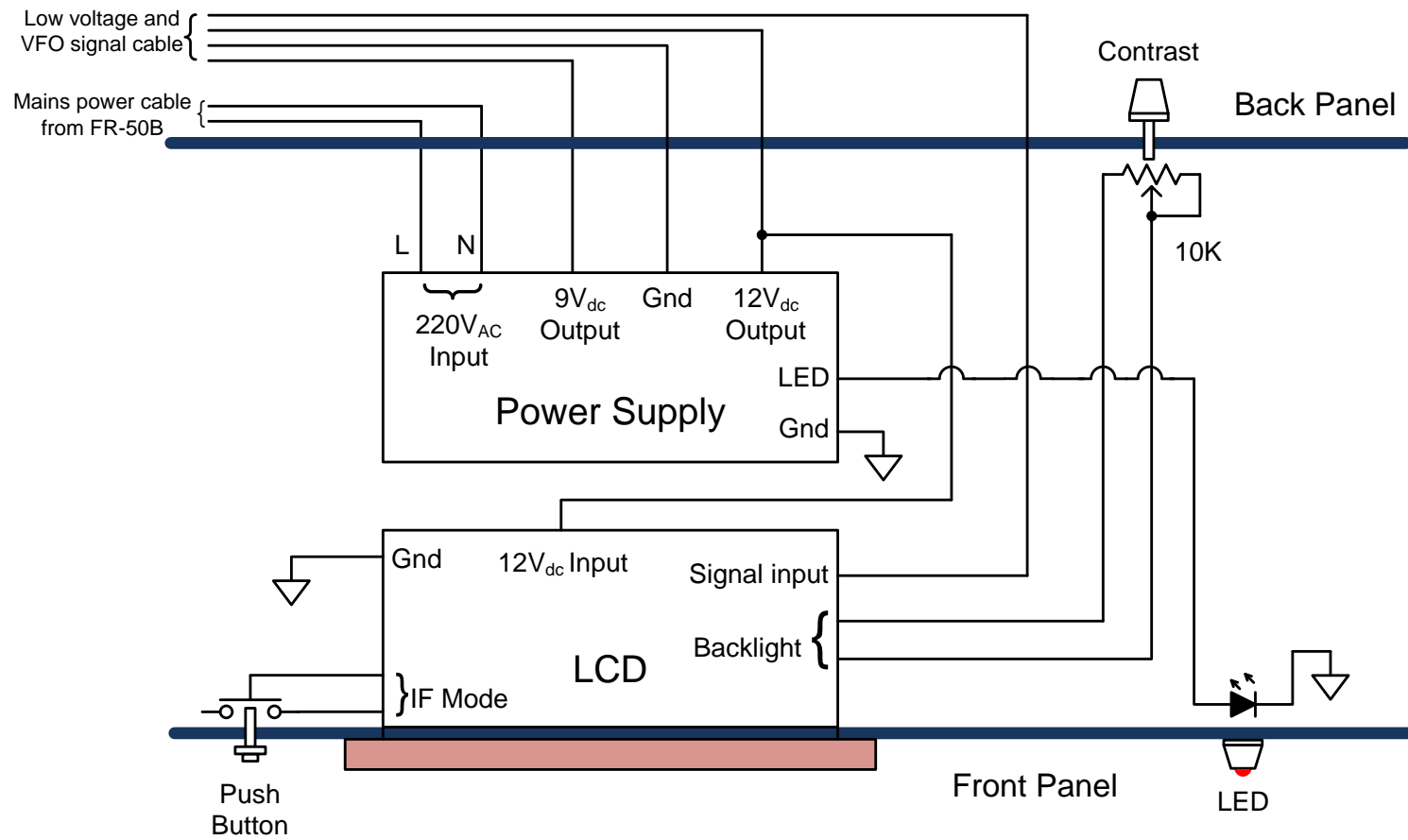
AGC circuit schematic – original.



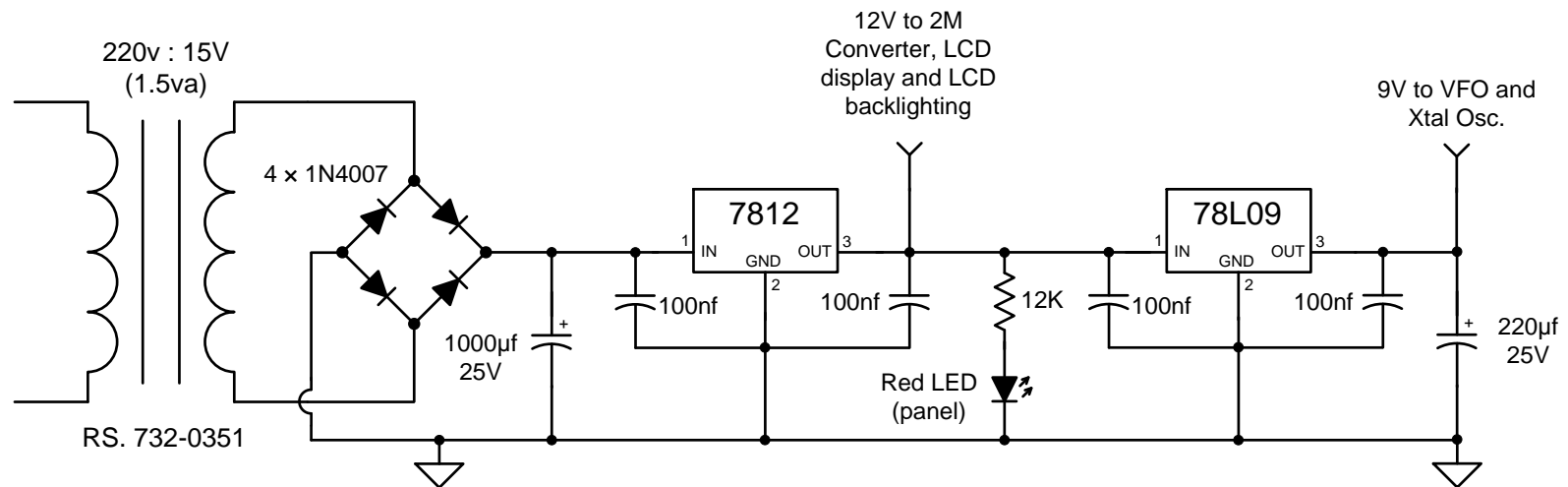
Receiver AGC characteristic



Modified AGC circuit schematic



Block diagram of enclosure contents.



PSU schematic